



Draw an Arctic Penguin!



PreK – 1st Grade Instruction Guide

• Watch the video at
www.parachutearts.com
and on Parachute Studio's
Youtube channel

VOCAB

Seasons: The four different times during the year with different types of weather - spring, summer, autumn, and winter

Climate: The average measurements of temperature, wind, humidity, snow, and rain in a place over the course of years. Climate is like the weather but over a long time

Northern lights: When the particles in the atmosphere react together to create beautiful light displays near the earth's poles

Warm colors: Colors that evoke the feeling of warmth. Red, yellow and orange are warm colors

Cool Colors: Colors that are calm or soothing in nature. Green, blue and violet are cool colors.

Silhouette: The dark shape and outline of someone or something visible against a lighter background

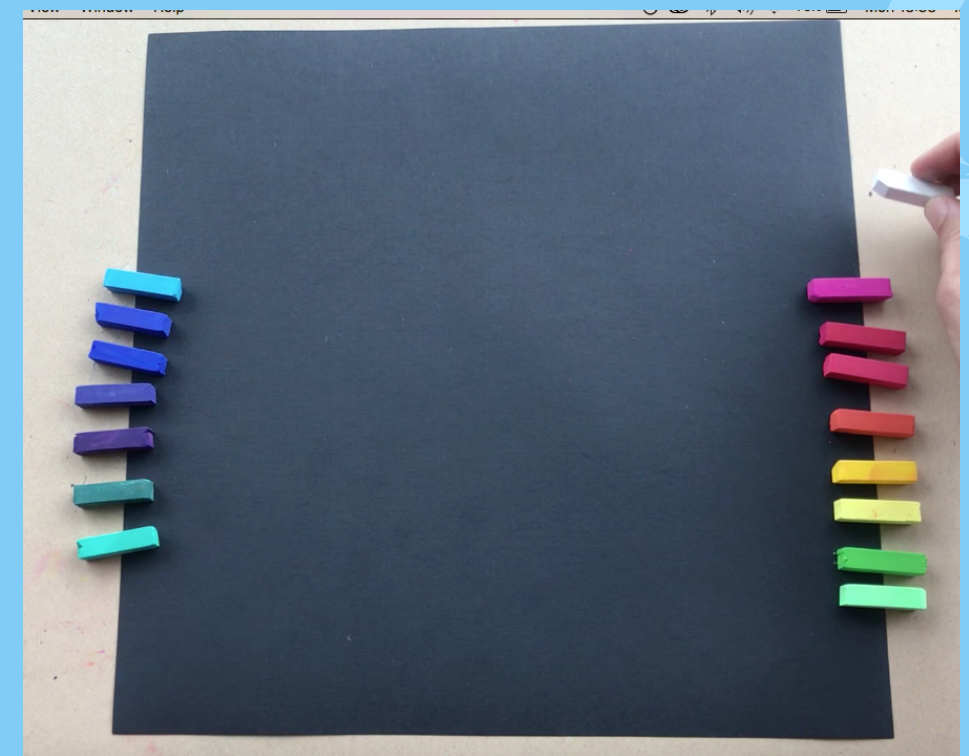
WHAT YOU'LL NEED:

- **Black crayon**
- **Black paper**
(Optional substitute: White paper)
- **Colored Chalk**
(Optional substitute: Crayons)



DIRECTIONS: DRAW YOUR BACKGROUND

1. Separate your warm and cool colored chalk. Move your cool colors (blues, purples, and bluish-greens) to the left side of your paper, and move your warm colors (reds, oranges and yellows) to the right side of your paper.



2. Draw your snowy mountains. With your white piece of chalk, draw a jagged line across your page for your mountain. Draw another jagged line for a mountain behind it. Fill them in by using the side of your chalk to rub onto the paper. Use your finger to smudge it in.



DRAW YOUR NORTHERN LIGHTS

3. Draw curvy lines in the sky. With your cool colored chalk, draw thick curvy lines on the left side of the paper above the mountains. Then draw curvy lines with your warm colored chalk on the right side of your sky.



4. Make your lights glow. Slide your finger across the curvy lines to create a glowing effect. Chalk can be messy, so wipe your fingers and switch them regularly.

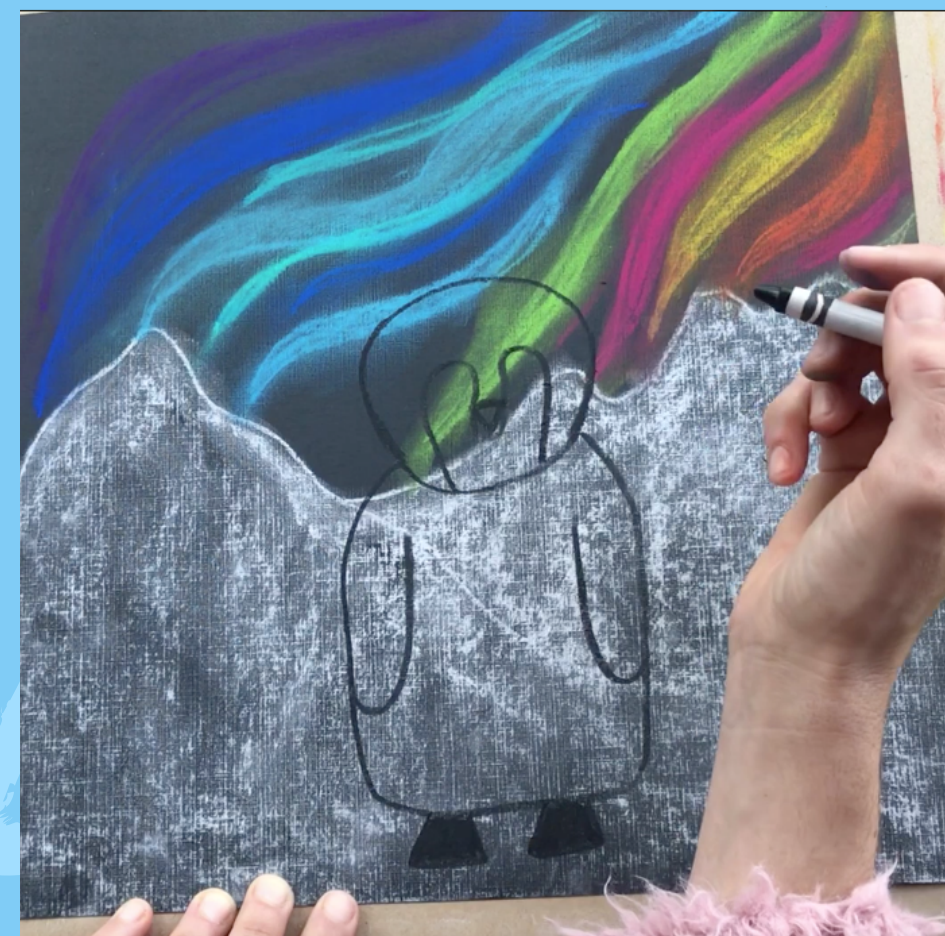


DRAW YOUR BABY EMPORER PENGUIN

5. Outline the head and body. Using your black crayon, draw a large, round oval for the penguin's head. Then draw a rectangle with rounded edges below the head to outline the body. Fill in two black boxes below the body for the feet.



6. . Outline the wings and face. Draw a "J" shape on the left side of the body for the wing, and a reverse "J" shape on the right side. Draw a big, curvy "M" shape on the head for the face. Draw an upside-down triangle in the middle of the "M" for the nose.



7. Draw the face. Color in oval outside the "M" shape with black crayon. Do not color in your upside-down triangle. Draw two circles inside the "M" for the eyes, leaving a little white circle for the white of the eyes.



8. Color the white areas of the penguin. Use your white chalk to color inside the penguin's face, nose, and eyes. Then color the body.



9. Add dark details. Use your black crayon to go over any lines the white chalk may have covered up. If you have black chalk or charcoal, rub your finger across it, and use your finger to add shadows around the wings, neck and body.



ADD DETAILS

10. Draw the moon, stars, and silhouettes. With your white chalk, draw a "C" shape that comes to a point with another "C" shape next to it for the moon. Make small dots in the sky for the stars. Use your black crayon to draw silhouettes of trees and distant animals in the snow.



11. Make it festive. If you'd like to make your penguin festive for the holidays, draw a scarf around its neck and an elf hat on its head.



We can't wait to see your penguins!

Make sure to send photos to your teachers, tag
@parachutearts on Instagram or email
heyparachute@gmail.com
with your finished masterpiece!

