

## **BASIC AUCTION PROCEDURES**

WCPA is an extension of the farm in that it does not own, wash, pack, store, cool, transport, or alter the produce. It is simply a display area where farmers and buyers meet.

Terms of the sale is cash – No debit or credit cards accepted.

WCPA reserves the right for any buyer that desires to pay by personal or company check may be required to have on file with WCPA a letter of credit from their bank.

Bob Crump Auctions will serve as the agent to collect any-and-all accounts receivable and/or insufficient checks.

Buyers must register prior to each sale showing legal identification.

Buyers need to provide a copy of their sales tax letter to the cashier when registering or pay sales tax as applicable.

No smoking or pets allowed in the auction barn.

Any announcements made day of sale shall take precedence over printed material.

Not responsible for any accidents should any occur.

All purchases must be paid in full the day of sale before items can be removed from premises.

Order buyer service offered for approved customers.



**Webster County Produce Auction**  
1304 Berry Road  
Seymour, MO 65746

# *Webster County Produce Auction*



*801 Berry Road  
Seymour, MO 65746*



**Established 2015**

Mailing Address:

**Webster County Produce Auction  
1304 Berry Road  
Seymour, Mo 65746**



Household, Estates, Farm, Produce, Real Estate, Benefits, Liquidations

PO Box 575  
Seymour, MO 65746

Home: (417) 935-4039  
Cell: (417) 464-4040

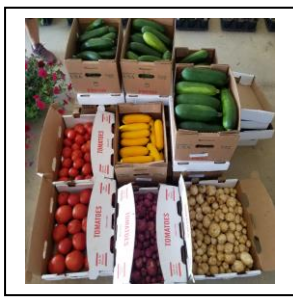


becrump@centurytel.net  
www.bobcrumpauctions.org

# Webster County Produce Auction (WCPA)

WCPA offers a wide variety of spring, summer, and fall locally grown crops by local farmers.

All products are carefully graded, sized, and packed in evenly sized containers.



**Mother's Day Auction**  
**Saturday, April 30, 2022**  
**10:00 a.m.**

*This auction will have all small lots where you may purchase a single item or more. No big lots. Special flowers, planters, etc. just for Mom.*

## 2022 Auction Calendar

Auction Dates Are In **Red**  
All Auctions Begin at 10:00 A.M.

Auction dates may change due to growing conditions or other unforeseen circumstances

*There are large lots for wholesale buyers for their roadside stands, stores, farmers markets, etc.*

*There are small lots for those that need fresh produce for home canning or freezing.*

*A partial listing of what will be offered when in season to the highest bidder selling by Box, Pallet, or Bin Lots.*

- Hanging Baskets
- Patio Planters
- Bedding Plants
- Vegetable Plants
- Bell & Hot Peppers
- Summer & Winter Squash
- Cantaloupe
- Gourds
- Pumpkins
- Ornamental Gourds
- Fall Decorations
- Mums

- Tomatoes
- Cucumbers
- Beets
- Onions
- Cauliflower
- Eggplant
- Okra
- Blackberries
- Green Beans
- Zucchini
- Potatoes
- Watermelon



**DIRECTIONS:** From Seymour, Mo take US 60 westbound 3/10 mile west of city limits to Berry Road (at Shrable Fertilizer), turn north and go 1 mile to auction barn.

**From Springfield, Mo** take US 60 east to Short Rd/Killdeer Rd median crossover (at west Seymour city limit sign) turn north, then back westbound on US 60 3/10 mile to Berry Rd, then north on Berry Road 1 mile to auction barn.

### April

S	M	T	W	Th	F	S
					1	2
3	4	5	6	7	8	9
10	11	12	13	14	15	16
17	18	19	20	21	22	23
24	25	26	27	28	29	30



### May

S	M	T	W	Th	F	S
1	2	3	4	5	6	7
8	9	10	11	12	13	14
15	16	17	18	19	20	21
22	23	24	25	26	27	28
29	30	31				

### June

S	M	T	W	Th	F	S
			1	2	3	4
5	6	7	8	9	10	11
12	13	14	15	16	17	18
19	20	21	22	23	24	25
26	27	28	29	30		

### July

S	M	T	W	Th	F	S
					1	2
3	4	5	6	7	8	9
10	11	12	13	14	15	16
17	18	19	20	21	22	23
24	25	26	27	28	29	30
31						

### August

S	M	T	W	Th	F	S
	1	2	3	4	5	6
7	8	9	10	11	12	13
14	15	16	17	18	19	20
21	22	23	24	25	26	27
28	29	30	31			

### September

S	M	T	W	Th	F	S
				1	2	3
4	5	6	7	8	9	10
11	12	13	14	15	16	17
18	19	20	21	22	23	24
25	26	27	28	29	30	

### October

S	M	T	W	Th	F	S
						1
2	3	4	5	6	7	8
9	10	11	12	13	14	15
16	17	18	19	20	21	22
23	24	25	26	27	28	29
30	31					