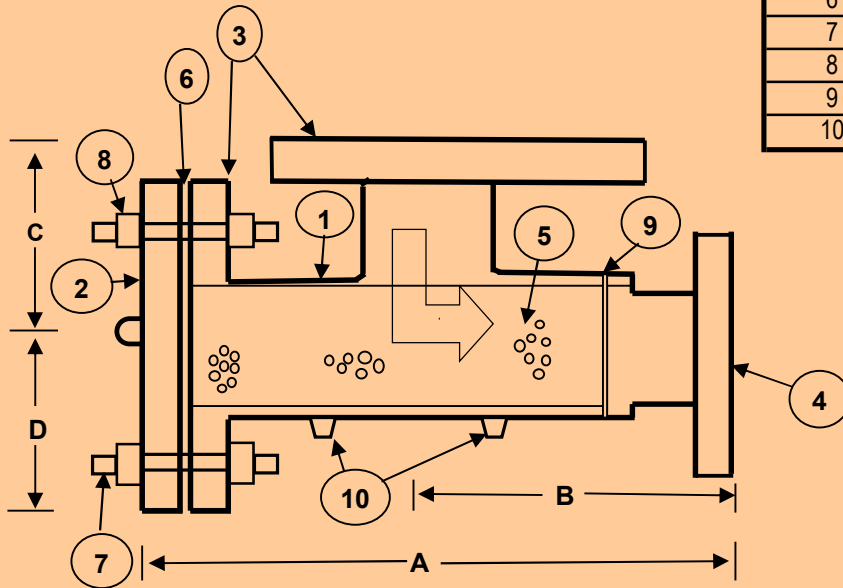


ITEM	QTY	DESCRIPTION	MATERIALS
1	1	BODY-STD WT.	A-106
2	1	COVER	A105
3	2	150# SLIP ON FLANGE*	A105
4	1	150# SLIP ON FLANGE*	A105
5	1	BASKET	1/8" PERF 304 SS, 20 MESH SLEEVE
6	1	GASKET	SS SPIRAL WOUND
7	-	STUDS	ASTM A 193-B7
8	-	NUTS	ASTM A194-2H
9	1	REDUCING RING	A-36
10	2	1" NPT THREAD-O-LET	A105



	A	B	C	D
8 X 6	22.00"	10.00"	9.00"	8.00"
8 X 8	22.00"	10.00"	9.00"	8.00"
10 X 8	23.00"	11.00"	12.00"	9.50"
10 X 6	23.00"	11.00"	12.00"	9.50"
12 X 10	26.00"	13.00"	13.00"	10.50"
12 X 12	26.00"	13.00"	13.00"	10.50"
14 X 12	27.00"	14.00"	15.00"	11.875"
14 X 14	27.00"	14.00"	16.00"	11.875"
16 X 14	32.50"	17.00"	16.00"	12.50"
16 X 16	32.50"	17.00"	16.00"	12.50"
18 X 16	33.00"	17.50"	18.00"	13.75"
18 X 18	33.00"	17.50"	18.00"	13.75"
20 X 18	33.50"	23.00"	20.00"	16.00"
20 X 20	33.50"	23.00"	20.00"	16.00"
24 X 20	40.00"	23.00"	22.00"	19.50"
24 X 24	40.00"	23.00"	22.00"	19.50"
30 X 24	60.00"	24.00"	28.00"	23.00"
30 X 30	60.00"	24.00"	28.00"	23.00"

ALSO AVAILABLE IN 300# ANSI AND 600# ANSI

OTHER MATERIALS, LIKE 304SS/316SS ARE AVAILABLE.

THESE ARE MADE TO ORDER. DIMENSIONS CAN BE ALTERED

DESIGNED FOR FULL ANSI PER B16.5.

TOLERANCES (EXCEPT AS NOTED)		FABROTECH INDUSTRIES, INC. RONKONKOMA, NEW YORK 11779	
DECIMAL	REVISION NO.	SCALE	DRAWN BY
+		NONE	JMR
-			
FRACTIONAL	TITLE		
+	150# FLG'D SUCTION DIFFUSER		
-			
ANGULAR	DATE	DRAWING No.	
+			
-			