

WALL SPLIT SOLAR



WOLF INTERNATIONAL



DESCRIPTION

PRODUCT RANGE.....Pg 03

OFF GRID APPLICATION.....Pg 05

HYBRID OFF/ON GRID MIXED AUTO.....Pg 06

INSTALLTION DETAILS.....Pg 11

INDOOR UNIT.....Pg 12

OUTDOOR UNIT.....Pg 13

ADDITIONAL APPLICATIONS.....Pg 14

PRODUCTION LINES.....Pg 15

R & D.....Pg 19

Solar Aircon



Scan QRCode for App smart control



100% COPPER



SOLAR PANEL CAPABLE



WIFI CAPABLE



HOT & COOL OPERATION



BUILT-IN SOLAR INVERTER



PCB+MPPT



MC4 For PV



PRODUCT RANGE

Wall Type - 9000,12000,18000,24000 Btu/Hr



Standard Ducted



Mini Duct System

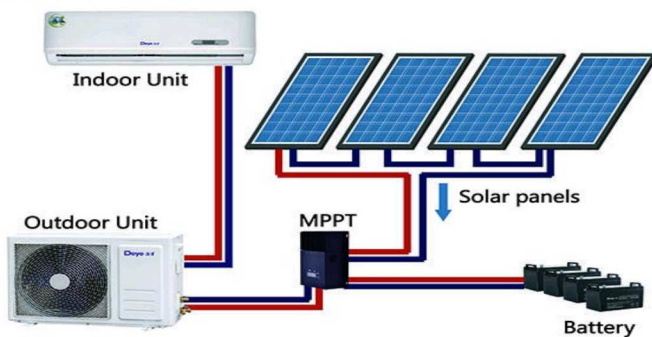
Cassette Type

Universal Type

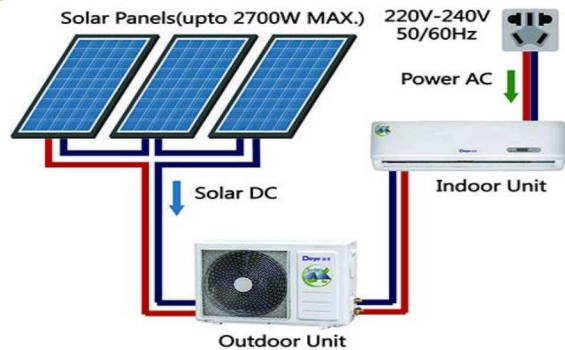


Intelligent Power Management Solar Air Conditioner

OFF Grid



On Grid Hybrid





OFF GRID APPLICATION



Capacity Cool & Heat	9000Btu	12000Btu	18000Btu	24000Btu
Room Area	10-15m ²	14-21m ²	20-30m ²	32-42m ²
Voltage	48V DC	48V DC	48V DC	48V DC
Rated Power	640(200-990)	850(190-1250)	1600(185-2000)	2100(450-3300)
Refrigerant	R410a	R410a	R410a	R410a
Compressor	GMCC	GMCC	Panasonic	GMCC
Load Qty 20'GP / 40'HQ	75/200	75/200	68/150	50/120
Certificate	CE/CB/G-MARK	CE/CB/G-MARK	CE/CB/G-MARK	CE/CB/G-MARK



Power Saving Calculation

Off grid working yearly saving

If off grid works, testing normally **7am to 17pm** air conditioner works without any city electricity, 10 hours per day.

Capacity	Power consumption Kw	Work hours per day	Work days per year	Electricity Cost usd/Kwh	Total Saving usd
12000btu	1	10	300	0.1	300usd
18000btu	1.6	10	300	0.1	480usd
24000btu	2	10	300	0.1	600usd

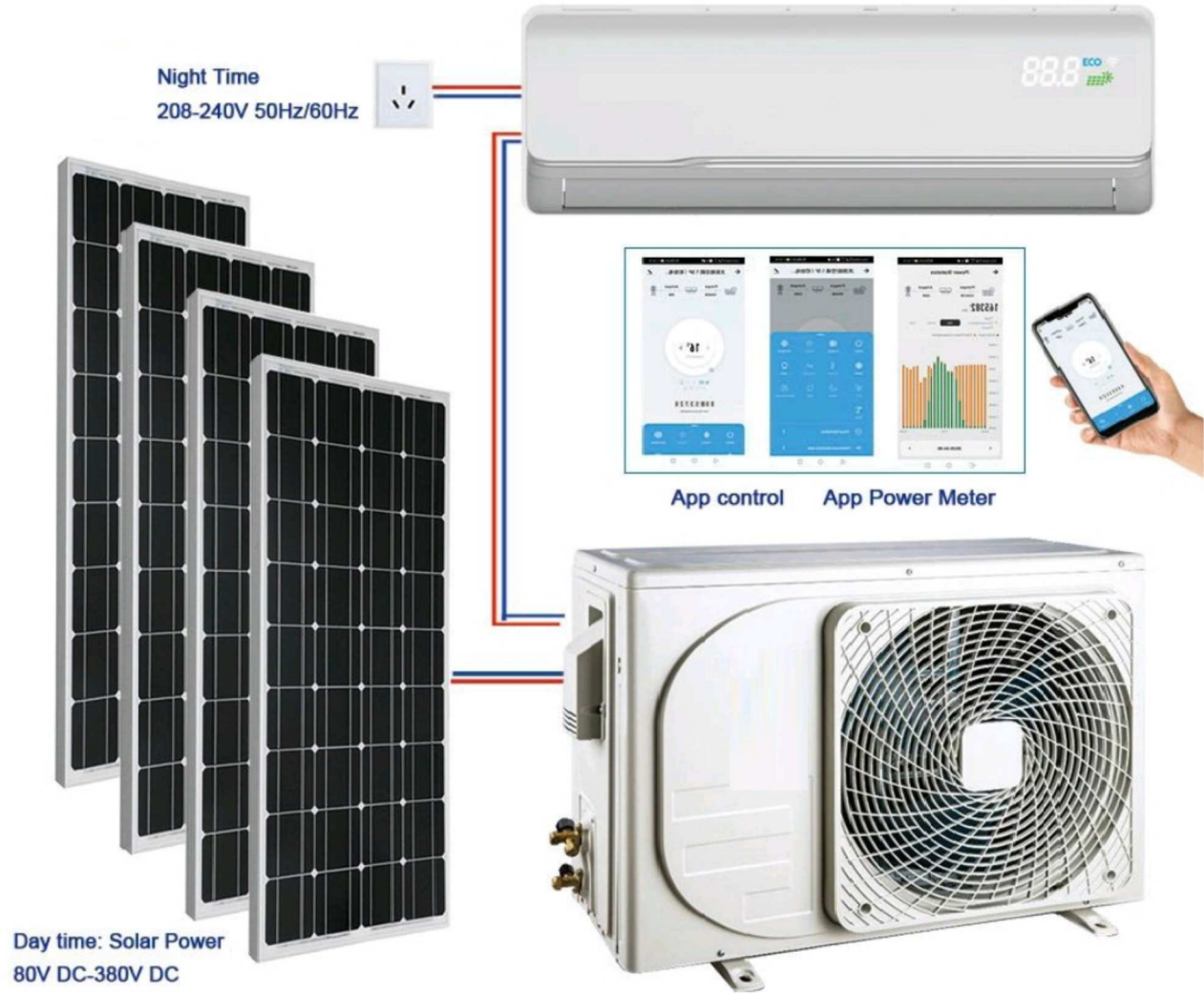


DC48V Solar Inverter Air Conditioner

Model		9000BTU	12000BTU	18000BTU	24000BTU
Type		T3 solar Inverter	T3 solar Inverter	T3 solar Inverter	T3 solar Inverter
Room Square	m ²	8-15	15-20	20-30	32-42
Power Supply	DC	DC48V	DC48V	DC48V	DC48V
Rated Cooling	Capacity	2600(1000-3500)	3500(1000-4100)	5275(1200-5600)	7000(2500-7800)
	BTU	9000(3400-12000)	12000(3400-14000)	18000 (4100-19000)	24000 (8500-26600)
Cooling Power input	W	650(200-980)	850(190-1250)	1450(185-2000)	2150(450-3300)
	W	3800(800-4000)	4300(1000-4500)	5800(1200-6800)	7800(2000-8800)
Rated Heating	Capacity	13000(2700-13400)	14600(3400-15300)	20000 (4100-23000)	26600 (10200-30000)
	BTU	1100(160-1300)	1100(150-1700)	1570(220-2500)	2330(390-3500)
Heating Power input	W	1100(160-1300)	1100(150-1700)	1570(220-2500)	2330(390-3500)
	L/h	1.0	1.3	1.7	2.5
Moisture Removal	L/h	1.0	1.3	1.7	2.5
Compressor	Model	ASN98D22UFZ	ASN98D22UFZ	5RD138ZAC21	ATF235D22UMT
	Brand	GMCC	GMCC	Panasonic	GMCC
	Capacity	2935	2935	3565	7135
Indoor air flow(Turbo/Hi/Mi/Lo)	m ³ /h	580/520/440/370	650/620/500/400	1020/1000/800/700	1200/1150/850/740
Indoor noise level (Turbo/Hi/Mi/Lo)	dB(A)	41/39/35/27	42.5/42/37/29	46/42/35	50/45/39
Outdoor air flow	m ³ /h	1500	1800	2000	3500
Outdoor noise level	dB(A)	≤51	≤52	≤55	≤58
Refrigerant type and charge volume	g	R410a(940)	R410a(1130)	R410a(1650)	R410a(2200)
Refrigerant piping	Gas side/Liquid side (inch)	3/8 1/4	3/8 1/4	1/2 1/4	5/8 3/8
Ambient temp (cooling/heating)	°C	16-55/-20-31	16-55/-20-31	16-55/-20-31	16-55/-20-31
Application area	m ²	8-15	15-20	20-30	32-42
Indoor unit	Dimension(W*H*D)	823*300*244	823*300*244	1150*300*260	1150*300*260
	Packing (W*H*D)	890*360*300	890*360*300	1230*360*320	1230*360*320
	Net weight /Gross weight	9.8/12.2	9.8/12.2	14/16.8	15/17.4
Outdoor unit	Dimension(W*D*H)	800*325*550	800*325*550	800*325*550	912*375*712
	Packing (W*D*H)	900*400*610	900*400*610	900*400*610	1040*465*768
	Net/Gross weight	29.5/33.5	32.5/36.5	35.5/40	54.5/62
Loading QTY	40" HQ	210	210	150	125
Solar Charger Controller	48V/60Ah	1	1	1	1-2
Standard Solar Panel	285W-315W	5	6	8	10
Lead Acid Battery	12V 100Ah/ 150Ah/ 200Ah	4	4	8	8



HYBRID - Off Grid / On Grid / Mixed / Auto

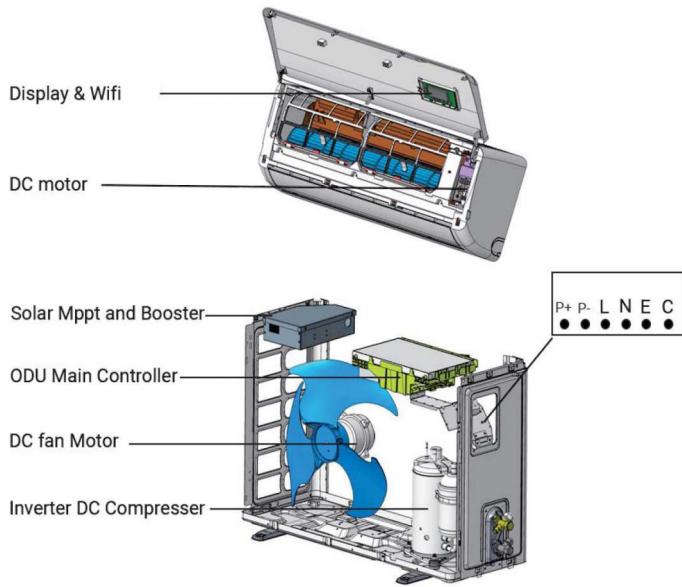


On Grid Model : Solar DC+ Grid AC



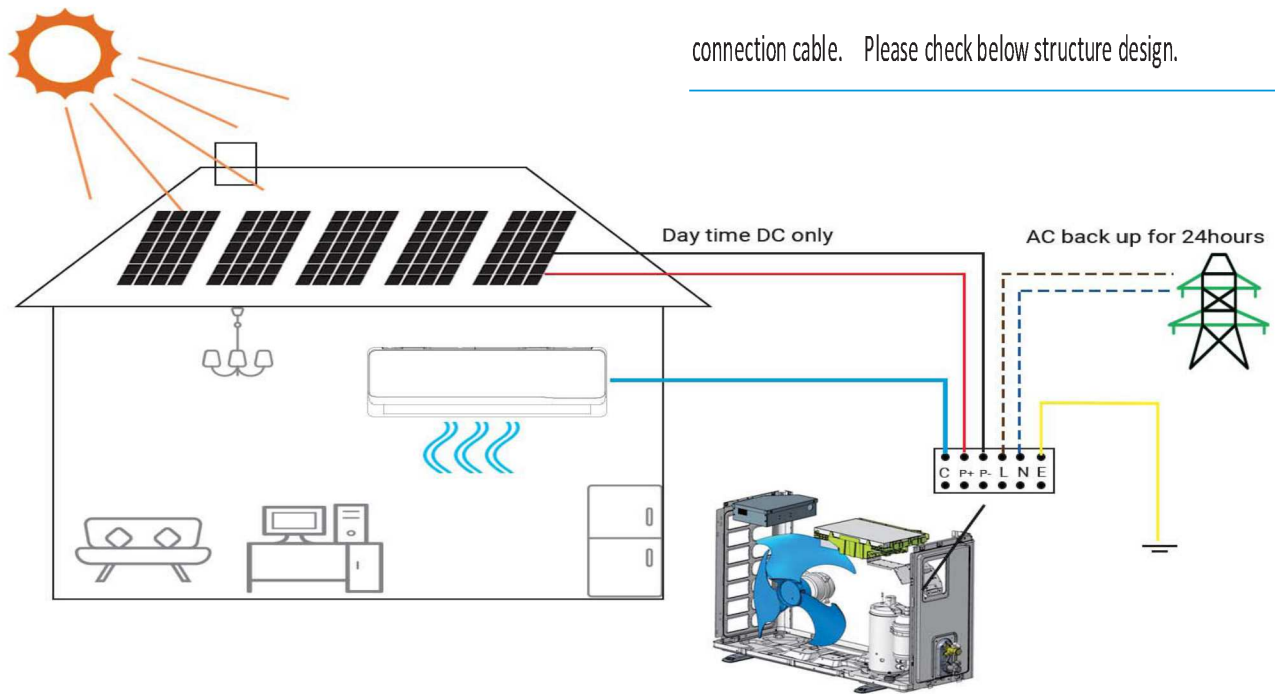
Capacity Cool & Heat	9000Btu	12000Btu	18000Btu	24000Btu
Room Area	10-15m ²	14-21m ²	20-30m ²	32-42m ²
Voltage DC	80V - 350V	80V - 350V	80V - 350V	80V - 350V
Voltage AC	220V-240V/50-60Hz	220V-240V/50-60Hz	220V-240V/50-60Hz	220V-240V/50-60Hz
Rated Power	640(200-990)	850(190-1250)	1600(185-2000)	2100(450-3300)
Refrigerant	R410a	R410a	R410a	R410a
Compressor	GMCC	GMCC	Panasonic	GMCC
Load Qty 20'GP / 40'HQ	75/200	75/200	68/150	50/120
Certificate	CE/CB/G-MARK	CE/CB/G-MARK	CE/CB/G-MARK	CE/CB/G-MARK





4th generation hybrid ACDC solar air conditioner is based on full DC inverter air conditioner VRF technology. The main components of our unit is DC inverter compressor, DC fan motor, solar MPPT booster and inverter air conditioner controller.

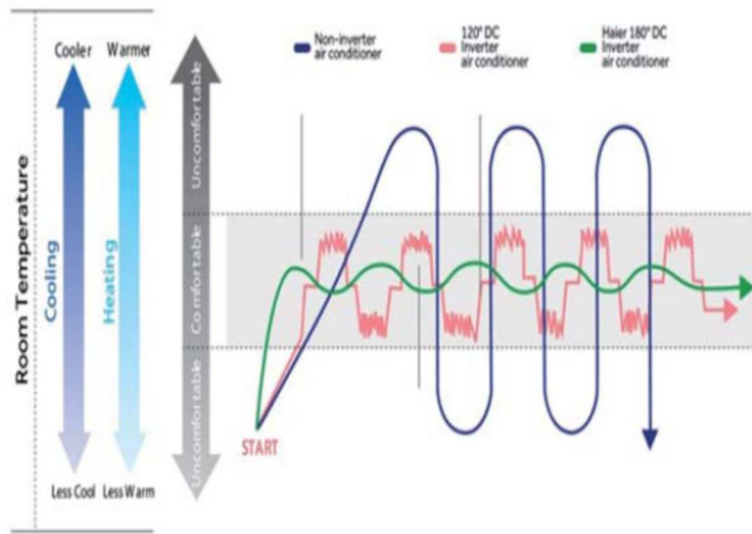
The hybrid ACDC unit power supply from outdoor unit, it has MC4 connector P+/P- for DC solar panel directly power supply, it has (L/N/E) for AC grid power supply. And indoor unit connect with outdoor unit by connection cable. Please check below structure design.



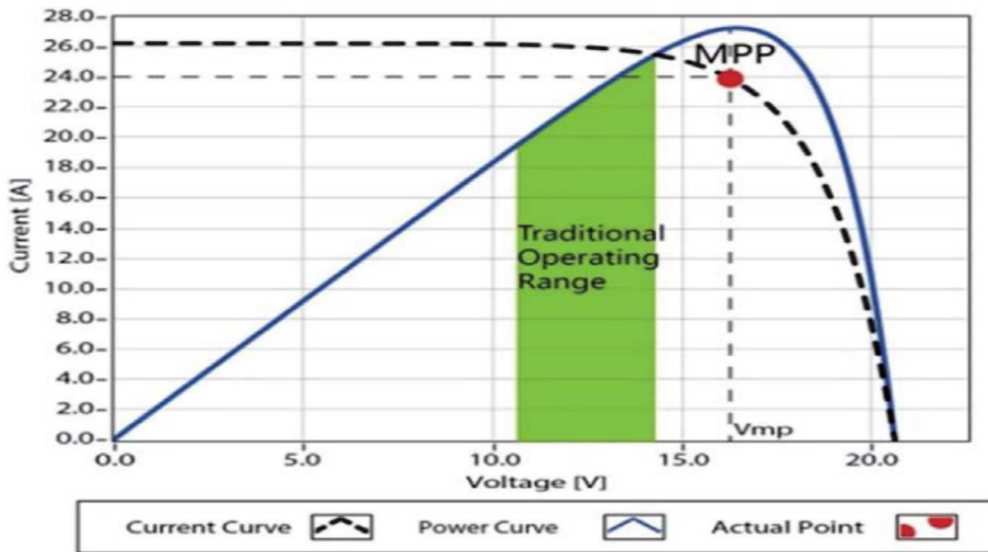
4th generation hybrid ACDC solar air conditioner works with solar panel unstable DC power directly from 7am to 17pm day time with power minimum 300w, no need solar inverter, no need grid power, no need battery. Rainy day, it will works mix power AC+DC and priority from solar power. At night, it automatically get grid AC power same as DAIKIN high efficiency normal inverter air conditioner. The unit with WiFi function can be controlled anywhere through WiFi or Bluetooth, and App with DC power meter and AC power meter, you can fully check how much energy saving or using energy through APP smart power meter function.



OPERATIONAL DETAILS



Twin Rotary Compressor



MPPT efficiency:99.9%

DC to DC

0 convert lose

10+ years life design

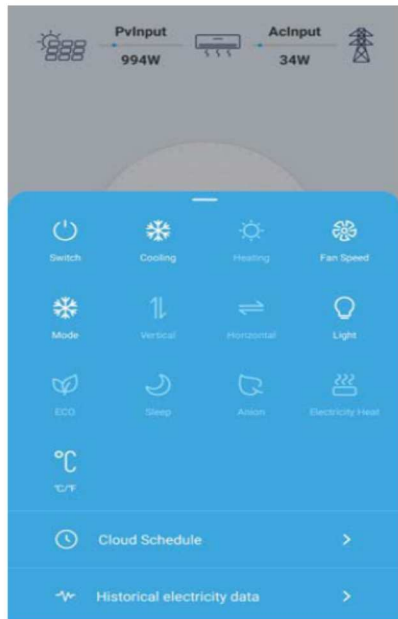
80V-380V Mppt

180°sine wave DC inverter controller technology for inverter air conditioner, “SVPWM” which makes the compressor ran at low frequency below 0.1Hz, improve the utilization of the DC compressor by 13% compared with 120 DC inverter controller technology. By 32% compared with Non-inverter air conditioner.

(Patent Number: ZL 2009 1 0127633.8)



WiFi Smart Control



App power meter



Solar & Grid Indicator



Use WiFi or Bluetooth to control solar air conditioner anywhere.

Share device to your family member

Timer setting On & Off

Control multi devices in one APP

Check below data from App power meter:

DC power input

AC power input

Total saving by solar

Total power using

Daily/Months/yearly power data

Solar Aircon



Scan QRCode for App smart control



Solar Panel Calculation

		12000btu	18000btu	24000btu
DC Power request	DC	80V-380V	80V-380V	80V-380V
DC power current	A	</=10A	</=10A	</=10A
Cooling Power Consumption	W	940(190-1270)	1400(220-2100)	1790(300-3200)
Solar panel 300w or less	PCS	4	6	8
Solar panel 300w to 360w	PCS	4	5	7
Solar panel 400w to 450w	PCS	3	4	6
ConnectingWay		In Series	In Series	In Series



PERFORMANCE DATA

Hybrid AC+DC Solar Inverter Air Conditioner				
Model	9000BTU	12000BTU	18000BTU	24000BTU
Type	T3 Solar Inverter	T3 Solar Inverter	T3 Solar Inverter	T3 Solar Inverter
Room Square	8-15	15-20	20-30	32-42
Power supply	220V-240V/50-60HZ	220V-240V/50-60HZ	220V-240V/50-60HZ	220V-240V/50-60HZ
	50-350V	50-350V	50-350V	50-350V
Rated Cooling Capacity	2600(1000-3500)	3500(1000-4100)	5000(1200-6000)	6740(2500-8200)
	9000(3400-12000)	12000(3400-14000)	17000 (4100-20400)	23000 (8500-28000)
Cooling Power input	650(200-980)	930(190-1250)	1440(185-2000)	1940(450-3300)
Rated Heating Capacity	3800(800-4000)	4200(1000-4500)	6200(1200-6800)	7600(2000-9000)
	13000(2700-13400)	14330(3400-15300)	21000 (4100-23000)	26000 (10200-30800)
Heating Power input	1100(160-1300)	1100(150-1700)	1700(220-2500)	2300(390-3500)
Moisture Removal	1.0	1.3	1.7	2.5
	ASN98D22UFZ	ASN98D22UFZ	5RD138ZAC21	ATF235D22UMT
Compressor	GMCC	GMCC	Panasonic	GMCC
Capacity	2935	2935	3565	7135
Indoor air flow(Turbo/Hi/Mi/Lo)	580/520/440/370	650/620/500/400	1020/1000/800/700	1200/1150/850/740
Indoor noise level (Turbo/Hi/Mi/Lo)	41/39/35/27	42.5/42/37/29	46/42/35	50/45/39
Outdoor air flow	1500	1800	2000	3500
Outdoor noise level	≤51	≤52	≤55	≤58
Refrigerant type and charge volume	R410a(940)	R410a(1200)	R410a(1550)	R410a(2200)
Max Design pressure	4.3/1.1	4.3/1.1	4.3/1.1	4.3/1.1
Refrigerant piping	3/8 1/4	3/8 1/4	1/2 1/4	5/8 3/8
Ambient temp (cooling/heating)	16-55/-20-31	16-55/-20-31	16-55/-20-31	16-55/-20-31
Application area	8-15	15-20	20-30	32-42
Indoor unit	Dimension(W*H*D)	823*300*244	823*300*244	1150*300*260
	Packing (W*H*D)	890*360*300	890*360*300	1230*360*320
	Net weight/Gross weight	10.8/12.7	10.8/12.7	14/16.8
Outdoor unit	Dimension(W*D*H)	800*325*550	800*325*550	912*375*712
	Packing (W*D*H)	900*400*610	900*400*610	1040*465*768
	Net/Gross weight	30/34	32.5/36.5	35.5/40
Loading QTY	40" HQ	210	150	125
Standard Solar Panel 285W-315W	PCS	2	3	6

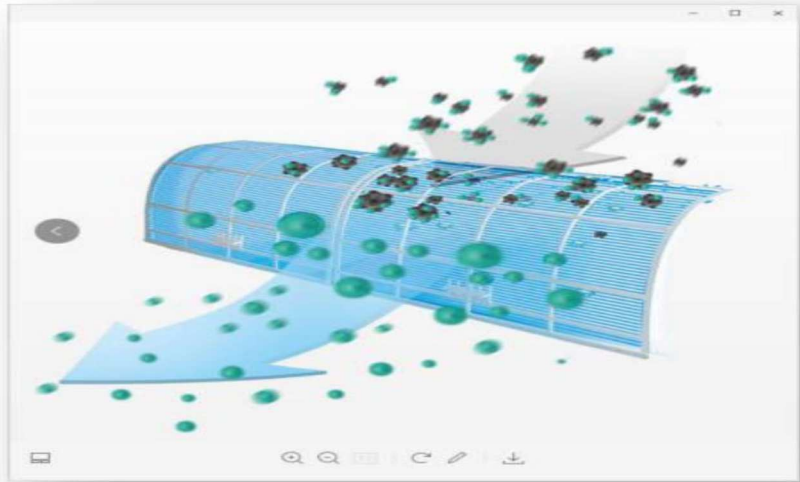
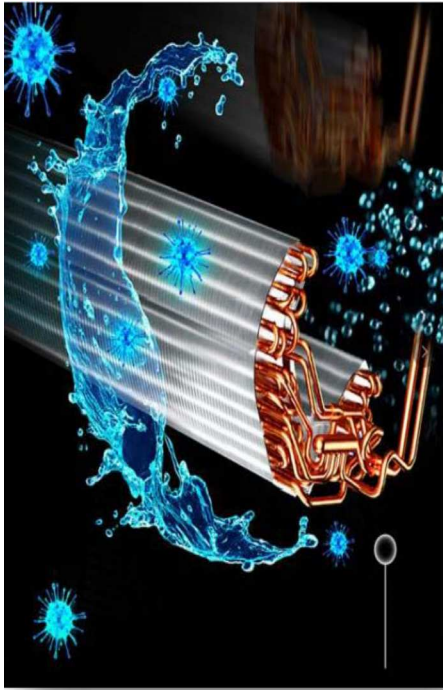


Model	Solar panel In Series connection	QTY
DGWA1-ACDCBLW-12K WiFi 12000BTU/ 1.5P/ 1 Ton		(280-400W) 4pcs
		(400-500W) 3pcs
DGWA1-ACDCBLW-18K WiFi 18000BTU/ 2P/ 1.5 Ton		(280-400W) 6pcs
		(400-500W) 5pcs
DGWA1-ACDCBLW-24K WiFi 24000BTU/ 3P/ 2 Ton		(280-400W) 8pcs
		(400-500W) 7pcs

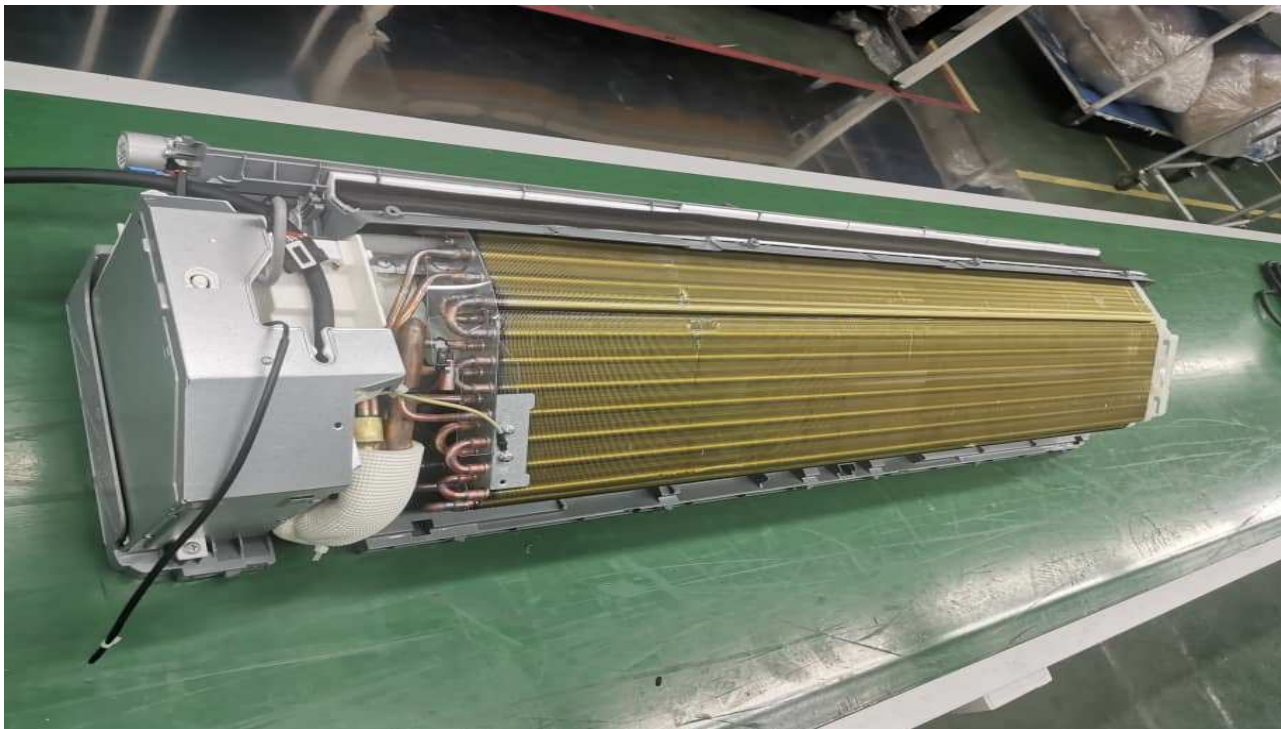
Packing list		
Carton	Name	QTY
Indoor package	Indoor unit	1
	Remote controller	1
	Drain Pipe	1
	Installation manual	1
	user manual	1
	Hanger plate	1
	Indoor & Outdoor Cable	1
	Mc4 connector	2
	Accessory Bag	1
Outdoor package	Outdoor unit	1
	Copper connection Pipe	2
	Scotch tape	1



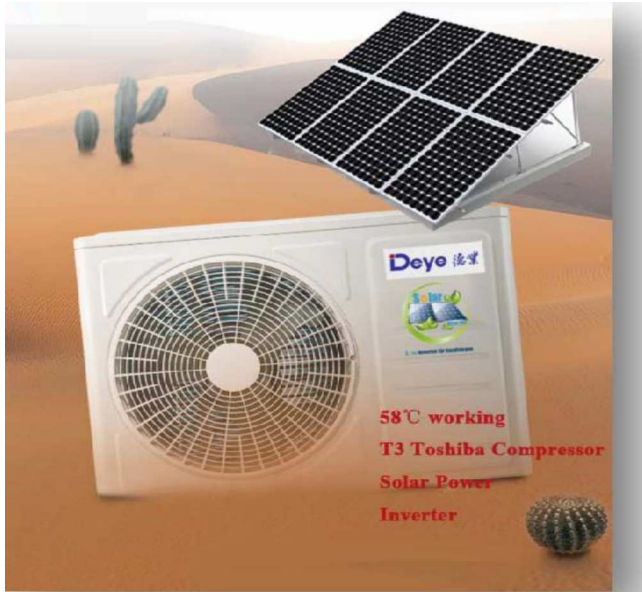
**ANTI BACTERIA
FILTER**



GOLD FIN COATING FOR FAST MOISTURE REOMOVAL



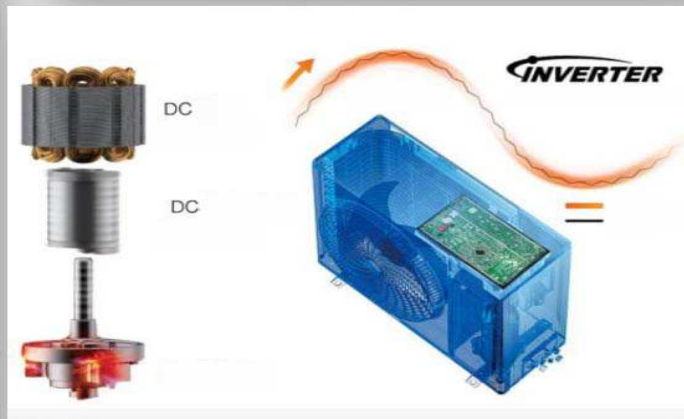
OUTDOOR UNIT



T1 / T3 CONDITION UPTO 58 DEG C



INVERTER COMPRESSOR
R 410 A



CONDENSER FAN DC MOTOR

HIGH QUALITY PARTS

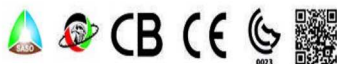
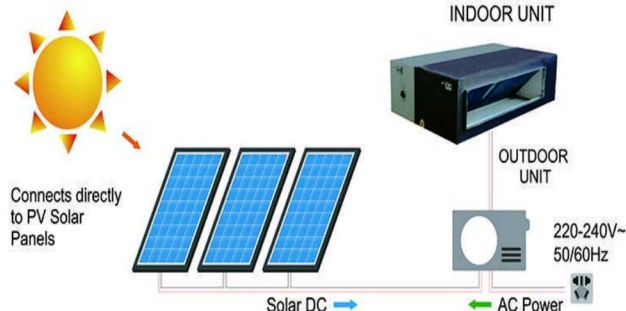


ANTI CORROSION GOLD FIN COATING



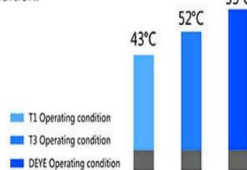


AC/DC Hybrid solar air conditioner-concealed duct series



Up To 55°C Running

Enjoy excellent performance even under ambient temperature up to 55°C, suitable for T3 operating condition.

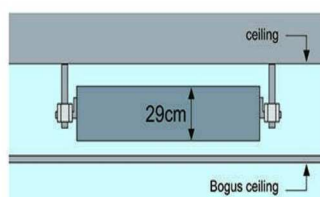


Fresh Air Intake

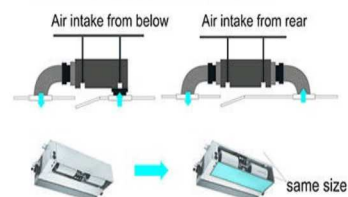
Fresh air makes healthy, comfortable life.



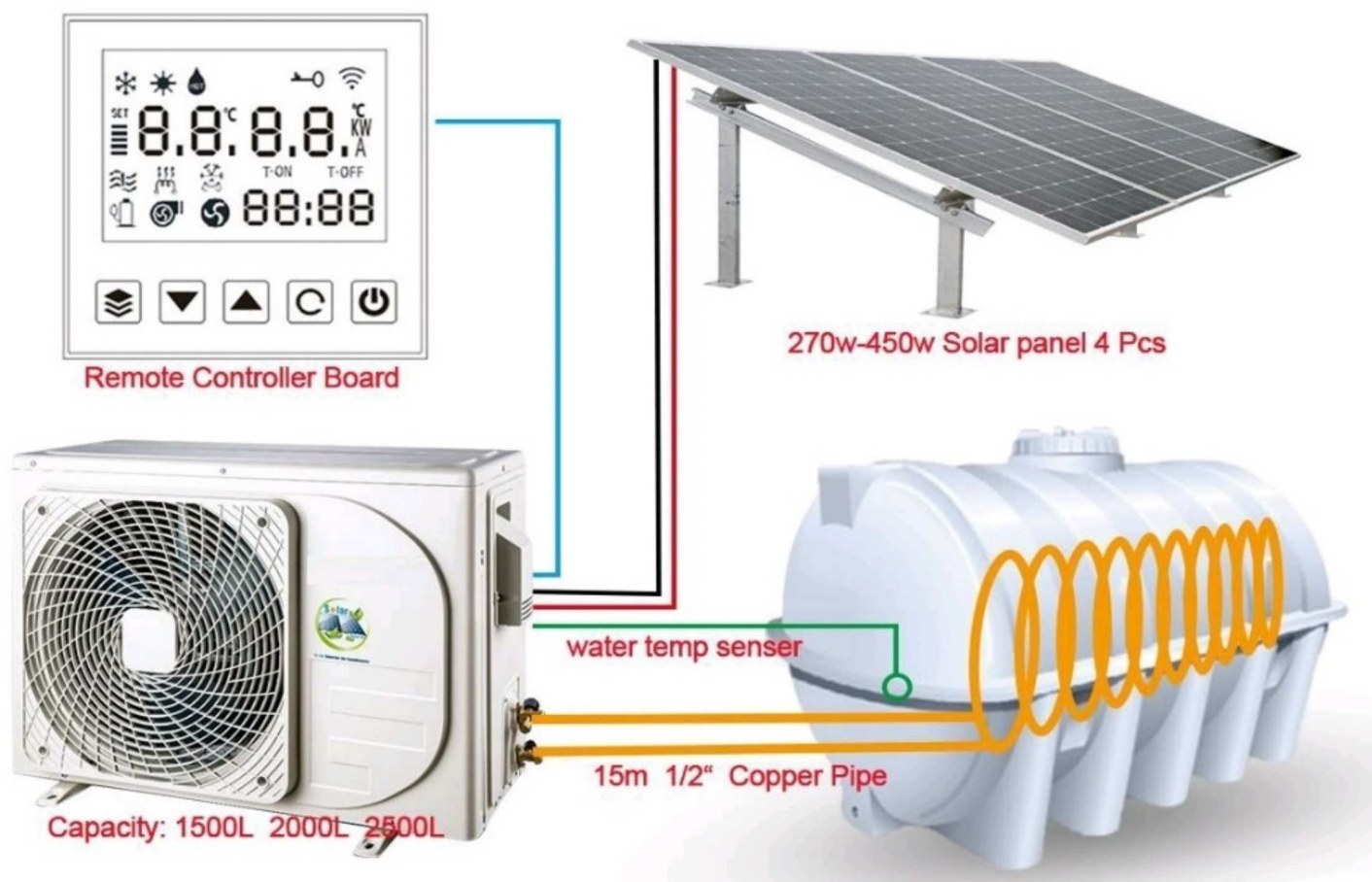
Saving space: 29cm super thin design

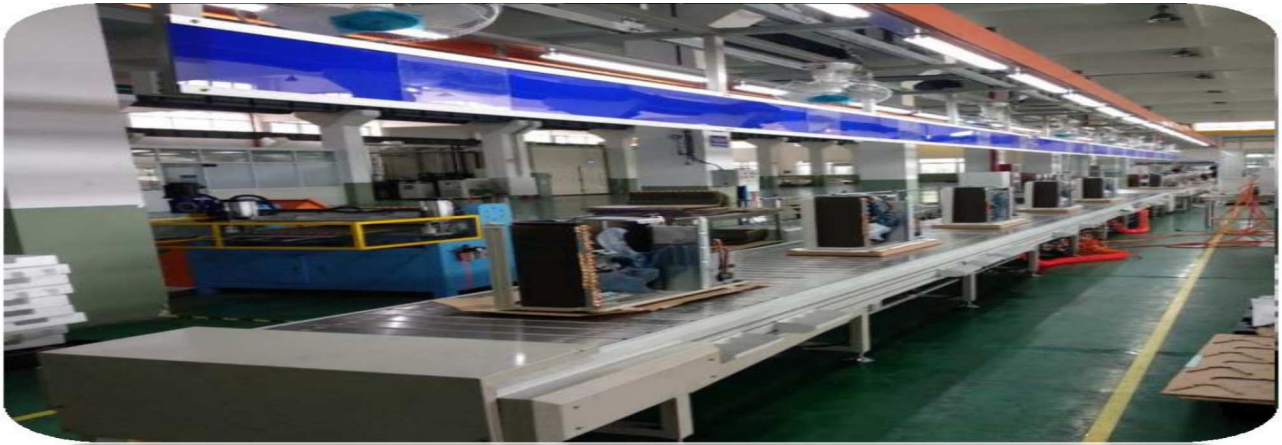


Flexible Air Intake Options



HYBRID ACDC Solar Water Heater / Cooler

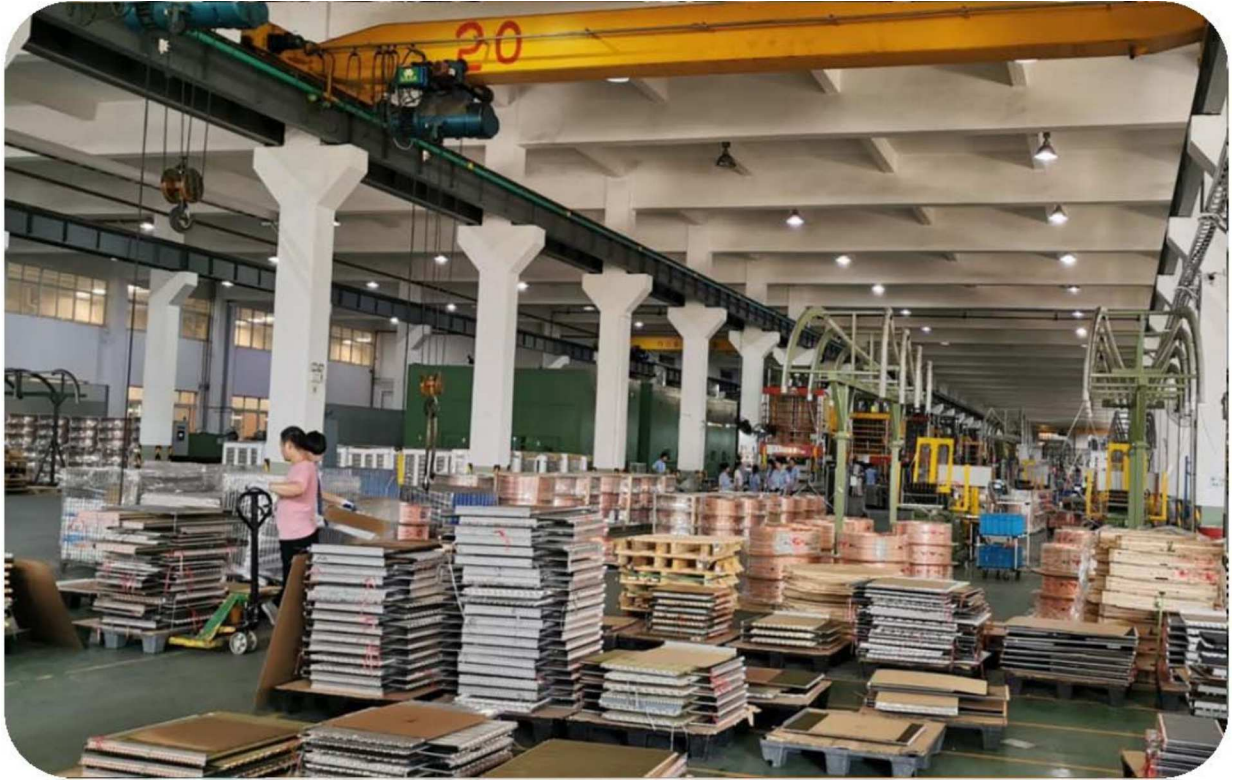






PLASTIC MOULDING







ELECTRONICS PRODUCTION



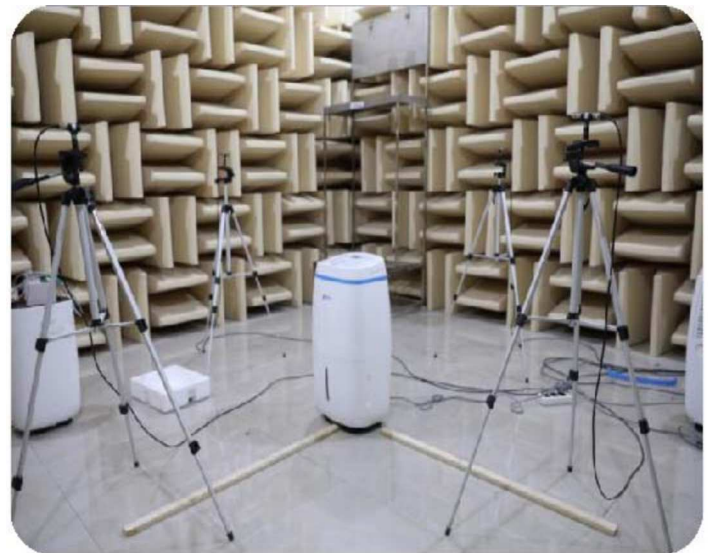


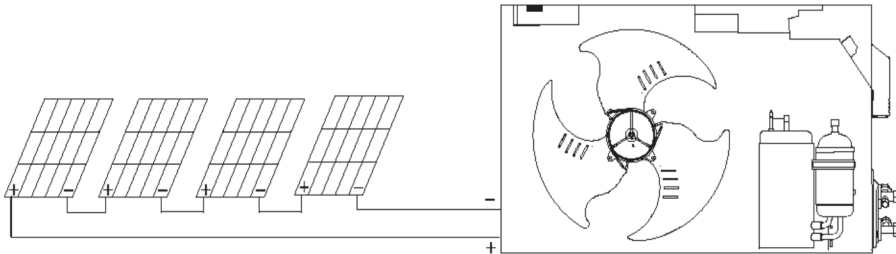
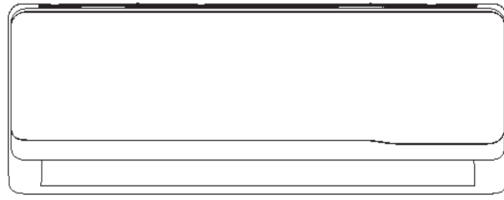
Solar Air conditioner R&D engineers reach 49. Japanese research center established in 2018.

Annual R&D investment reach 1 million usd and increase 10% each year.

CNAS testing Lab, EMC Lab

4 Enthalpy lab (-30 to 60 degree)





Main Office :

WOLFrost International LLP

India & Far East

Regional Sales & After Sales Service Contact :

WOLF International - SAIF ZONE

Middle East & North Africa

for more information VISIT

www.wolfmep.com

Contact :

info@wolfmep.com