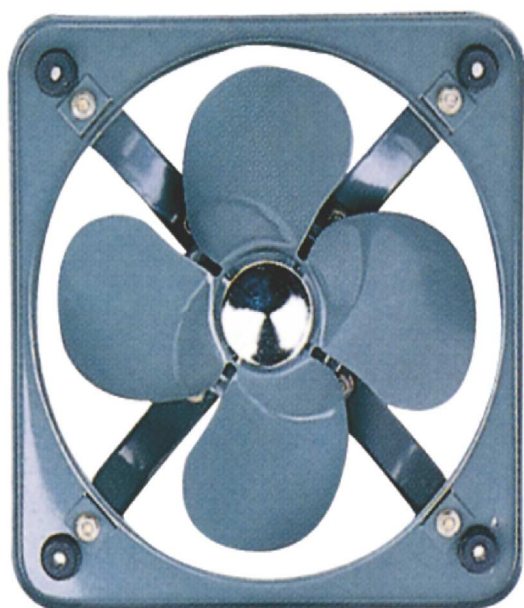


# WI-INDUSTRIAL VENTILATION



WOLF INTERNATIONAL



## Industrial Axial Flow Exhaust Fan - IAE1 Series

IAE1 Series is designed for direct exhaust to outdoor to maintain the best indoor ventilation and air circulation.

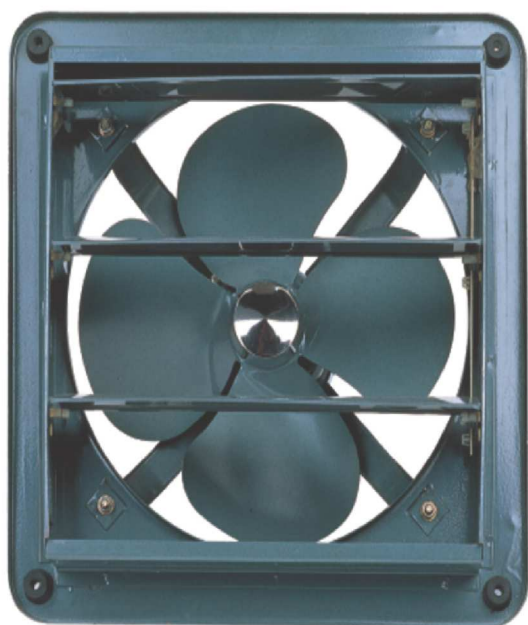
### DESCRIPTION

IAE1 Series is designed for direct exhaust to outdoor to maintain the best indoor ventilation and air circulation.

- The fans are recommended for small air volume at low pressure requirement including small restaurant, café, bar, commercial premise and workshop, etc.
- Excellence performance motor with professional ball bearing and built-in thermal protection
- Vibration proof cushion between motor supporting arms and fan body.

### SPECIFICATION

Model No.	Dimension (mm)	Blade Size (mm)	Voltage	Input Power (W)	Sound Level (dB(A))	Speed (R.P.M)	Air Volume (m <sup>3</sup> /min)
IAE120	230 x 230 x 125	200	220V-50Hz	28	53	1350	8.04
IAE125	284 x 284 x 145	250	220V-50Hz	33	55	1350	12.5
IAE130	355 x 355 x 155	300	220V-50Hz	38	58	1350	18.5
IAE135	415 x 415 x 178	350	220V-50Hz	54	62	1350	23.5



## Industrial Axial Flow Exhaust Fan - IAE3 Series

IAE3 Series is designed for direct exhaust to outdoor to maintain the best indoor ventilation and air circulation.

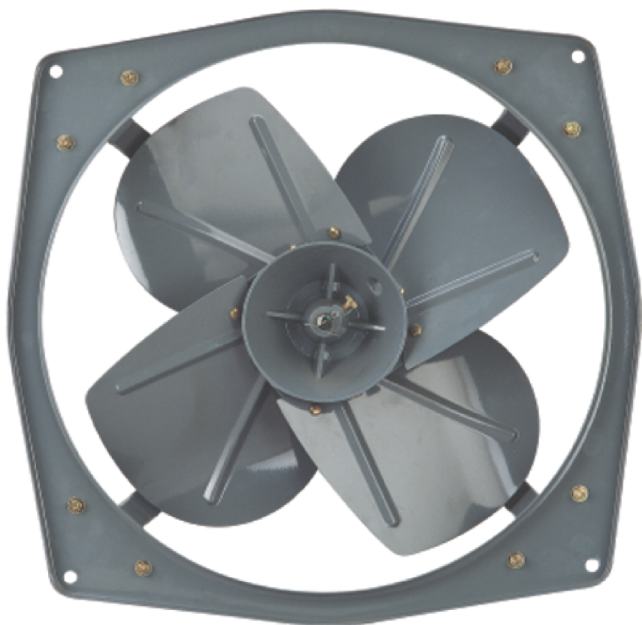
### DESCRIPTION

IAE3 Series is designed for direct exhaust to outdoor to maintain the best indoor ventilation and air circulation.

- The fans are recommended for small air volume at low pressure requirement including small restaurant, café, bar, commercial premise and workshop, etc.
- Excellence performance motor with professional ball bearing and built-in thermal protection
- Vibration proof cushion between motor supporting arms and fan body.
- Feature with front shutter.

### SPECIFICATION

Model No.	Dimension (mm)	Blade Size (mm)	Voltage	Input Power (W)	Sound Level (dB(A))	Speed (R.P.M)	Air Volume (m <sup>3</sup> /min)
IAE320B	294 x 294 x 184	200	220V~50Hz	28	53	1350	8.04
IAE325B	318 x 318 x 201	250	220V~50Hz	33	55	1350	12.5
IAE330B	376 x 376 x 212	300	220V~50Hz	38	58	1350	18.5
IAE335B	453 x 453 x 223	350	220V~50Hz	54	62	1350	23.5



## Industrial Axial Flow Exhaust Fan - IAE4 Series

IAE4 Series is designed for direct exhaust to outdoor to maintain the best indoor ventilation and air circulation.

### DESCRIPTION

IAE4 Series is designed for direct exhaust to outdoor to maintain the best indoor ventilation and air circulation.

- The fans are recommended for large air volume at high air pressure requirement including large scale factory, workshop, commercial / industrial drying room, agricultural extract & supply, greenhouse, warehouse, etc.
- Excellence performance motor with professional ball bearing and built-in thermal protection
- Vibration proof cushion between motor supporting arms and fan body.
- Optional front & back grilles.

### SPECIFICATION

Model No.	Dimension (mm)	Blade Size (mm)	Voltage	Input Power (W)	Sound Level (dB(A))	Speed (R.P.M)	Air Volume (m <sup>3</sup> /min)
IAE430	388 x 388 x 308	300	220V~50Hz	120	65	1400	33
IAE438	473 x 473 x 368	380	220V~50Hz	180	70	1400	60
IAE445	550 x 550 x 447.5	450	220V~50Hz	255	74	1400	85
IAE460-900	710 x 710 x 590	600	220V~50Hz	320	77	900	100
IAE460-1400	710 x 710 x 590	600	220V~50Hz	750	80	1400	130



## Industrial Axial Flow Exhaust Fan – IAE7 Series

IAE7 Series is designed for direct exhaust to outdoor to maintain the best indoor ventilation and air circulation.

### DESCRIPTION

IAE7 Series is designed for direct exhaust to outdoor to maintain the best indoor ventilation and air circulation.

- The fans are recommended for large air volume at high air pressure requirement including large scale factory, workshop, commercial / industrial drying room, agricultural extract & supply, greenhouse, etc.
- Excellence asynchronous induction type motor with professional ball bearing and built-in thermal protection.
- Vibration proof cushion between motor supporting arms and fan body.
- Optional front & back grilles
- Hi grade rolled sheet steel impellers and well balanced design.

### SPECIFICATION

Model No.	Dimension (mm)	Blade Size (mm)	Voltage	Input Power (W)	Sound Level (dB(A))	Speed (R.P.M)	Air Volume (m <sup>3</sup> /min)
IAE730	377 x 377 x 308	300	220V~50Hz	100	65	1400	33
IAE738	480 x 480 x 304	380	220V~50Hz	180	70	1400	60
IAE745	580 x 580 x 390	450	220V~50Hz	320	74	1400	85
IAE760-900	746 x 746 x 425	600	220V~50Hz	320	77	900	100
IAE760-1400	746 x 746 x 425	600	220V~50Hz	750	80	1400	130





## Industrial Axial Flow Exhaust Fan - IAEL Series

IAEL Series is designed for direct exhaust to outdoor to maintain the best indoor ventilation and air circulation.

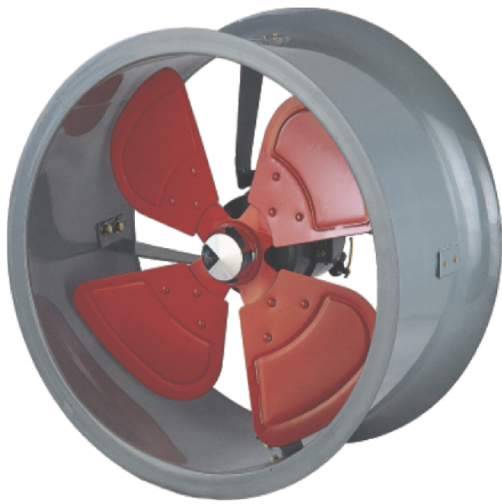
### DESCRIPTION

IAEL Series is designed for direct exhaust to outdoor to maintain the best indoor ventilation and air circulation.

- The fans are recommended for large air volume at high air pressure requirement including large scale factory, workshop, commercial / industrial drying room, agricultural extract & supply, greenhouse, etc.
- Excellence asynchronous induction type motor with professional ball bearing and built-in thermal protection.
- Vibration proof cushion between motor supporting arms and fan body.
- Optional front & back grilles
- Hi grade rolled sheet steel impellers and well balanced design.

### SPECIFICATION

Model No	Dimension (mm)	Blade Size (mm)	Voltage	Input Power (W)	Sound Level (dB(A))	Speed (R.P.M)	Air Volume (m <sup>3</sup> /min)
IAEL40	475 x 475 x 223.5	400	220V~50Hz	150	68	1400	48
IAEL50	585 x 585 x 239.5	500	220V~50Hz	150	65	900	68
IAEL60	716 x 716 x 270	600	220V~50Hz	280	72	900	115



## Industrial Cylindrical Cased Axial Flow Fan – CAF1 Series

CAF1 Series is designed for direct exhaust to outdoor to maintain the best indoor ventilation, air circulation, cooling and drying.

### DESCRIPTION

CAF1 Series is designed for direct exhaust to outdoor to maintain the best indoor ventilation, air circulation, cooling and drying.

- The fans are recommended for large air volume at high air pressure ventilation and cooling of work places including production plant, factory, warehouses; cooling of motors, electrical machines, etc., oven drying or paint drying, etc.
- Wide size range to suit different application environment and requirement.
- Excellence asynchronous induction type motor with professional ball bearing and built-in thermal protection; silicon steel stator and squirrel cage rotor.
- Single phase or Three phase for selection.
- Wall mount, castor stand or with wheels are available.
- Optional front & back grilles.
- Connectable duct casing.
- Well balanced steel impellers.

### SPECIFICATION

Model No.	Dimension (mm)	Blade Size (mm)	Voltage	Input Power (W)	Sound Level (dB(A))	Speed (R.P.M)	Air Volume (m <sup>3</sup> /min)	Air Pressure (Pa)
CAF1-25	295 x 295 x 190	250	220V~50Hz	40	60	1300	11.4	35
CAF1-30	350 x 350 x 190	300	220V~50Hz	55	63	1300	16.4	38
CAF1-40	470 x 470 x 245	400	220V~50Hz	150	67	1400	50	95
CAF1-50	570 x 570 x 245	500	220V~50Hz	250	70	1400	98	111



## Industrial Cylindrical Cased Axial Flow Fan - CAF2 Series

CAF2 Series is designed for direct exhaust to outdoor to maintain the best indoor ventilation, air circulation, cooling and drying.

### DESCRIPTION

CAF2 Series is designed for direct exhaust to outdoor to maintain the best indoor ventilation, air circulation, cooling and drying.

- The fans are recommended for large air volume at high air pressure ventilation and coolig of work places including production plant, factory, warehouses; cooling of motors, electrical machines, etc., oven drying or paint drying, etc.
- Wide size range to suit different application environment and requirement.
- Excellence asynchronous induction type motor with professional ball bearing and built-in thermal protection; silicon steel stator and squirrel cage rotor.
- Single phase or Three phase for selection.
- Wall mount, castor stand or with wheels are available.
- Optional front & back grilles.
- Connectable duct casing.
- Well balanced steel impellers.

### SPECIFICATION

Model No.	Dimension (mm)	Blade Size (mm)	Voltage	Input Power (W)	Sound Level (dB(A))	Speed (R.P.M)	Air Volume (m <sup>3</sup> /min)	Air Pressure (Pa)
CAF2-40	460 x 460 x 300	400	220V~50Hz	250	68	1400	69	100
CAF2-50	570 x 570 x 300	500	220V~50Hz	350	72	1400	126	116
CAF2-60	675 x 675 x 300	600	220V~50Hz	350	66	900	142	88





## Industrial Cylindrical Cased Axial Flow Fan - CAF3 Series

CAF3 Series is designed for direct exhaust to outdoor to maintain the best indoor ventilation, air circulation, cooling and drying.

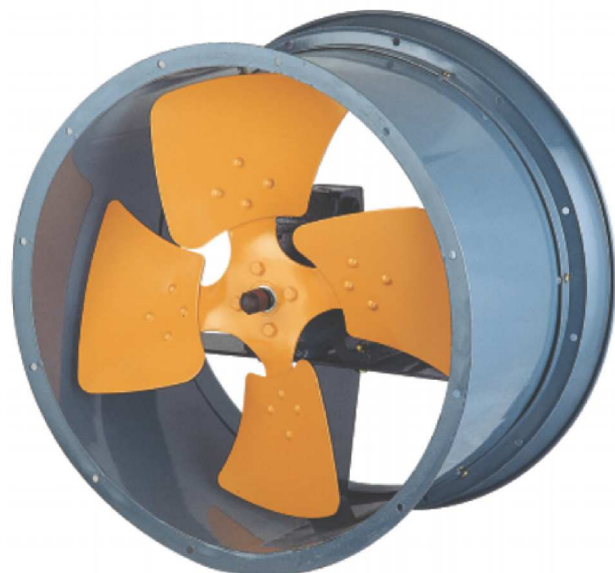
### DESCRIPTION

CAF3 Series is designed for direct exhaust to outdoor to maintain the best indoor ventilation, air circulation, cooling and drying.

- The fans are recommended for large air volume at high air pressure ventilation and cooling of work places including production plant, factory, warehouses; cooling of motors, electrical machines, etc., oven drying or paint drying, etc.
- Wide size range to suit different application environment and requirement.
- Excellence asynchronous induction type motor with professional ball bearing and built-in thermal protection; silicon steel stator and squirrel cage rotor.
- Single phase or Three phase for selection.
- Wall mount, castor stand or with wheels are available.
- Optional front & back grilles.
- Connectable duct casing.
- Well balanced steel impellers.

### SPECIFICATION

Model No.	Dimension (mm)	Blade Size (mm)	Voltage	Input Power (W)	Sound Level (dB(A))	Speed (R.P.M)	Air Volume (m <sup>3</sup> /min)	Air Pressure (Pa)
CAF3-35	360 x 360 x 285	350	220V~50Hz	180	55	1400	55	93
CAF3-40	410 x 410 x 300	400	220V~50Hz	300	60	1400	85	115
CAF3-50	560 x 560 x 300	500	220V~50Hz	430	67	1400	150	131
CAF3-60	660 x 660 x 300	600	220V~50Hz	695	75	1400	213	150



## Industrial Cylindrical Cased Axial Flow Fan - CAF4 Series

CAF4 Series is designed for direct exhaust to outdoor to maintain the best indoor ventilation, air circulation, cooling and drying.

### DESCRIPTION

CAF4 Series is designed for direct exhaust to outdoor to maintain the best indoor ventilation, air circulation, cooling and drying.

- The fans are recommended for large air volume at high air pressure ventilation and cooling of work places including production plant, factory, warehouses; cooling of motors, electrical machines, etc., oven drying or paint drying, etc.
- Wide size range to suit different application environment and requirement.
- Excellence asynchronous induction type motor with professional ball bearing and built-in thermal protection; silicon steel stator and squirrel cage rotor.
- Single phase or Three phase for selection.
- Wall mount, castor stand or with wheels are available.
- Optional front & back grilles.
- Connectable duct casing.
- Well balanced steel impellers.

### SPECIFICATION

Model No.	Dimension (mm)	Blade Size (mm)	Voltage	Input Power (W)	Sound Level (dB(A))	Speed (R.P.M)	Air Volume (m <sup>3</sup> /min)	Air Pressure (Pa)
CAF4-40	410 x 410 x 345	400	220V~50Hz	1100	70	1420	88	166
CAF4-50	510 x 510 x 360	500	220V~50Hz	1500	75	1420	155	196
CAF4-60	610 x 610 x 482	600	220V~50Hz	2200	80	1420	314	294



## Super Blow Portable Drum Fan - FE6-60D

FE6-60D is designed for residential, commercial and industrial ventilation, cooling, indoor circulation applications in shops, gym, offices, warehouses and factory, dairy farms, stadium, shaded playground, poolside, etc.

### DESCRIPTION

FE6-60D is designed for residential, commercial and industrial ventilation, cooling, indoor circulation applications in shops, gym, offices, warehouses and factory, dairy farms, stadium, shaded playground, poolside, etc.

- Sizes for different application requirement: 24"Ø/600mm, 30"Ø/750mm, 36"Ø/900mm.

- \* With Totally Enclosed Motor fro dust proof for tough operating environment.
- \* With Open Motor for general indoor application.
- \* Easy-to carry Handle & Wheels / Wheels on Castor
- \* Aluminum impellers are well balanced and with powerful pitch angle design for high velocity.
- \* Adjustable tile angle
- \* 3-speed controller.

### SPECIFICATION

Model No.	Dimension (mm)	Blade Size (mm)	Voltage	Input Power (W)	Sound Level (dB(A))	Speed (R.P.M)	Air Volume (m <sup>3</sup> /min)
FE6-60D	740 x 310 x 770	600	220V-50Hz	295	67	1350	235



## Super Blow Portable Drum Fan - FE6-75D

FE6-75D is designed for residential, commercial and industrial ventilation, cooling, indoor circulation applications in shops, gym, offices, warehouses and factory, dairy farms, stadium, shaded playground, poolside, etc.

### DESCRIPTION

FE6-75D is designed for residential, commercial and industrial ventilation, cooling, indoor circulation applications in shops, gym, offices, warehouses and factory, dairy farms, stadium, shaded playground, poolside, etc.

- Sizes for different application requirement: 24" / 600mm, 30" / 750mm, 36" / 900mm.

- \* With Totally Enclosed Motor for dust proof for tough operating environment.
- \* With Open Motor for general indoor application.
- \* Easy-to carry Handle & Wheels / Wheels on Castor
- \* Aluminum impellers are well balanced and with powerful pitch angle design for high velocity.
- \* Adjustable tile angle
- \* 3-speed controller.

### SPECIFICATION

Model No.	Dimension (mm)	Blade Size (mm)	Voltage	Input Power (W)	Sound Level (dB(A))	Speed (R.P.M)	Air Volume (m <sup>3</sup> /min)
FE6-75D	830 x 310 x 865	750	220V~50Hz	420	66	1250	320





## Super Blow Portable Drum Fan -FE6-90D3

FE6-90D3 is designed for residential, commercial and industrial ventilation, cooling, indoor circulation applications in shops, gym, offices, warehouses and factory, dairy farms, stadium, shaded playground, poolside, etc.

### DESCRIPTION

FE6-90D3 is designed for residential, commercial and industrial ventilation, cooling, indoor circulation applications in shops, gym, offices, warehouses and factory, dairy farms, stadium, shaded playground, poolside, etc.

- Sizes for different application requirement: 24" / 600mm, 30" / 750mm, 36" / 900mm.

\* With Totally Enclosed Motor for dust proof for tough operating environment.

\* With Open Motor for general indoor application.

\* Easy-to carry Handle & Wheels / Wheels on Castor

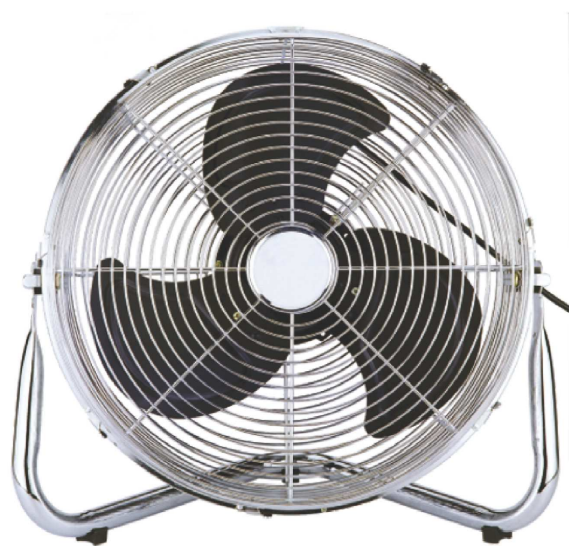
\* Aluminum impellers are well balanced and with powerful pitch angle design for high velocity.

\* 3-speed controller.

### SPECIFICATION

Model No.	Dimension (mm)	Blade Size (mm)	Voltage	Input Power (W)	Sound Level (dB(A))	Speed (R.P.M)	Air Volume (m <sup>3</sup> /min)
FE6-90D3	980 x 300 x 994	900	220V-50Hz	510	70	1200	380





## Tornado Fan – HVF Series

HVF Series is specially designed for residential, commercial and industrial ventilation, cooling, indoor air circulation applications, e.g. houses, apartments, shops, churches, gym, offices, restaurants, warehouses and factories, etc.

### DESCRIPTION

HVF Series is specially designed for residential, commercial and industrial ventilation, cooling, indoor air circulation applications, e.g. houses, apartments, shops, churches, gym, offices, restaurants, warehouses and factories, etc.

- Wide size range for selection: 12"□/300mm, 14"□/350mm, 16"□/400mm, 18"□/450mm, 20"□/500mm
- Full metal construction for vibration free and stable operation.
- Wall mountable (optional hanging hooks ).
- High performance and heavy duty motors for powerful air velocity.
- Rolled steel or aluminum blade with well balanced design for smooth and stable operating..
- Adjustable tilt angle.
- 3-speed setting provides low-med-high air flow.
- the best complementary to air-conditioning in indoor air circulation.

### SPECIFICATION

Model No.	Dimension (mm)	Blade Size (mm)	Voltage	Input Power (W)	Sound Level (dB(A))	Speed (R.P.M)	Air Volume (m <sup>3</sup> /min)
HVF-30X	395 x 195 x 390	300	220V~50Hz	High: 85 Medium: 65 Low: 50	High: 56 Medium: 53 Low: 50	High: 1350 Medium: 1200 Low: 1050	High: 55 Medium: 46 Low: 40
HVF-40X	515 x 230 x 490	400	220V~50Hz	High: 120 Medium: 100 Low: 80	High: 58 Medium: 53 Low: 51	High: 1400 Medium: 1250 Low: 1100	High: 85 Medium: 66 Low: 52
HVF-45X	575 x 210 x 560	450	220V~50Hz	High: 200 Medium: 180 Low: 140	High: 62 Medium: 56 Low: 53	High: 1400 Medium: 1250 Low: 1100	High: 124 Medium: 103 Low: 75



Main Office :

**WOLFrost International LLP**

India & Far East

for more information VISIT

[www.wolfmep.com](http://www.wolfmep.com)

Regional Sales & After Sales Service Contact :

**WOLF International - SAIF ZONE**

Middle East & North Africa

Contact :

[info@wolfmep.com](mailto:info@wolfmep.com)

WI / TUSMU / EU / 09-20 / R0