

# AXIOM | G | P | S

Unique hexagonal foam shapes that reduce surface tension and increase envelopment around the ischia and coccyx.

The cover features a 4-way stretch, water-resistant pleated top layer. By only using one cover, surface tension is reduced, providing better immersion into the hexagonal foam shapes.



Water resistant zipper and zipper pull make it simple to don and doff the cover while still protecting the foam.

Easy-to-reach front handle comes with utility loops for hanging accessories.



## WIDTH

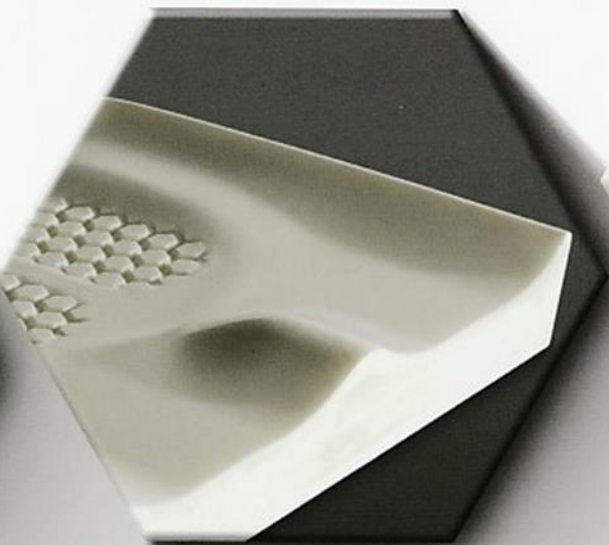
14 - 22"  
35.5 - 55.9 cm





## AXIOM | G

A feature-rich, premium general use cushion that is anything but *Basic*. With its Pre-contoured shape, surface tension reducing well and high quality foam & cover materials, it is sure to be the professional's choice for years to come.



## AXIOM | P

Offering all the same great features of the Axiom G, with better medial and lateral stability. With superior positioning features and surface tension reduction in the well, the **Axiom P** proves positioning cushions can still be comfortable while providing positioning and stability.



## AXIOM | S

A skin protection cushion offering all the great features of the Axiom G, with a special emphasis on the area that distributes pressure around the tissues that support the bony prominences. Deeper hexagonal shapes allow for increased immersion with better envelopment, making Axiom S a great entry level skin protection cushion.

### DEPTH

14 - 22"  
35.5 - 55.9 cm



### HEIGHT

Leg Troughs  
2.25" | 5.7 cm



### HEIGHT

Overall  
G | 3" | 7.6 cm  
P | 3.5" | 8.9 cm  
S | 3" | 7.6 cm



### WEIGHT

G | 2.2 lbs. | .99 kg  
P | 2.3 lbs. | 1 kg  
S | 2.2 lbs. | .99 kg



### WEIGHT CAP.

350 lbs.  
158 kg



### HCPCS CODE

G - E2601/2  
P - E2605/6  
S - E2603/4