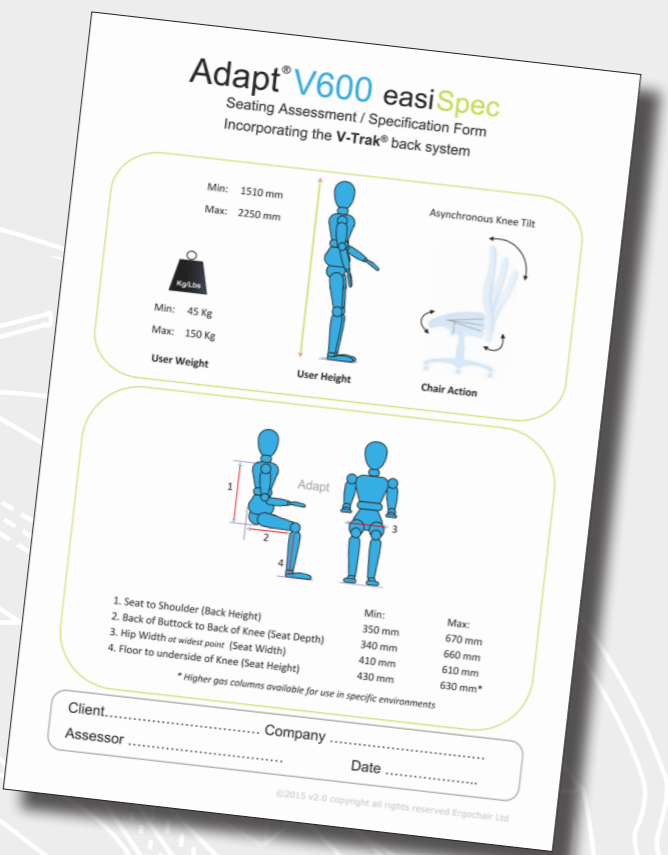


# How to specify

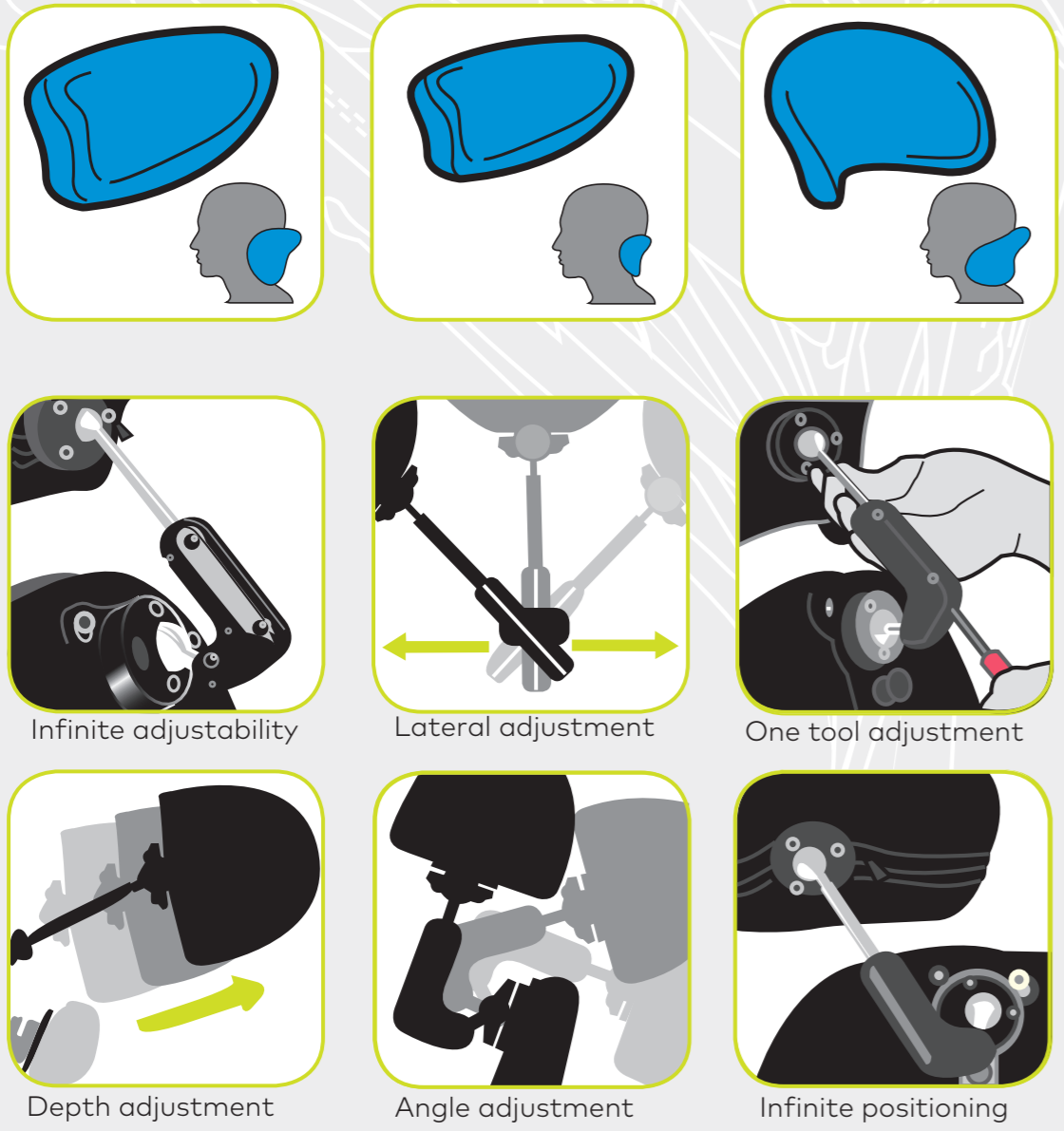
- Using the V-easiSpec measuring tape (see inside) select the desired backrest combination model. (H1 – H4, W1 – W4)
- Go to the Adapt V600 EasiSpec® Specification Guide – available to download from [www.ergochair.co.uk](http://www.ergochair.co.uk) – This will take you step-by-step through all other available Adaptations™
- Contact us for help and specification advice. Our details are shown on the reverse of this brochure.



# Head rest system options

V600 V-trak backrests offer an innovative headrest adaptation with infinite positioning possibilities! Ideal for asymmetrical profiling and specific postural and medical conditions.

- Infinite lockable articulation
- Dual pivot-point action
- 3 Pad shape/size options (incorporate the blue images from as mentioned above)
- Telescopic Height Adjustment
- Adjustable wings for lateral articulation
- Easily and quickly adjustable to accommodate changing needs.



V-Trak is a registered trademark of V-Trak Ltd. Adapt is a registered trademark of Ergochair Ltd.

# Changing the profile of backrest contouring

The revolutionary new multi-adjustable office chair for postural care issues



# V600

## Adapt® V-Trak

better comfort all round

### All the features you would expect in an adapt® chair but with infinite V-Trak® adaptability

Introducing adapt® with V-Trak, a brand new concept in backrest contouring for a wide range of postural care issues.

The V600 offers all of the well-loved features and adaptations of the adapt 600 range alongside innovative modular backrest technology.

Much more than just a mesh-covered frame, the V600 is breathable yet infinitely adjustable.

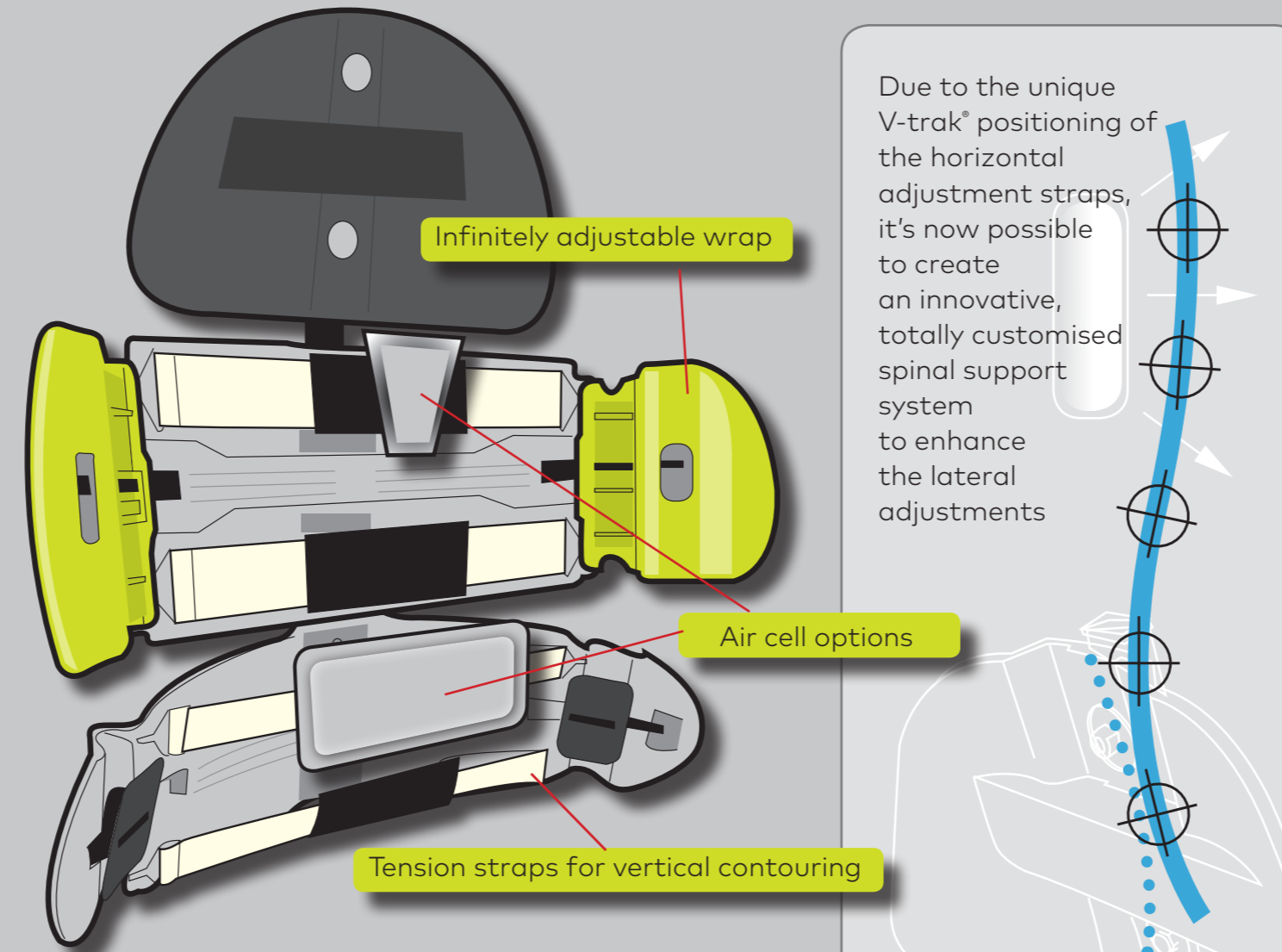
Choice of 9 V-Trak adjustable backrests

Multi-adjustable armrest options

Choice of 4 adaptable seat templates

Full range of adapt 600 Adaptations™

adapt 600 mechanism

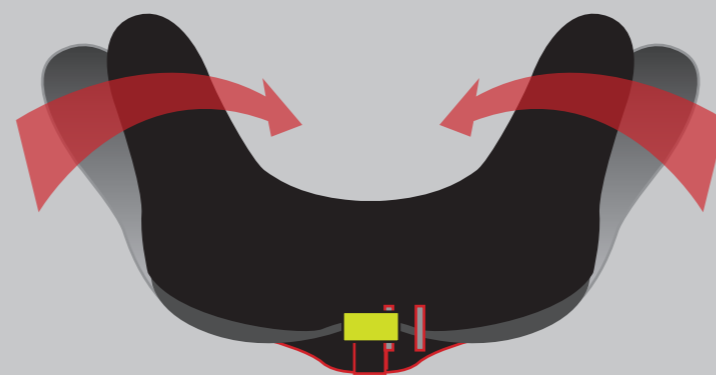


Never before available in office seating

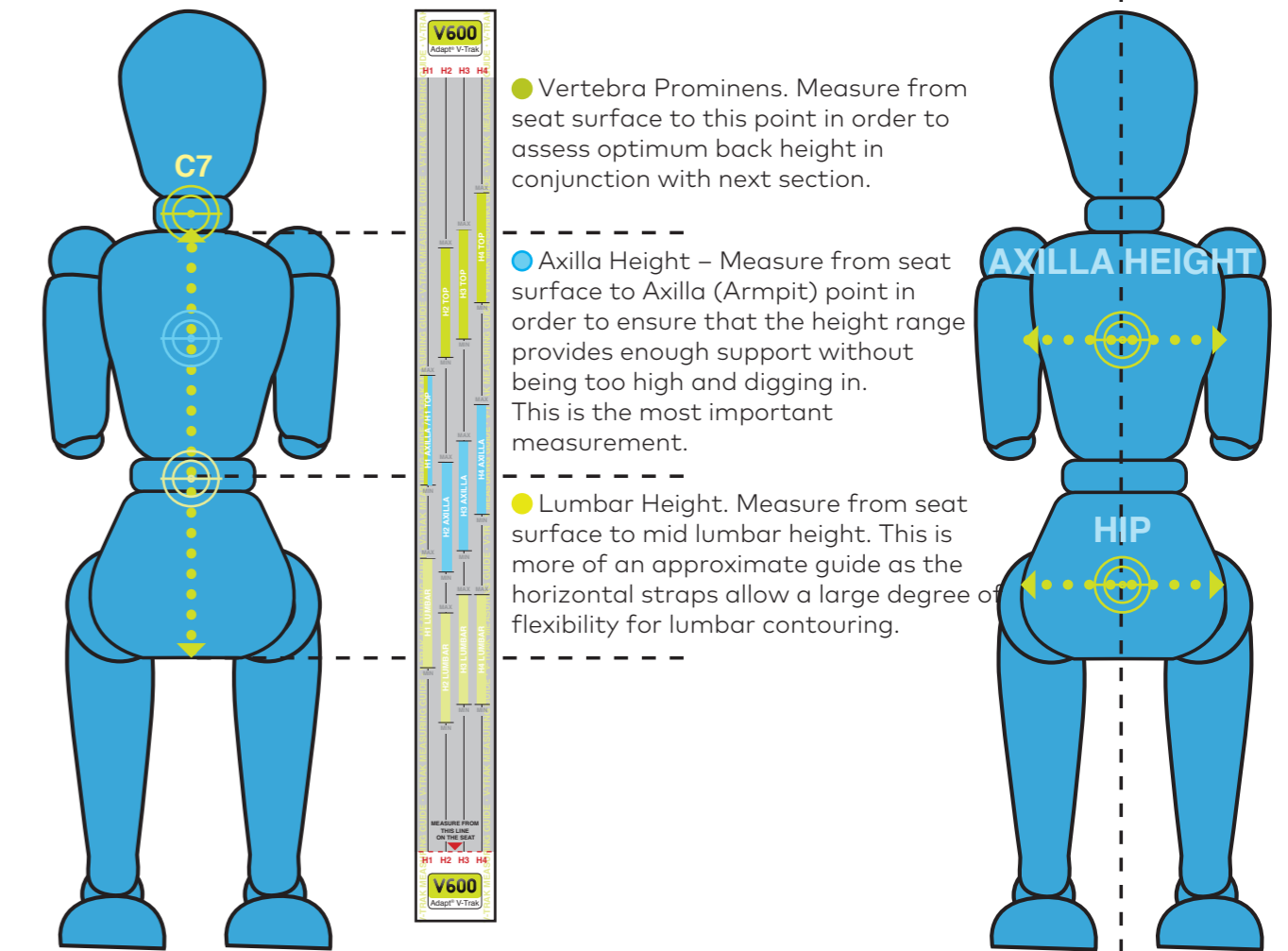
Exclusive to the adapt® V600 across Europe and the UK, V-Trak® technology has been developed for wheelchair use to address the specific postural issues such individual seating demands

Our V600 backrests provide 5-way adjustment:

- Height
- Angle
- Lateral Wrap
- Spinal Contouring
- Adaptations™ Air-cell options.



### How the adapt® V600 measures up



#### Measuring the Back Height

Placing the bottom of the V-EasiSpec measuring guide at the seat surface, where indicated, run it up the spine to the C7 position (vertebra prominens)

Select which of the printed scales best matches the back height and axilla height, also bearing in mind the lumbar height preference. Select the corresponding back height option H1 - H4

#### The wrap

Increased lateral support can be achieved by selecting a deeper contour option

#### Measuring the Back Width

Measure the width at two points:

- Across the upper back, between the armpits
- Hip to hip across the pelvis

Place centre line of V-EasiSpec measuring guide across vertical line of the spine and wrap around to the desired point of body contact.

Select the corresponding back width option:

W1-W4 which offers the optimum wrap support.

