

World's first tech enabled affordable consulting firm.

INSIDE

How has AI impacted consulting?

Let us embrace it AI has impacted consulting. We are the first movers

How are we using AI and ML?

We use AI to reduce our costs and pass on the benefits to you.

Low-cost consulting

Our unique consulting model to minimize the cost and maximize value.

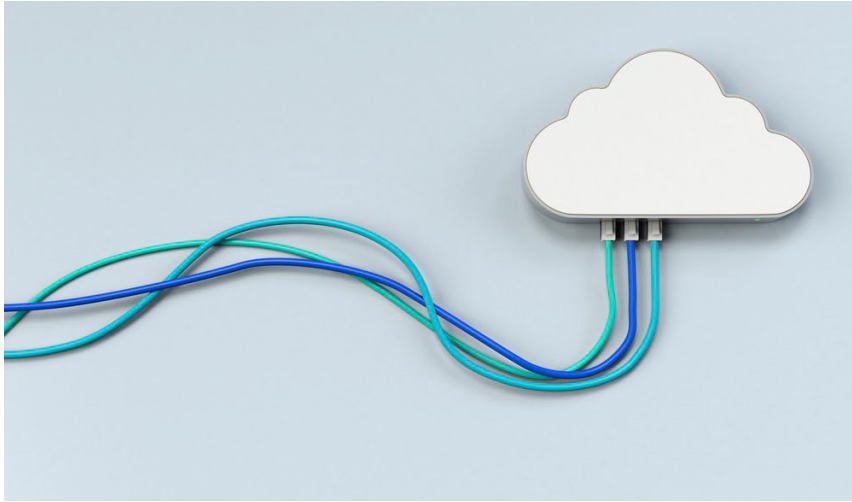


How has AI impacted consulting?

By Bigline Communications

AI has significantly transformed the consulting industry by enhancing efficiency, improving decision-making, and creating new opportunities for delivering value. The mundane tasks of analyzing the data and creating flashy reports can be done by AI.

AI enables rapid analysis of vast datasets, uncovering trends and insights for data-driven strategies. AI automates repetitive tasks, streamlining operations and allowing consultants to focus on complex challenges. Predictive tools and scenario modeling improve foresight, while personalized solutions and 24/7 chatbot support enhance client engagement. AI also identifies cost-saving opportunities, optimizes workflows, and mitigates risks like fraud. By enabling innovative services and faster outcomes, AI has given consulting firms a competitive edge, reshaping the industry into a more agile, precise, and impactful domain for clients.



How are we using AI and ML?

At Bigline Consulting, we leverage cutting-edge AI technology to redefine the consulting landscape, delivering high-impact solutions at a lower cost. By automating repetitive processes, such as data collection and analysis, we reduce operational overhead while ensuring speed and accuracy. Our AI-driven insights identify inefficiencies and cost-saving opportunities with precision, enabling us to offer strategic recommendations faster than traditional methods. Through predictive analytics and scenario modeling, we help clients anticipate challenges and optimize resources effectively. This tech-enabled approach allows us to provide premium consulting services without premium costs, ensuring value, efficiency, and innovation for businesses of all sizes.

Passing on the Benefits

At Bigline Consulting, our low-cost consulting model directly benefits clients by delivering high-quality services at a fraction of traditional fees, while enabling us to allocate more resources toward effective implementation. By leveraging AI and automation, we reduce operational costs, which are passed on as savings to clients. This approach ensures clients receive premium expertise without the high price tag.

Additionally, the reduced costs allow us to focus extensively on implementation, ensuring that strategies translate into tangible outcomes. By dedicating more time and effort to execution, we help clients achieve lasting improvements, turning recommendations into measurable, sustainable results.



Low-Cost Consulting

Our low-cost consulting model offers clients high-quality expertise and actionable insights at a fraction of traditional costs, maximizing value and return on investment. It enables businesses of all sizes, including smaller organizations, to access seasoned professionals and innovative solutions without budget constraints. Clients can optimize resources by reallocating savings from reduced consulting fees to other strategic priorities, enhancing overall efficiency and growth. Additionally, the affordability of low-cost consulting makes it scalable, allowing businesses to engage more frequently for ongoing improvement and sustained success. This approach ensures clients achieve impactful results while maintaining financial flexibility and operational efficiency.