

Office For Lease

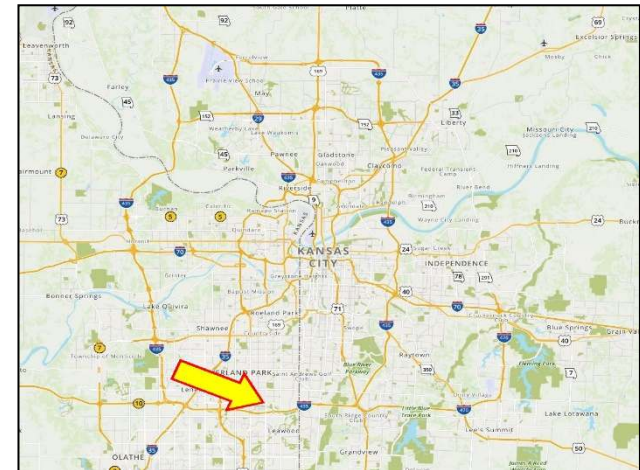
BYRAM
REAL ESTATE

5350 W. 94th Terrace, Prairie Village, KS 66207



OVERVIEW

- From 655 to 1,690 Square Feet Available
- Covered Parking Available
- On-Site Management
- Good Parking Ratio
- Walk to many Restaurants and Shops



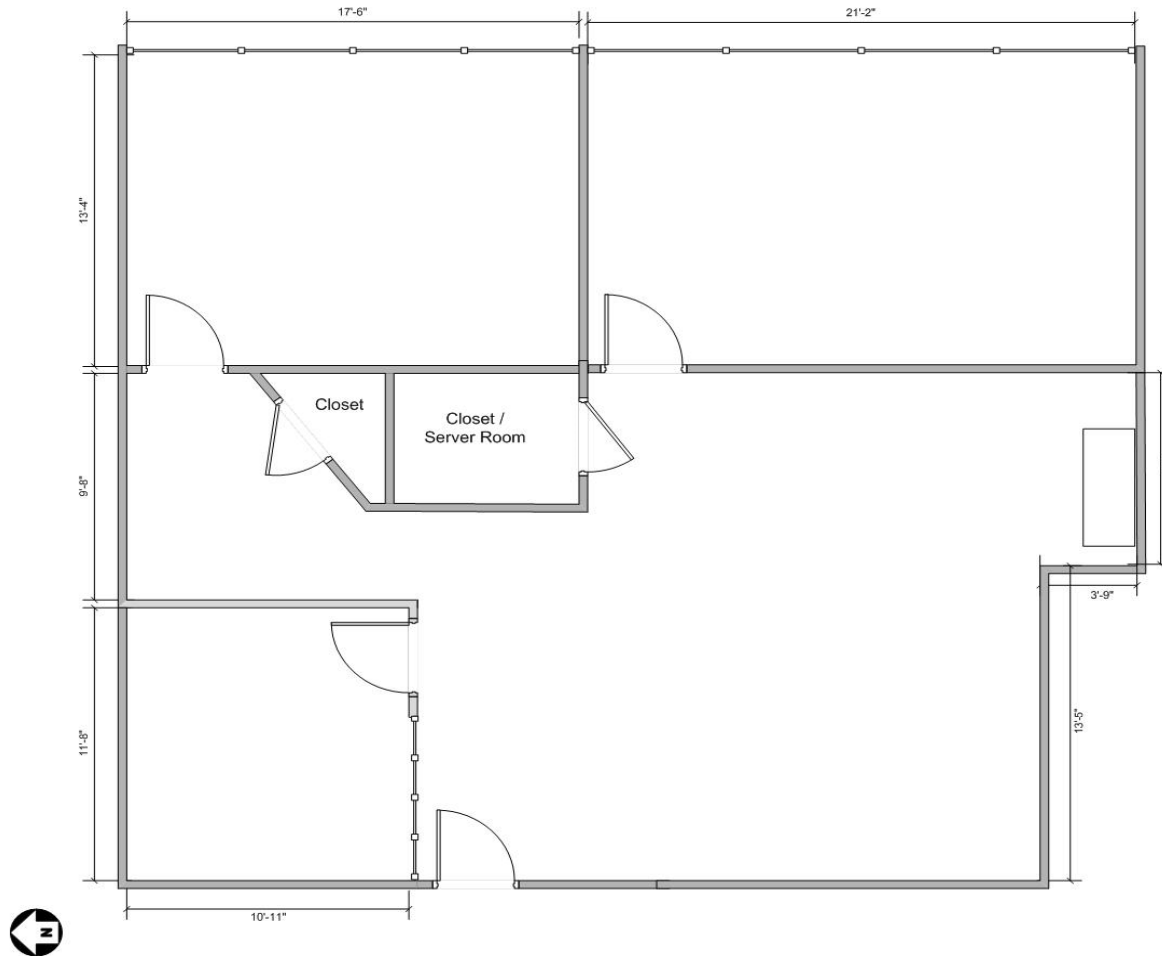
All Information furnished regarding property for sale or lease is from sources believed to be reliable, but we cannot guarantee the accuracy thereof, and same is submitted subject to errors, omissions, change of price, or other conditions, or withdrawal without notice.

CONTACT:
John Byram
(913) 722-5229

BYRAM REAL ESTATE
5350 W. 94th Terr., Suite 201, Prairie Village, KS 66207
Phone (913) 722-5229 / Fax (913) 722-0909
Email ~ John@ByramRE.com / www.ByramRE.com



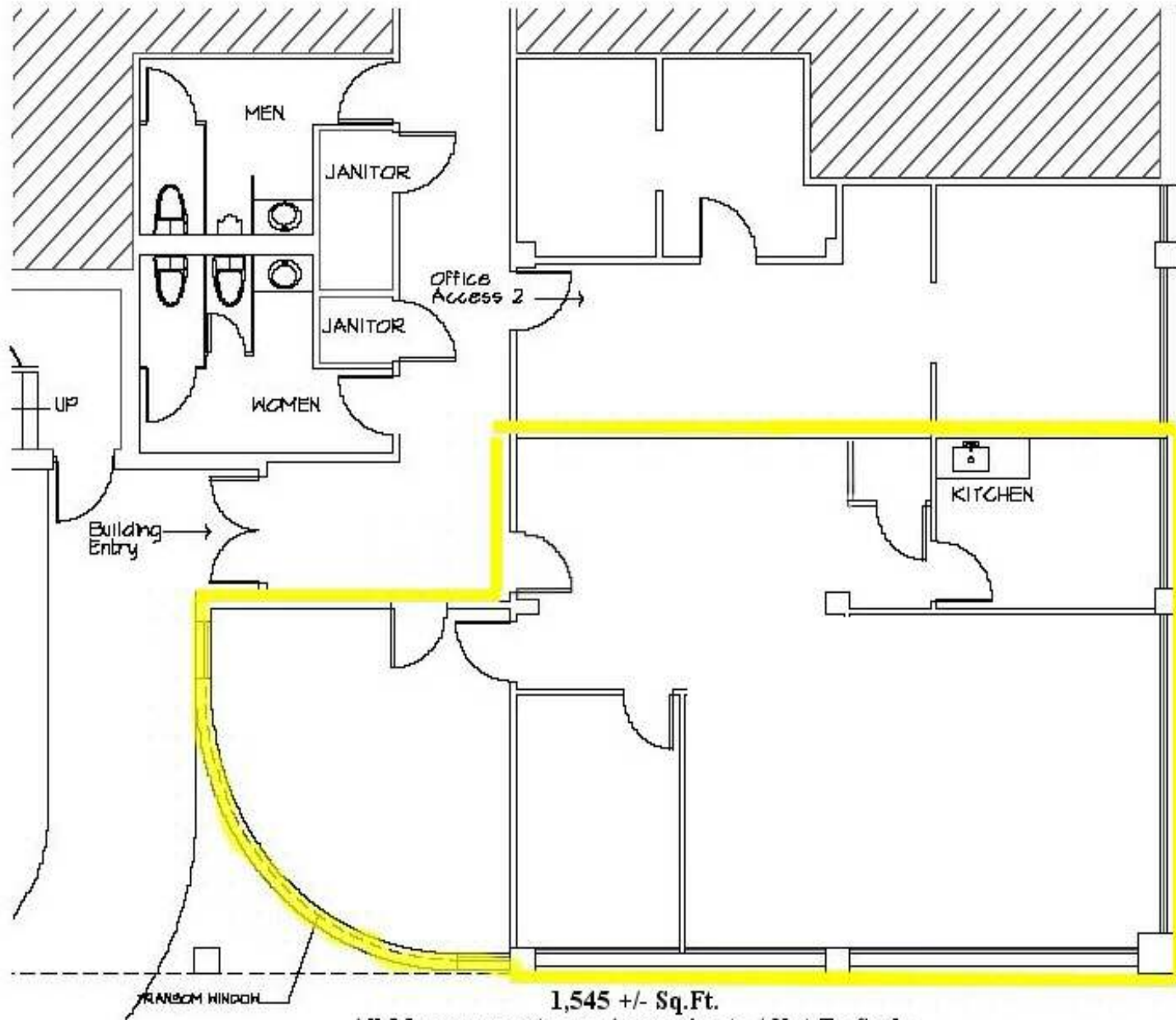
5350 W. 94th Terrace, Suite
204 Prairie Village, KS



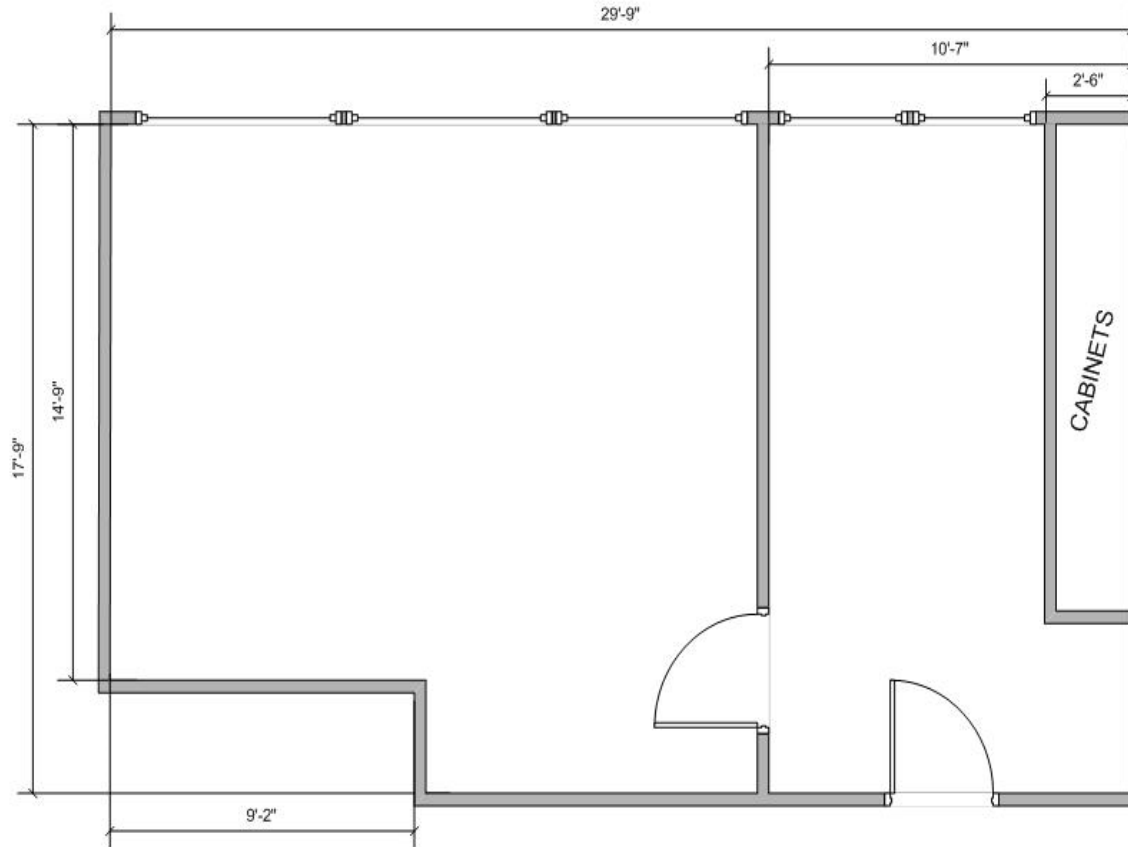
1,690 +/- Square Feet

ALL MEASUREMENTS ARE APPROXIMATE
NOT TO SCALE

5350 W. 94th Terrace, Suite 100, Prairie Village, KS 66207



All Measurements are Approximate / Not To Scale



5350 W. 94th Terrace, Prairie Village, KS
Suite 200
+/- 655 Sq.Ft.
All Measurements Are Approximate
Not To Scale