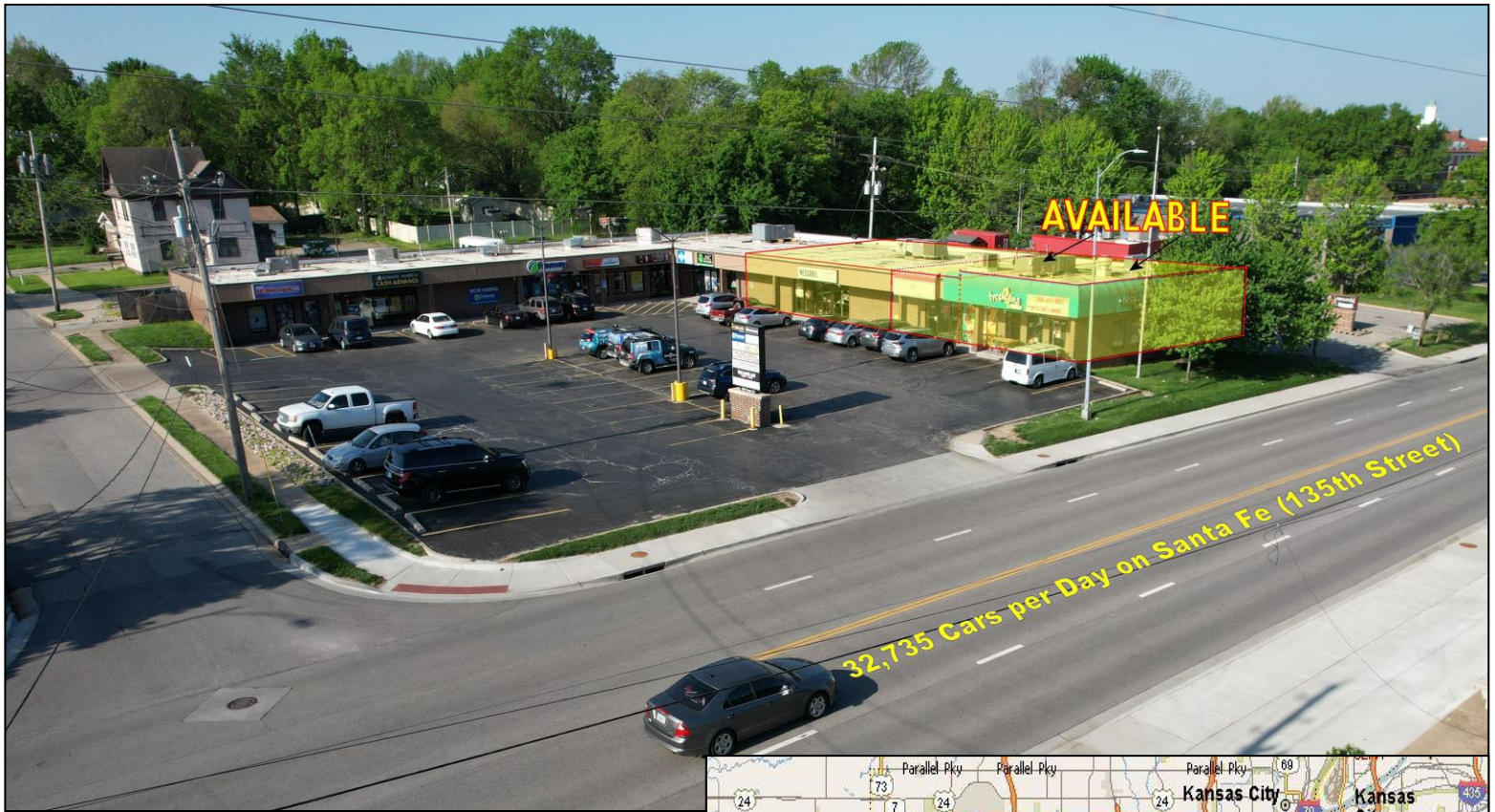


Space for Lease



539 E. Santa Fe, Olathe, KS



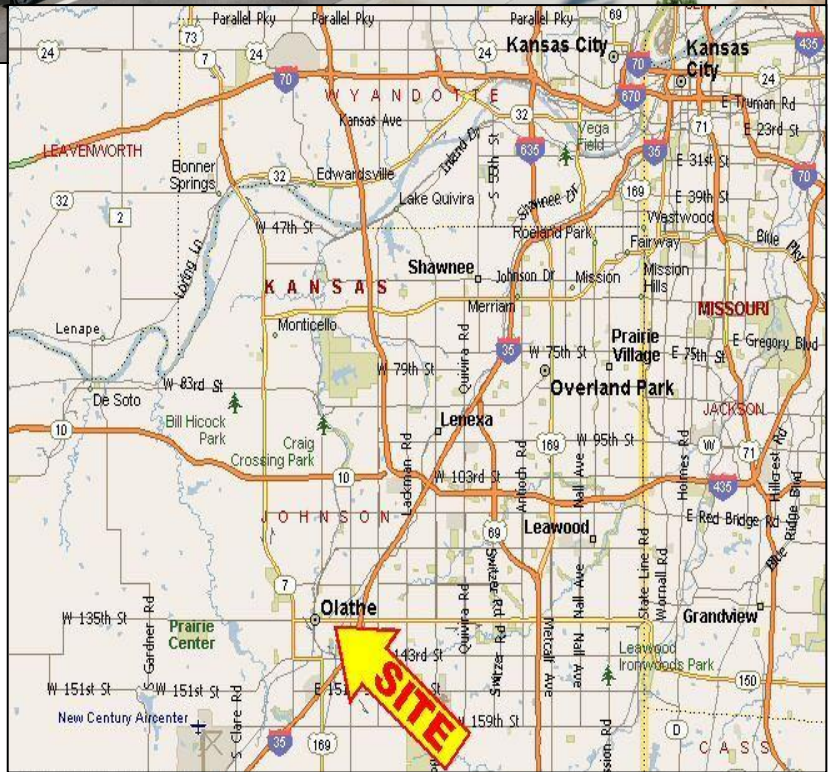
- 1,200-5,450 SF Available
- Building Renovation Coming Soon!!
- End Cap Space
- Former Restaurant Space
- Great Visibility & Access to Santa Fe
- Abundant Parking
- Building and Monument Signage

DEMOGRAPHICS

Radius	1 Mile	3 Miles	5 Miles
Population*	12,905	92,959	171,686
Avg. HH Income	\$71,952	\$97,445	\$120,402

*2019 Estimate

All Information furnished regarding property for sale or lease is from sources believed to be reliable, but we cannot guarantee the accuracy thereof, and same is submitted subject to errors, change of price, or other conditions, or withdrawal without notice.

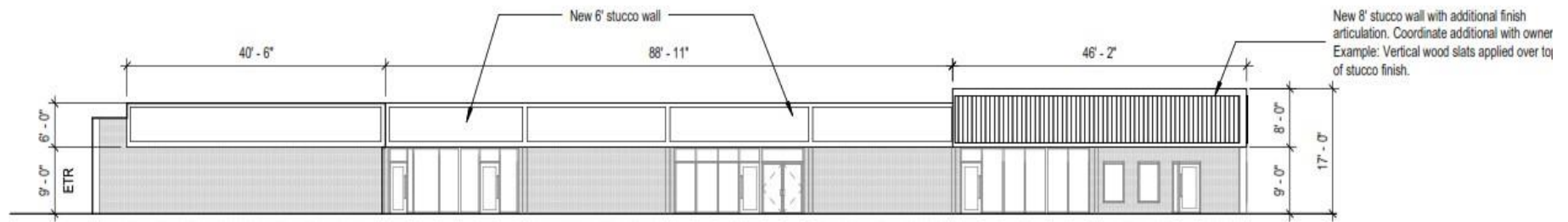


CONTACT:
John Byram
(913) 722-5229

BYRAM REAL ESTATE
 5350 W. 94th Terr., Suite 201, Prairie Village, KS 66207
 Phone (913) 722-5229 / Fax (913) 722-0909
 Email ~ John@ByramRE.com / www.ByramRE.com

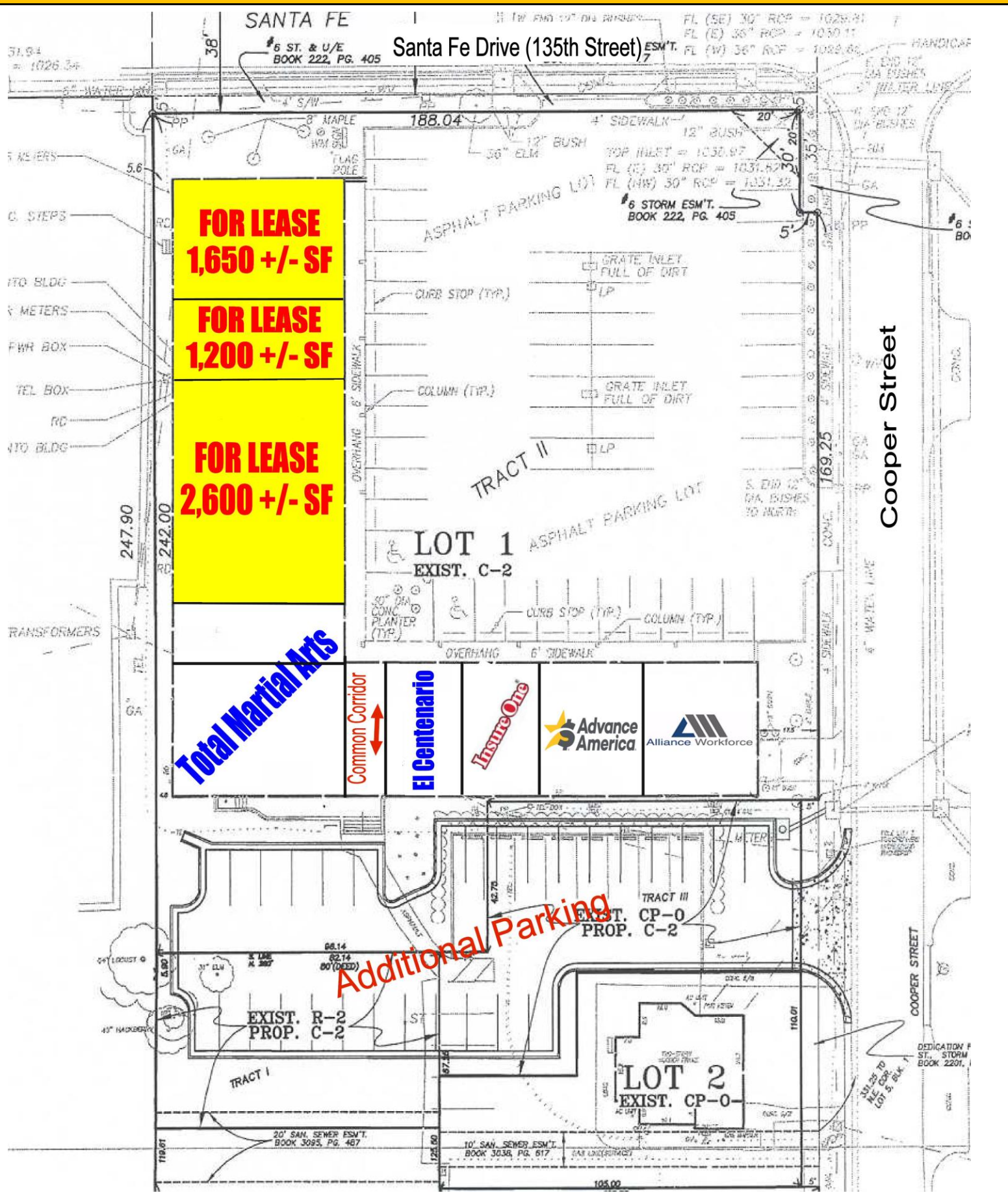


PLANNED RENOVATION RENDERING – 539 E. Santa Fe, Olathe, KS



G1
1/16" = 1'-0"

North Elevation



**FOR LEASE
1,650 +/- SF**

**FOR LEASE
1,200 +/- SF**

**FOR LEASE
2,600 +/- SF**

Total Martial Arts

Common Corridor

El Centenario

InsureOne

Advance America

Alliance Workforce

Additional Parking

Cooper Street

Santa Fe Drive (135th Street)

**LOT 1
EXIST. C-2**

**LOT 2
EXIST. CP-0**

DEDICATION F
ST. STORM
BOOK 2201,



Executive Summary Report

539 E Santa Fe St, Olathe, Kansas, 66061
Rings: 1, 3, 5 mile radii

Prepared by Esri
Latitude: 38.88356
Longitude: -94.80968

	1 mile	3 miles	5 miles
Population			
2000 Population	12,281	72,818	105,055
2010 Population	11,927	83,346	144,217
2016 Population	12,451	88,744	161,197
2021 Population	12,905	92,959	171,686
2000-2010 Annual Rate	-0.29%	1.36%	3.22%
2010-2016 Annual Rate	0.52%	0.76%	1.36%
2016-2021 Annual Rate	0.72%	0.93%	1.27%
2016 Male Population	50.3%	49.5%	49.4%
2016 Female Population	49.7%	50.5%	50.6%
2016 Median Age	33.9	34.2	34.6
Households			
2000 Households	4,843	25,564	36,498
2010 Households	4,525	29,921	51,356
2016 Total Households	4,677	31,673	56,696
2021 Total Households	4,827	33,089	60,121
2000-2010 Annual Rate	-0.68%	1.59%	3.47%
2010-2016 Annual Rate	0.40%	0.69%	1.21%
2016-2021 Annual Rate	0.63%	0.88%	1.18%
2016 Average Household Size	2.65	2.76	2.82
Median Household Income			
2016 Median Household Income	\$50,977	\$72,940	\$87,054
2021 Median Household Income	\$55,145	\$79,729	\$97,462
2016-2021 Annual Rate	1.58%	1.80%	2.28%
Average Household Income			
2016 Average Household Income	\$63,118	\$86,726	\$107,157
2021 Average Household Income	\$71,952	\$97,445	\$120,402
2016-2021 Annual Rate	2.65%	2.36%	2.36%
Housing			
2000 Total Housing Units	5,023	26,280	37,760
2000 Owner Occupied Housing Units	2,596	17,290	26,129
2000 Renter Occupied Housing Units	2,246	8,274	10,368
2000 Vacant Housing Units	181	716	1,263
2010 Total Housing Units	4,908	31,608	54,021
2010 Owner Occupied Housing Units	2,427	20,386	36,769
2010 Renter Occupied Housing Units	2,098	9,535	14,587
2010 Vacant Housing Units	383	1,687	2,665
2016 Total Housing Units	5,081	33,468	59,324
2016 Owner Occupied Housing Units	2,390	21,167	39,085
2016 Renter Occupied Housing Units	2,287	10,506	17,611
2016 Vacant Housing Units	404	1,795	2,628
2021 Total Housing Units	5,248	34,985	62,845
2021 Owner Occupied Housing Units	2,558	22,592	42,119
2021 Renter Occupied Housing Units	2,268	10,497	18,002
2021 Vacant Housing Units	421	1,896	2,724
Data for all businesses in area			
Total Businesses:	649	2,930	4,926
Total Employees:	9,259	46,670	80,734
Total Residential Population:	12,451	88,744	161,197
Employee/Residential Population Ratio:	0.740:1	0.530:1	0.500:1

Data Note: Income is expressed in current dollars

Source: U.S. Census Bureau, Census 2010 Summary File 1. Esri forecasts for 2016 and 2021. Esri converted Census 2000 data into 2010 geography.