

# OFFICE SPACE FOR LEASE



8800 Marshall Drive, Lenexa, KS 66215



## OVERVIEW

- Up to 2,000 +/- SF Available
- Aggressive Rate
- Convenient to Interstate and Many Restaurants & Shops
- Private Restrooms
- Signage Possibilities

## DEMOGRAPHICS

Radius	1 Mile	3 Miles	5 Miles
Population*	7,537	101,152	210,759
Avg. HH Income	\$57,197	\$73,076	\$78,563

\*2010 & 2013 Estimates

All Information furnished regarding property for sale or lease is from sources believed to be reliable, but we cannot guarantee the accuracy thereof, and same is submitted subject to errors, change of price, or other conditions, or withdrawal without notice.



CONTACT:

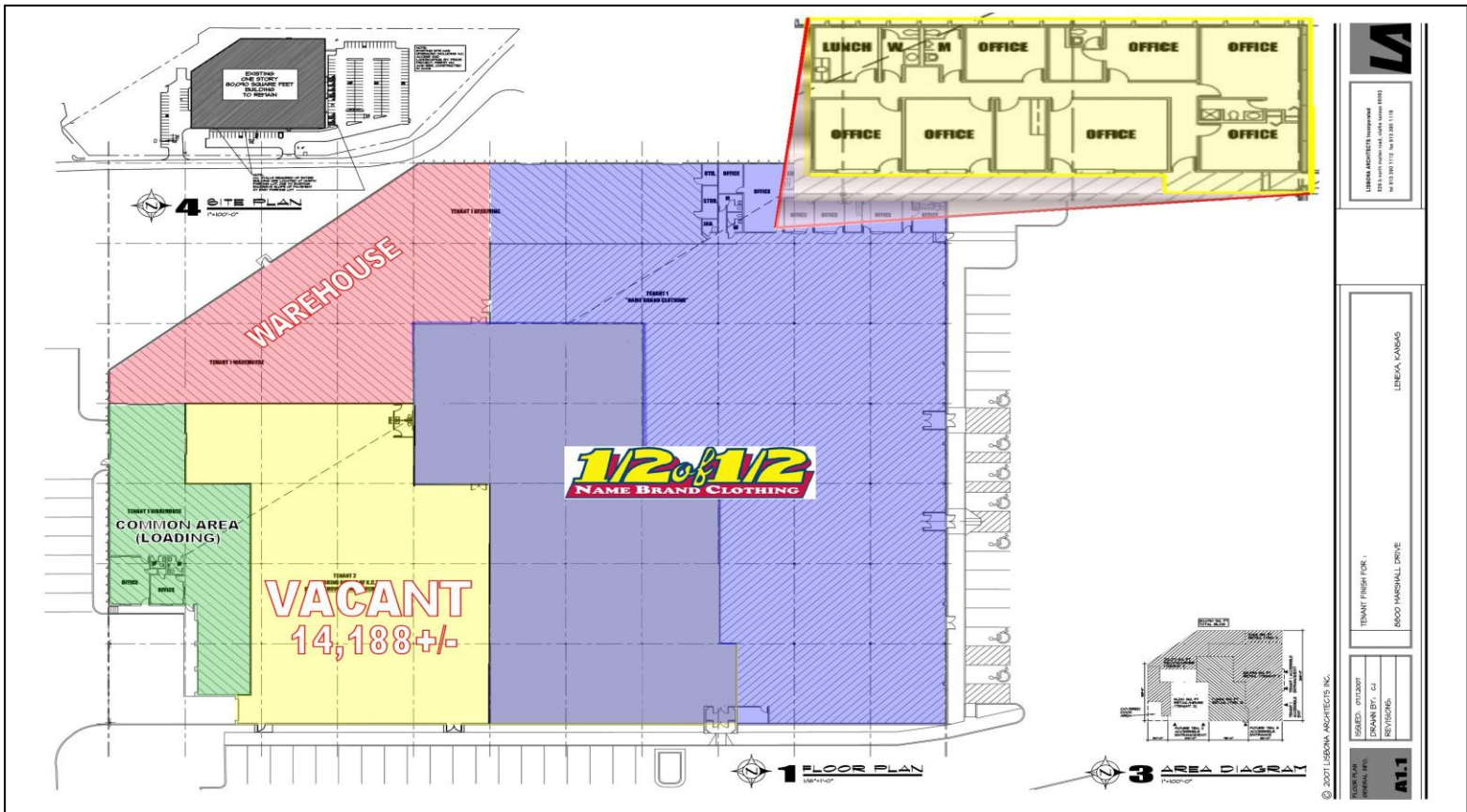
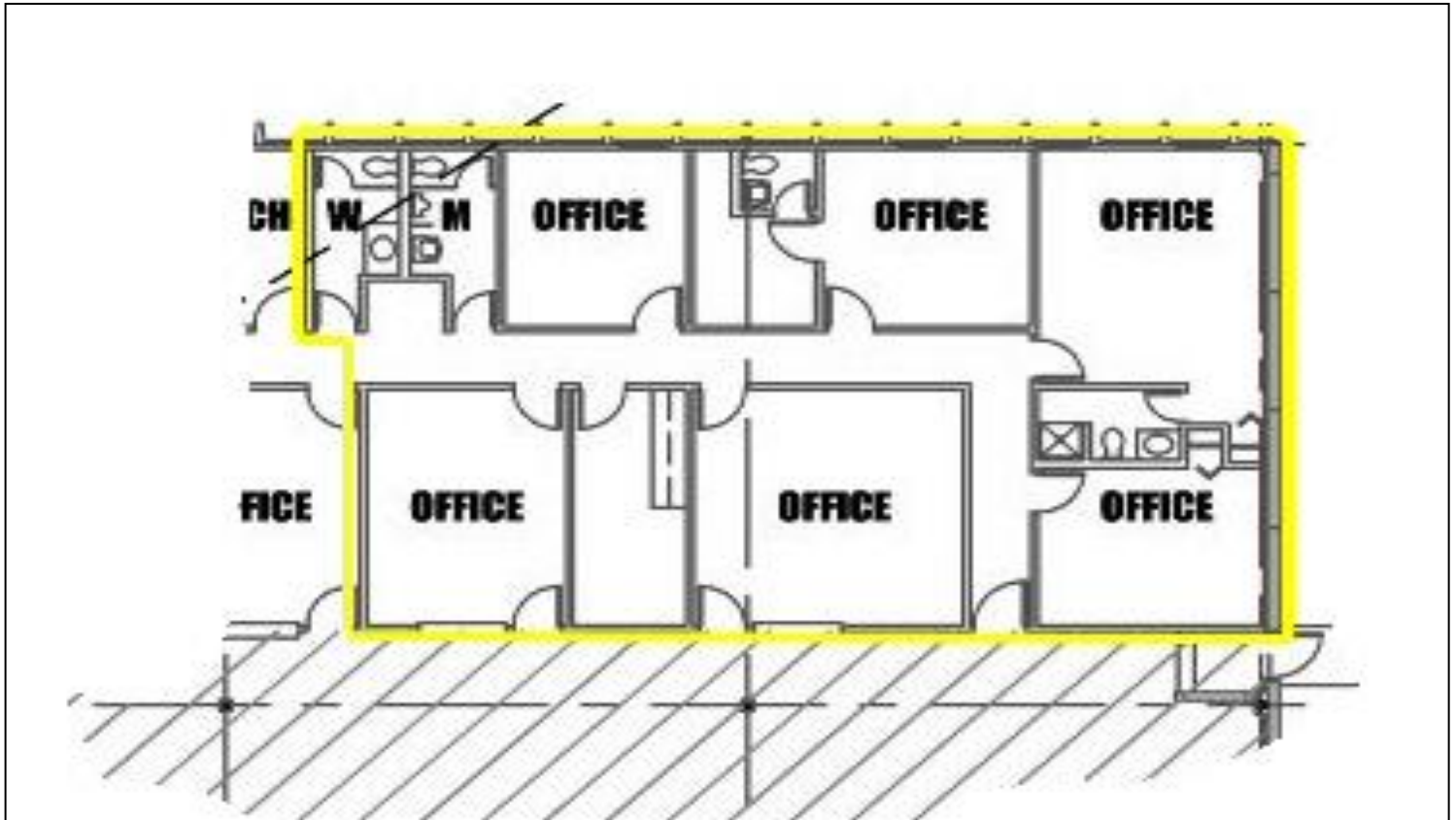
**John Byram**  
**(913) 722-5229**

**BYRAM REAL ESTATE**

5350 W. 94<sup>th</sup> Terr., Suite 201, Prairie Village, KS 66207

Phone (913) 722-5229 / Fax (913) 722-0909

Email ~ [John@ByramRE.com](mailto:John@ByramRE.com) / [www.ByramRE.com](http://www.ByramRE.com)



**BYRAM**  
LENEXA ARCHITECTS INCORPORATED  
1111 N. W. 11th Street, Lenexa, KS 66215  
TEL: 781.333.1111 FAX: 781.333.1112

LENEXA, KANSAS

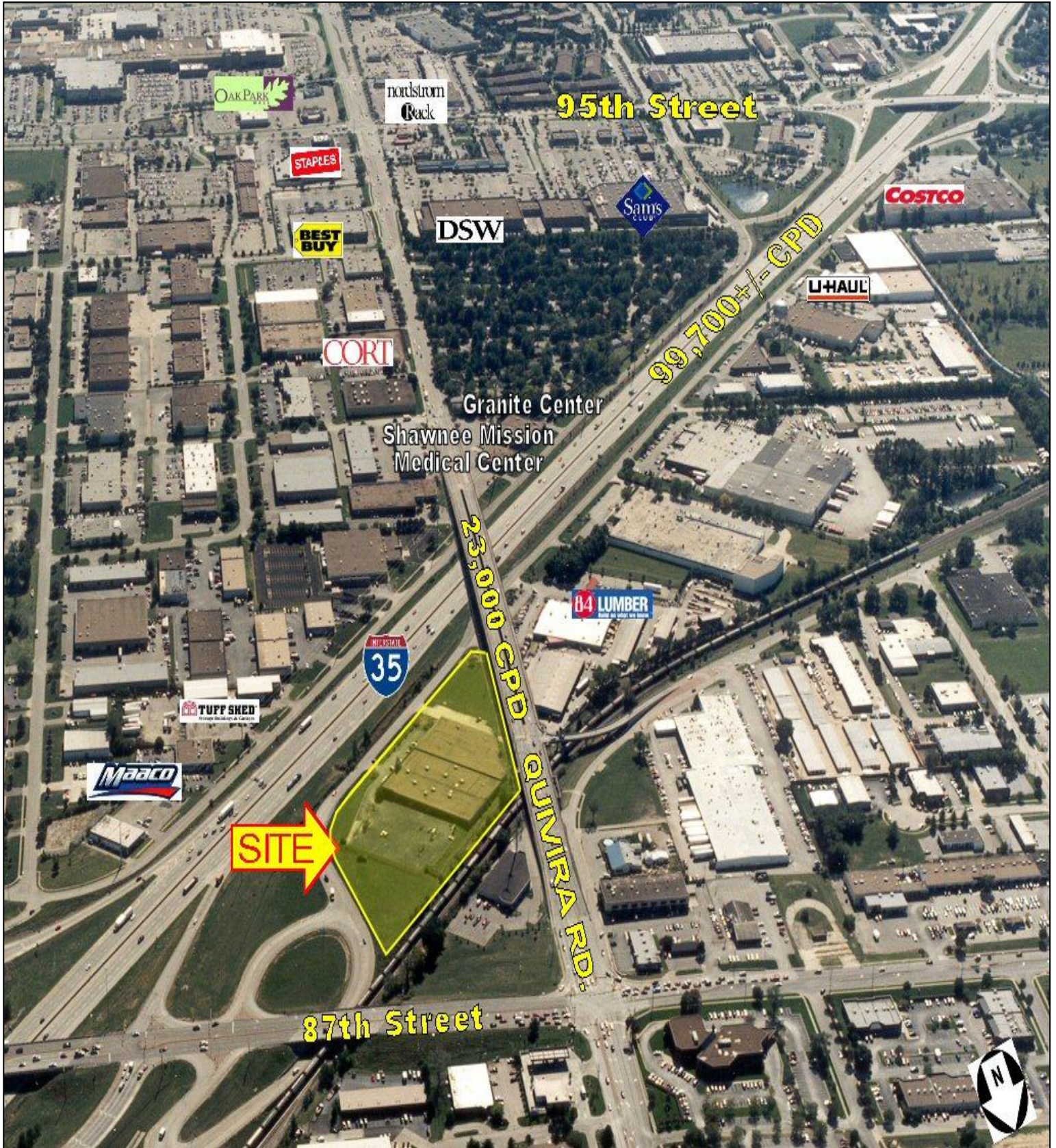
8800 MARSHALL DRIVE

ISSUED: 07/2007  
DRAWN BY: CJ  
REVISIONS:

AT1

© 2007 LENEXA ARCHITECTS INC.









## Executive Summary

8800 Marshall Drive, Lenexa, KS

	1 mile	3 miles	5 miles
<b>Population</b>			
2000 Population	7,499	102,106	206,399
2010 Population	7,537	101,152	210,759
2013 Population	7,578	101,304	212,705
2018 Population	7,819	103,887	220,155
2000-2010 Annual Rate	0.05%	-0.09%	0.21%
2010-2013 Annual Rate	0.17%	0.05%	0.28%
2013-2018 Annual Rate	0.63%	0.50%	0.69%
2013 Male Population	47.5%	48.3%	48.2%
2013 Female Population	52.5%	51.7%	51.8%
2013 Median Age	33.4	37.3	38.3
<b>Race and Ethnicity</b>			
2013 White Alone	75.1%	80.7%	83.0%
2013 Black Alone	10.6%	7.6%	6.3%
2013 American Indian/Alaska Native Alone	0.6%	0.4%	0.4%
2013 Asian Alone	2.8%	3.3%	3.8%
2013 Pacific Islander Alone	0.1%	0.1%	0.1%
2013 Other Race	6.3%	4.7%	3.5%
2013 Two or More Races	4.6%	3.2%	2.9%
2013 Hispanic Origin (Any Race)	14.1%	11.7%	9.4%
<b>Median Household Income</b>			
2013 Median Household Income	\$41,917	\$53,948	\$57,679
2018 Median Household Income	\$52,734	\$66,102	\$72,729
2013-2018 Annual Rate	4.70%	4.15%	4.75%
<b>Average Household Income</b>			
2013 Average Household Income	\$57,197	\$73,076	\$78,563
2018 Average Household Income	\$67,624	\$85,028	\$91,890
2013-2018 Annual Rate	3.41%	3.08%	3.18%
<b>Per Capita Income</b>			
2013 Per Capita Income	\$25,527	\$31,748	\$34,506
2018 Per Capita Income	\$30,248	\$37,068	\$40,506
2013-2018 Annual Rate	3.45%	3.15%	3.26%
<b>Housing</b>			
2000 Total Housing Units	3,408	44,543	89,538
2000 Owner Occupied Housing Units	1,540	25,867	55,880
2000 Owner Occupied Housing Units	1,750	16,830	30,113
2000 Vacant Housing Units	118	1,846	3,545
2010 Total Housing Units	3,517	46,544	97,987
2010 Owner Occupied Housing Units	1,489	25,584	56,490
2010 Renter Occupied Housing Units	1,836	18,009	35,068
2010 Vacant Housing Units	192	2,951	6,429
2013 Total Housing Units	3,539	47,066	99,102
2013 Owner Occupied Housing Units	1,398	24,630	54,855
2013 Renter Occupied Housing Units	1,964	19,253	38,065
2013 Vacant Housing Units	177	3,183	6,183
2018 Total Housing Units	3,677	48,601	102,831
2018 Owner Occupied Housing Units	1,458	25,567	57,478
2018 Renter Occupied Housing Units	2,027	19,620	39,121
2018 Vacant Housing Units	192	3,414	6,232

**Data Note:** Income is expressed in current dollars

**Source:** U.S. Census Bureau, Census 2010 Summary File 1. Esri forecasts for 2013 and 2018. Esri converted Census 2000 data into 2010 geography.