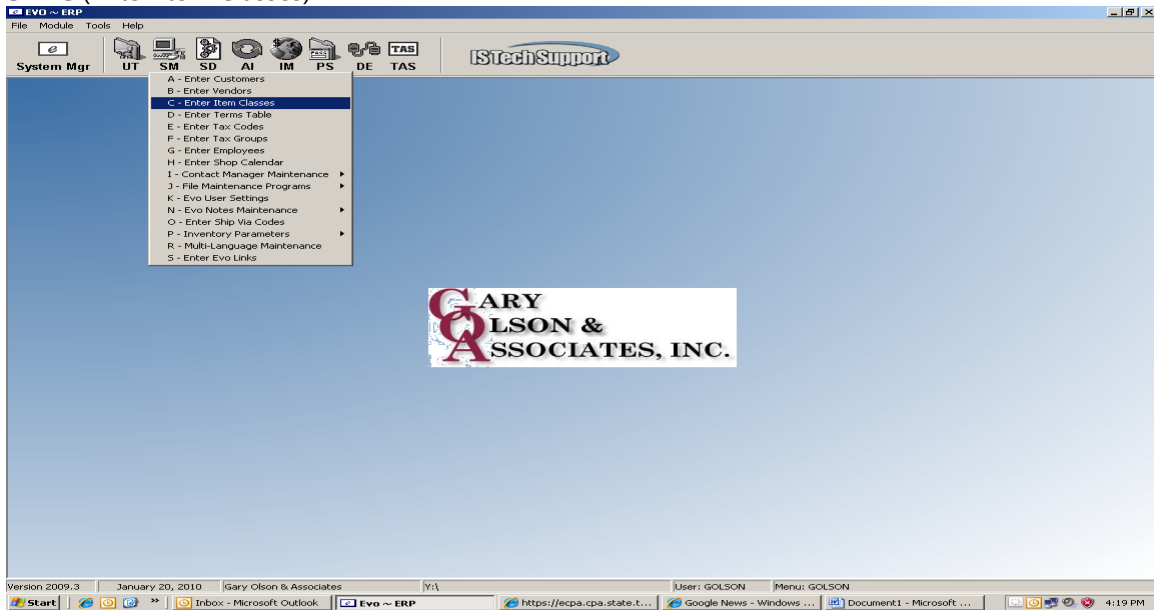


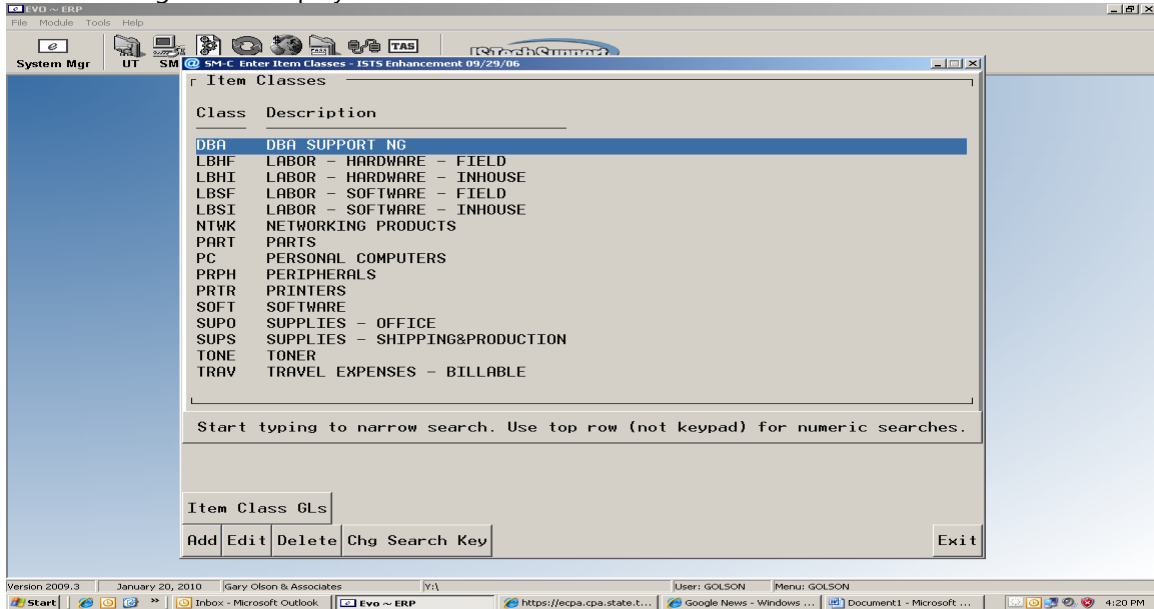
Enter Item Classes (Product Codes)

System Mgr

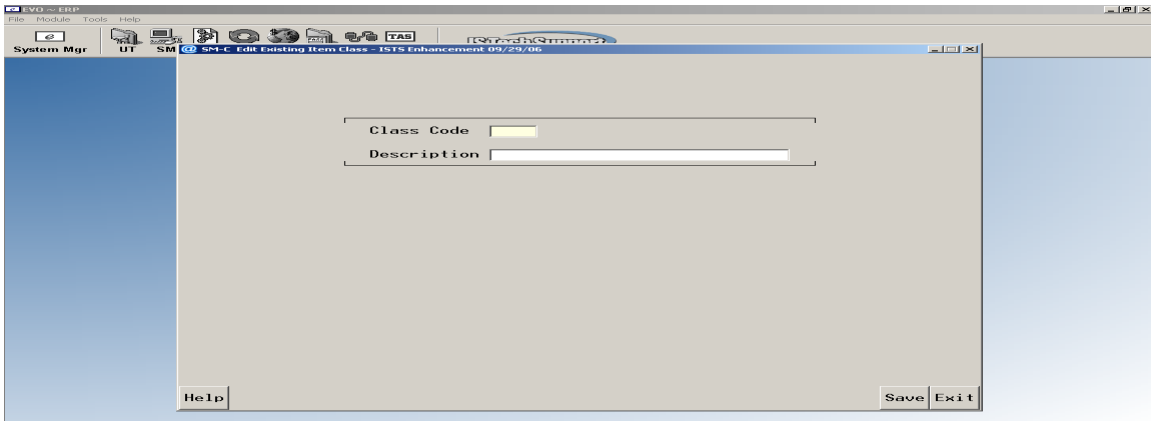
SM-C (Enter Item Classes)



The Following Screen displays



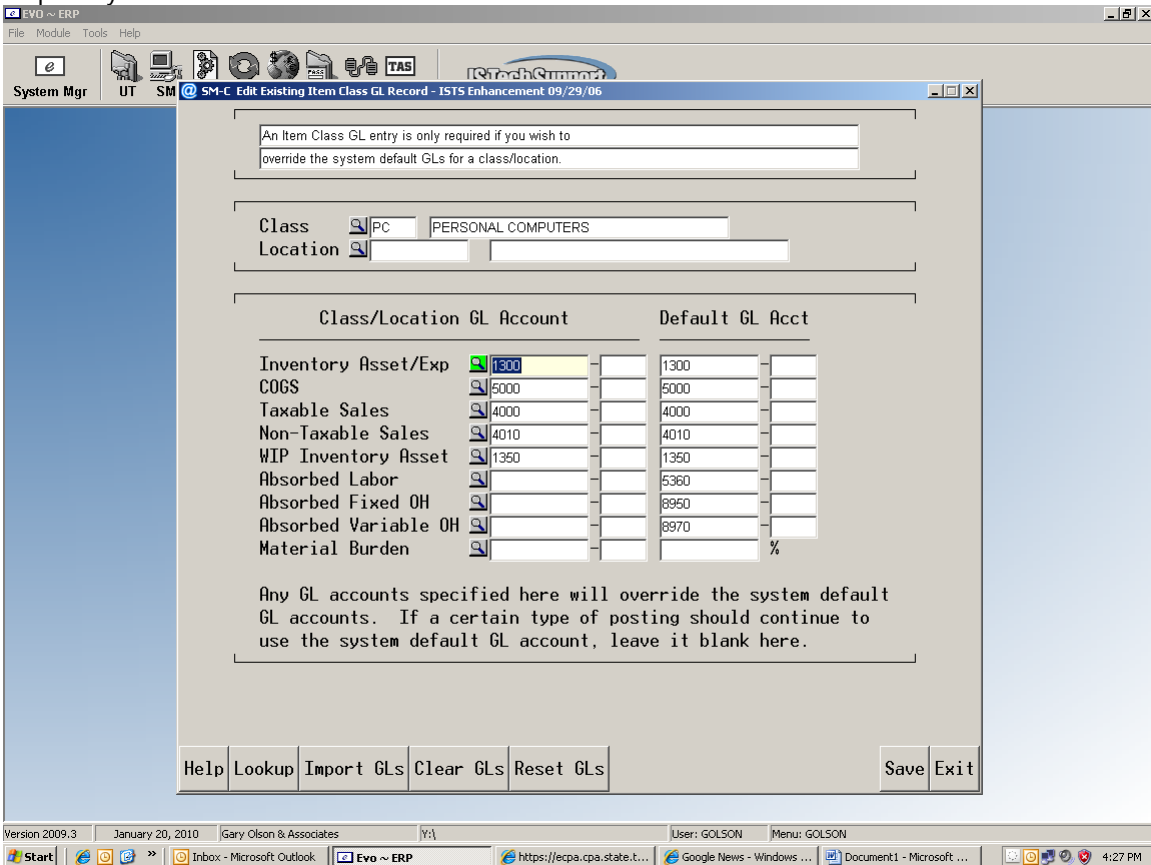
Click **Add**



Enter in **Class Code** (Product Code) and **Description**
Then Click **Save**

The Screen will return to the Add screen

At point you need to click the **Item Class GL's**



You only need to enter an GL Accounts if want to override any of the default GL account