

Anti-Stat5b - Rabbit antiserum

Cat# AX554 Price: 0.1 ml - \$289

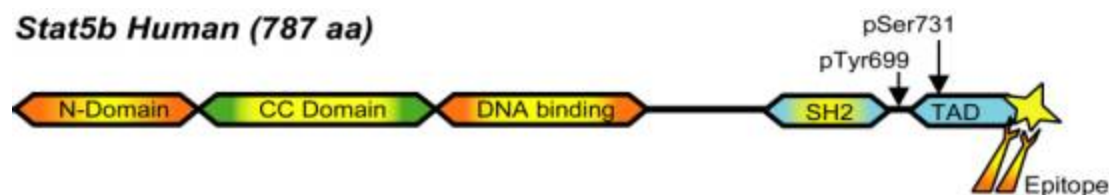
[Buy this product](#)

Applications:

- * **Western Blot:** (1:3,000 dilution, 90 min incubation)
- * **Immunoprecipitation:** (3-5 μ l per lysate from 10^6 - 10^7 cells)
- * **Supershift analysis:** (1 μ l serum in 20-30 μ l reaction volume)
- * **Immunohistochemistry:** 1:800-1:1,600 dilution of serum

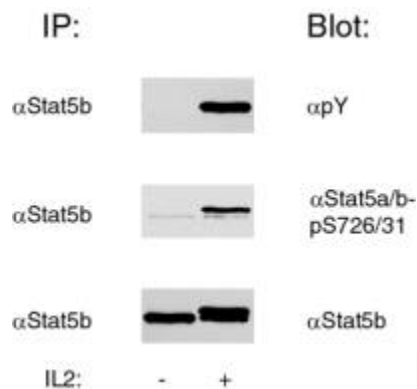
Brief description of antigen: Stat5b is a transcription factor activated by peptide hormones, growth factors and cytokines, including growth hormone, prolactin, EPO, TPO, CM-CSF, interleukins, and EGF. Stat5b is critically involved in a variety of physiological functions, including reproduction, lactation, immune function and somatic growth.

Stat5b Human (787 aa)

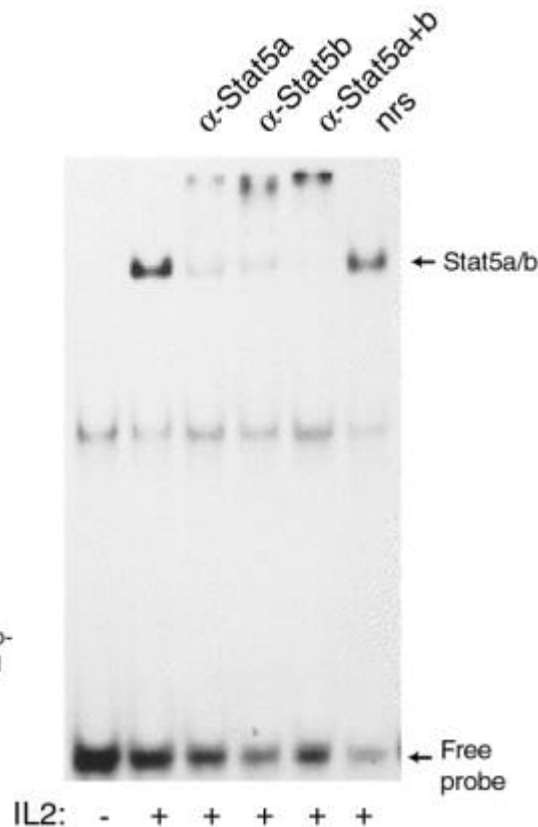


Immunogen	MDSQWIPHAQS	Immunoreactivity
Human Stat5b	⁷⁷⁷ MDSQWIPHAQS ⁷⁸⁷	Verified +
Mouse Stat5b	MDSQWIPHAQS	Verified +
Rat Stat5b	MDSQWIPHAQS	Verified +
Cattle Stat5b	MDSQWIPHAQS	Expected +
Chicken Stat5b	MDSQWIPHAQS	Expected +

Immunoprecipitation and blotting:



EMSA:



Note: Both Stat5a-homo- and Stat5a/b heterodimers will be supershifted in EMSA

References:

1. Kirken RA, Malabarba MG, Xu J, Liu X, Farrar WL, Hennighausen L, Lerner AC, Grimley PM, Rui H. Prolactin stimulates serine/tyrosine phosphorylation and formation of heterocomplexes of multiple Stat5 isoforms in Nb2 lymphocytes. *J. Biol. Chem.* 272, 14098-15003, 1997.
2. Kirken RA, Malabarba MG, Xu J, Erwin RE, DaSilva L, Liu X, Hennighausen L, Rui H, Farrar WL. Two discrete regions of interleukin-2 (IL2) receptor-β independently mediate IL2 activation of a PD98059/rapamycin/wortmannin-insensitive Stat5a/b serine kinase. *J. Biol. Chem.*, 272, 15459-15465, 1997.
3. Rui H, Xu J, Dong F, Mehta S, Fang H, Williams J, Grimley PM. Activation of the Jak2-Stat5 signaling pathway in Nb2 lymphoma cells by an anti-apoptotic agent, aurintricarboxylic acid. *J. Biol. Chem.*, 273, 28-32, 1998.
4. Yamashita H, Xu J, Erwin RA, Farrar WL, Kirken RA, Rui H. Differential control of the phosphorylation state of proline-juxtaposed serine residues S725 of Stat5a and S730 of Stat5b in prolactin-sensitive cells. *J. Biol.*

Chem., 273; 30218-30224, 1998.

5. Yamashita H, Xu J, Erwin RA, Larner AC, Rui H. A lymphoma growth inhibitor blocks some but not all prolactin-stimulated signaling pathways. J. Biol. Chem. 274; 14699-14705, 1999.

6. Grimley PM, Dong F, Rui H. Stat5a and Stat5b: Fraternal Twins of Signal Transduction and Transcriptional Activation. Cytokine & Growth Factor Reviews, 10, 131-157, 1999.

Key Benefits

🟡 Detects Stat5b but not Stat5a

🟡 Useful for immunoprecipitation, immunoblotting, and supershift analysis

Pricing

Description	SKU #	Price
0.1 ml	AX554	350

[Buy this product](#)