

## AntiphosphoStat5a/b(Ser726/31)

### Rabbit antiserum

[Buy this product](#)

Cat# AX552 Price: 0.1 ml - \$289

### Applications:

\* **Western Blot:** (1:5,000-1:10,000 dilution, 16-20 h incubation for best results)

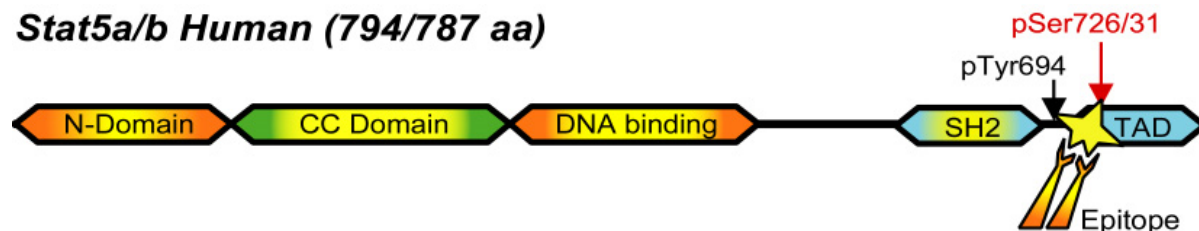
Immunoprecipitation: Not Tested

\* **Supershift analysis:** (1 µl serum in 20-30 µl reaction volume)

Immunohistochemistry: Not Tested

**Brief description of antigen:** Stat5a and Stat5b are two highly homologous transcription factors activated by peptide hormones, growth factors and cytokines, including growth hormone, prolactin, EPO, TPO, CM-CSF, interleukins, and EGF. Stat5a is critically involved in a variety of physiological functions, including reproduction, lactation, immune function and somatic growth.

### Stat5a/b Human (794/787 aa)



### Immunogen: Conjugated oligopeptide

		DQAP [pS] PAVC	Immunoreactivity
human	Stat5a	<sup>721</sup> DQAP [pS] PAVC <sup>729</sup>	Verified +
mouse	Stat5a	DQAP [pS] PVVC	Verified +
rat	Stat5a	DQAP [pS] PVVC	Verified +
pig	Stat5a	DQAP [pS] PAVC	Expected +
cattle	Stat5a	DQAP [pS] PAVC	Expected +
sheep	Stat5a	DQAP [pS] PAVC	Expected +

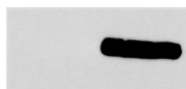
human	Stat5b	<sup>726</sup> DQAP [pS] PAVC <sup>734</sup>	Verified +
mouse	Stat5b	DQAP [pS] PVVC	Verified +
rat	Stat5b	DQAP [pS] PVVC	Verified +
cattle	Stat5b	DQAP [pS] PAVC	Expected +
chicken	Stat5b	DQAP [pS] PAVC	Expected +

## Western Blotting:

IP:

Blot:

$\alpha$ Stat5a



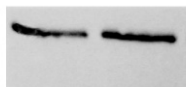
$\alpha$ pY

$\alpha$ Stat5a



$\alpha$ Stat5a/b-  
pS726/31

$\alpha$ Stat5a



$\alpha$ Stat5a

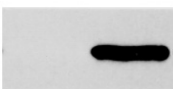
IL2:

- +

IP:

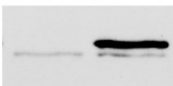
Blot:

$\alpha$ Stat5b



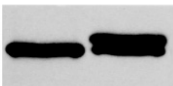
$\alpha$ pY

$\alpha$ Stat5b



$\alpha$ Stat5a/b-  
pS726/31

$\alpha$ Stat5b



$\alpha$ Stat5b

IL2:

- +

## References:

1. Kirken RA, Malabarba MG, Xu J, Liu X, Farrar WL, Hennighausen L, Larner AC, Grimley PM, Rui H. Prolactin stimulates serine/tyrosine phosphorylation and formation of heterocomplexes of multiple Stat5 isoforms in Nb2 lymphocytes. J. Biol. Chem. 272, 14098-15003, 1997.
2. Kirken RA, Malabarba MG, Xu J, Erwin RE, DaSilva L, Liu X, Hennighausen L, Rui H, Farrar WL. Two discrete regions of interleukin-2 (IL2) receptor- $\beta$  independently mediate IL2 activation of a PD98059/rapamycin/wortmannin-insensitive Stat5a/b serine kinase. J. Biol. Chem., 272, 15459-15465, 1997.
3. Rui H, Xu J, Dong F, Mehta S, Fang H, Williams J, Grimley PM. Activation of the Jak2-Stat5 signaling pathway in Nb2 lymphoma cells by an anti-apoptotic agent, aurintricarboxylic acid. J. Biol. Chem, 273, 28-32, 1998.
4. Yamashita H, Xu J, Erwin RA, Farrar WL, Kirken RA, Rui H. Differential control of the phosphorylation state of proline-juxtaposed serine residues S725 of Stat5a and S730 of Stat5b in prolactin-sensitive cells. J. Biol. Chem., 273; 30218-30224, 1998.
5. Grimley PM, Dong F, Rui H. Stat5a and Stat5b: Fraternal Twins of Signal Transduction and Transcriptional Activation. Cytokine & Growth Factor Reviews, 10, 131-157, 1999.

## Key Benefits

- 🔍 Detects Stat5a phosphorylated on residue S726
- 🔍 Detects Stat5b phosphorylated on residue S731
- 🔍 Works in immunoblotting and in supershift analysis

## Pricing

Description	SKU #	Price
0.1 ml	AX552	289

[Buy this product](#)