

DCI2021-00009 CEMEX/FGCU MINGING EXTENSION & MEMORIALIZATION

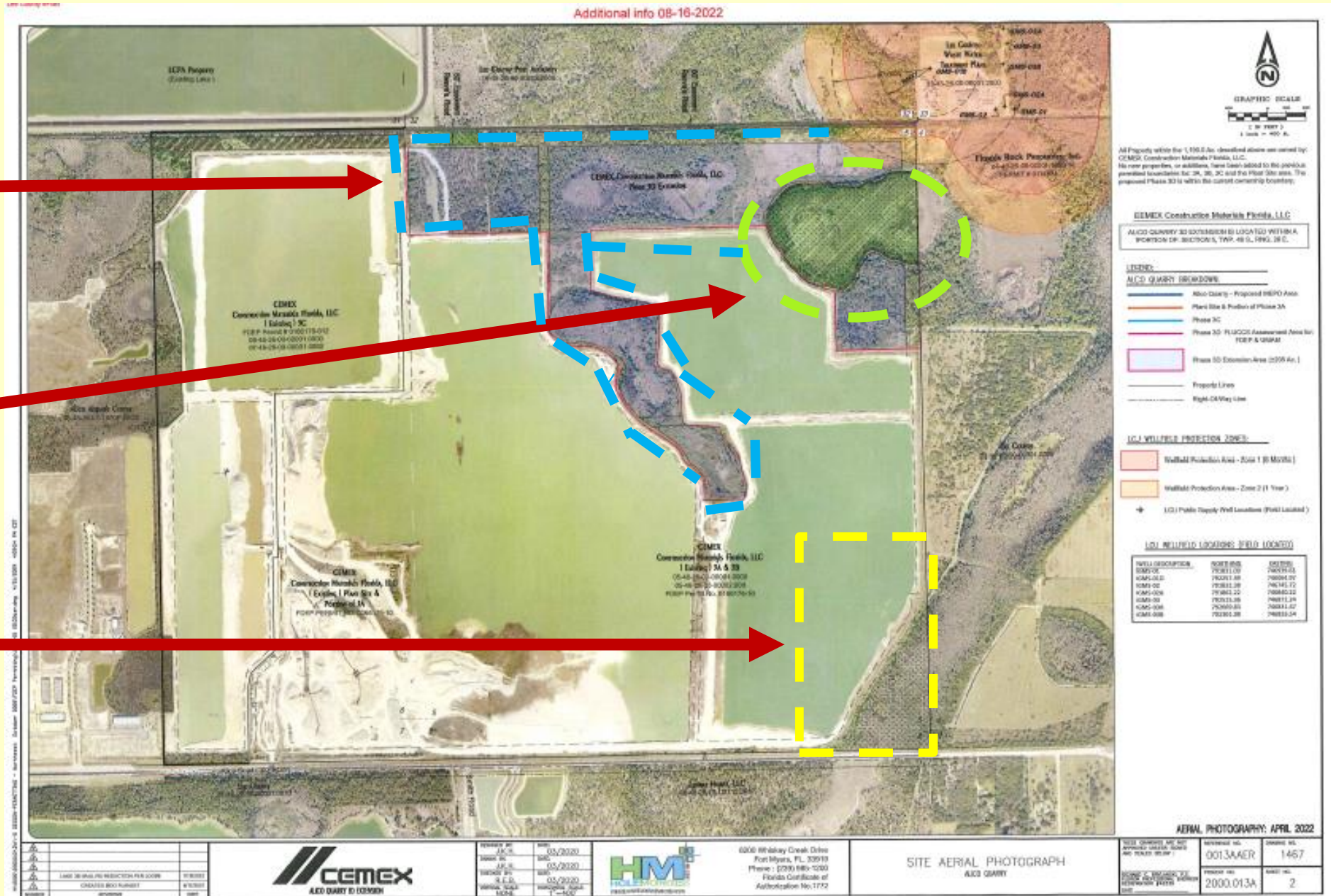
Previously Protected Wetlands & Preserves since 1993 now proposed to be mined



Proposed Indigenous Preserve 28.86 acres



18.5 acre Wild Blue flow-way tract owned by FGCU "non-phase undeveloped lands", Memorialize in Conservation.



Call to Action:

Sample Letter of Opposition RE:CEMEX/FGCU MINE

EMAIL *(suggested, cut & paste as needed)*

Hearing Examiners & Board of County Commissioners Contacts

COLLINS@leegov.com (Hearing Examiner) DIST1@leegov.com (Kevin Ruane) DIST2@leegov.com (Cecil Pendergrass) DIST3@leegov.com (Ray Sandelli) DIST4@leegov.com (Brian Hamman))DIST5@leegov.com (Mike Greenwell)

Dear Lee County Hearing Examiner & Commissioners:

TRAFFIC

I oppose DCI2021-00009 Cemex Alico Quarry Extension 3D. Mine dust from this quarry impacts visibility and borders with the roadway are inadequate. It is dangerous when dump trucks merge from the current acceleration lane, which is too short. The volume of traffic on this roadway is rapidly increasing. Residents of Wild Blue and nearby agricultural communities as well as commuters from Corkscrew East communities use this road. Due to rapidly changing road conditions construction and construction spill over, commuting families, dump trucks and other commercial traffic, Alico Road at this quarry has become increasingly more hazardous.

The mine is incompatible with recent development approvals and increased traffic on this corridor. Wild Blue is directly across the street. I support immediate analysis, including counting of dump trucks, queuing and making the acceleration lane longer, to better protect public safety. As the area is seeing exponential increases in residential traffic, this mine and the outdated practices are due to expire at the right time.

CONSERVATION

I oppose the mining of identified wetlands that have been set aside since 1993 and environmentally monitored, a breach of the public trust. I oppose the southeast corner of phase 3B, the Wild Blue flow-way, remaining as "non-phase undeveloped lands" and support this 18.5-acre parcel being designated as Conservation lands (ie. Indigenous Preserve or other), memorialized and transferred to Conservation 20/20 or added to the Wild Blue preserve for continuity.

Further, I support connecting and protecting the Wild Blue flow-way and Wild Blue preserve as a corridor for water and wildlife moving from the 3,000 acres of Wild Turkey Preserve into the Wild Blue preserve and Estero.

I support protecting the confirmed panther on this property and the panther crossing over Alico Road. I support a large mammal crossing for any future road construction on Alico Road utilizing the 18.5-acre parcel as a connector. In the interest of public safety and awareness, I request the sign lowering speed for the panther zone previously on Alico at this location be reinstated to notify commuters to slow their speed.

I oppose extending the life of the Cemex Alico quarry because of changes in the character of the surrounding recent development approvals, including increases in residential densities as well as the protection of flow-ways, wetlands and panthers.

Sincerely,
Lee County Resident
Florida, USA

Inner Loop Working Group
Innerloopworkinggroup.com