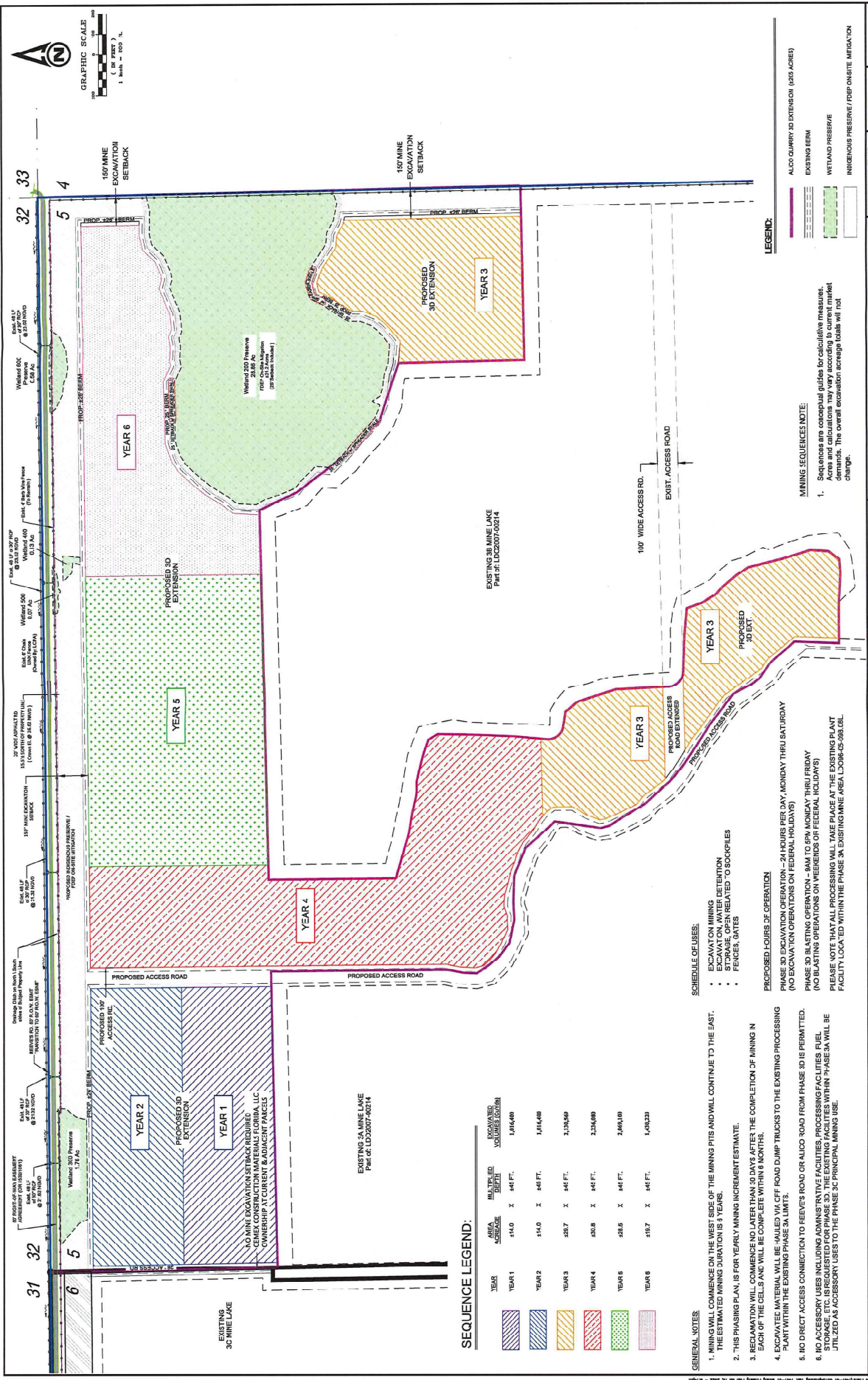


Additional info 08-16-2022

002021-0009 Lee County #Plan



**SEQUENCE LEGEND:**

YEAR	AREA SQUARE FEET	MIN. TAIL PILE VOLUME (CUBIC YARDS)
YEAR 1	141.0 X 445 FT.	1,016,400
YEAR 2	141.0 X 445 FT.	1,016,400
YEAR 3	258.7 X 445 FT.	1,336,560
YEAR 4	303.8 X 445 FT.	2,326,680
YEAR 5	258.5 X 445 FT.	2,496,100
YEAR 6	118.7 X 445 FT.	1,403,230

**GENERAL NOTES:**

- MINING WILL COMMENCE ON THE WEST SIDE OF THE MINING PITS AND WILL CONTINUE TO THE EAST. THE ESTIMATED MINING DURATION IS 6 YEARS.
- THIS PHASING PLAN IS FOR YEARLY MINING INCREMENT ESTIMATE.
- RECLAMATION WILL COMMENCE NO LATER THAN 90 DAYS AFTER THE COMPLETION OF MINING IN EACH OF THE CELLS AND WILL BE COMPLETE WITHIN 6 MONTHS.
- EXCAVATED MATERIAL WILL BE HAULED VIA C/F ROAD DUMP TRUCK TO THE EXISTING PROCESSING PLANT WITHIN THE EXISTING PHASE 3A LIMITS.
- NO DIRECT ACCESS CONNECTION TO REEVE'S ROAD OR ALICO ROAD FROM PHASE 3D IS PERMITTED.
- NO ACCESSORY USES INCLUDING ADMINISTRATIVE FACILITIES, PROCESSING FACILITIES, FUEL STORAGE, ETC. IS REQUESTED FOR PHASE 3D. THE EXISTING FACILITIES WITHIN PHASE 3A WILL BE UTILIZED AS ACCESSORY LIES TO THE PHASE 3C PRINCIPAL MINING USE.

**SCHEDULE OF USES:**

- EXCAVATION MINING
- EXCAVATION, WATER DETENTION
- STORAGE, OPEN RELATED TO STOCKPILES
- PEICES, BATES

**PROPOSED HOURS OF OPERATION**  
 PHASE 3D EXCAVATION OPERATION - 24 HOURS PER DAY, MONDAY THRU SATURDAY (NO EXCAVATION OPERATIONS ON FEDERAL HOLIDAYS)  
 PHASE 3B BLASTING OPERATION - 8AM TO 5PM MONDAY THRU FRIDAY (NO BLASTING OPERATIONS ON WEEKENDS OR FEDERAL HOLIDAYS)  
 PLEASE NOTE THAT ALL OPERATIONS WILL TAKE PLACE AT THE EXISTING PLANT FACILITY LOCATED WITHIN THE PHASE 3A EXISTING MINE AREA, LDC06-00-001.0.

**MINING SEQUENCES NOTE:**

- Sequences are conceptual guides for calculation purposes. The overall excavation acreage totals will not change.

**LEGEND:**

- ALICO QUARRY 3D EXTENSION (426 ACRES)
- EXISTING SEM
- WETLAND PRESERVE
- INDIGENOUS PRESERVE / FRIP ON SITE MITIGATION

DESIGNED BY: J.K.H. DATE: 2/2022

DRAWN BY: R.E.B. DATE: 2/2022

CHECKED BY: J.K.H. DATE: 2/2022

VERTICAL SCALE: 1"=20.0'

HORIZONTAL SCALE: 1"=400.0'

6203 Whiskey Creek Drive  
 Fort Myers, FL 33919  
 Phone: (239) 985-1100  
 Florida Certificate of  
 Authorization No. 172

PHASE 3D MINING SEQUENCING PLAN  
AND GENERAL NOTES

REFERENCE NO. 0013APHS

PROJECT NO. 2000.013A

DRAWING NO. 1467

SHEET NO. 7