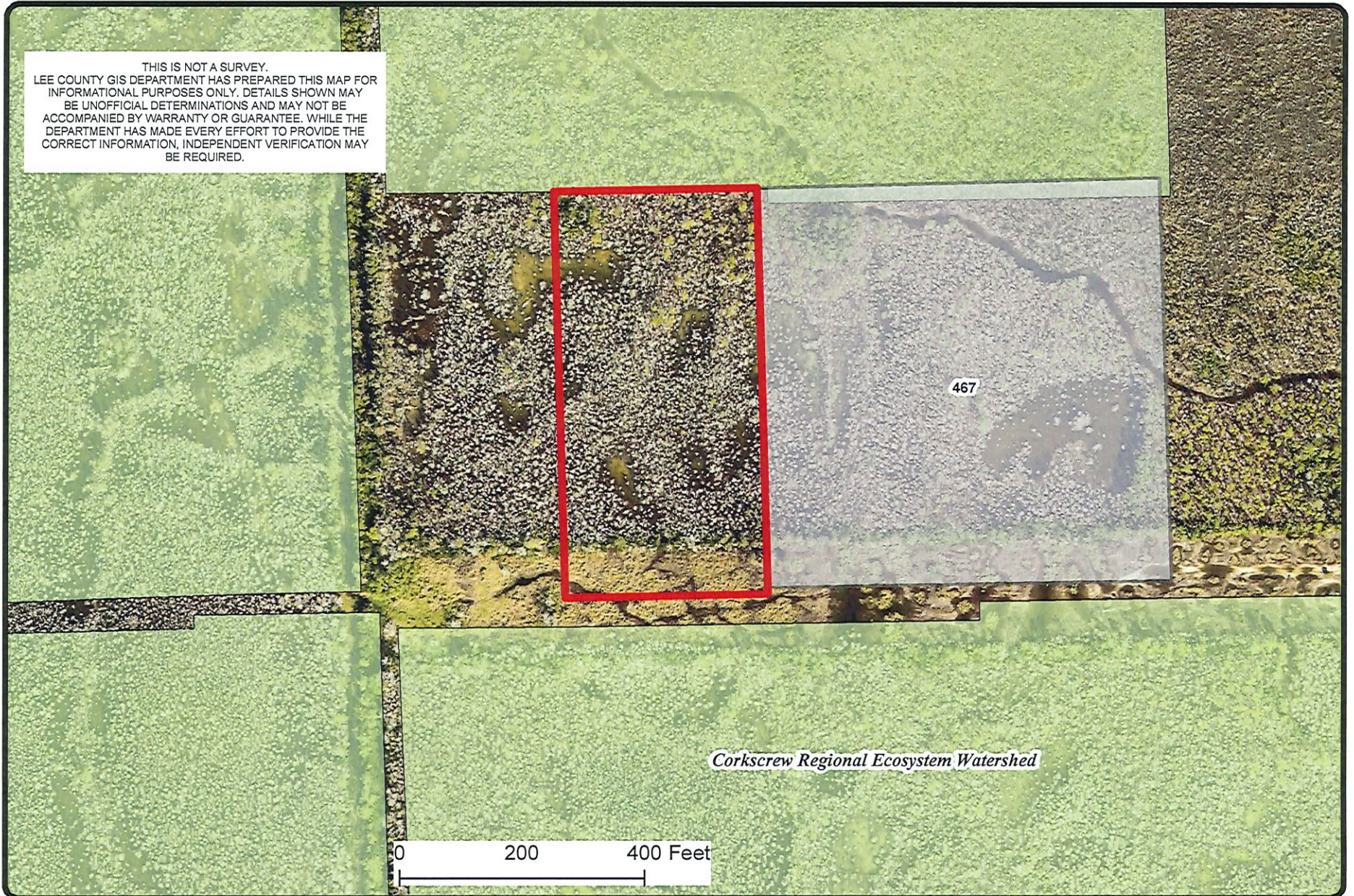


THIS IS NOT A SURVEY.  
 LEE COUNTY GIS DEPARTMENT HAS PREPARED THIS MAP FOR  
 INFORMATIONAL PURPOSES ONLY. DETAILS SHOWN MAY  
 BE UNOFFICIAL DETERMINATIONS AND MAY NOT BE  
 ACCOMPANIED BY WARRANTY OR GUARANTEE. WHILE THE  
 DEPARTMENT HAS MADE EVERY EFFORT TO PROVIDE THE  
 CORRECT INFORMATION, INDEPENDENT VERIFICATION MAY  
 BE REQUIRED.



- NOMINATION UNDER REVIEW
- NOMINATIONS ACQUIRED
- WITHDRAWN
- Existing Other Conservation Lands



<b>Conservation 20/20 Nomination 608</b>				
<b>STRAP No. 27-47-26-00-00001.0160</b>				
<b>Owner: Smoak, Hannelore (5-acres)</b>				
DATE	PROJECT	SCALE	SHEET	
Oct 2020	C20/20	NTS	1 of 1	

(As of 8/21/2018)

CRITERIA		SCORE		COMMENTS
<b>A. Size and Location</b>		<b>15</b>	<b>7</b>	
Size of Property	>=500 acres	10	0	5 acres
	400 to < 500 acres	9		
	300 to < 400 acres	8		
	200 to < 300 acres	6		
	100 to < 200 acres	4		
	50 to < 100 acres	2		
	< 50 acres	0		
Contiguous to	Coastal waters/other sovereignty submerged land and/or an existing preserve area, c.e. wma or refuge	5	5	CREW
	Preserve area officially proposed of acquisition	2	2	CREW
<b>B. Habitat for Plants and Animals</b>		<b>22</b>	<b>11</b>	
Native Plant Cover	>= 75 % of the property has native plant cover	8	8	
	50% to < 75% has native plant cover	4		
	25% to <50% has native plant cover	2		
	< 25% has native plant cover	0		
Significant for wide-ranging species	Panther Habitat, wetlands, ponds, grass lands, etc.	2	2	
Rare and Unique Uplands	Scrub, hammock, old growth pine	2	0	
	Mature, second growth pine flatwoods	1		
Diversity	5 or more FLUCFCS native plant community categories	2		
	3 or 4 FLUCFCS native plant community categories	1	1	Cypress strand, wet flatwoods, wet prairie, hydric hammock
	2 or less FLUCFCS native plant community categories	0		
Mitigation	Public projects with mitigation credit potential	8		DCD

(As of 8/21/2018)

CRITERIA		SCORE		COMMENTS
<b>C. Significant for Water Resources</b>		<b>50</b>	<b>50</b>	
Serves or can serve as flow-way and provides flood protection	Site contains a primary flow-way, creek, river, wetland corridor; large contributing watershed; possibly identified in the Lee County Surface Water Master Plan, South Lee County Study, or by staff	5	5	
	Site contains flow-way, through tributary, medium size watershed, or just a portion of system/one side of conveyance, may not be identified in study	4		
	Site has potential for rehabilitation, restoration, creation, reconnection, or manipulation to restore	3		
	Same as b., smaller watershed, not as defined, disconnected	2		
	Site conveys runoff, minimal area	1		
	Site entirely contained, no runoff	0		
	Add 5 points if the parcel is within a designated FEMA floodway or otherwise provides floodplain protection	5	5	
	Add 5 points if conveyance is natural (not man-made)	5	5	
Protect a water supply source	Parcel is within area designated high potential productivity of the Water Table, Sandstone or Tamiami Aquifer and also within area of current or proposed wellfield development	5	5	
	Not within above mentioned zones, but advantageous due to proximity to existing water supply facilities or identified as potential water storage area	3		
	No recharge or potential water supply opportunities	0		

(As of 8/21/2018)

CRITERIA		SCORE		COMMENTS
<b>C. Significant for Water Resources (Cont'd)</b>				
Improves Water Quality	Parcel is located in a watershed with an adopted Total Maximum Daily Load and has the ability to provide quantified and clear water quality benefits (e.g. Basin Management Action Plan load reduction credits)	30	30	
	Parcel is located in a watershed identified on the State's Verified List of Impaired Waters and has the ability to provide quantified and clear water quality benefits	15		
	Parcel may provide water quality benefits but there is little or no ability to provide quantification of benefits	10		
Offset Damage to or Enhance Water Quality	No existing or potential water quality benefits	0		
<b>D. Recreation/Land Manageability</b>		<b>13</b>	<b>10</b>	
Recreation/Eco-Tourism Potential	Score depends upon the variety or uniqueness of potential public uses. Examples of appropriate public uses include paddling sports, fishing, hiking, equestrian, mountain biking, photography, nature study, and environmental education about native plants and animals, eco-archaeological resources, land restoration, etc. (Max of 2)	2	1	
Land Manageability	75% or greater of the perimeter of site is surrounded by low impact land uses	3	3	
	50%-75% of the perimeter of site is surrounded by low impact land uses	2		
	25%-50% of the perimeter of site is surrounded by low impact land uses	1		
	Less than 25% of the perimeter of the site is surrounded by low impact land uses	0		

(As of 8/21/2018)

CRITERIA		SCORE		COMMENTS
Land Manageability (Cont'd)	Good potential for panther, wood stork, gopher tortoise or bonneted bat mitigation	2	0	
	Project has potential to hold more water on the land through restoration efforts; Small scale alterations needed (exotic plant removal or livestock removal)	3	3	Agreement with the South Florida Water Management District for management
	Project has potential to hold more water on the land through restoration efforts; Small scale earthwork: ditch plugs, berm breaches	2		
	Project has potential to hold more water on the land through restoration efforts; Large scale earth moving projects	1		
	Fire dependent communities and ability to use prescribed fire; No immediate Wildland Urban Interface issues or non fire dependent communities	3	3	
	Fire dependent communities and ability to use prescribed fire; 1 side has Wildland Urban Interface issues	2		
	Fire dependent communities and ability to use prescribed fire; 2 or more sides have Wildland Urban Interface issues	1		
<b>TOTAL POINTS</b>		<b>100</b>	<b>78</b>	Maximum Points = 100

**Staff Comments:** OGMs were found as part of an in-house title review. However, the right of entry has been barred by the Marketable Record Title Act. **The CREW Land and Water Trust has pledged \$2,000 in contributory acquisition funds to complete the acquisition of parcels within this area.**

**CLASAC Recommendation:**

2020-Oct-21