



HUMANITY

**WORLD
WISDOM &
WELLBEING
REPORT**

PEACE

NATURE

WORLD WISDOM & WELLBEING REPORT 2023

HUMANITY

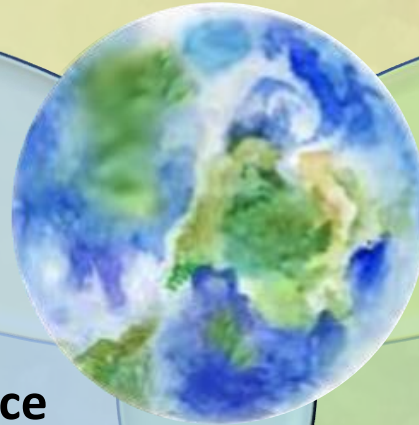
- Leading with Wisdom
- Creating Wellbeing Economy
- Spending for Human, Social & Earth Wellbeing
- Educating for Wisdom, Compassion & Wellbeing

PEACE

- Increasing Global Disarmament
- Reducing Crime, Corruption & Violence
 - Abolishing Nuclear Weapons
 - Ending War & Militarism

NATURE

- Creating Bioregeneration
- Grappling with Climate Disruption
- Ending Fossil Fuel Burning & Subsidies
- Creating Healthy, Livable Communities



WORLD WISDOM & WELLBEING REPORT CARD FOR 2022

Humanity

LEADING WITH WISDOM FOR WISOCRACY	Population in Wisocracy 0%, Full Democracy 6.4%
CREATING WELLBEING ECONOMY	A little progress – World Economy Alliance developing
SPENDING FOR HUMAN, SOCIAL & EARTH WELLBEING	Regression – war absorbing resources
EDUCATING FOR WISDOM, COMPASSION & WELLBEING	Regression – polarization, hatred and hostility growing

Peace

INCREASING GLOBAL DISARMAMENT	No progress
REDUCING CRIME, CORRUPTION & VIOLENCE	Data not turned into meaningful knowledge, insufficient global reporting
ABOLISHING NUCLEAR WEAPONS	No progress
ENDING WAR & MILITARISM	27 ongoing conflicts worldwide

Nature

CREATING BIOREGENERATION	A little progress – Good website developed; still losing species
GRAPPLING WITH CLIMATE DISRUPTION	Deteriorating rapidly; heading toward +2°C by 2050, +4° by 2100
ENDING FOSSIL FUEL BURNING & SUBSIDIES	No progress, greenwashing by corporations, massive lobbying
CREATING HEALTHY, LIVABLE COMMUNITIES	No global data available

WORLD PROGRESS - REVIEW



Meet
Meditate
Brainstorm
Collaborate
Divest
Invest

1. The World Wisdom & Wellbeing Report for 2023 measures the progress of Humanity, Nature, and Peace.
2. Many organizations host meeting after meeting, conference after conference, year after year, and even decade after decade, often focusing on membership, dues, fundraising, and galas, with *no systemic and structural change – politically for Wisocracy, and economically for Wellbeing.*
3. They make themselves look and sound good by attending meeting after meeting, and conference after conference, but they're not getting anything done globally for *systemic and structural change.*
4. The 10 million nonprofit and nongovernmental organizations *don't collaborate for systemic and structural change.*
5. We are struggling to contain:
 - The Military - Industrial - Surveillance Espionage COMPLEX
 - The Conflict Politics - Fund Raising - Publicity - Social Media - Podcast Pundits - Media Profit on Conflict COMPLEX
 - The Fossil Fuel Corporatocracy
6. They are all causing local, national, and world conflict.

WORLD PROGRESS - REVIEW



Meet
Meditate
Brainstorm
Collaborate
Divest
Invest

- 7.** There are many obstructionists, authoritarians, and now fascists growing on Earth who support repression and war and are against the environment.
- 8.** People are stuck in their silos and paradigms.
- 9.** People are politically obstructing each other's agendas.
- 10.** People just continue doing what they are doing, with the system not changing.
- 11.** When people work alone, they don't brainstorm to generate creative, new ideas.
- 12.** When they don't meditate, they don't access their higher-creative-wiser mind.

WORLD PROGRESS - REVIEW



Meet
Meditate
Brainstorm
Collaborate
Divest
Invest

- 14.** Groups actively working for a Protopian world (highly conscious, compassionate, and creative) are probably much less than 1% of the global population.
 - 100% = 8,000,000,000
 - 10% = 800,000,000
 - 1% = 8,000,000
- 15.** As we are heading for extinction, there are probably 2 billion supporters for world wisdom, wellbeing economy, peace, and nature, but they do not collaborate.
- 16.** There are also 2 billion “comfortably successful” people worldwide, not doing anything to help the world.
- 17.** Presently they focus on sports and entertainment.
- 18.** They are wasting their brains just when the planet needs them.
- 19.** They need to activate their brains to look for solutions.
- 20.** They can be brought into the process to create local and global Evolutionary Learning Groups where they can research solutions, and propose policy and legislation to local, regional, and national elected officials.

WORLD PROGRESS - RECOMMENDATIONS



Meet
Meditate
Brainstorm
Collaborate
Divest
Invest

- 1. We need to help humans evolve to be more conscious, collaborative, and creative to then get to the goals for peace and nature.**
- 2. Individuals and organizations need to collaborate.**
- 3. The Wisdom & Wellbeing Teams (Evolutionary Learning Groups) can meet frequently on Zoom, meditate and brainstorm with each other to produce breakthrough ideas.**
- 4. We need to develop smart electric systems, renewable energy, mass transportation, and end fossil fuel use.**
- 5. We can support *Divestment from Weapons, War, and Carbon Fuel*.**
- 6. We can support *Investment in Human, Social, and Earth Wellbeing* – a peaceful, green, sharing, and caring economy.**



5

Propose solutions to elected officials to create policy and legislation.

1

Be conscious, collaborative, and creative for wisdom, wellbeing economy, peace, and nature.

4

Research and produce breakthrough ideas.

2

Meet regularly: weekly, biweekly, or monthly.

3

Meditate and brainstorm with each other.

Evolutionary Learning, Solutions & Policy Pods



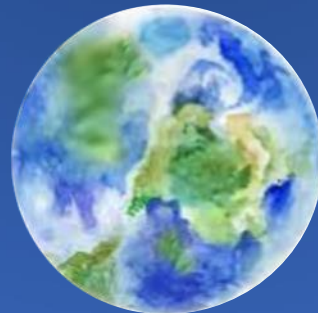
[Click to Learn More ~ Second Sundays](#)

WORLD POPULATION IN WISOCRACY DASHBOARD

FULL
DEMOCRACIES

TOTALITARIAN CONTROL	AUTHORITARIAN REGIMES	HYBRID REGIMES	FLAWED DEMOCRACIES	↓	0% WISDOM WELLBEING WISOCRACY
	37.1 %	17.2 %	39.3 %		6.4 %

54.3%



45.7%

We need people who care and collaborate to solve local, national, and global problems.
 We need to find ways to communicate it is in people's interest to support peace and nature.

SURVIVING	2 billion people	Can't afford to care	Struggling to survive	Finding water, food, shelter	Living day-to-day
STRIVING	2 billion people	Can almost afford to care, but don't care	Struggling to succeed	Finding work, transportation	Living week-to-week
SUCCEEDING	1 billion people	Can afford to care, but don't care	Average status quo	Climbing the ladder of success	Vote for who supports cheap gasoline Fear of crime and competition, support police & military to preserve their advantages Very high CO2 emissions
ADVANTAGED	1 billion people		Elite status quo	Protecting wealth and competitive Proud of high-carbon lifestyle	
CARING	2 billion people	Can afford to care, and do care	Many NGOs, Nonprofits, Health & Human Services, Education Philanthropists	Competing for attention, positions resources, and recognition	Attend many conferences Little to no incentives to collaborate

The Ripple Economy of Hurt & Harm



The Ripple Economy of Wisdom & Wellbeing

Self-Love & Self-Care

Appreciation for Self & Others

Wise Trust & Healthy Boundaries

Gratitude & Happiness

Co-Creating with Kind Humans for Human Kind

Co-Creating Wisdom & Wellbeing for All

**Helpful Economy
for Self, Others & Nature**

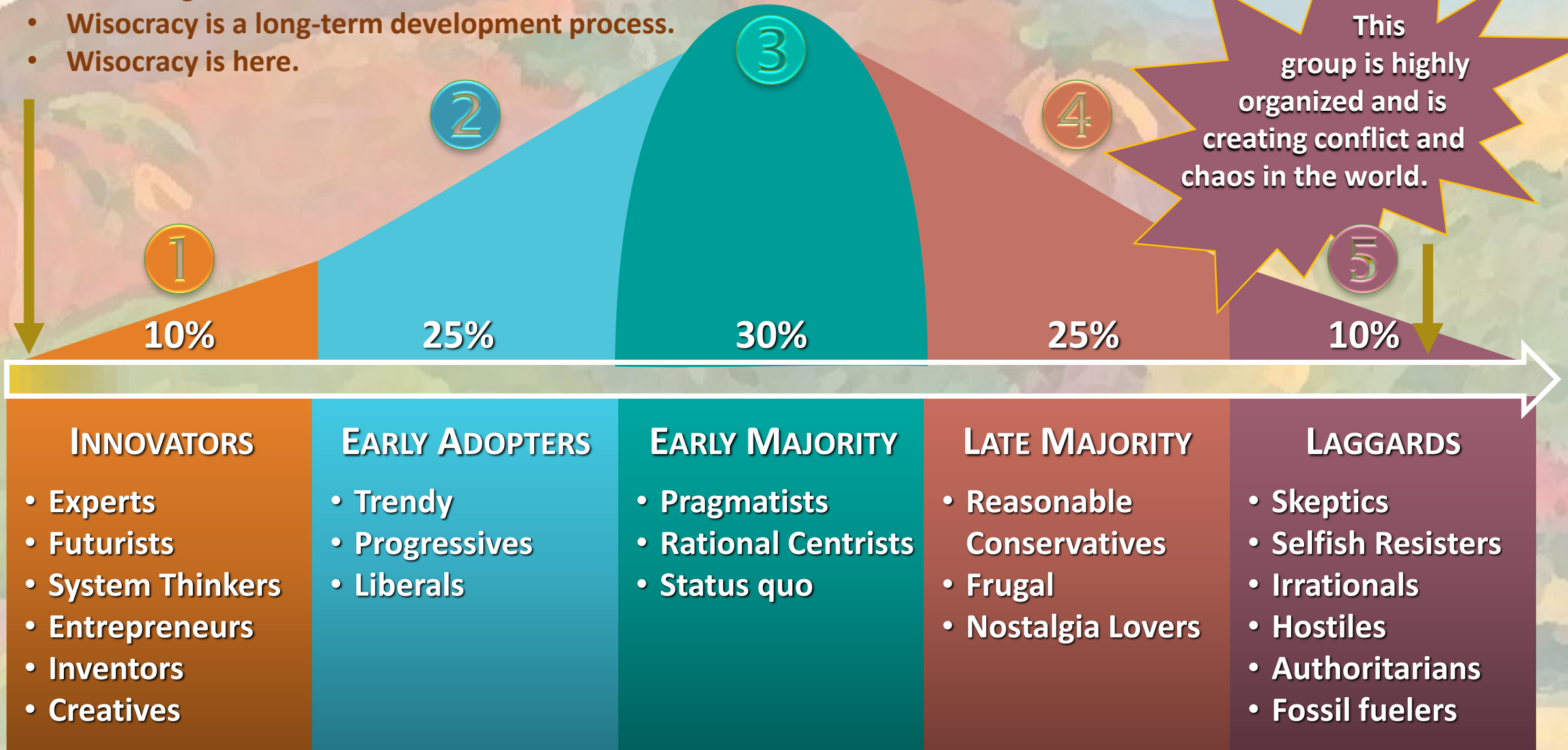


What We Value Depends on What We Identify With Expanding Identification, Empathy, Compassion, Concern, Care



WISOCRACY ADOPTION CURVE - DIFFUSION OF INNOVATION

- Percentages are estimates.
- Wisocracy is a long-term development process.
- Wisocracy is here.





YOU CAN SUPPORT
WORLD WISDOM & WELLBEING REPORT
HERE