

5m Tuffet & Wind Streamer Manual



WARNING

Skydiving is a dangerous activity which may result in injury or death, our tuffet is not designed to save life or prevent injury, it is intended for use by qualified parachutists engaged in practicing the discipline of precision accuracy landings.

“Precision Accuracy Landing” training and competition will be conducted within the maximum wind speed limits of 6 to 8m/s.

The tuffet is designed to be used as an inflatable structure so that an automatic measuring device landing pad can be placed on the top surface.

NO liability is accepted for the use of our tuffet in any way, by using this tuffet you (the owner) accept full responsibility for all aspects of its use.

CAUTION: This tuffet weighs 84KG and requires a minimum of 2 adult persons to carry the load.

CAUTION: This tuffet is **not** to be used as a children's play area.

This owner's manual is provided in the "English" language only. Please make sure you understand the meaning and implications of the manual. If you require a translation of this manual into another language, please contact us.

Do not overload the tuffet; it is designed to for an individual parachutist landing on it.

When a parachutist has landed, they should immediately, leave the tuffet to clear the way for others.

The 5m Tuffet is supplied with an electric fan unit.

Please remember to use electrical safety precautions at all times and use an RCD unit in the mains power supply chain. If you are using a generator, please follow the manufacturer's instructions and make sure that the generator frame is fully grounded and earthed at all times.



We also provide the following items with your tuffet.

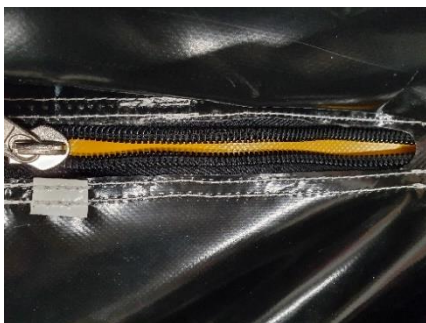
- 1.4x tuffet ground retaining pegs.
- 2.1x Peg hammer.
3. Tuffet repair fabrics.

Initial inspection.

At the first opportunity you should take the tuffet out of the valise, unroll and lay the tuffet out so it is easy to inspect. Examine the tuffet carefully to make sure you are satisfied that all seams are good, while you are doing this you will become familiar with the tuffet construction.

You will find that we have provided 4 landing pad tie down cords to the tuffet, routed through each of the top surface cable covers.

You now need to locate an important part of the tuffet construction, the “**OUTFLOW ZIP CONTROL**”



Look at the base of the tuffet, the outflow zip closing is located on the right hand side, it allows you to control the internal pressure of the tuffet.

For practical use, we recommend that you allow a **150mm opening**, you can adjust the tuffet pressure to your specific requirements by closing or opening this zipper control mechanism.

The OUTFLOW ZIP Control is also used when packing up the tuffet, fully open the zip control to allow all air within the tuffet to be expelled, before you roll up the tuffet, make sure that you “reset” the zip control to 150mm open ready for the next use.

SETTING UP AND DAILY USE INSTRUCTIONS

DO NOT place the tuffet near to an active runway or aircraft taxiway.



5.5HP petrol fan shown for example only.

Find the smoothest level place in the allocated tuffet area, walk over the site, and remove any debris or stones that may damage the inflatable tuffet.

1. Undo the travel and storage valise, roll out and unfold the tuffet.
2. Consider the prevailing wind line and orientate the tuffet so that the inlet tube is at a 90 degree angle to the prevailing wind line.
3. Attach the inflation tube to the fan unit, using the cam lock strap, secure the inflation tube firmly to the fan unit outlet cone.
4. Using one of the tuffet anchoring points provided, “temporarily” restrain the tuffet on the prevailing wind side with one of the anchor pegs provided so that the tuffet cannot be disturbed by an unforeseen gust of wind or other external influence. Keep away from live aircraft taxiways or runways!
5. Inflate the tuffet and then, control the volume of air within the tuffet by opening the outflow zipper on the underside of the tuffet to achieve the optimum pressurisation within the tuffet for its intended use, a 150mm opening is recommended as a starting point for use.
6. As a safety precaution ensure that the tuffet is fully anchored into the prevailing wind direction, NB in loose or sandy soil, to secure the ground anchoring peg, use a fully filled sandbag placed on top of the ground anchoring peg so it cannot be pulled out of the ground.
7. The "Electric Fan Unit" is a cold unit; however, you must ensure that all electrical connections are waterproof; Use of a 3 core, fully grounded electrical cable with suitable sockets for outside use and a residual circuit breaker device (not supplied) are mandatory.
8. The electric fan unit is water resistant; however as with any electrical appliance, both require protection from gross water contamination.
9. Do not attempt to float the tuffet on water; it is not designed for this purpose.
10. Always follow the manufacturer’s instructions for the fan unit.

11. The AMD cables can be routed inside the 4 cable covers and the pad tie down cords can be routed in the same way.

12. In the eventuality of rain, it is advisable to remove the AMD pad(s), deflate the tuffet and fold the tuffet in half over itself to prevent gross water infiltration.

13. Do not leave the tuffet outside for extended periods, it is best to protect it from extreme weather conditions, if it is not in use... pack it up.

After using the tuffet.

Switch the fan power supply off, disconnect the inflation tube, remove the anchor stakes from the ground, fully open the Outflow ZIP Control, allow the tuffet to fully deflate,



Lay the inflation tube on the top surface as shown.

Make the first fold into the centre.



Make the second fold into the centre.



Lay the first fold over the second fold.



Fold the inlet tube end over as shown.



Fold the tuffet as shown, right side over to left side.

Start at the far end away from the inflation tube, tightly roll the tuffet towards the inflation tube.

Use your hands to work the air out of the tuffet until the tuffet is fully rolled and will fit into the valise.

Use the cam locking strap to secure the tuffet.

If the tuffet was not completely dry on the outside AND on the inside before final storage, inflate the tuffet inside a suitable dry building and keep inflated with the fan unit until fully dry.

Gross water infiltration may require you to inflate the tuffet and then invert it to allow the water to drain away and escape.

Technical Details

Tuffet dimensions: 5 meters' diameter, 55 centimetres high.

Area: 38.48 m², Volume: 21.17 m³, Weight: 84kg

Inlet tube: 20m long x 16.5cm external diameter

Total volume of tuffet & inlet tube: 16.17 m³

Electric Fan.



Fixed air flow output 29.73 cm/m, Weight: 16.3Kg / 36lbs.
110V/220V/240v. Functions up to 120 meters from main power supply using extension cable* and Residual Current Circuit Breaker* *End user to supply.

Cleaning and maintaining the tuffet.

The base and side walls of the tuffet can be safely cleaned using a pressure washer with suitable care and attention. Do not blast it on high pressure, you are trying to clean the base and avoid damage to the seam structures!

Wash the top surface by hand with a mild soap and water.

Heel marks can usually be removed using “White Spirit” and a clean cloth, immediately after cleaning with white spirit, wash the area with a mild soap and water to clean the area, allow the surface to become fully dry before storing away for future use.

If the tuffet gets wet, always allow the tuffet to dry out in a well-ventilated aircraft hangar or, a warm dry environment while it is fully inflated.

If the tuffet contains a volume of internal water, invert the tuffet and inflate it, lift one side until the water drains out of the upper surface ventilation mesh areas, now do the same lifting and draining on the opposite side, continue until all internal water is expelled. Continue to inflate the tuffet until the base seams are dry to touch.

Now put the tuffet into its correct orientation, top surface up, keep the tuffet inflated until the seams of the top surface are dry to touch.

When there is no more water being expelled from the bottom surface or, from the top surface, and, the seams are dry, you can continue to pack the tuffet away into the storage and transit valise.

Minor repairs may be carried out using the PVC fabric supplied with the tuffet and a “contact” adhesive, contact us for advice on the correct adhesive to use.

1. Cut the patch so it is 5cm larger than the area to be repaired.
2. Centre the patch over the area to be repaired and mark around it with a ball point pen.
3. Use an abrasive scouring pad to roughen both the contact surfaces.
4. Clean the area to be repaired with soap and water.
5. Carefully dry the area.
6. Apply a thin and even coat of the adhesive to both surfaces and leave to dry for 30 seconds before bonding.
7. Align the surfaces carefully and when in place, press firmly together.
8. Wait at least 1 hour before using tuffet, the adhesive will achieve full strength over 24 hours.

We reserve the right to change, alter or modify any specification or detail of construction, all dimensions are approximate due to the flexibility of the fabric used, and through the manufacturing process during construction.