

TEMPERATURE-  
CONTROLLED  
LOCKERS  
PRODUCT  
CATALOGUE



**Click n Collect**  
Reinventing click-and-collect



# INDUSTRY LEADING SOLUTIONS

For more than three decades, we've been leading the innovation curve in locker hardware and software development, demonstrating our dedication to superior craftsmanship and forward-thinking technology.



## ADA COMPLIANT

Our Smart Lockers incorporate design elements that comply with the Americans with Disabilities Act (ADA).



## DOE COMPLIANT

Department of Energy (DOE) adherence ensures our lockers are energy-efficient yet high-performing.



## NSF COMPLIANT

Compliance with National Sanitation Foundation (NSF) standards ensures sanitary and safe storage.

# KEY FEATURES



## ENVIRONMENTAL LEADERSHIP

Pioneering R290 refrigerant use for lower GWP (3) and superior eco-friendliness.



## ADVANCED INVERTER SYSTEMS

Streamlined efficiency with versatile compressors and dynamic temperature control.



## SMART POWER- SAVING INNOVATIONS

Innovative energy-saving features like intelligent door heaters and adaptive defrost cycles.



## SELF-CLOSING DOOR MECHANISM

Auto-closing doors for optimal energy use and enhanced temperature management.



## INTEGRATED TEMP CONTROL

Fully integrated monitoring for optimal conditions.



## AGE & IDENTITY VERIFICATION

Provide seamless age checks, facilitating efficient purchases of products like alcohol and tobacco.



# PRODUCT RANGE



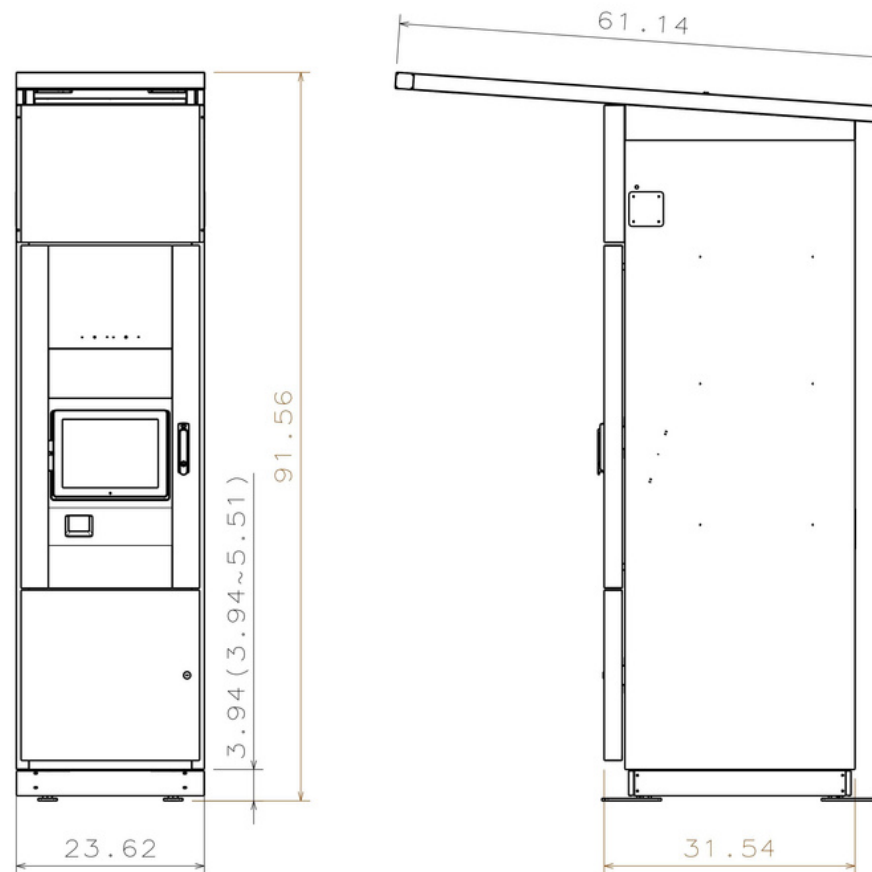
# LOCKER KIOSK

## Dimensions and Weight

Width	23.62"
Depth	31.54"
Height	
• Outdoor System	91.56"
• Indoor System	88.24"
Number of Compartments	0
Net Weight (lbs)	340

## Technical Data

Power	208-254V AC 50/60 Hz
Rated Current (Amps)	5.0 (max. at 220v) Incl. Cold Climate Heaters (2.0A)
Touch Screen	12x9" LCD
Barcode Scanner	1D and 2D
Door Management Capacity	Up to 300
Water Resistance	IP64
Connectivity	WiFi, 4G/5G, Ethernet
Certifications	UL. CE. RCM.



Your Click n Collect system is designed for ease and efficiency - in most cases, only a single electrical connection is required at the terminal. This streamlined approach ensures a straightforward and cost-effective installation process, minimizing the complexity and resources needed for power setup.

# 8 - D O O R

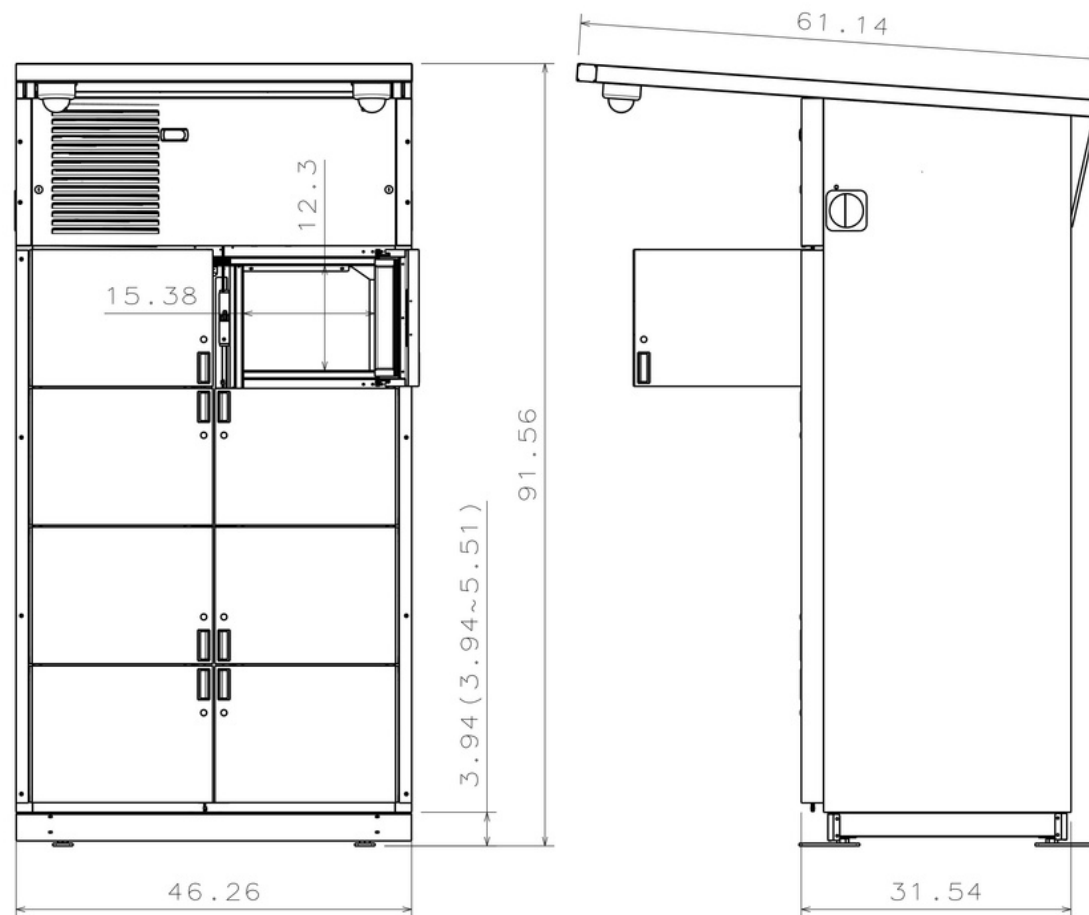
## COMPACT

### Dimensions and Weight

Width	46.26"
Depth	31.54"
Height	
• Outdoor System	91.56"
• Indoor System	88.24"
Number of Compartments	8
Compartment Vol. (Cubic Ft.)	2.9 (min)
Net Weight (lbs)	570 - 630
Shelf Bearing Weight (lbs)	110

### Technical Data

Power	208-254V AC 50/60 Hz
Rated Current (Amps)	4.2 (max. at 220v)
Refrigerant	R290
Water Resistance	IP64
Certifications	UL. CE. RCM.
Rear-loading	Yes



### TEMPERATURE OPTIONS



CONTROLLED-  
AMBIENT



CHILLER



FREEZER



HEATED

# 15 - DOOR

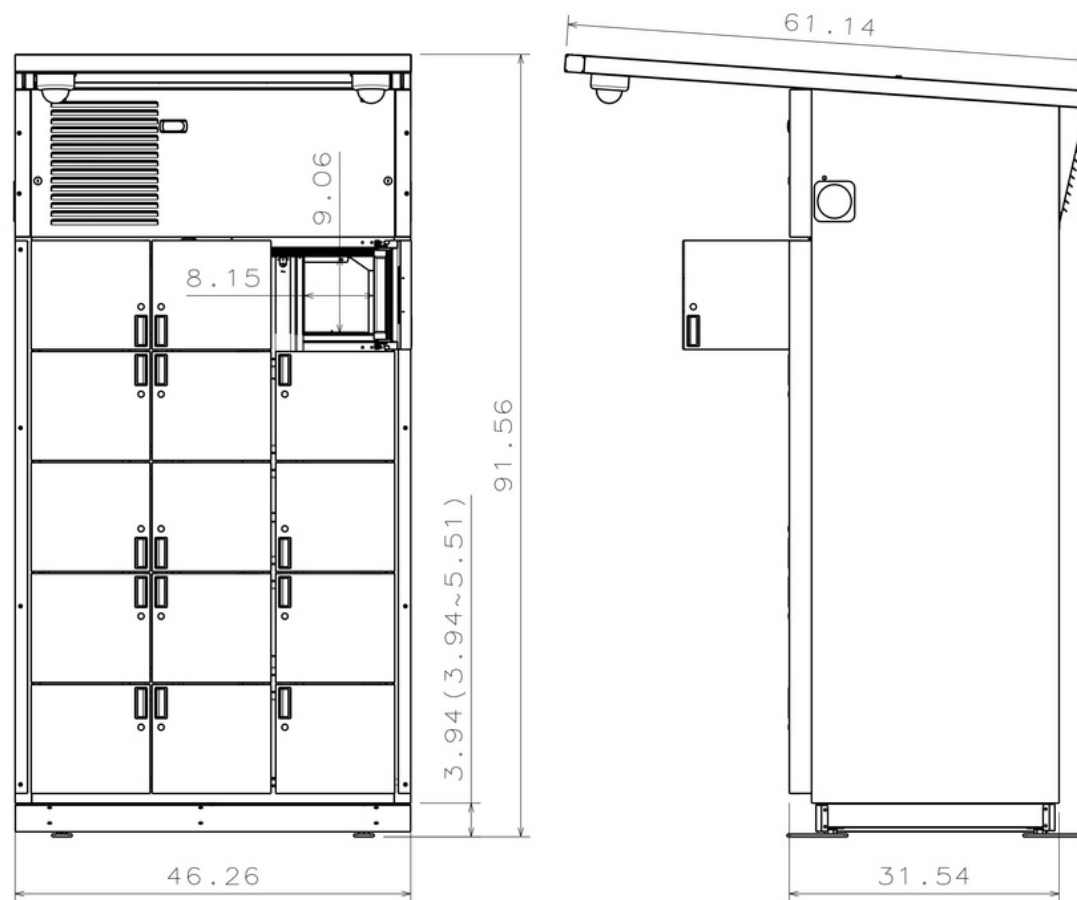
## COMPACT

### Dimensions and Weight

Width	46.26"
Depth	31.54"
Height	
• Outdoor System	91.56"
• Indoor System	88.24"
Number of Compartments	15
Compartment Vol. (Cubic Ft.)	1.3 (min)
Net Weight (lbs)	570 - 630
Shelf Bearing Weight (lbs)	110

### Technical Data

Power	208-254V AC 50/60 Hz
Rated Current (Amps)	4.2 (max. at 220v)
Refrigerant	R290
Water Resistance	IP64
Certifications	UL. CE. RCM.
Rear-loading	No



### TEMPERATURE OPTIONS



CONTROLLED-  
AMBIENT



CHILLER



FREEZER



HEATED



# 9 - DOOR

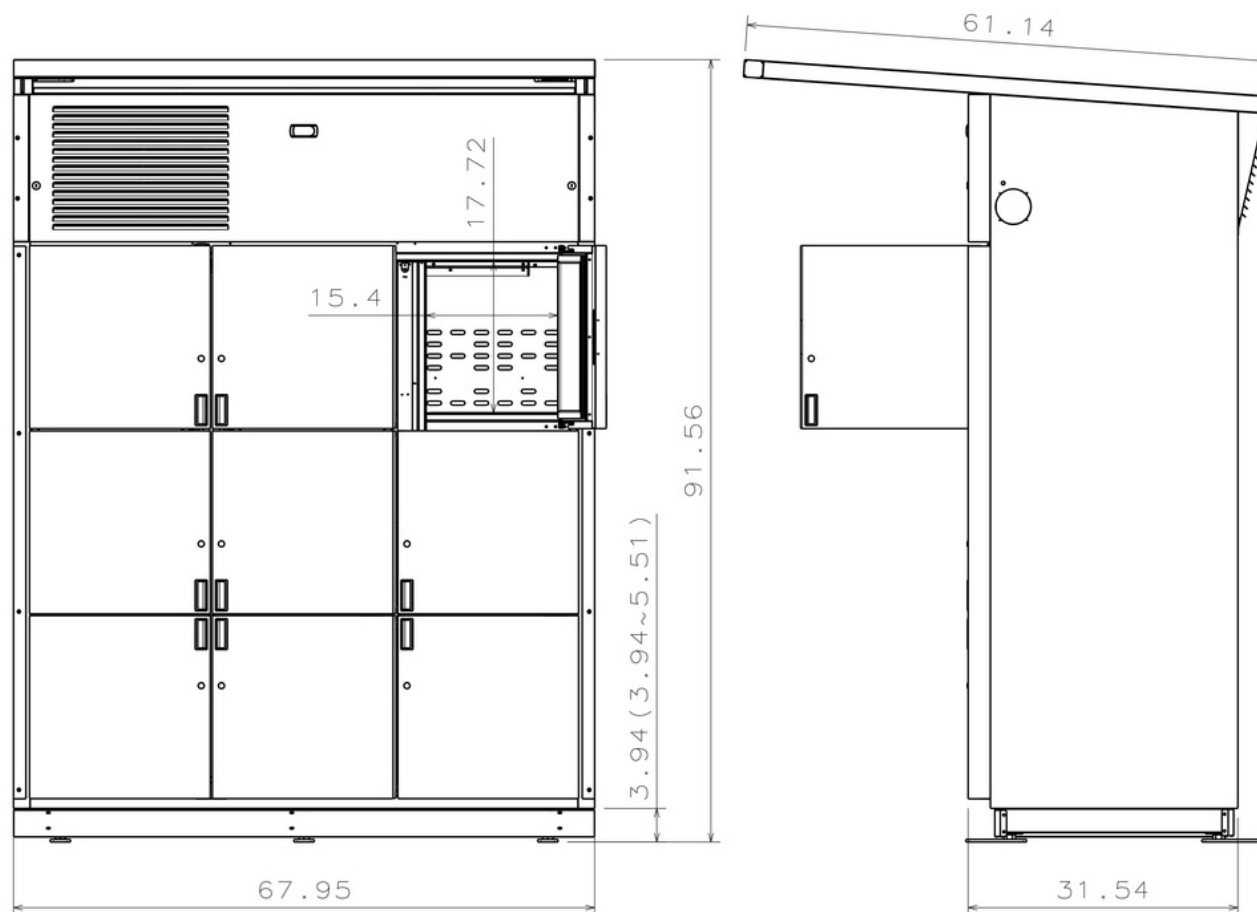
## MEDIUM

### Dimensions and Weight

Width	67.95"
Depth	31.54"
Height	
• Outdoor System	91.56"
• Indoor System	88.24"
Number of Compartments	9
Compartment Vol. (Cubic Ft.)	4.5 (min)
Net Weight (lbs)	795 - 840
Shelf Bearing Weight (lbs)	110

### Technical Data

Power	208-254V AC 50/60 Hz
Rated Current (Amps)	7.5 (max. at 220v)
Refrigerant	R290
Water Resistance	IP64
Certifications	UL. CE. RCM.
Rear-loading	No



### TEMPERATURE OPTIONS



CHILLER



CONTROLLED-  
AMBIENT



FREEZER



# 12 - DOOR

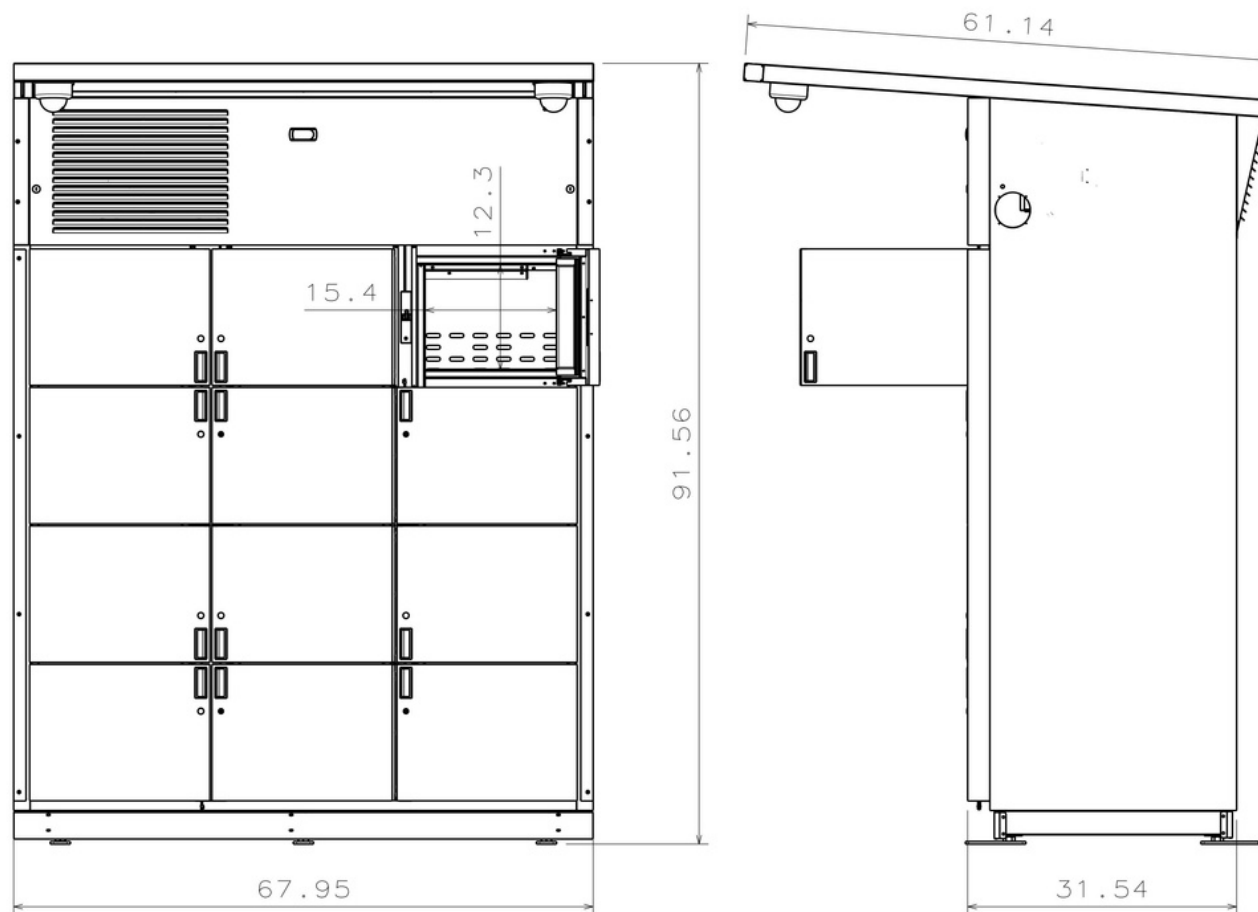
## MEDIUM

### Dimensions and Weight

Width	67.95"
Depth	31.54"
Height	
• Outdoor System	91.56"
• Indoor System	88.24"
Number of Compartments	12
Compartment Vol. (Cubic Ft.)	3.2 (min)
Net Weight (lbs)	795 - 840
Shelf Bearing Weight (lbs)	110

### Technical Data

Power	208-254V AC 50/60 Hz
Rated Current (Amps)	7.5 (max. at 220v)
Refrigerant	R290
Water Resistance	IP64
Certifications	UL. CE. RCM.
Rear-loading	No



### TEMPERATURE OPTIONS



CHILLER



CONTROLLED-  
AMBIENT



FREEZER

# 9 - DOOR

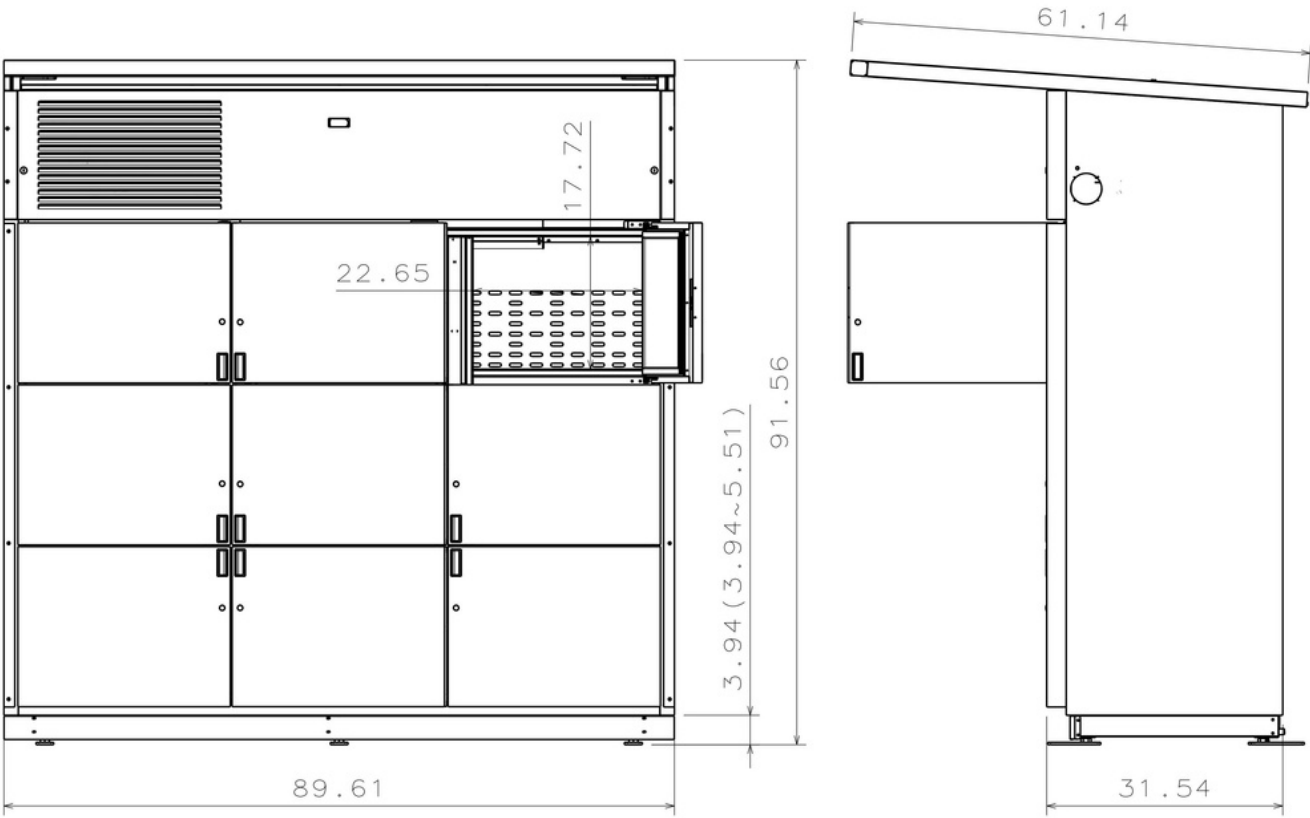
## LARGE

### Dimensions and Weight

Width	89.61"
Depth	31.54"
Height	
• Outdoor System	91.56"
• Indoor System	88.24"
Number of Compartments	9
Compartment Vol. (Cubic Ft.)	6.2 (min)
Net Weight (lbs)	1015 - 1135
Shelf Bearing Weight (lbs)	110

### Technical Data

Power	208-254V AC 50/60 Hz
Rated Current (Amps)	5.5 - 8.5 (max. at 220v)
Refrigerant	R290
Water Resistance	IP64
Certifications	UL. CE. RCM.
Rear-loading	No



### TEMPERATURE OPTIONS



CHILLER



CONTROLLED-  
AMBIENT



FREEZER

# 12 - DOOR

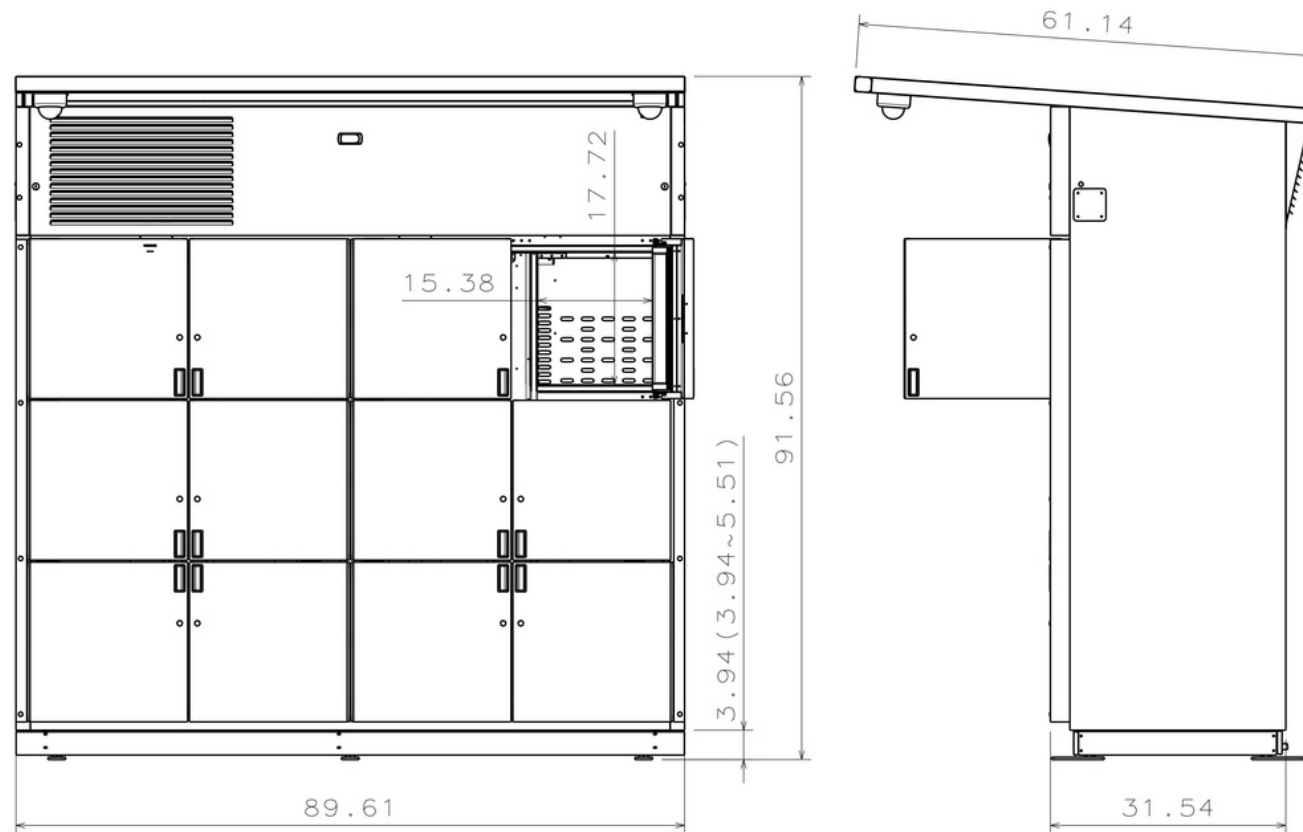
## LARGE

### Dimensions and Weight

Width	89.61"
Depth	31.54"
Height	
• Outdoor System	91.56"
• Indoor System	88.24"
Number of Compartments	12
Compartment Vol. (Cubic Ft.)	4.7 (min)
Net Weight (lbs)	1015 - 1135
Shelf Bearing Weight (lbs)	110

### Technical Data

Power	208-254V AC 50/60 Hz
Rated Current (Amps)	5.5 - 8.5 (max. at 220v)
Refrigerant	R290
Water Resistance	Water Resistance
Certifications	UL. CE. RCM.
Rear-loading	Yes



### TEMPERATURE OPTIONS



CHILLER



CONTROLLED-  
AMBIENT



FREEZER

# 15 - DOOR

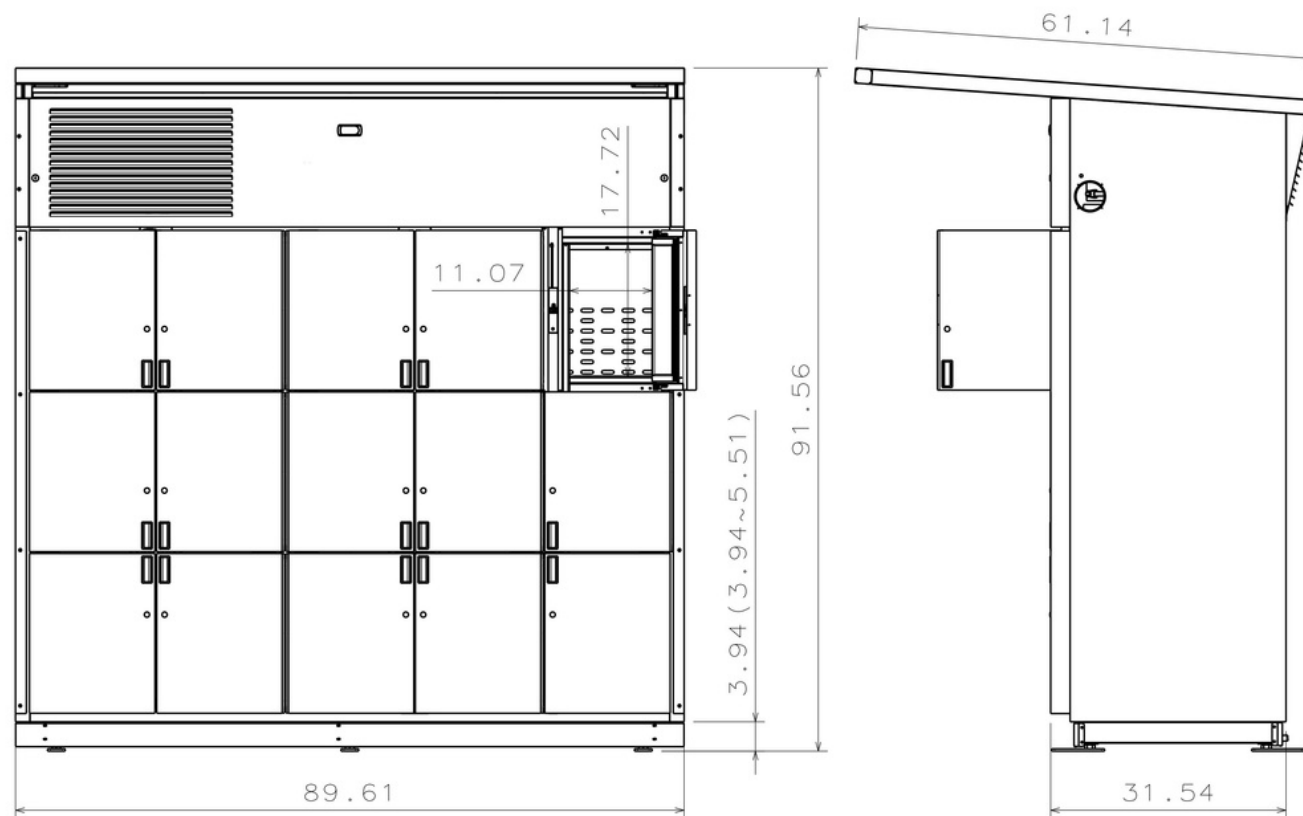
## LARGE

### Dimensions and Weight

Width	89.61"
Depth	31.54"
Height	
• Outdoor System	91.56"
• Indoor System	88.24"
Number of Compartments	15
Compartment Vol. (Cubic Ft.)	3.5 (min)
Net Weight (lbs)	1015 - 1135
Shelf Bearing Weight (lbs)	110

### Technical Data

Power	208-254V AC 50/60 Hz
Rated Current (Amps)	5.5 - 8.5 (max. at 220v)
Refrigerant	R290
Water Resistance	IP64
Certifications	UL. CE. RCM.
Rear-loading	No



### TEMPERATURE OPTIONS



CHILLER



CONTROLLED-  
AMBIENT



FREEZER



Most Popular

# 16 - DOOR

## LARGE

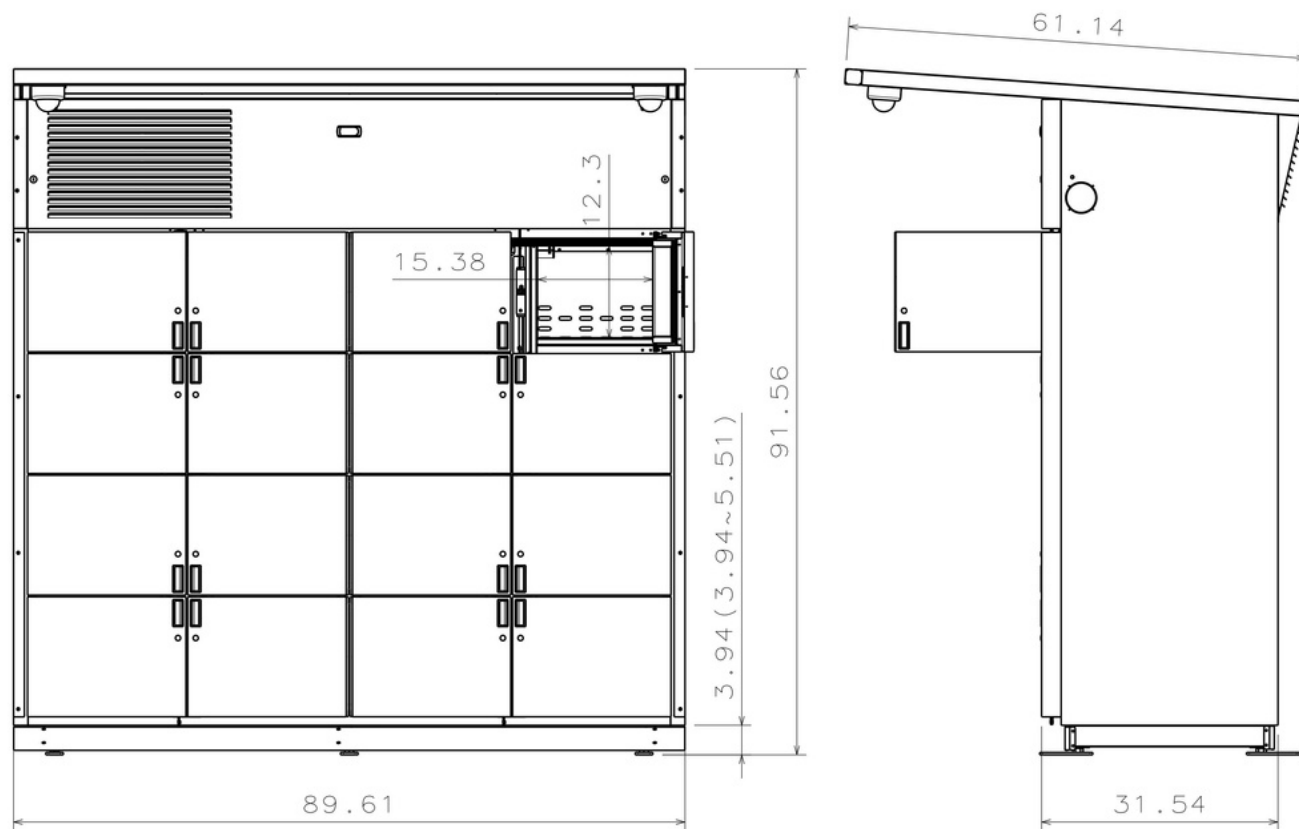
### Dimensions and Weight

Width	89.61"
Depth	31.54"
Height	
• Outdoor System	91.56"
• Indoor System	88.24"
Number of Compartments	16
Compartment Vol. (Cubic Ft.)	3.2 (min)
Net Weight (lbs)	1015 - 1135
Shelf Bearing Weight (lbs)	110

### Technical Data

Power	208-254V AC 50/60 Hz
Rated Current (Amps)	5.5 - 8.5 (max. at 220v)
Refrigerant	R290
Water Resistance	IP64
Certifications	UL. CE. RCM.
Rear-loading	Yes

**Flexible 16-Door Module Option:** Choose between our single-temperature or dual-temperature 16-door models. The dual-temp option features 8 controlled-ambient/chiller compartments and 8 freezer compartments, adapting to a variety of storage needs.



### TEMPERATURE OPTIONS



CONTROLLED-  
AMBIENT



CHILLER



FREEZER



HEATED

# 30 - DOOR

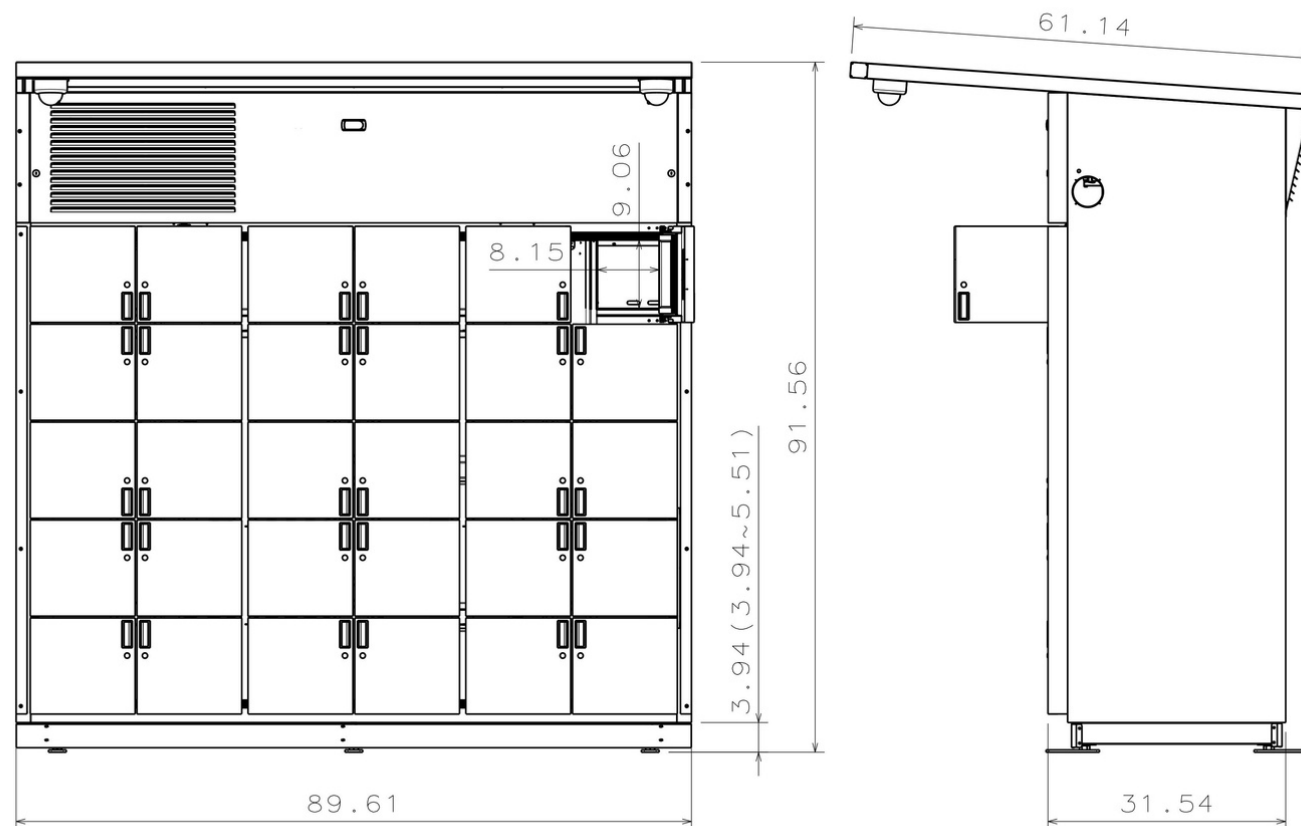
## LARGE

### Dimensions and Weight

Width	89.61"
Depth	31.54"
Height	
• Outdoor System	91.56"
• Indoor System	88.24"
Number of Compartments	30
Compartment Vol. (Cubic Ft.)	1.45 (min)
Net Weight (lbs)	1015 - 1215
Shelf Bearing Weight (lbs)	110

### Technical Data

Power	208-254V AC 50/60 Hz
Rated Current (Amps)	5.5 - 8.5 (max. at 220v)
Refrigerant	R290
Water Resistance	IP64
Certifications	UL. CE. RCM.
Rear-loading	No



### TEMPERATURE OPTIONS



CONTROLLED-  
AMBIENT



CHILLER



FREEZER



HEATED

# TRUSTED GLOBALLY

TESCO

coles



JPMORGAN  
CHASE & CO.

FRESH<sup>ST.</sup>  
MARKET

rohlik  
.CZ



sobey's



GLEANERS

HealthLinc  
YOUR COMMUNITY HEALTH CENTER®

mid-ohio food  
collective

WE'RE NOT JUST  
BUILDING LOCKERS,  
WE'RE CRAFTING PEACE  
OF MIND.

“Working with Click n Collect is amazing. They are true experts at what they do, fast and professional. They have truly managed to leverage our physical stores in a digital era. We are looking forward to continue growing our Click and Collect offering with Click n Collect.”

- Mark Hutchinson, TESCO



**Click n Collect**  
Reinventing click-and-collect