



CONNECTED COMMUNITY INNOVATIONS

Community Access Sponsorship Program

A COMMUNITY-FIRST MODEL FOR EXPANDING ACCESS TO
ESSENTIAL SERVICES

Why Sponsorship Matters Now

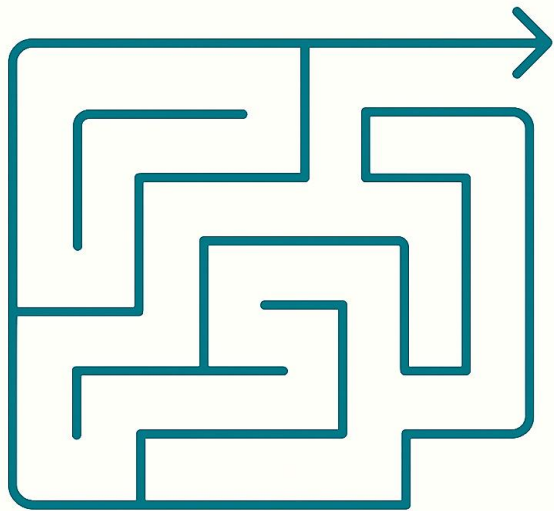
Communities today face a widening gap between the essential services people need and the information available to help them access those services. Residents often navigate fragmented, outdated, or inconsistent resources when seeking shelter, food, hygiene, transportation, or health support. Frontline teams feel this gap as well, spending time answering the same questions instead of focusing on higher-acuity needs.

A sponsored Community Access kiosk provides a stable, trusted, multilingual point of guidance inside a familiar public space. By offering accurate, real-time information in one simple place, sponsorship directly removes friction for residents, strengthens the work of frontline teams, and ensures critical service information is available even when staff are not.

Sponsorship accelerates the creation of a reliable, community-wide access layer, one that is consistent, equitable, and built around dignity. Each sponsored kiosk becomes part of an emerging network that helps people take the first step toward help more easily and confidently.



The Access Gap



Communities rely on a wide network of service providers, public, nonprofit, and community-based, to support residents seeking essential resources. Yet the information needed to navigate these services is often fragmented, inconsistent, or difficult to access. People must rely on word of mouth, outdated flyers, long wait lines, or staff availability to understand where to go or what is open.

This gap places pressure on both sides: residents spend valuable time trying to locate the right resource, while frontline teams spend significant energy answering repetitive questions instead of focusing on higher-priority support. Without a clear, trusted, and up-to-date access point, communities lose efficiency, and residents lose time, clarity, and stability.

A unified access point, placed where people already go, helps reduce friction, improves wayfinding, and creates a more reliable starting point for navigating essential services across the community.

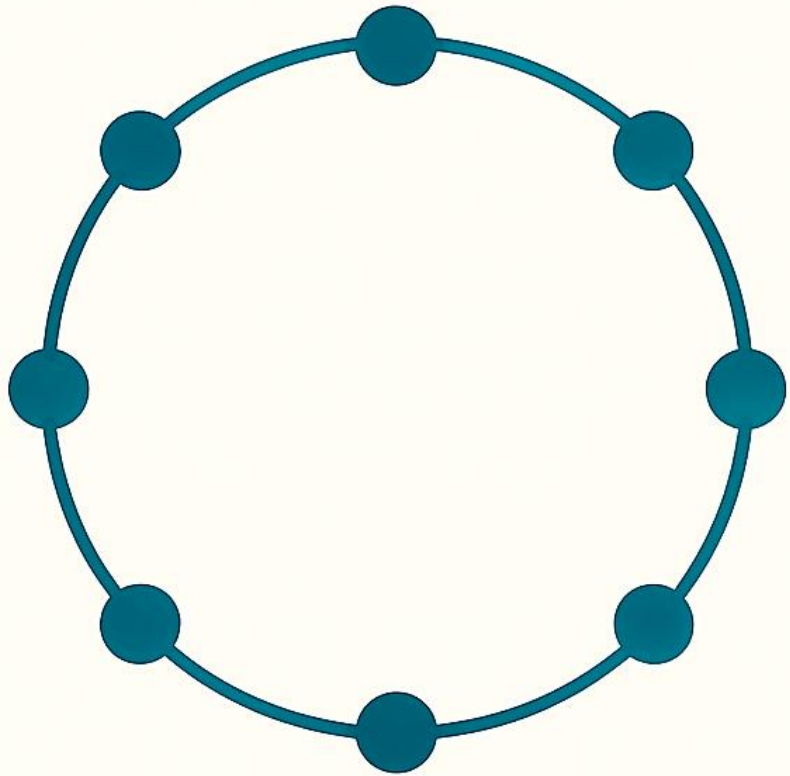
What Sponsorship Makes Possible

Sponsorship enables communities to establish trusted public access points where residents can quickly find clear, consistent, and up-to-date information about essential local services. By supporting the placement and operation of these kiosks, sponsors help reduce friction for individuals seeking help, while strengthening the capacity of local organizations to communicate what they offer.

Each sponsored site becomes a reliable starting point for navigating resources from daily needs to longer-term support. The kiosk provides clear guidance in multiple languages, organizes complex information into a simple experience, and ensures residents can take the first step toward assistance with confidence and dignity.

As more kiosks are sponsored and placed across a community, a connected access layer begins to form creating a network of familiar, dependable locations where people know they can turn for guidance. Sponsorship accelerates this progress, helping communities broaden reach, strengthen equity, and build a more coordinated way for residents to understand and access services.





Community Engagement at Every Stage

Each sponsored site is supported by a consistent community engagement process designed to ensure that information is accurate, accessible, and reflective of local needs. This work includes listening to community partners, gathering input from frontline teams, validating clarity and accessibility, and maintaining a steady feedback loop as services evolve.

By integrating community engagement into every deployment, sponsors help strengthen a shared public access layer that truly responds to how people move through their environment. This ensures that the information presented at each kiosk remains current, culturally aware, and aligned with the realities of daily service navigation.

Community engagement is embedded across all sponsorship tiers. It is not an add-on; it is part of how CCI ensures each installed kiosk becomes a trusted, familiar resource within the spaces people already use.

Sponsorship Tiers at a Glance

Tier	Sponsorship Amount	Sponsored Access Points	Recognition Included
Bronze	\$25,000	1 kiosk	Logo on kiosk panel, quarterly snapshot
Silver	\$50,000	2 kiosks	All Bronze benefits + in-app rotating slide; site signage
Platinum	\$75,000	3 kiosks	All Silver benefits + multi-site visibility; annual briefing
Custom	\$100,000+	4+ kiosks or specialized scope	Tailored visibility + optional PR

CCI's sponsorship program is designed to scale community access in a clear and practical way. Each tier represents a meaningful expansion of local access points starting with one kiosk and building toward a connected cluster that strengthens visibility, reach, and impact across community spaces.

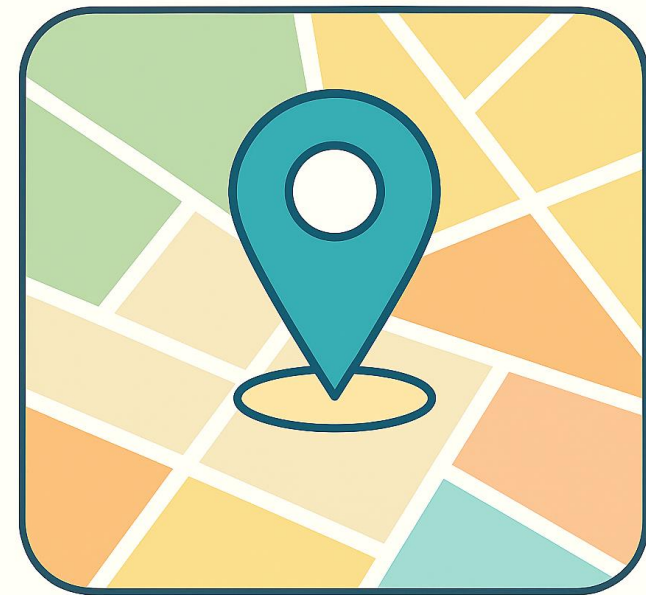
Our approach keeps the experience simple for sponsors while ensuring every contribution directly supports the placement, operation, and stewardship of public-facing access points. Each tier includes the same commitment to accuracy, accessibility, community engagement, and ongoing support, differing only in the number of kiosks sponsored and the scope of visibility provided.

Bronze Sponsorship — \$25,000

Bronze sponsorship establishes a single public access point in a trusted community location. This tier supports the placement of one kiosk that provides clear, consistent, and multilingual guidance to essential local services. Positioned within familiar public spaces, the kiosk becomes a dependable starting point for residents seeking nearby resources.

Bronze sponsors help introduce a reliable, recognizable place for people to begin their search for support. This first access point reduces friction for individuals navigating services, eases pressure on frontline teams, and strengthens the overall clarity of community information.

Each Bronze sponsorship also includes ongoing content stewardship, accessibility review, and regular engagement with community partners to ensure that information remains accurate and aligned with local needs.



Silver Sponsorship — \$50,000

A Silver sponsorship extends community access by supporting two public-facing kiosks placed in locations where they can have the greatest impact. With two access points operating in parallel, communities gain broader coverage, increased visibility, and more opportunities for residents to find reliable, multilingual guidance close to where they already are.

This tier strengthens the overall access network by ensuring that information is not limited to a single site. Instead, it becomes available in multiple public settings, improving convenience for residents and reducing pressure on frontline teams across more than one location.

Silver sponsors also receive enhanced visibility and expanded reporting that reflects usage across both sites. Each kiosk benefits from ongoing content stewardship, accessibility review, and coordinated community engagement to ensure that information remains relevant and responsive to local needs.



Platinum Sponsorship — \$75,000

A Platinum sponsorship supports three public access points across multiple community locations, creating a broader, more visible network of guidance and information. With three kiosks operating together, communities gain greater coverage, stronger consistency, and more equitable access to essential local services.

This tier serves as a flagship commitment that helps anchor a community-wide access layer. The presence of multiple access points ensures that residents can find reliable, multilingual guidance wherever they are, whether near a library, transit area, community center, or other public setting.

Platinum sponsors receive the highest level of visibility and insight across the network of sponsored sites, including consolidated impact reporting and opportunities for expanded recognition. Each access point receives ongoing stewardship, accessibility validation, and community engagement to ensure that information remains accurate, culturally responsive, and aligned with evolving local needs.



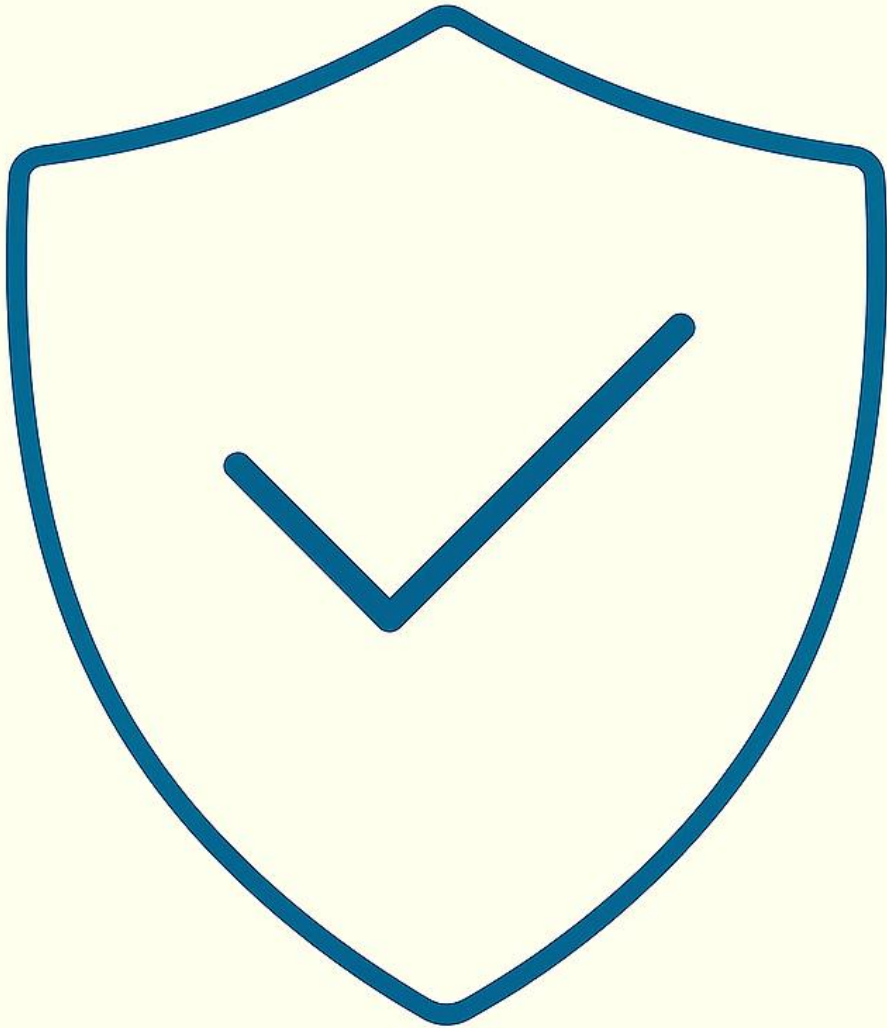
Custom Sponsorship — \$100,000+

The Custom tier is designed for partners seeking to make a broader or more specialized impact across the community. This level supports four or more access points or can be shaped around unique goals such as multi-site expansion, concentrated deployments in high-need areas, or enhanced visibility across a larger geographic footprint.

Custom sponsors play a key role in accelerating community-wide access by helping build a larger, more connected network of public information points. This tier also enables deeper collaboration, including tailored reporting, expanded recognition opportunities, and the ability to align deployments with specific community initiatives or corporate social responsibility priorities.

CCI works closely with Custom sponsors to develop an approach that reflects the scale of their commitment while ensuring that all deployments remain consistent with CCI's standards for accessibility, neutrality, and dignity-centered design.





Impact Reporting & Insights

Each sponsorship includes access to clear, privacy-first reporting that highlights how sponsored access points are being used across the community. These insights focus on overall activity, community needs, and patterns of engagement without collecting or storing any personal data.

Impact reports summarize high-level trends such as the types of services people are searching for, the most commonly accessed categories, the languages used, and general engagement patterns across sponsored locations. These insights help sponsors and community partners better understand how public access points are serving residents and where additional support may be beneficial.

All reporting is designed with strict privacy protections. No personally identifiable information is collected, no individual activity is tracked, and no images or biometric data are stored. Reports focus solely on aggregated, anonymized trends that help strengthen community planning and transparency.

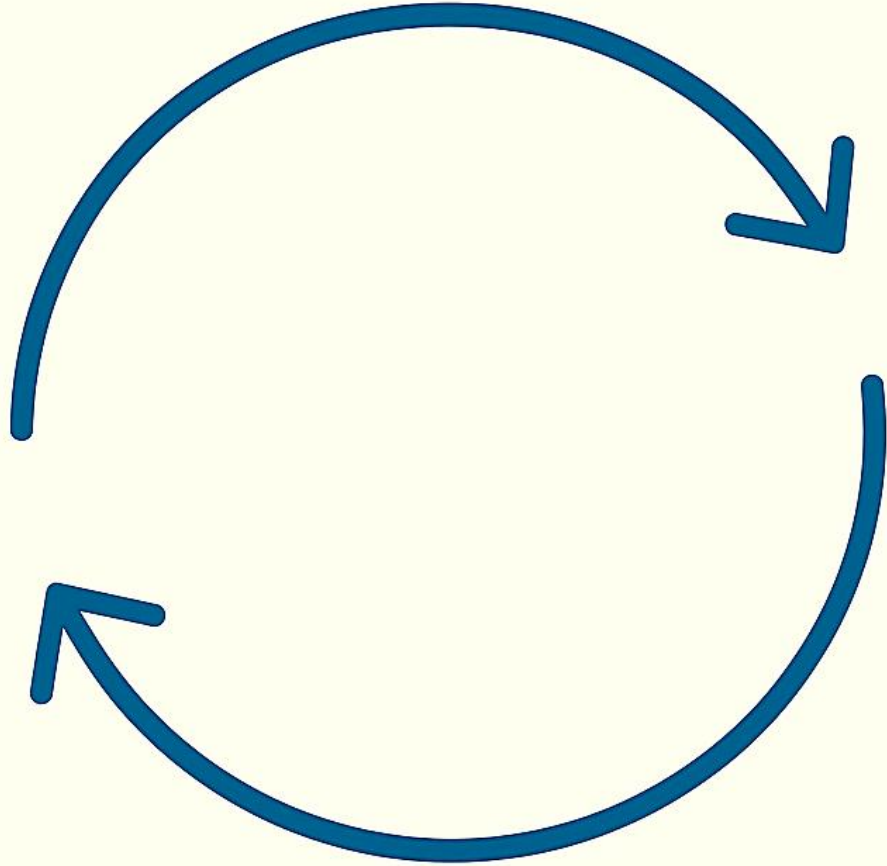
Placement Context

Sponsored access points are placed in trusted, community-centered environments where people naturally go for information, connection, and support. These locations may include libraries, community centers, day centers, public agencies, or other spaces that serve as consistent and welcoming touchpoints for residents.

Each site is selected in collaboration with local partners to ensure the access point is easy to find, safe to use, and well aligned with the rhythms of the surrounding community. This approach helps maximize visibility, reach, and the usefulness of the information provided.

Placement may involve indoor or outdoor locations depending on community goals and site readiness. Regardless of where access points are installed, every deployment includes the same commitment to accessibility, dignity, and clarity. Placement (indoor/outdoor) and operational configuration are finalized in the Deployment & Bundles plan for each site.





Funding Pathways

CCI's sponsorship program supports both one-time contributions and structured funding approaches to meet the needs of diverse organizations. A one-time sponsorship fully funds the deployment of the sponsored access point(s) and includes the first year of operations, ensuring that each site launches with stability and clear community impact.

After the first year, sponsors may elect to renew their support, or the site may be sustained through CCI's broader funding efforts, which include grants, donations, multi-sponsor contributions, and community partnerships. This blended sustainability model ensures that sponsored access points continue to serve residents even as funding sources evolve.

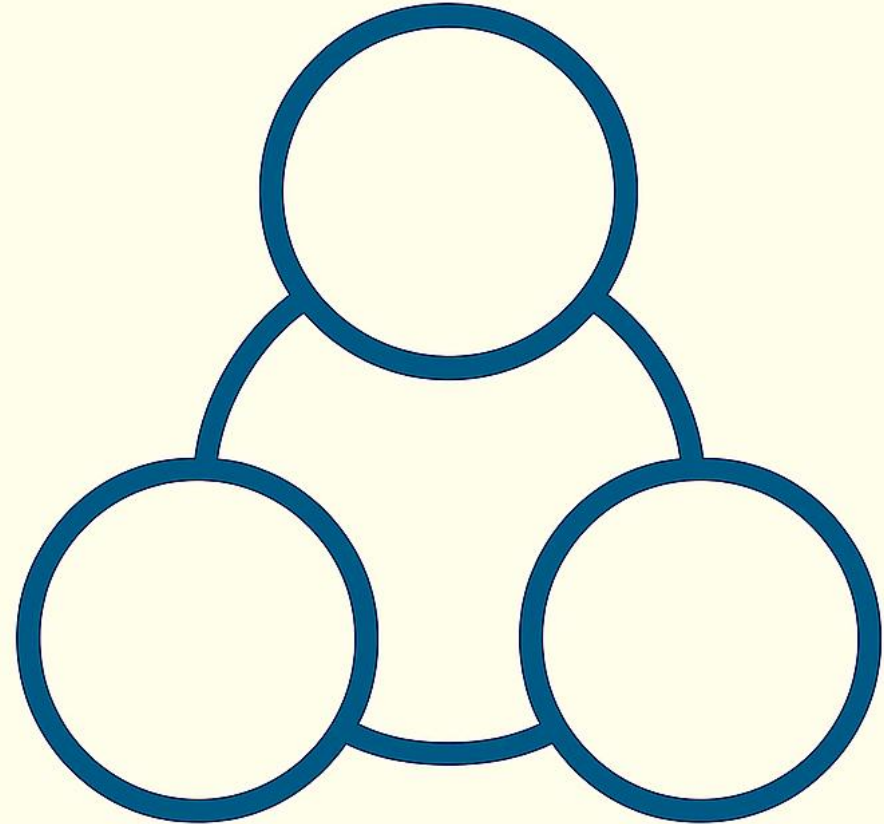
Sponsors may also choose a structured annual or monthly model, offering predictable budgeting and long-term planning flexibility. Regardless of the funding pathway, every sponsorship directly supports the placement, stewardship, and ongoing relevance of trusted public access points in community spaces.

A Shared Commitment to Community Access

Each sponsored access point represents more than a kiosk; it is a visible commitment to clarity, dignity, and stronger pathways to essential services. By supporting this program, sponsors help create a more connected community where residents can easily find the information they need, when they need it, in the places they already trust.

As additional access points are sponsored and placed across the community, a broader network emerges, one that reduces confusion, strengthens collaboration among local organizations, and brings greater consistency to the experience of seeking help.

Your support accelerates this work. Whether sponsoring a single access point or helping build a multi-site network, every contribution expands the reach of reliable guidance and reinforces a shared belief in equitable access for all community members.



THANK YOU



CONNECTED COMMUNITY
INNOVATIONS

John Ozkurt

Founder, Chairman of the Board and Executive Director

501(c)(3) Tax-Exempt Nonprofit | EIN: 33-4025046

+1 (203) 434-3334 | Seattle, WA 98107

john.ozkurt@connectedcommunityinnovations.org

<https://connectedcommunityinnovations.org>



Connecting People to Essential Services