

SPECIFICATIONS

Foundation & Structure
Reinforced Cement Concrete framework on footings with required strength as per the drawings given by Structural Engineers.

Walls
Molded light weight bricks walls with cement mortar with 9 inches thickness for outer walls & 4 inches thickness for internal walls. Internal & External walls Plastering two coats.

Painting
Internal walls and front Elevation painted with 2 coats of Asian Emulsion over wall care putty. External walls, corridors, balconies, compound wall and common areas painted with 2 coats of emulsion over a primary coat of white cement/cement primer.

Doors
Main door of teak wood frame with paneled shutter well polished for aesthetic look, bed rooms doors well seasoned Neem wood frame with factory made flush shutters, Toilet Doors PVC frame with water proof shutters.

Windows
UPVC windows with float glass and safety grills with powder coated fixtures. Mosquito mess for One shutter.

Hardware
Good quality aldrops, hinges & tower bolts wherever required.

Flooring
All rooms with 22"x 22" Vitrified tiles (worth Rs.50/- with laying charges) and balconies and corridors matt finish ceramic tiles.

Kitchen
Polish Granite stone platform with S.S. sink and glazed tiles dado of 3'0" above the platform.

Toilets
12" x 14" Ceramic tiles wall cladding up to Door height and antiskid best quality sanitary fitting and hot and cold well mixers, wash basin mixer (cost of tiles per box Rs.220/-)

Electrical
Concealed wiring with standard ISI quality copper wire. The Switches and switch boards are modular model of reputed make like Anchor.

Water Supply and Sanitar
Internal & External C.P.V.C Pipeline. The outlet sanitary pipes for all the toilets and utilities shall be PVC quality pipes of Prince/Ashirwad etc., under ground sump for municipal/bore water.

Lift
6 persons lift of standard quality shall be provided.

Generator
Generator of reputed make shall be provided for emergency power backup to lift, Water supply & common areas lighting and power to two light points, two fan points for each flat.

A Project by

RAAMO
CONSTRUCTIONS
WE BUILD TRUST

LUXURY 3BHK APARTMENTS
@ KONKAPALLI, AMALAPURAM

To **CREATE** only
the Best **FOR YOU**


VARADA TOWERS
V S N MURTHY RESIDENCY



SUBANTAS MEDIA
9866 405 444

OFFICE ADDRESS

RAAMO
CONSTRUCTIONS
WE BUILD TRUST

Door No. 1-149, Tanumalla Village,
Kajuluru Mandal,
East Godavari District, A.P.
Contact : 9866579424, 9440210484.

SITE ADDRESS

Konkapalli Village, Peruru Gram Panchayat,
Amalapuram Mandal, East Godavari District,
A.P.
Contact : 9866579424, 9440210484.

ARCHITECTS

DESIGNS

Vishakapatnam

Contact : 9849525125

NOTE : THE SPECIFICATIONS IS ONLY A CONCEPTUAL PRESENTATION AND NOT A LEGAL OFFERING. THE BUILDER CANNOT BE HELD FOR MAKING ANY CHANGES ALTERATION DONE IN GOOD FAITH.

SOUTH ROAD

ISOMETRIC VIEWS

1350 Sft



1350 Sft

1350 Sft



1350 Sft

1350 Sft



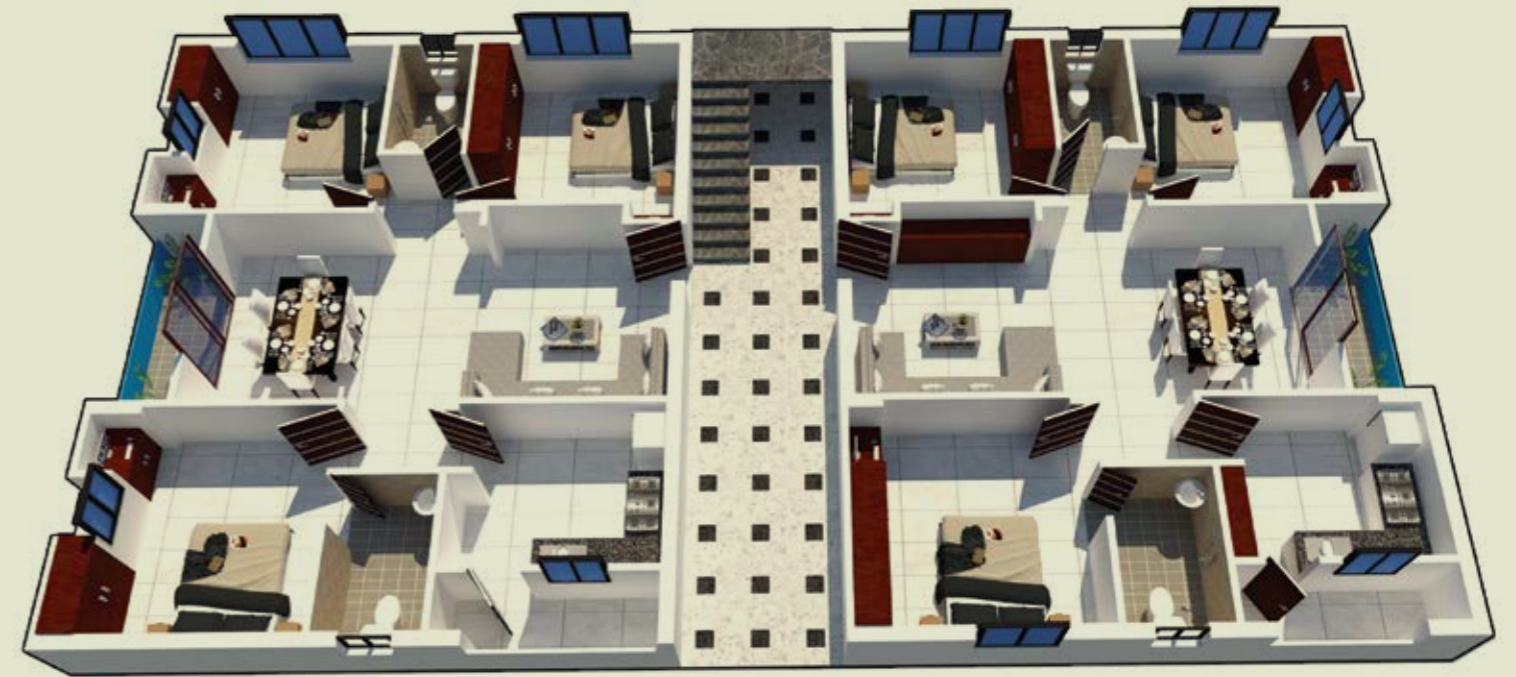
1350 Sft

NORTH ROAD



8'0" WIDE CORRIDOR

TYPICAL FLOOR PLAN



Project highlights:

- 100% vastu
- All 3BHK flats (East & West)
- No common walls
- Earth quake resistance
- Generator backup for common areas.

