

# UNDERBERG REGENERATION INITIATIVE





PHASE 1:

PROJECT  
OVERVIEW

# Proposed Strategy

- Imagine Charity has available land and is willing to donate it for the upliftment of the community.
- An invitation is open to different players to take ownership of the business side of the initiative.
- The purpose of BYOH's strategy is to prepare our youth for a better future, enhancing self-empowerment and reducing unemployment, thus their focus is on The Vocational Training School and a High School.
- The land has been earmarked for different initiatives aimed at empowering the community by setting up enterprises and other projects beneficial to the community.

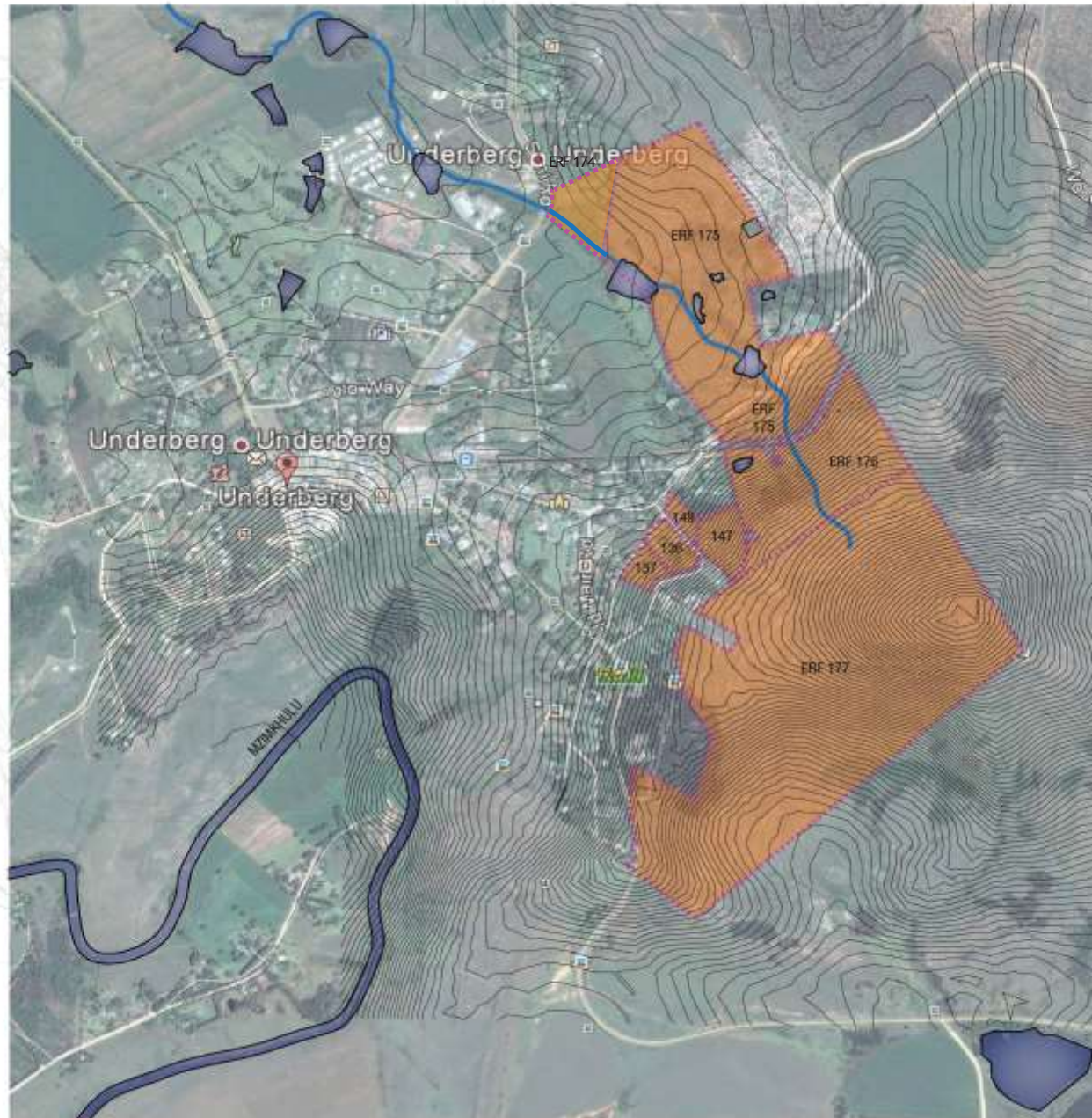
# LOCALITY MAP:

Underberg - KZN / RSA : Latitude:  $-29^{\circ} 46' 59.99''$  S

Longitude:  $29^{\circ} 29' 59.99''$  E



# CONTOUR MAP: Underberg - KZN / RSA

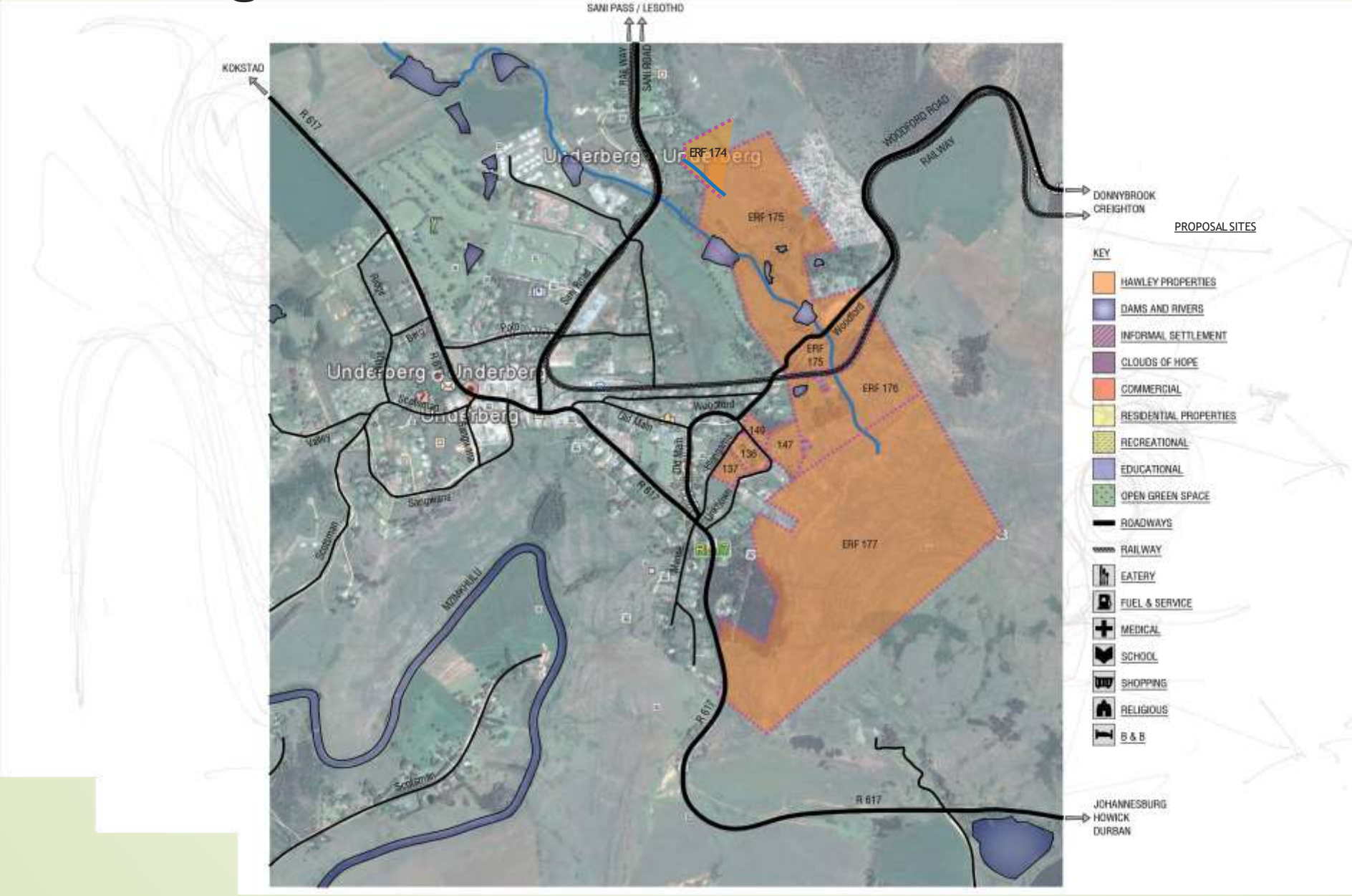


## PROPOSAL SITES

-  HAWLEY PROPERTIES
-  DAMS AND RIVERS
-  INFORMAL SETTLEMENT
-  CLOUDS OF HOPE
-  COMMERCIAL
-  RESIDENTIAL PROPERTIES
-  RECREATIONAL
-  EDUCATIONAL
-  OPEN GREEN SPACE
-  ROADWAYS
-  RAILWAY
-  EATERY
-  FUEL & SERVICE
-  MEDICAL
-  SCHOOL
-  SHOPPING
-  RELIGIOUS
-  B & B

# ROAD & RAIL:

## Underberg - KZN / RSA



# LOCAL ACTIVITIES

## Sani Pass



## Fishing and wildlife



## Sports and recreation



## Local attractions

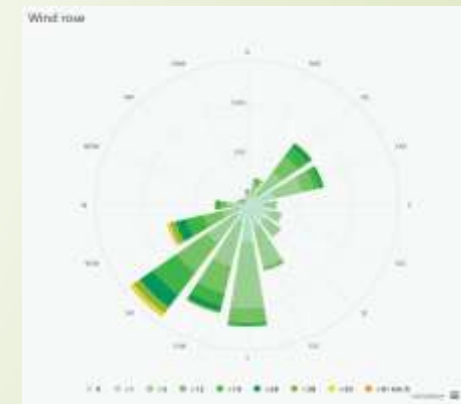
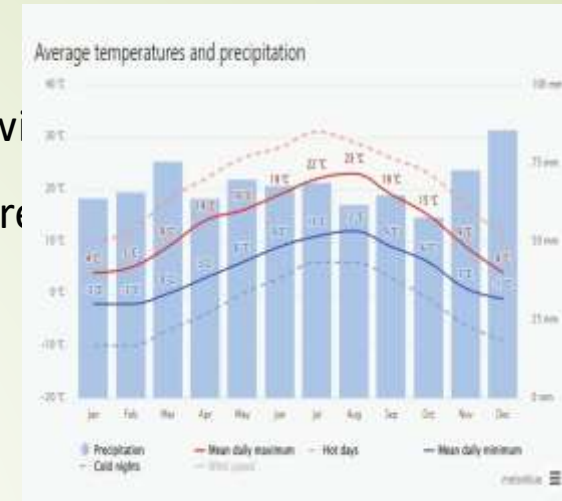


# REGENERATION SITE POSIBILITIES

**Wind direction** is predominantly SW. This is parallel to the contours and therefore will enhance cross ventilation - improving the air quality passively. Use courtyards to create wind buffers for winter. Separate classroom blocks to improve ventilation between buildings.

**Precipitation & Hydrology is key** as this area experiences summer storms and high rainfall. During the storms, the watersheds create natural channels. Rainwater will be diverted and stored for use on site. Grey water will be recycled for landscaping. A reed bed filter will be incorporated into the site filtration system to manage and process water purification.

**Orientation of the site** drops toward the North-East. Building on the contours of the slope dictate north facing facades to take advantage of the sun path, slope/elevation, ventilation and views of the Drakensberg. Focus to be placed on insulation, cross ventilation, solar shading and natural light.





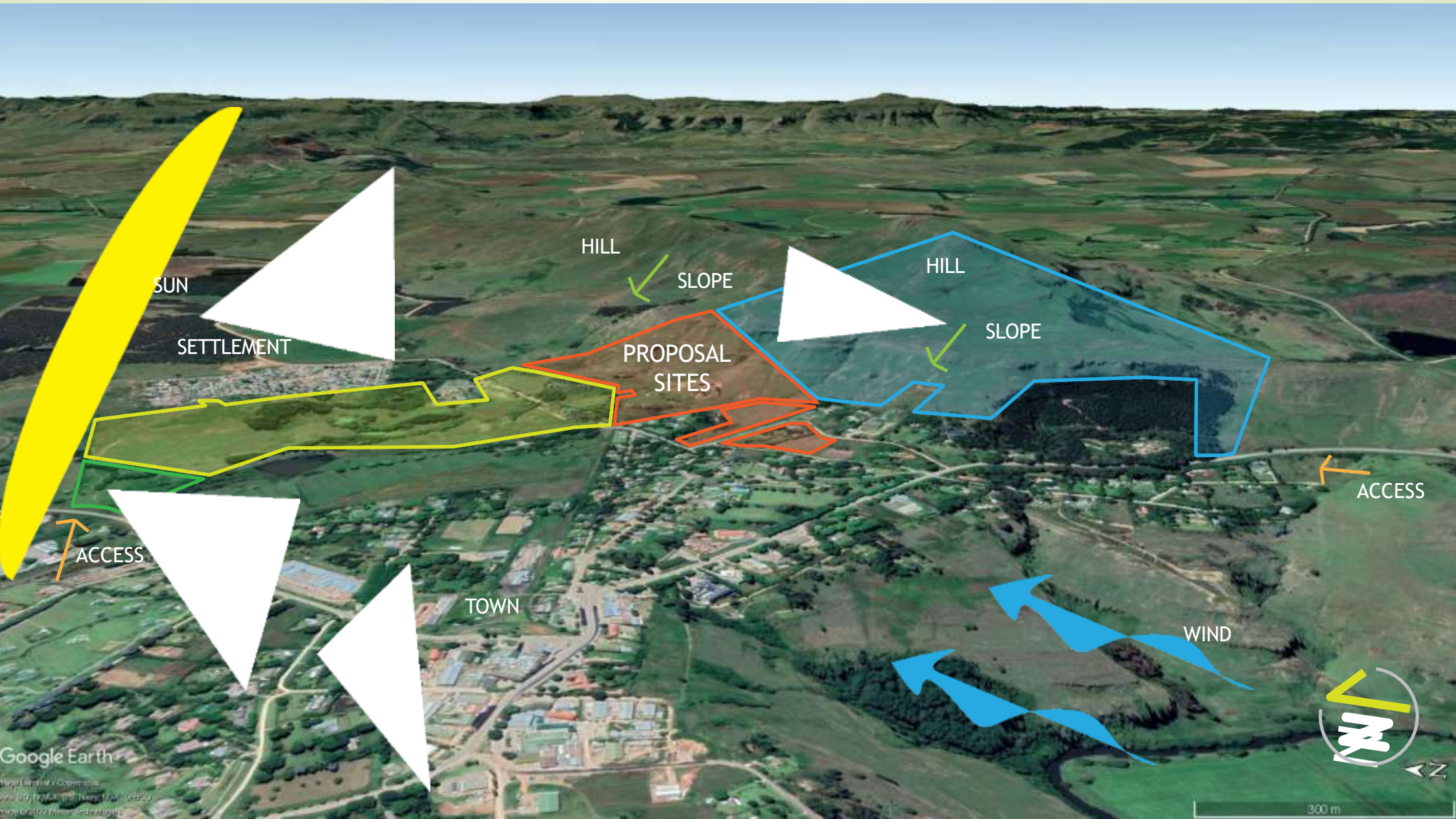
# PROPOSAL SITES: Ownership Diagram



Erf Number	Registered Owner
136	Yelwah Investments
137	Yelwah Investments
147	Yelwah Investments
149	Yelwah Investments
174	SIS Global Services
175	Stuart Hawley Rainbow Foundation
176	Yelwah Investments
177	Hlokoma Echo Resort and Estate



# PROPOSAL SITES: Perspective View





# CONCEPT DESIGN: Education Zone 1/3

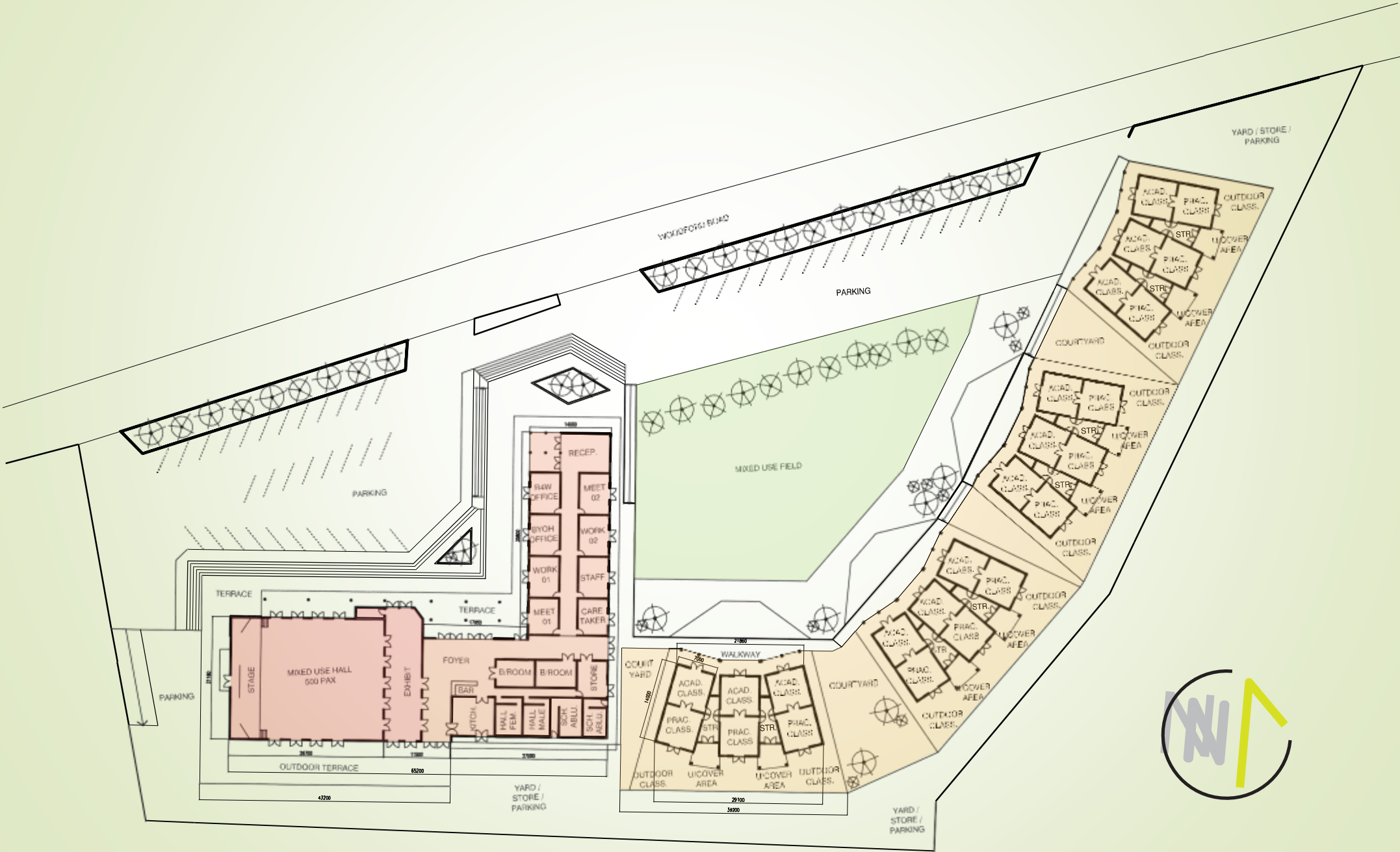


# ACTIVITY ZONES:

## Education / Residential : ERF 174 & 175



# TVET Plan



# THE CHALLENGES

## Tourism Decline



Underberg is one of South Africa's premier trout fly fishing destinations and gateway to the Southern Drakensberg

## Limited Income Generating Initiatives



Only 1 (one) major supermarket [Spar] suffering because of lower agricultural activities

## Education



No colleges close by to cater to the local community

## Economic Development



The community has limited incentives for middle- and high-income individuals to invest and settle in Underberg

## Infrastructure Growth



There is still a lot of the old infrastructure and not many new buildings and businesses being established

# THE SOLUTION

## Improved Educational Facilities



A Vocational Training School which caters to the locals

## Community Initiatives



Train locals on Aquaponics and other agricultural initiatives, which play a supportive role by providing sufficient affordable food and employment opportunities

## Tourism & Local Businesses



Establishing an Eco-Estate with a Respite Care Centre



# The TVET Concept

Technical and Vocational education is designed to make students “**work ready**”. It teaches skills and knowledge for the everyday skills and duties carried out in a particular field. Vocational education is classroom training combined with hands-on training, providing students with a complete understanding of concepts in their field and how to carry out the duties of their chosen trade. Students enrolled at the vocational school can be partially / fully subsidized with funding received from the private sector.

Educators, operations and maintenance to be funded completely by the Department of Education.

## **Multifunctional Hall**

This will be mainly utilized for larger events and can be rented out, ensuring revenue flow:

- Culture: Dance, Choir Practice, Concerts: Music events by schools, Art exhibitions, market fairs etc.
- Meetings: Youth Clubs, Information Meetings, Career and opportunity Days, etc.

Jobs are also created here. Management, technology, building services, cleaning, maintenance (partly by R4W workshop).

After initiation and start-up financing, this project can also be self-sustaining if it is well managed.

# The TVET Concept Cont.

## **READY4WORK Workshop**

The Ready4Work workshop is an essential part of the BE YOUR OWN HERO environment. Job-related practical learning units, job orientation directly on site in Underberg/Himeville. Direct experience transfer, qualification, talent search and triage in a fully equipped workshop and learning environment.

### **CRAFTSMANSHIP:**

- Carpenter
- Bricklayer
- Car mechanics
- Landscaping
- Cook
- Facility  
Manager
- Baker
- Farming  
technology
- Recycling  
Specialists

### **SERVICES:**

- Medical Services
- Caring Professions
- Tourism Service Staff
- Restaurant Service Staff
- Mobility Service
- Coaches / Moderators
- Sporttrainer / Community Trainer
- Computer Specialists
- Software Developer
- Environment Staff

# READY4WORK STRATEGY

Underberg is an administrative town in a dairy and cattle farming community in the Mzimkulu River valley of KwaZulu-Natal, South Africa. It is situated at the foot of the 1,904 m Hlogoma Peak in the foothills of the southern Drakensberg, KwaZulu-Natal.

Imagine Charity and Be Your Own Hero ("**BYOH**") are embarking on the Underberg Regeneration Initiative and Capacity Building program, to enable the Underberg community to rebuild itself. We are therefore committed to working with the community to identify and implement community-led training and initiatives.



Encompassing the components for a Sustainable Community alongside the building blocks for the Future Fund

# HOUSE OF EDUCATION

- The Education House is the heart of the BYOH.
- This will be managed in such a way that the already existing education and future education, training, and study opportunities can be adequately communicated, offered and organized.
- Fully equipped science and technology labs to ensure comprehensive mathematics, science and AI studies are offered.
- To ensure that all areas are adequately utilized, different areas / building services will be available. This will cover all the important functions and educational training of the future:
  - **Workspace:** There will be an area where young people will be able to pursue distance learning through BE YOUR OWN HERO scholarships - the Online Education Centre.
  - **READY4WORK Office:** Office and counselling center for all READY4WORK | South Africa offers.
  - **Meeting Area:** Appropriate, flexible rooms are offered for the various offerings, such as meetings, further education, assessments, qualifications and training.
  - **Functional Rooms:** Donation and material storage, toilets and "caretaker" space, cleaning supplies storage and general storage space.

# RESPIRE CENTRE

- The respite center is open to the entire community.
- Short-term assisted living allows families to take a short trip while their loved ones are cared for by trained caregivers who will assist families to restore balance in their lives. The caregivers will assist with eating meals, take medications on schedule, dress, bathe, exercise or play games outdoors.
- Adult Day Programs can be offered where families can take their loved ones for respite care for a few hours or the entire day. The day program can offer exercise, music classes, meals supervised by trained staff.



# OVERVIEW

There is an interlapping relationship amongst the various activities. Educational facilities bring more people to the area, which is more money and more tourism and ultimately, a regeneration of Underberg



Vocation  
al Training  
School &  
High  
School

**Model Farm**

Aquaponics, Eatery  
& Brewery

**Eco-Estate &  
Respite Centre**

Holiday Homes &  
Conferencing

# PHASE 2:

ADDITIONAL EDUCATIONAL  
POSSIBILITIES WITH  
SUSTAINABLE REVENUE  
STREAMS

# Activity Zones - Agriculture, Residential and Eco Zone: ERF 136 / 137 / 147 / 149 / 176 / 177





# AQUAPONICS

Aquaponics is a good production system that couples aquaculture (raising aquatic animals like fish, crayfish, snails etc. in tanks) with hydroponics (cultivating plants in water) whereby the nutrient-rich aquaculture water is fed to the growing plants.

➤ This is an opportunity to create employment and at the same time, contribute to the agricultural development within the community.

➤ **Benefits of Aquaponics:**

- Organic and nutritional benefits
- Food is grown all year round
- Reduces water usage
- Accelerated plant growth
- Two sustainable incomes
- Supports self-sufficient way of living

Deep Water Culture (raft) bed



Fish Tanks



Aggregate Bed (also a Bio-Filter)



# HOSPITALITY INDUSTRY

The hospitality industry is a broad category of fields within the service industry that includes lodging, food and drink service, event planning, theme parks, travel and tourism. It includes hotels, tourism agencies, restaurants and bars.



# MODEL FARM



- The Model Farm will also act as a training ground for students at the Vocational Training School who need to do their practicals
- Besides producing crops for resale, the Model Farm can also be used by tourists who have come to the area, and they get to have a “farm life” experience
- The Model Farm will also have an Eatery & Brewery which will contribute to the upliftment of the community by providing employment and generating income which will be beneficial to the local community

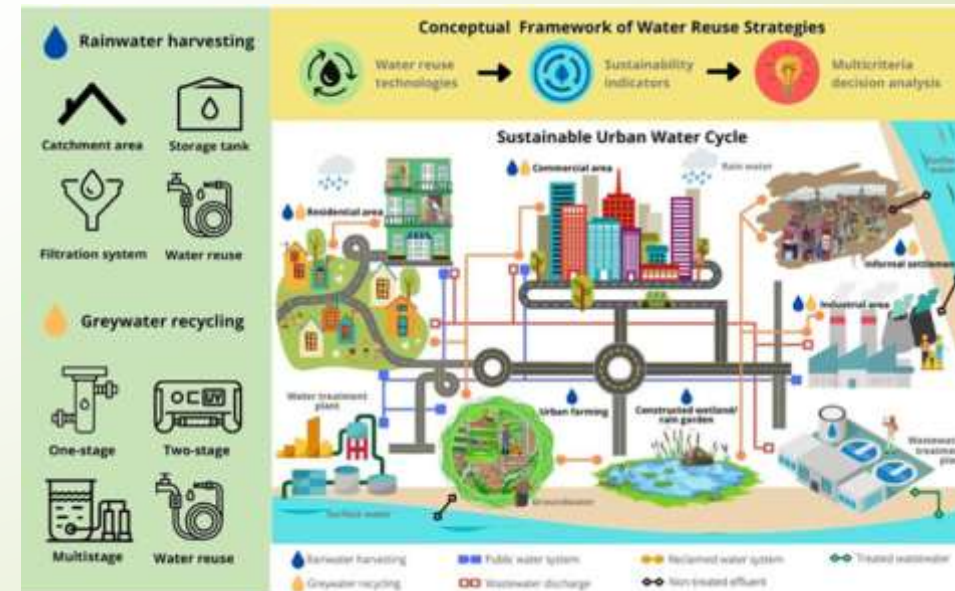
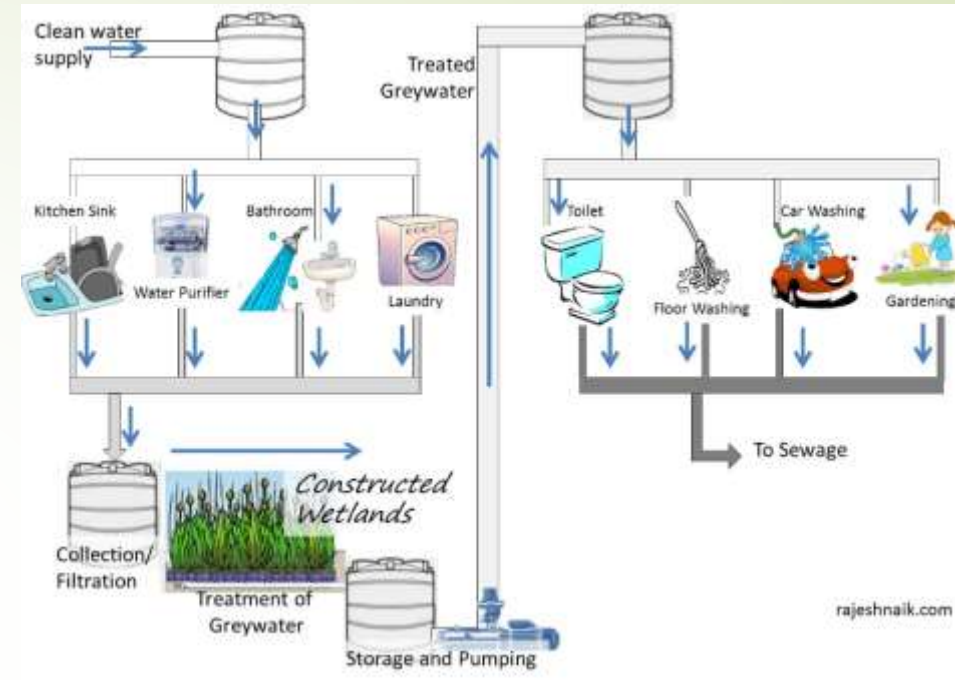
# PLASTIC WASTE RECYCLING

- Plastic waste collection can create additional income for the entire community.
- Some of the many benefits of recycling are the prevention of greenhouse gases (GHGs) and supporting local economies by creating jobs and tax revenue.
- Recycling programs can also help to improve water and air quality and are building blocks for sustainable growing communities.



# WATER RECYCLING

- With increased population growth and development, there is a need to critically look at alternative approaches to ensure water availability. Conventional groundwater and surface water sources are becoming increasingly vulnerable to anthropogenic, industrial and natural pollution.
- To resolve the problem, Underberg will look at harvesting rainwater, wastewater reuse and desalination.





THANK YOU