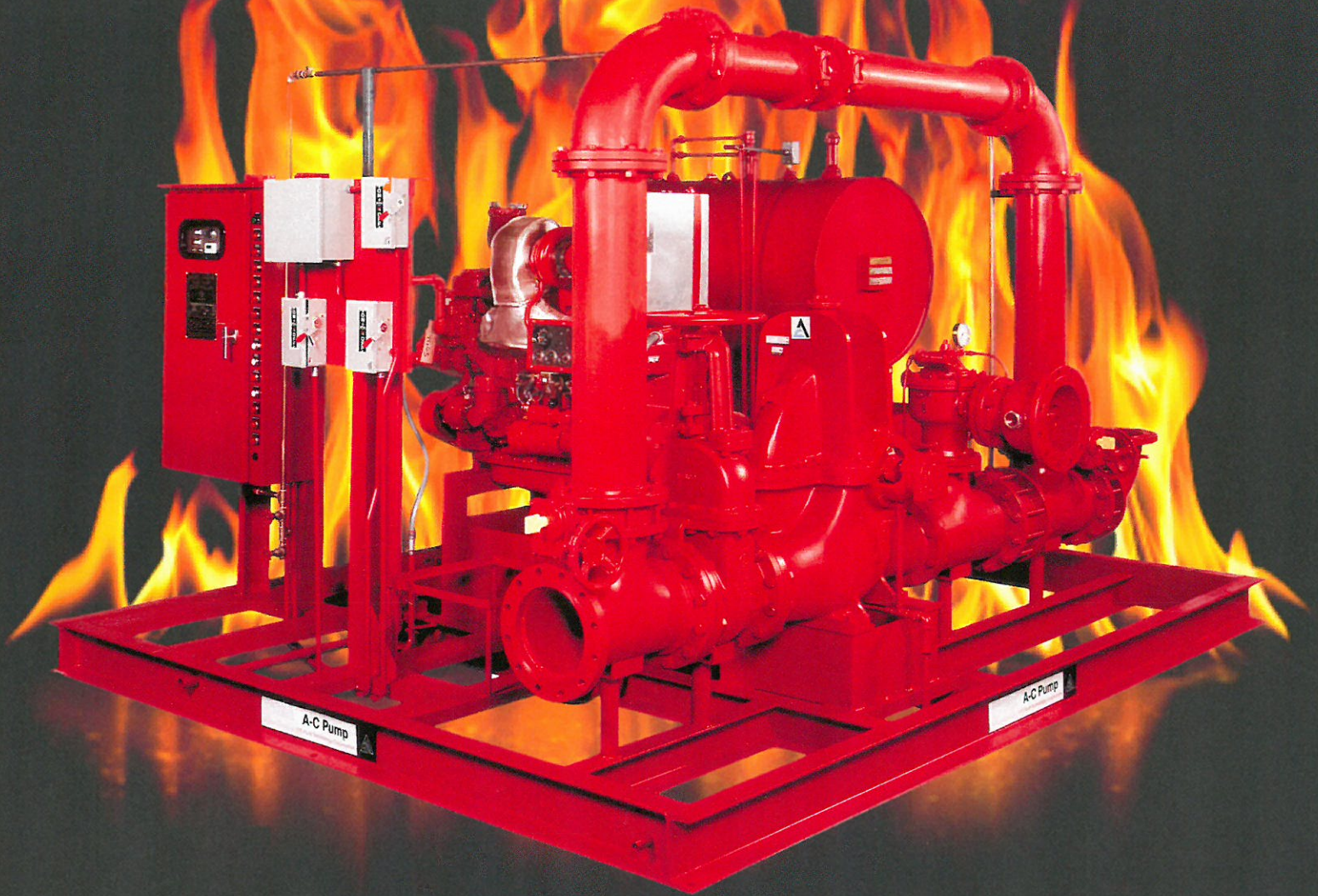


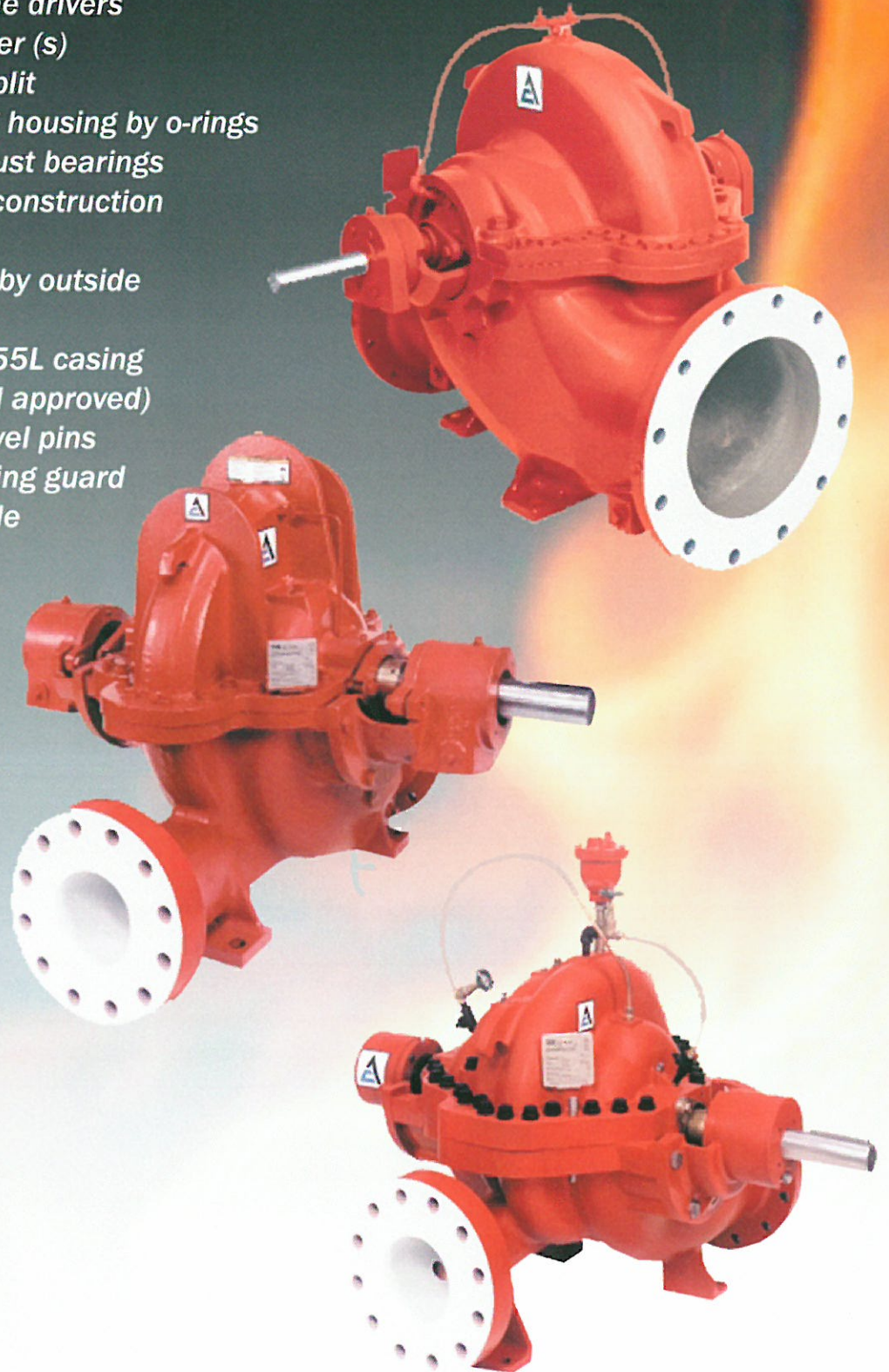
UNDERWOOD FIRE EQUIPMENT



We serve to save life and property

SPLIT CASE FIRE PUMPS

- UL listed and FM approved
- Capacities to 5000 gpm (18,925 l/min)
- Pressures to 640 psi (44.1 bar)
- Suction and discharge flanges are on a common centerline
- Electric motor or diesel engine drivers
- Dynamically balanced impeller (s)
- Anti-rotation pins at casing split
- Casing rings sealed to casing housing by o-rings
- Double-row outboard ball thrust bearings
- No snap rings used in pump construction
- Minimum bearing span
- Sleeves held in compression by outside sleeve nuts
- Supplied with Cla-Val model 55L casing relief valve (UL listed and FM approved)
- Jack screws and tapered dowel pins
- OSHA / ANSI approved coupling guard
- CW or CCW rotations available
- Compact design saves space



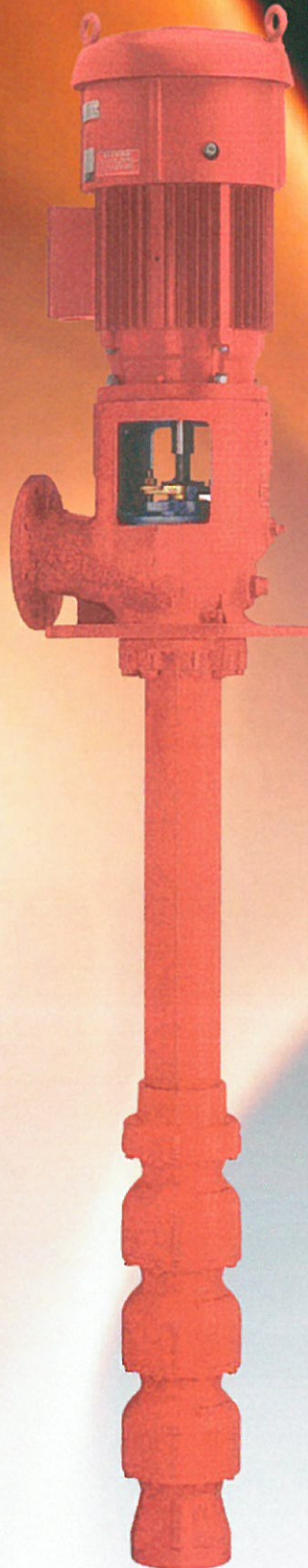
INLINE FIRE PUMPS

- UL listed and FM approved
- Capacities to 1500 gpm (5,678 l/min)
- Pressures to 167 psi (11.5 bar)
- Suction and discharge flanges are on a common centerline
- Suction and discharge flanges are of equal size
- Compact space saving design
- Dynamically balanced impeller
- Bearing free design
- Self venting (No air release required)
- One stuffing box cuts leakage
- No foundation or pads required
- Top pullout design
- No straight pipe required on suction side to meet NFPA #20 requirements
- Multi-position electrical junction box
- Built-in port for casing relief valve
- Supplied with Cla-Val model 55L casing relief valve (UL listed and FM approved)



VERTICAL TURBINE FIRE PUMPS

- UL listed and FM approved
- Capacities to 5000 gpm (18,925 l/min)
- Pressures 500 psi (34.4 bar)
- Required by NFPA #20 when operating under a static suction lift condition
- Electric motor or diesel engine drivers
- Dynamically balanced impellers
- Stainless steel line shaft and coupling (s)
- Open lineshaft design provides for product lubrication of the bearings
- Available in special materials of construction for salt water applications
- Provided with a bronze suction strainer
- Provided with an oversized air release valve

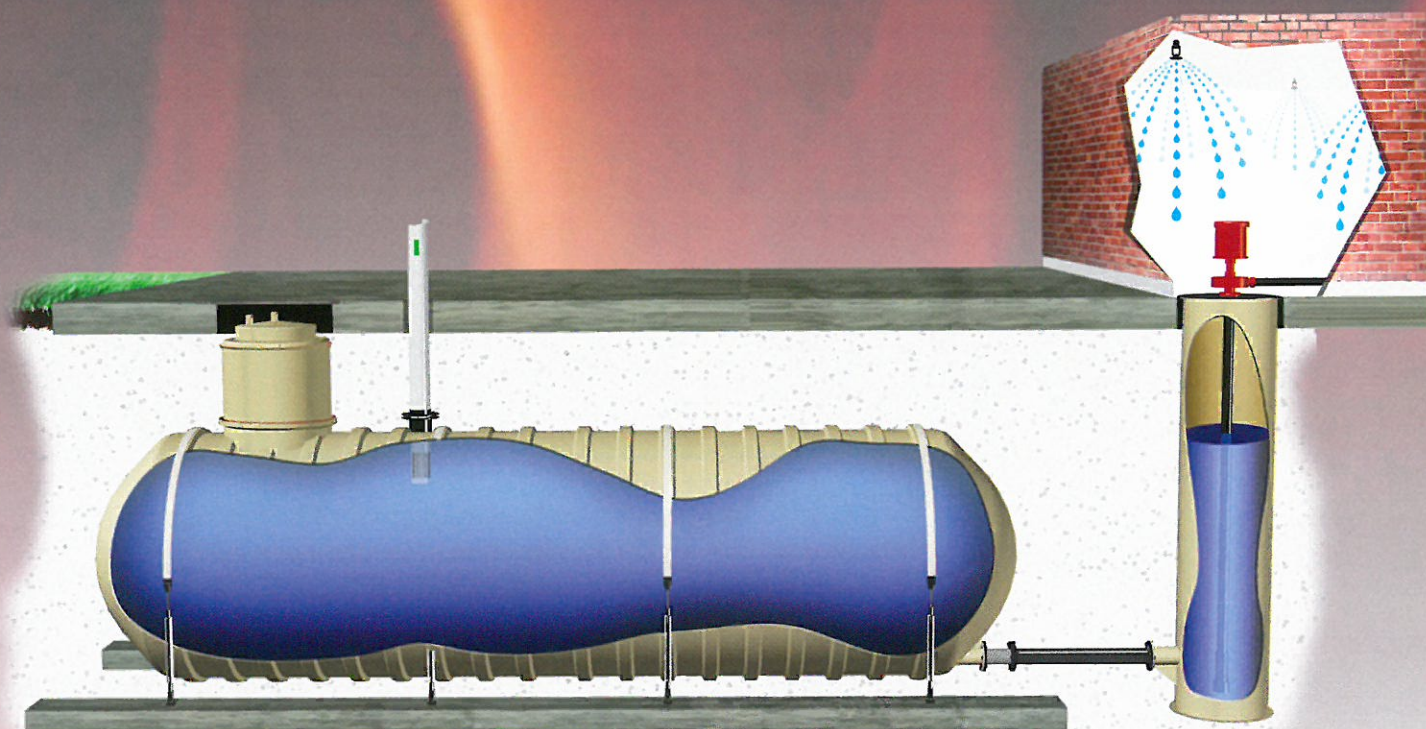


AC FIRE
PUMP



FIBERGLASS WATER STORAGE TANKS

- UL 1316 listed - Glass fiber reinforced plastic
- Meets or exceeds the requirements of ANSI / AWWA - D120
- NFPA #20 and NFPA #22 compliant
- Tanks will withstand surface HS-20 axle loads (32,000 lbs. / axle)
- Atmospheric pressure only; supplied with proper venting
- Supplied with 22" manway and cap (30" or 36" sizes optional)
- Supplied with gusseted tangential flanged bottom nozzle
- Flexible piping connectors available
- Automatic water level control systems
- Optional straps, turnbuckles, deadmen, ladders, level indicators and flanged or threaded connections



FIRE PUMP CONTROL PANELS

- UL listed and FM approved
- Reduced voltage starting available (Part winding, primary resistance, wye delta open, wye delta closed, soft start / soft stop and autotransformer types)
- Variable frequency drive (VFD) control panels available
- Automatic power transfer switches available
- UL 508 approved jockey pump control panels
- Remote alarm and low suction control panels



Firetrol[®]

TORNADO
TECH

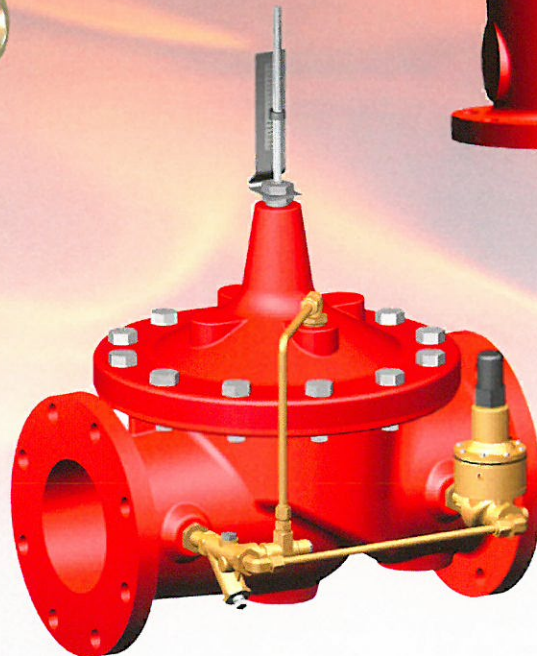
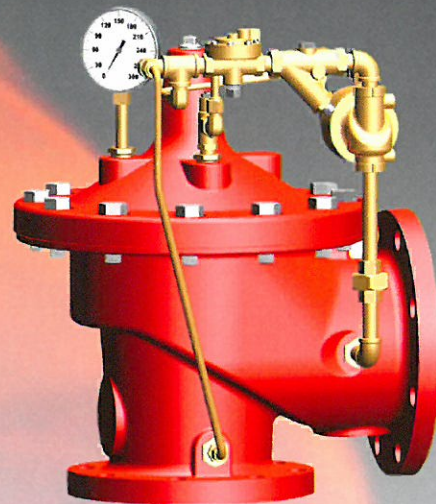
EATON

Metron

MASTER

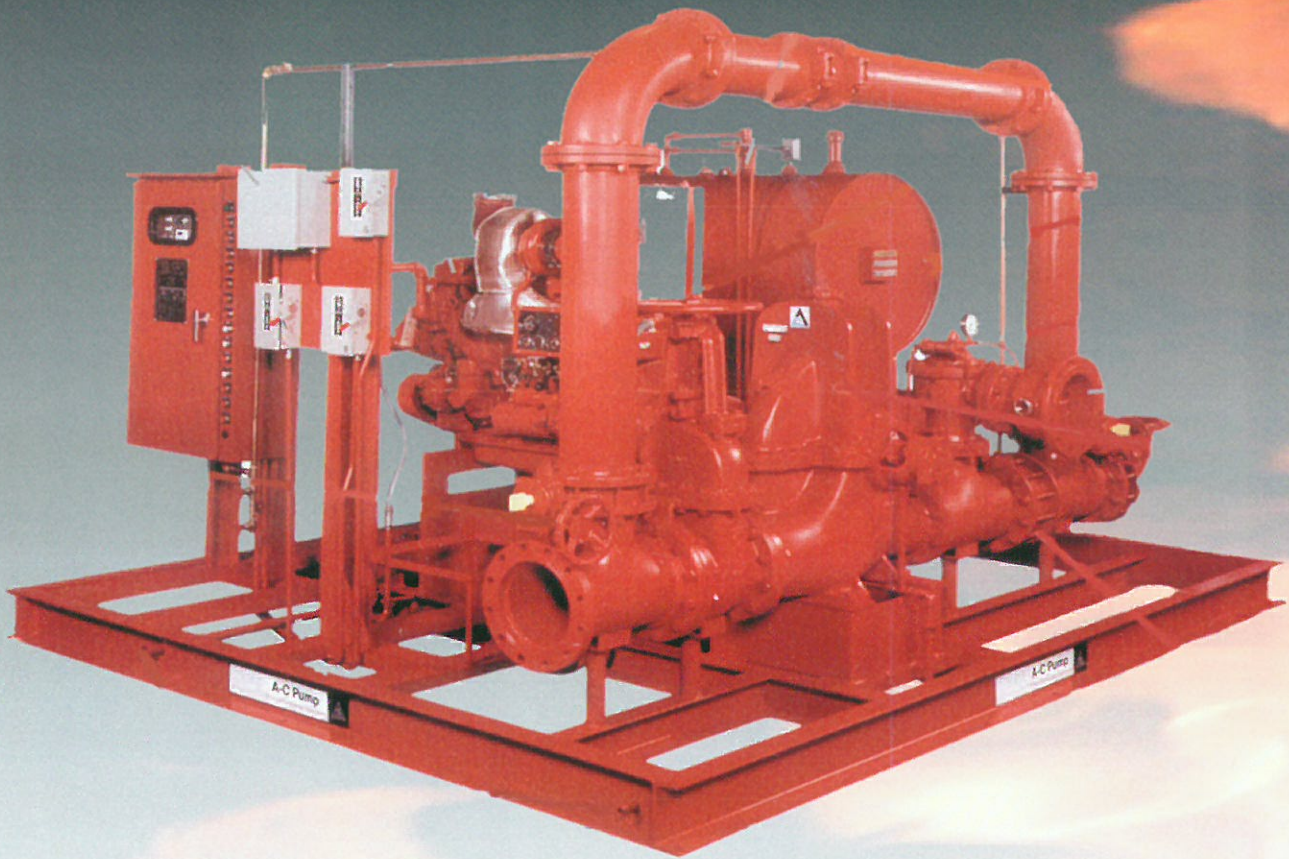
AUTOMATIC CONTROL VALVES

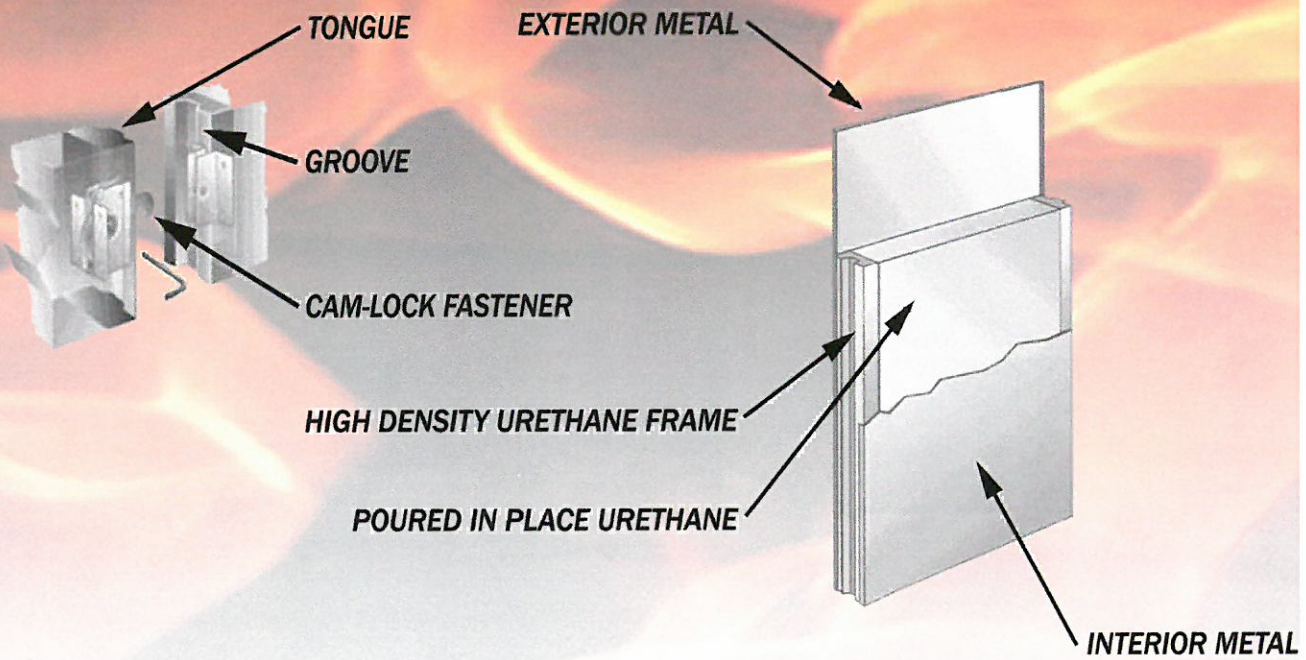
- UL listed and FM approved control valves
- Pressure relief, reducing and sustaining valves
- Deluge valves (Electric and pneumatic)
- Suction control valves
- Altitude tank fill valves
- Air release valves
- Hydrant valves
- UL listed fire pump casing relief valves



PREFABRICATED and PREPACKAGED SYSTEMS

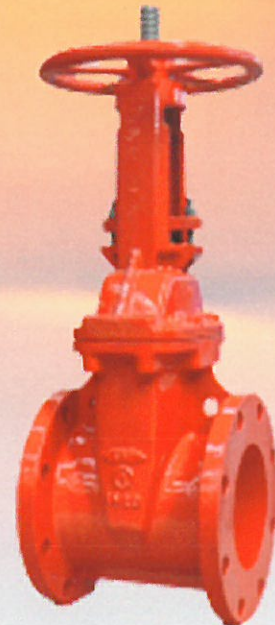
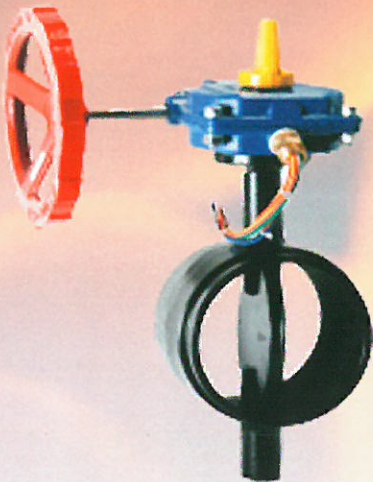
- *Single source responsibility*
- *Only UL listed and FM approved components*
- *NFPA #20 and NFPA #70 compliant*
- *Skid mounted or available with prefabricated enclosures*
- *AWS D1.1 and ASME section IX certified welding*
- *3rd party certified (ETL/C-ETL Listed systems)*
- *Performance and hydrostatically tested*
- *Seismic qualification tested*
- *International distribution with start up assistance*





UL / FM APPROVED FIRE VALVES FIRE FIGHTING and HOSE EQUIPMENT

- UL listed and FM approved OS&Y gate valves, grooved and wafer butterfly valves with tamper switches, grooved and flanged check valves, post indicator valves, and flexible sprinkler connectors
- UL listed and FM approved brass and equipment
- Fire hose, valves, hose cabinets and access panels
- Fire extinguishers
- Pressure reducing and floor control valves
- Fire departments inlet connections
- Fire pump test connections
- Hose monitors, nozzles and foam equipment
- Sprinkler and test equipment
- Hose adapters and lots more



ALEUM 



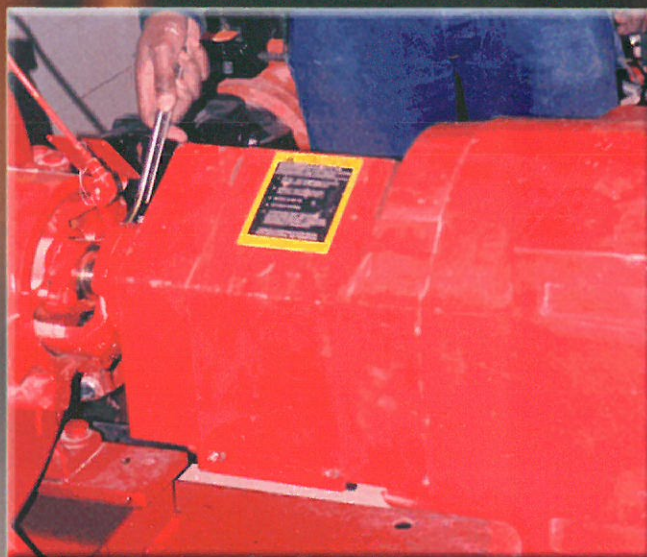
KEN - JO - MATIC PRESSURE PUMPS

- UL 508 listed components
- Capacities to 1.6 gpm (6 l/min)
- Pressures to 170 psi (11.7 bar)
- Built in pressure relief valve
- 1/2" brass union installed at the sensing line inlet connection for easy pressure switch maintenance
- 8" high pressure flexible inlet / outlet connections with 1/2" swivels
- Prewired control unit that is suitable for wall mounting
- 1/3 hp, 1725 rpm, 120 volt, 1 phase, ODP motor
- NEMA XII dust tight enclosure
- Field adjustable pressure switch with 10-300 psi range
- Great for use as a jockey pressure maintenance pump or in parallel with alarm check valves to avoid nuisance alarms



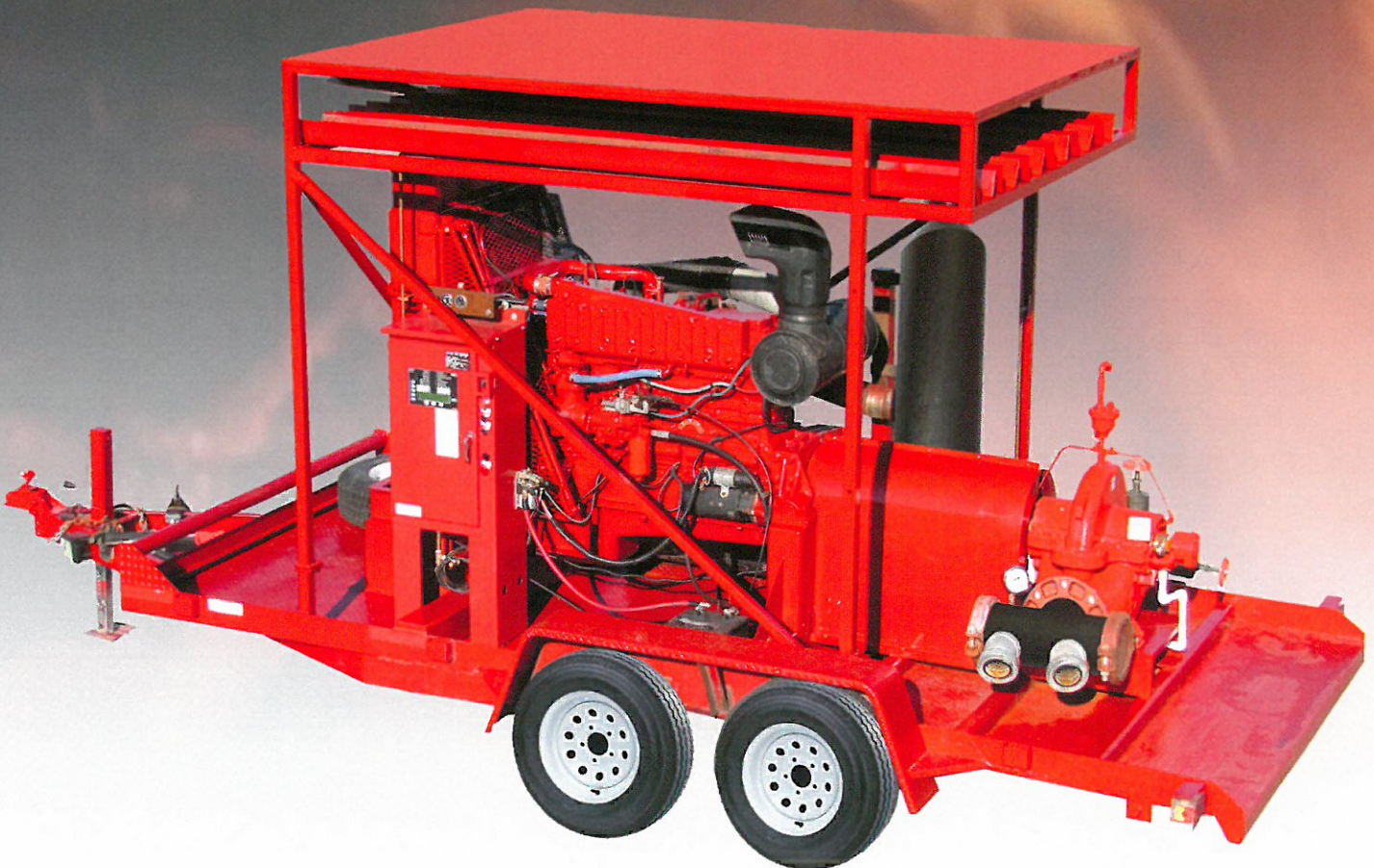
FIRE PUMP TESTING and MAINTENANCE

- Weekly / monthly / annual fire pump testing
- Churn / flow meter loop / full flow testing
- Fire pump maintenance
- Preventative diesel engine maintenance (Oil, antifreeze, anodes, filters, etc.)
- Turnkey rebuild / replacement services
- Fire pump stuffing box repacking
- Fire pump / motor bearing services (Ball, radial, thrust and babbitt bearings)
- Stocking distributor of replacement parts for all makes and models of fire pumps, motors, diesel engines and control panels
- Michigan Mechanical Contractor #7115166
- Michigan Public Act 144 / 207 certified Class M, N, O and P # S-0487
- Class "A" Ohio Fire Suppression Contractor # FC000110COMPCLA
- OSHA confined space entry certified # 29CFR-1910-146
- NFPA #25 technical committee member
- NFPA #25 technical committee member
- NFSA and AFSA associate member
- Professional grade SFPE member



FIRE PUMP REBUILD SERVICE

- Turnkey fire pump rebuilds with standby automatic protection
- Morando Lathe 24" x 12' Digital Read Out
- Sharpe Lathe 18" x 8' Digital Read Out
- Monarch Lathe 17" x 60' Trava Dial
- (2) Bridgeport Vertical Mills
- Lincoln 20" Cut off Saw
- Heckert Radial Arm Drill
- 48" - 60" Devlieg Boring Mill
- Dynamics Research Model 602E 3000# Balancer
- 150 Ton "H" frame press
- 48" x 48" Safety clean parts cleaning tank
- 1800 PSI power washer and Trinco sand blaster
- Hydraulic shaft straightening bench
- Miller CP-2000 wire feed and Syncrowave 350 LX MIG / TIG welder
- Test pit 60" diameter x 10' deep
- 480 volt / 3 phase or 240 volt / 1 phase up to 100 HP
- Micrometers up to 48"
- Rockwell hardness tester
- Laser shaft alignment equipment



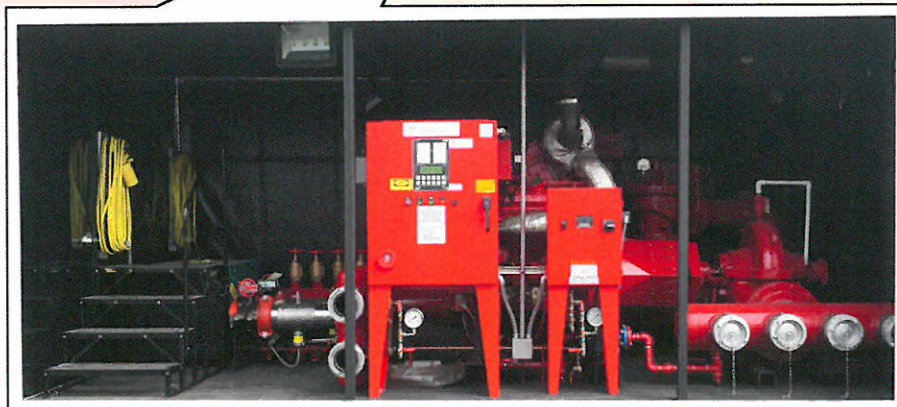
CUSTOM FABRICATED PIPE and FITTINGS

- Dynatorch XLS 6' x 10' 105 amp Hypertherm plasma cutting table
- Dynatorch XLS 22' long 95 amp Hypertherm plasma tube cutting machine



CUSTOM FABRICATED PROJECTS

- 27,000 lb. tri-axle trailer
- 3,000 gpm @ 125 psi HSC AC Fire Pump w/ controller
- 368 hp @ 1760 rpm Clarke Detroit Diesel engine
- 500 gallon double containment baffled fuel tank
- Removable sliding side curtains
- Dual RPZ type back flow preventers
- 15 gpm jockey pump w/ controller
- Cummins 10kw 240/120 volt, 1 phase AC generator
- 100 sq. ft. climate controlled operator station
- Claval 8" main relief valve
- AC / DC lighting sources
- Heat traced small bore piping
- Hose and tool storage



Fire pumps are designed to provide the best fire protection possible. If a fire occurs, a reliable fire protection system is often the difference between minor inconveniences and major expenses due to property damage, destroyed records and plant or factory downtime.

Insurance companies worldwide recognize the value of UL-Listed and Factory Mutual approved fire protection systems. In many high risk situations insurance savings alone will pay for the entire fire protection system.

Underwood Fire Equipment has supplied fire protection pumps, control panels, valves, fittings and piping to protect thousands of properties in the worldwide marketplace. Protect yourself from the unthinkable and enlist Underwood Fire Equipment for all of your fire protection requirements.

**Corporate Headquarters:
29769 Anthony Drive
Wixom, Michigan 48393**

**Phone: 248-347-4975
855-4-UFE-PUMP
855-483-3786**

WWW.UNDERWOODFIRE.COM

