

### Appealing Architecture

We wanted to maximize your views of the golf course, open space and rear yard, so we've designed Woodridge homes with appealing architecture to give your rooms that open-to-the-outdoors look.

### Private Rear Yard and Use Easement

Put your imagination to work in your backyard and exclusive use easement area . . . it's large enough to accommodate a hydrotherapy spa, decking, flower garden, lawn, or a brick, flagstone or concrete patio, yet small enough so it's not a burden to maintain. Your plans are subject to architectural committee approval, of course, to ensure the integrity of the community.

### Access Easement Garden Gate

Garden tools and barbecue equipment are easily accessible from your spacious two-car garage to your backyard thanks to the rear yard access easement and convenient garden gate.

### Planted Sloping Rear Yards

Woodridge has eye appeal from all angles. That's why we've planted sloping rear yards behind the homes with beautiful vegetation, which in most instances, is cared for by the Homeowner's Association. Your sales representative will be happy to give you more details.

### Varied Front Walkways

No boring sameness . . . front walkways are fashioned in a mix of shapes and sizes and positioned in a variety of locations to add eye appeal.

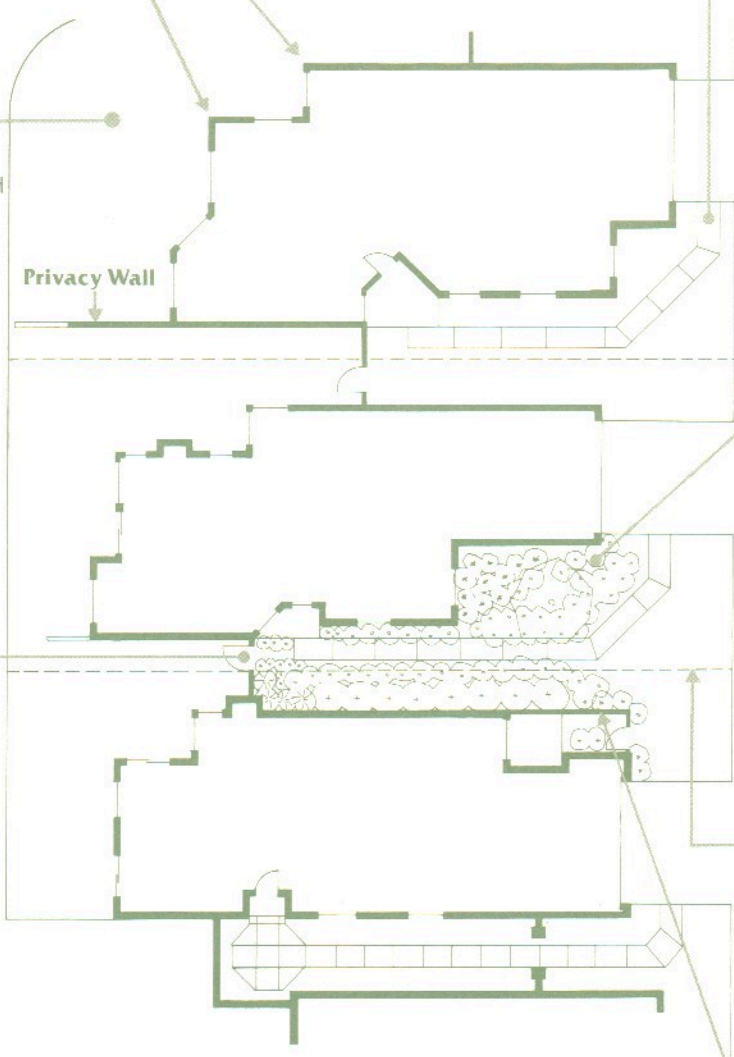
### Private Front Yard Entry

A private front yard entry leads to the beautifully landscaped garden framing your Woodridge patio home. All you have to do is sit back and watch it grow . . . the Homeowner's Association takes care of it for you, giving you more time to savor all the pleasures of country club living.

### Lot Line

### Garden Walls

We know privacy is important to you. That's why we've constructed attractive garden and privacy walls in a variety of heights throughout the Woodridge community.



Doug Allred has earned a reputation for creating exceptional residential communities throughout the San Diego metropolitan area. These include The Beach Colony-Del Mar, Del Mar Woods, Sea Colony-Point Loma, the Woodlands communities — La Jolla, North Rim-Mission Valley, Boardwalk-La Jolla, Canyon Rim-Rose Canyon and Avocado Village-Rancho San Diego.

In addition to Woodridge-Escondido, The Douglas Allred Company is planning or is currently developing residential projects in North City West, Del Mar, the Golden Triangle, and the Mission Valley areas of San Diego, and in Newport Beach. The Company's current commercial activities include development of the 127-acre Rancho Bernardo Corporate Center and the 32-acre Miramar Business Center. In addition, the company is developing prime industrial and office properties located in Sorrento Valley and Mission Valley, and the redevelopment of the 20-acre Bellevue Shopping Center in the mid-city area of San Diego.

The team of professionals comprising The Douglas Allred Company is committed to creating lasting value for its home buyers by designing and constructing the highest quality, environmentally sensitive homes. Hard work, experience, attention to detail and dedication of each member of the Allred team is directed to the accomplishment of this goal.

THE DOUGLAS ALLRED COMPANY 