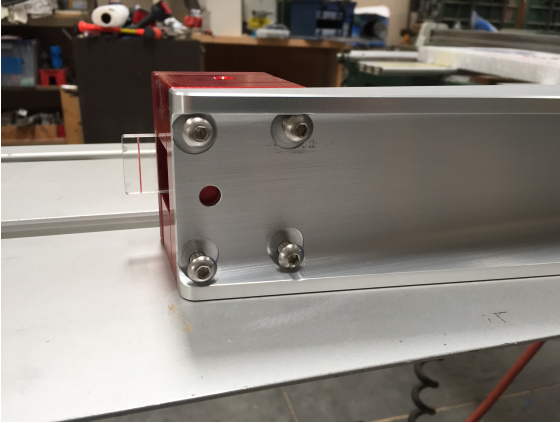
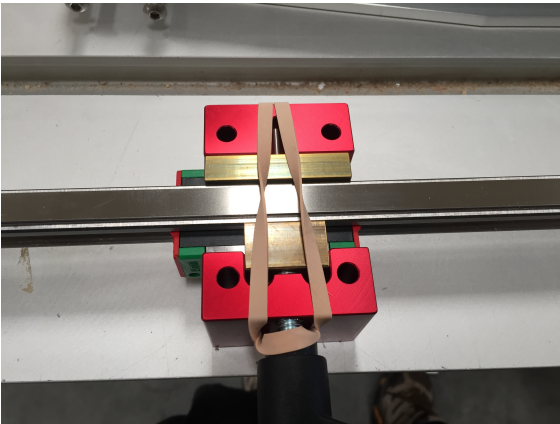


# Linear Retrofit Instructions

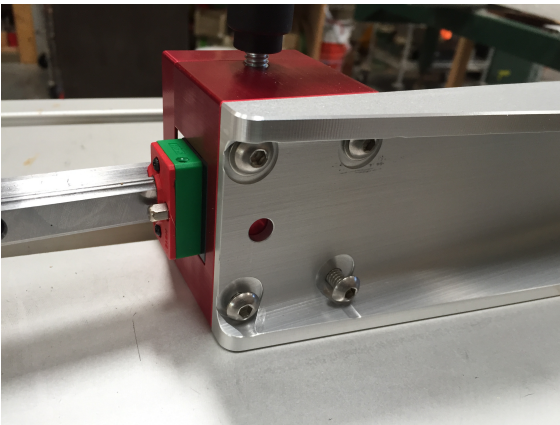


Lay your Parallel Fence in the position shown. You can remove the measuring rod as it will make it easier to do. Remove the 1/4-20 button head screws and remove the rear block and cap. Analog versions will come with a new cap, DRO versions you will re-use the DRO unit and mount.

DRO versions have two washers on the upper bolts, please note this and replace them accordingly.



This is what the retrofit unit will look like. The rubber bands are to keep the clamping blocks (brass parts) from falling out. Remove the rubber band but leave the lever clamped.



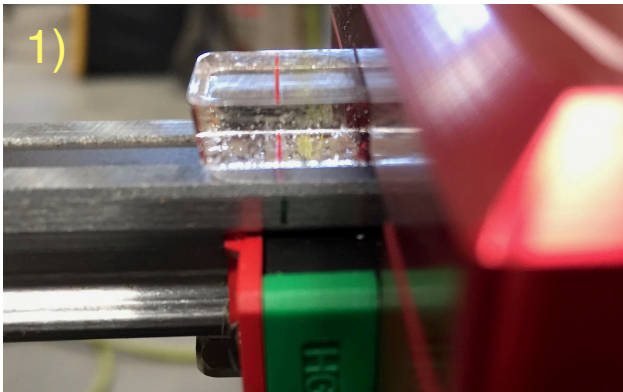
Lay the new assembly behind the c-channel and re-attach using the 1/4-20 bolts. DRO units use washers on the top bolts so the bolts don't stick through and hit the Fiana unit. Tighten firmly with a hex key wrench.

DRO versions you re-use your existing DRO unit and mount. Analog versions come with a new cap, tape measure and hairline pointer.

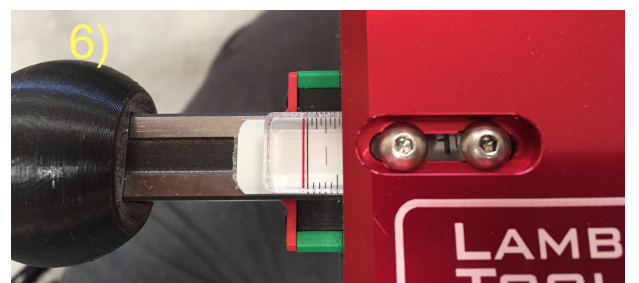
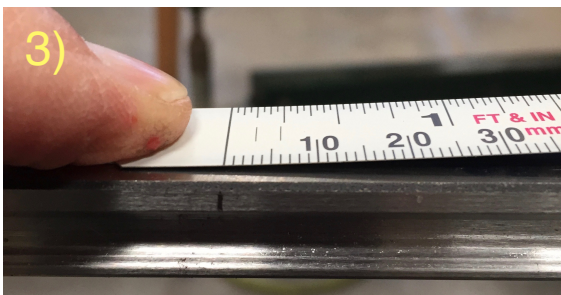
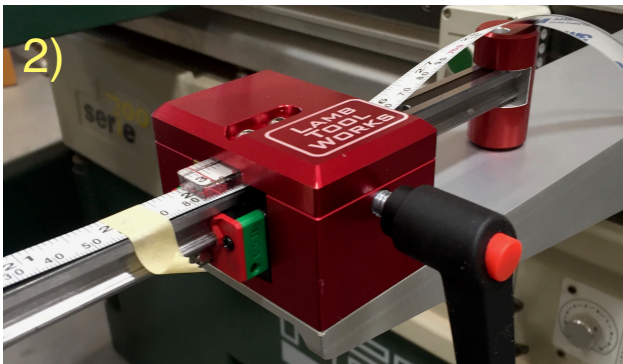


One word of caution, on the DRO version the magnetic band is covered with a stainless steel cover, the edges are sharp! We have deburred them as best possible, but it is still possible to cut yourself, so be careful how you grab the rail.

# Linear Retrofit Instructions



- 1) For Analog units, once assembled, place on machine, advance the measuring rod to the edge of the blade and put a pencil mark on the linear rail in line with the hairline pointer.
- 2) Position the rail out away from the blade and slide the new tape measure under the top cap and line the zero mark up with the pencil mark. Cut the other end of the tape to stop approximately 1" from the end stop.
- 3) Remove 6" to 8" of the paper from the adhesive on the rear of the tape and carefully line up the whole tape, centered on top of the rail and inline with the pencil mark.
- 4) Stick the first portion down, then pull more of the paper and stick more down.
- 5) At one point you will have to tuck the paper under and slide the one end back towards the blade and remove the final piece of paper and stick the last portion of the tape down.
- 6) If any final adjustments for zero reading are needed, loosen the hairline pointer and fine tune.



DRO units, you will calibrate the display as you previously did by pushing the Enter/Reset button for approximately 3 seconds.