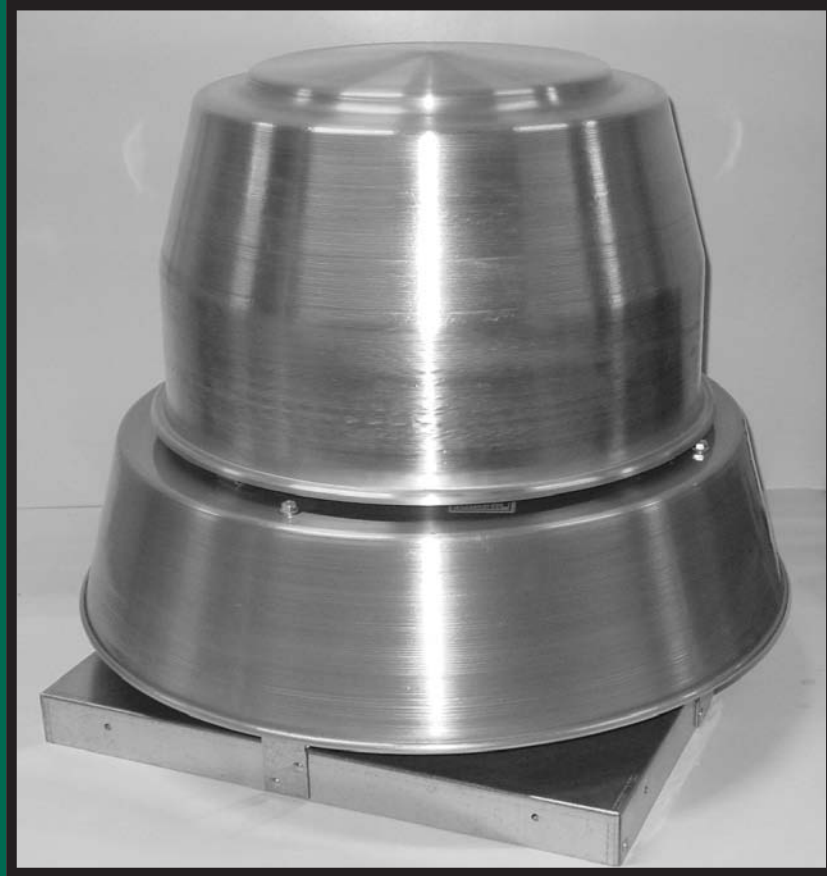




INDUSTRIES DIVISION

AMERICAN COOLAIR CORPORATION



Centrifugal Power Roof Ventilators

TYPE CRBA - BELT DRIVE

CRBA

Belt Drive Centrifugal Power Roof Ventilators

Applications

The CRBA units are quiet, dependable power roof ventilators recommended for a wide range of general exhaust applications where low, medium and high ranges of air volume and pressure are specified. Applications include virtually all types of light manufacturing, commercial and institutional buildings such as shopping centers, hospitals, schools, hotels, office and apartment buildings, warehouses, airports, bus terminals and many others.

CRBA units are specified where a roof-mounted location is desired to eliminate interference with other equipment or activities in the building. They permit the direct upward venting of overheated air. CRBA units may be used with or without ducts.

The advantages of a CRBA belt-drive over a direct-drive roof ventilator include quieter operation, adjustable performance to suit operating needs and availability of larger volume units.

Construction

CRBA models feature a housing of durable spun aluminum for optimum weather protection. The overlapping deep-spun venturi minimizes air turbulence and increases efficiency.

The aluminum centrifugal wheel is a non-overloading, backward-inclined type, selected for low noise levels. Backplate fins draw cool air through the motor compartment. The wheel is secured to a machined aluminum hub, and computer balanced on state-of-the-art equipment. The hub features a line bore, which eliminates the need for bushings.

Neoprene vibration isolators to reduce noise and wear, and galvanized steel mesh birdscreen are both standard.

Drive Mechanism

The belt driven CRBA utilize a standard V-belt drive design with variable pitch cast iron motor pulley for adjusting fan speed. Drive shaft is turned, ground and polished. Motor support is adjustable for proper tensioning.

Bearings

Heavy duty pillow-block bearings with cast iron housing are self-aligning and relubricable.

Motors

The standard motor for CRBA models is open drip-proof construction, located out of the airstream. Totally enclosed, energy efficient, two-speed and explosion-proof motors may also be available. All motor brands are recognized and serviced nationwide. UL label may not be available for non-standard motors.



UL705 – E39944

Type CRBA ventilators are Listed by Underwriters Laboratory Inc. to US and Canadian safety standards.



American Coolair Corporation, ILG Industries Division certifies that the Type CRBA PRV's shown herein are licensed to bear the AMCA Seal. The ratings shown are based on tests and procedures performed in accordance with AMCA Publication 211 and AMCA Publication 311 and comply with the requirements of the AMCA Certified Ratings Program.

Guide Specifications

Power Roof Ventilators shall be of the CRBA centrifugal type as manufactured by ILG Industries Division of American Coolair Corporation (individual models to be listed in fan schedule). Units shall meet UL Standard 705 and shall bear the AMCA Certified Ratings Seal for air and sound performance. Base and venturi inlet shall be one piece heavy gauge spun aluminum or galvanized steel, with wheel and venturi overlapping for efficient operation. Motor compartment cover shall be heavy gauge aluminum construction and easily removable for access to motor and drive.

Drive mechanism shall incorporate a V-belt drive with cast iron motor pulley. Drive shaft shall be turned, ground and polished. The centrifugal wheel shall be heavy gauge aluminum with backward-inclined, non-overloading blades and be computer balanced.

Bearings shall be self-aligning and have fittings for relubrication.

Motor shall be open drip-proof construction, NEMA design B with minimum service factor of 1.15. Adjustable motor pulley shall be provided to allow for field adjustment and system balance. Motor shall be mounted on a steel mounting bracket with single bolt adjustment.

(Mounted and wired disconnect switch, backdraft damper, epoxy coating, roof curb and other accessories shall be listed in the fan schedule.)

CRBA06 Performance Data

CFM at Static Pressure																				RPM Range Motor HP			RPM	
0.00		.125		.250		.375		.500		.625		.750		1.00		1.25		1.50		1/4 L	1/4 M	1/4 H		
BHP	Sone	BHP	Sone	BHP	Sone	BHP	Sone	BHP	Sone	BHP	Sone	BHP	Sone	BHP	Sone	BHP	Sone	BHP	Sone	BHP	Sone			
374		325		263		185																	1135	
0.03	4.9	0.03	4.4	0.03	4.1	0.03	3.7																	
401		355		300		230																	1217	
0.03	5.8	0.03	5.4	0.04	5.0	0.04	4.7																	
448		406		362		308		240															1360	
0.04	7.6	0.05	7.1	0.05	6.8	0.05	6.5	0.05	6.1															
495		456		421		373		322		259													1503	
0.06	9.5	0.06	9.0	0.07	8.5	0.07	8.1	0.07	7.8	0.06	7.5													
542		505		475		435		391		342													1646	
0.08	11.4	0.08	11.0	0.09	10.5	0.09	10.0	0.09	9.7	0.09	9.4													
589		555		526		495		455		414		366											1789	
0.10	13.4	0.11	13.2	0.11	12.7	0.11	12.1	0.11	11.6	0.12	11.4	0.11	11.0											
637		604		577		550		516		479		441		345										
0.13	15.5	0.13	15.4	0.14	14.9	0.14	14.3	0.14	13.7	0.14	13.4	0.15	13.2	0.14	12.4								1933	
684		653		628		603		575		541		506		429										
0.16	17.7	0.16	17.7	0.17	17.3	0.17	16.6	0.18	16.0	0.18	15.6	0.18	15.4	0.18	14.8								2076	
731		702		677		655		631		602		569		503		419								
0.20	20	0.20	20	0.20	19.9	0.21	19.2	0.21	18.6	0.22	18.3	0.22	17.9	0.22	17.4	0.21	16.8						2219	

Performance shown is for Type A: free inlet, free outlet. Performance ratings do not include the effects of appurtenances in the airstream. Power ratings (BHP) do not include drive losses. Bearing losses are included. The sound ratings shown are loudness values in fan sones at 5 ft. (1.5 m) in a hemispherical free field calculated per AMCA Standard 301. Values shown are for installation Type A: free inlet fan sone levels.

CRBA08 Performance Data

CFM at Static Pressure																		RPM Range			RPM		
0.00		.125		.250		.375		.500		.625		.750		1.00		1.25		1.50		Motor HP			
BHP	Sone	BHP	Sone	BHP	Sone	BHP	Sone	BHP	Sone	BHP	Sone	BHP	Sone	BHP	Sone	BHP	Sone	BHP	Sone	1/4 L	1/4 M	1/4 H	
492		439		376		280																	1135
0.03	4.6	0.03	4.3	0.03	4.2	0.03	4.0																
528		478		422		354																	1217
0.03	5.5	0.04	5.2	0.04	5.2	0.04	5.0																
590		545		499		444		373															1360
0.04	7.2	0.05	6.8	0.05	6.8	0.06	6.7	0.06	6.5														
652		611		571		524		473		401													1503
0.06	8.7	0.07	8.5	0.07	8.4	0.08	8.3	0.08	8.2	0.08	8.0												
714		676		640		601		555		508		439											1646
0.08	10.5	0.08	10.3	0.09	10.2	0.10	10.1	0.10	10.0	0.10	9.8	0.10	9.7										
776		741		708		674		634		592		547		351									1789
0.10	12.4	0.11	12.3	0.12	12.2	0.12	12.0	0.13	11.9	0.13	11.8	0.13	11.7	0.11	11.4								
838		806		775		744		711		672		633		536									1933
0.13	14.4	0.13	14.3	0.14	14.2	0.15	14.0	0.16	13.9	0.16	13.7	0.17	13.6	0.17	13.5								
900		870		841		813		783		750		714		638		515							2076
0.16	16.6	0.16	16.3	0.17	16.2	0.18	16.1	0.19	15.9	0.19	15.8	0.20	15.7	0.21	15.5	0.20	15.3						
962		934		907		880		853		824		792		723		645		485					2219
0.19	19.1	0.20	18.8	0.21	18.6	0.22	18.5	0.23	18.4	0.23	18.3	0.24	18.2	0.25	18.1	0.26	17.8	0.23	17.5				

Performance shown is for Type A: free inlet, free outlet. Performance ratings do not include the effects of appurtenances in the airstream. Power ratings (BHP) do not include drive losses. Bearing losses are included. The sound ratings shown are loudness values in fan sones at 5 ft. (1.5 m) in a hemispherical free field calculated per AMCA Standard 301. Values shown are for installation Type A: free inlet fan sone levels.

CRBA10 Performance Data

CFM at Static Pressure																			RPM Range			RPM	
0.00		.125		.250		.375		.500		.625		.750		1.00		1.25		1.50		Motor HP			
BHP	Sone	BHP	Sone	BHP	Sone	BHP	Sone	BHP	Sone	BHP	Sone	BHP	Sone	BHP	Sone	BHP	Sone	BHP	Sone	1/4 L	1/4 M	1/4 H	
653		579		497		383																	1135
0.03	5.2	0.04	4.9	0.04	4.4	0.04	3.9																1217
701		631		558		466																	1360
0.04	6.2	0.05	5.9	0.05	5.5	0.06	5.0																1503
783		720		660		586		494															1646
0.06	7.6	0.07	7.4	0.07	7.1	0.08	6.6	0.08	6.2														1789
865		808		754		693		623		535													1933
0.08	9.2	0.09	9.0	0.09	8.8	0.10	8.3	0.10	7.9	0.10	7.5												2076
948		895		845		795		734		667		586											2219
0.10	11.0	0.11	10.9	0.12	10.7	0.13	10.3	0.13	9.9	0.14	9.4	0.14	9.0										
1030		982		935		890		839		782		719		540									
0.13	13.0	0.14	12.9	0.15	12.7	0.16	12.4	0.17	12.0	0.17	11.6	0.18	11.2	0.17	10.3								
1113		1068		1024		983		940		889		836		709									
0.17	15.2	0.18	15.1	0.19	14.9	0.20	14.7	0.21	14.4	0.21	14.0	0.22	13.6	0.22	12.7								
1195		1153		1112		1073		1035		992		943		839		703							
0.21	17.4	0.22	17.4	0.23	17.2	0.24	17.0	0.25	16.7	0.26	16.4	0.27	16.0	0.27	15.2	0.27	14.5						
1278		1238		1200		1162		1126		1090		1047		955		847		703					
0.26	19.8	0.27	19.8	0.28	19.7	0.29	19.5	0.30	19.3	0.31	19.0	0.32	18.6	0.33	17.9	0.34	17.1	0.33	16.3				

Performance shown is for Type A: free inlet, free outlet. Performance ratings do not include the effects of appurtenances in the airstream. Power ratings (BHP) do not include drive losses. Bearing losses are included. The sound ratings shown are loudness values in fan sones at 5 ft. (1.5 m) in a hemispherical free field calculated per AMCA Standard 301. Values shown are for installation Type A: free inlet fan sone levels.

CRBA12 Performance Data

CFM at Static Pressure																	RPM Range Motor HP					RPM				
0.00		.125		.250		.375		.500		.750		1.00		1.25		1.50		2.00		1/4 L	1/4 H		1/3	1/2	3/4	
BHP	Sone	BHP	Sone	BHP	Sone	BHP	Sone	BHP	Sone	BHP	Sone	BHP	Sone	BHP	Sone	BHP	Sone	BHP	Sone	BHP	Sone					
1002		900		791		643																				886
0.05	4.7	0.06	4.2	0.07	4.1	0.07	3.8																			
1054		958		858		730																				932
0.06	5.2	0.07	4.8	0.08	4.6	0.08	4.4																			
1107		1016		923		808		637																		979
0.07	5.8	0.08	5.4	0.09	5.2	0.09	5.1	0.09	4.9																	
1161		1073		986		880		749																		1026
0.08	6.4	0.09	6.0	0.10	5.8	0.11	5.7	0.11	5.5																	
1213		1129		1045		949		836																		1072
0.09	7.0	0.10	6.6	0.11	6.4	0.12	6.3	0.12	6.2																	
1266		1186		1105		1018		914																		1119
0.10	7.6	0.12	7.2	0.13	7.0	0.13	6.9	0.14	6.8																	
1319		1243		1164		1085		988	666																	1166
0.12	8.3	0.13	7.9	0.14	7.7	0.15	7.6	0.16	7.5	0.14	7.2															
1371		1298		1222		1148		1057	816																	1212
0.13	9.0	0.14	8.7	0.16	8.4	0.16	8.3	0.17	8.2	0.17	7.9															
1424		1354		1281		1210		1127	922																	1259
0.15	9.8	0.16	9.4	0.17	9.2	0.18	9.0	0.19	9.0	0.19	8.7															
1476		1409		1338		1270		1194	1010																	1305
0.16	10.6	0.18	10.2	0.19	9.9	0.20	9.8	0.21	9.7	0.22	9.6															
1529		1464		1396		1330		1260	1090	793																1352
0.18	11.4	0.20	11.1	0.21	10.8	0.22	10.6	0.23	10.6	0.24	10.4	0.22	10.2													
1582		1520		1454		1390		1325	1165	940																1399
0.20	12.3	0.22	11.9	0.23	11.7	0.24	11.5	0.25	11.4	0.27	11.3	0.26	11.0													
1634		1574		1510		1447		1386	1236	1047																1445
0.22	13.1	0.24	12.7	0.25	12.4	0.27	12.2	0.28	12.1	0.29	12.1	0.29	11.8													
1688		1629		1568		1506		1447	1306	1139	791															1492
0.25	13.7	0.26	13.3	0.28	13.0	0.29	12.8	0.30	12.7	0.32	12.7	0.33	12.6	0.28	12.4											
1741		1684		1625		1565		1508	1376	1222	981															1539
0.27	14.5	0.29	14.1	0.30	13.8	0.32	13.6	0.33	13.4	0.35	13.4	0.36	13.3	0.34	13.1											
1793		1738		1680		1622		1566	1443	1297	1103															1585
0.30	15.3	0.31	14.9	0.33	14.6	0.34	14.4	0.36	14.3	0.38	14.1	0.39	14.0	0.38	13.8											
1846		1793		1737		1680		1625	1510	1371	1204	852														1632
0.32	16.1	0.34	15.7	0.36	15.4	0.37	15.2	0.39	15.1	0.41	14.9	0.43	14.7	0.42	14.6	0.36	14.4									
1898		1846		1792		1737		1683	1574	1441	1291	1050														1678
0.35	16.9	0.37	16.5	0.39	16.2	0.40	16.0	0.42	15.9	0.44	15.7	0.46	15.5	0.46	15.3	0.43	15.1									
1951		1901		1849		1795		1742	1638	1512	1373	1181														1725
0.38	17.7	0.40	17.4	0.42	17.1	0.43	16.9	0.45	16.7	0.47	16.5	0.50	16.3	0.51	16.1	0.49	15.9									
2004		1955		1905		1853		1801	1700	1582	1450	1287														1772
0.41	18.5	0.43	18.2	0.45	17.9	0.47	17.7	0.49	17.5	0.51	17.3	0.53	17.2	0.55	17.0	0.54	16.6									
2056		2009		1959		1909		1858	1760	1649	1522	1378														1818
0.45	19.4	0.46	19.0	0.48	18.8	0.50	18.5	0.52	18.4	0.55	18.2	0.57	18.1	0.59	17.9	0.59	17.6									
2109		2063		2015		1966		1916	1821	1717	1594	1462														1865
0.48	20	0.50	19.9	0.52	19.7	0.54	19.5	0.56	19.3	0.59	19.1	0.61	18.9	0.63	18.8	0.64	18.6									
2162		2116		2069		2022		1973	1880	1781	1664	1540														1911
0.52	21	0.54	21	0.56	21	0.58	20	0.60	20	0.63	19.9	0.65	19.8	0.68	19.7	0.69	19.5									
2215		2170		2125		2078		2031	1939	1846	1734	1615														1958
0.56	22	0.58	22	0.60	22	0.62	21	0.64	21	0.67	21	0.69	21	0.72	21	0.74	21									
2268		2225		2180		2135		2089	1999	1909	1803	1688	1395													2005
0.60	23	0.62	23	0.64	22	0.66	22	0.68	22	0.72	22	0.74	22	0.77	22	0.79	22	0.77	21							

Performance shown is for Type A: free inlet, free outlet. Performance ratings do not include the effects of appurtenances in the airstream. Power ratings (BHP) do not include drive losses. Bearing losses are included. The sound ratings shown are loudness values in fan sones at 5 ft. (1.5 m) in a hemispherical free field calculated per AMCA Standard 301. Values shown are for installation Type A: free inlet fan sone levels.

CRBA13 Performance Data

CFM at Static Pressure																			RPM Range Motor HP				RPM		
0.00		.125		.250		.375		.500		.750		1.00		1.25		1.50		2.00		1/4	1/3	1/2		3/4	
BHP	Sone	BHP	Sone	BHP	Sone	BHP	Sone	BHP	Sone	BHP	Sone	BHP	Sone	BHP	Sone	BHP	Sone	BHP	Sone	BHP	Sone				
1342		1232		1102		959		773																886	
0.08	6.1	0.09	5.7	0.10	5.2	0.11	4.8	0.10	4.5																
1412		1308		1185		1056		898																932	
0.09	6.7	0.11	6.4	0.12	5.9	0.12	5.5	0.12	5.2																
1483		1385		1269		1149		1010																979	
0.11	7.3	0.12	7.1	0.13	6.7	0.14	6.2	0.14	5.9																
1554		1462		1353		1240		1114																1026	
0.13	8.1	0.14	7.8	0.15	7.4	0.16	7.0	0.16	6.7																
1624		1536		1433		1325		1211	907															1072	
0.14	8.9	0.16	8.6	0.17	8.3	0.18	7.8	0.19	7.4	0.18	6.9														
1695		1612		1515		1411		1305	1042															1119	
0.16	9.6	0.18	9.4	0.19	9.1	0.20	8.7	0.21	8.3	0.21	7.7														
1766		1687		1595		1496		1396	1159															1166	
0.18	10.5	0.20	10.3	0.21	10.0	0.22	9.6	0.24	9.2	0.24	8.6														
1836		1760		1673		1578		1482	1266															1212	
0.21	11.5	0.22	11.2	0.24	10.9	0.25	10.6	0.26	10.2	0.27	9.5														
1907		1834		1752		1661		1569	1369	1111														1259	
0.23	12.4	0.25	12.2	0.27	11.9	0.28	11.6	0.29	11.2	0.30	10.5	0.30	9.9												
1977		1907		1828		1741		1653	1466	1236														1305	
0.26	13.3	0.28	13.1	0.29	12.9	0.31	12.6	0.32	12.2	0.34	11.5	0.33	10.9												
2048		1981		1906		1823		1737	1562	1352														1352	
0.29	14.4	0.31	14.2	0.33	13.9	0.34	13.6	0.35	13.3	0.37	12.6	0.37	12.0												
2119		2054		1983		1904		1821	1654	1461	1217													1399	
0.32	15.3	0.34	15.1	0.36	14.8	0.37	14.5	0.38	14.2	0.41	13.6	0.41	13.0	0.40	12.5										
2189		2126		2058		1982		1902	1742	1562	1346													1445	
0.35	16.2	0.37	16.0	0.39	15.7	0.41	15.4	0.42	15.1	0.45	14.5	0.46	14.0	0.45	13.4										
2260		2200		2134		2062		1985	1830	1662	1465													1492	
0.39	16.9	0.41	16.7	0.43	16.4	0.45	16.2	0.46	15.9	0.49	15.3	0.50	14.8	0.50	14.3										
2331		2273		2210		2141		2067	1916	1759	1576	1352												1539	
0.42	17.7	0.45	17.5	0.47	17.3	0.49	17.1	0.50	16.8	0.53	16.2	0.55	15.6	0.55	15.2	0.54	14.8								
2401		2344		2283		2217		2146	2000	1850	1680	1480												1585	
0.46	18.5	0.49	18.4	0.51	18.3	0.53	18.0	0.54	17.7	0.57	17.0	0.60	16.5	0.60	16.0	0.60	15.6								
2472		2417		2358		2295		2227	2085	1941	1782	1599												1632	
0.51	19.5	0.53	19.4	0.55	19.3	0.57	19.0	0.59	18.7	0.62	18.0	0.65	17.3	0.66	16.9	0.65	16.5								
2541		2488		2432		2371		2305	2167	2029	1879	1708												1678	
0.55	21	0.57	20	0.60	20	0.62	20	0.64	19.8	0.66	19.1	0.70	18.2	0.71	17.7	0.71	17.4								
2613		2561		2506		2447		2385	2251	2117	1975	1815												1725	
0.60	22	0.62	21	0.65	21	0.67	21	0.69	21	0.72	20	0.75	19.4	0.77	18.7	0.78	18.2								
2684		2634		2581		2524		2463	2334	2204	2068	1918	1546											1772	
0.65	23	0.67	23	0.70	22	0.72	22	0.74	22	0.77	21	0.81	21	0.83	19.8	0.84	19.2	0.82	18.6						

Performance shown is for Type A: free inlet, free outlet. Performance ratings do not include the effects of appurtenances in the airstream. Power ratings (BHP) do not include drive losses. Bearing losses are included. The sound ratings shown are loudness values in fan sones at 5 ft. (1.5 m) in a hemispherical free field calculated per AMCA Standard 301. Values shown are for installation Type A: free inlet fan sone levels.

CRBA15 Performance Data

CFM at Static Pressure																	RPM Range Motor HP					RPM				
0.00		.125		.250		.375		.500		.750		1.00		1.25		1.50		2.00		1/4	1/3		1/2	3/4	1	
BHP	Sone	BHP	Sone	BHP	Sone	BHP	Sone	BHP	Sone	BHP	Sone	BHP	Sone	BHP	Sone	BHP	Sone	BHP	Sone	BHP	Sone					
1754	1687	1578	1459	1328																					886	
0.15	7.4	0.16	6.8	0.17	6.5	0.19	6.5	0.20	6.3																932	
1845	1785	1682	1562	1471																					979	
0.18	8.3	0.19	7.6	0.20	7.3	0.21	7.3	0.23	7.1																1026	
1938	1884	1787	1675	1586																					1072	
0.20	9.2	0.22	8.6	0.23	8.2	0.24	8.2	0.26	8.1																1119	
2031	1982	1891	1793	1691	1399																				1166	
0.23	10.3	0.25	9.6	0.26	9.2	0.28	9.2	0.29	9.0	0.31	8.9														1212	
2122	2077	1992	1902	1794	1580																				1259	
0.27	11.3	0.28	10.7	0.30	10.3	0.31	10.3	0.33	10.1	0.35	9.9														1305	
2215	2173	2095	2009	1906	1737																				1352	
0.30	12.4	0.32	11.8	0.34	11.4	0.35	11.4	0.37	11.2	0.40	11.0														1399	
2308	2269	2197	2115	2024	1864	1526																			1445	
0.34	13.5	0.36	13.0	0.38	12.6	0.39	12.6	0.41	12.3	0.44	12.1	0.45	11.3												1492	
2399	2362	2297	2217	2135	1971	1728																			1539	
0.39	14.7	0.40	14.1	0.42	13.8	0.44	13.8	0.45	13.5	0.49	13.3	0.51	12.5												1585	
2492	2457	2399	2321	2245	2076	1899																			1632	
0.43	15.8	0.45	15.3	0.47	14.9	0.49	14.9	0.50	14.6	0.54	14.4	0.57	13.7													
2583	2550	2497	2422	2349	2179	2044	1713																			
0.48	16.8	0.50	16.3	0.52	15.9	0.54	15.9	0.55	15.6	0.59	15.4	0.63	14.8	0.64	14.2											
2676	2645	2597	2525	2455	2289	2166	1920																			
0.54	17.9	0.55	17.4	0.57	17.1	0.59	17.1	0.61	16.8	0.65	16.6	0.69	15.8	0.71	15.3											
2769	2739	2695	2628	2559	2406	2275	2093																			
0.59	19.0	0.61	18.6	0.63	18.2	0.65	18.2	0.67	18.0	0.71	17.8	0.75	17.0	0.78	16.5											
2860	2831	2791	2728	2661	2520	2378	2244	1951																		
0.65	20	0.67	19.8	0.69	19.5	0.72	19.5	0.73	19.2	0.77	18.9	0.81	18.2	0.85	17.7	0.87	17.0									
2953	2925	2888	2830	2764	2633	2483	2373	2146																		
0.72	21	0.73	21	0.75	20	0.78	20	0.80	20	0.84	19.8	0.89	19.1	0.93	18.7	0.96	18.1									
3046	3019	2985	2932	2868	2742	2590	2487	2315																		
0.79	22	0.81	21	0.83	21	0.85	21	0.88	21	0.92	21	0.96	20	1.00	19.7	1.04	19.1									
3137	3111	3079	3030	2968	2847	2702	2590	2464																		
0.86	23	0.88	22	0.90	22	0.93	22	0.95	22	0.99	22	1.04	21	1.08	21	1.13	20									
3230	3205	3174	3130	3071	2953	2819	2695	2594																		
0.94	24	0.96	23	0.98	23	1.01	23	1.04	23	1.07	22	1.12	22	1.17	22	1.21	21									

Performance shown is for Type A: free inlet, free outlet. Performance ratings do not include the effects of appurtenances in the airstream. Power ratings (BHP) do not include drive losses. Bearing losses are included. The sound ratings shown are loudness values in fan sones at 5 ft. (1.5 m) in a hemispherical free field calculated per AMCA Standard 301. Values shown are for installation Type A: free inlet fan sone levels.

CRBA16 Performance Data

CFM at Static Pressure																		RPM Range Motor HP						RPM			
0.00		.125		.250		.375		.500		.750		1.00		1.25		1.50		2.00		1/4	1/3	1/2	3/4		1	1 1/2	
BHP	Sone	BHP	Sone	BHP	Sone	BHP	Sone	BHP	Sone	BHP	Sone	BHP	Sone	BHP	Sone	BHP	Sone	BHP	Sone	BHP	Sone						
2170	7.3	2034	6.4	1862	5.9	1683	5.4	1427	4.8																	734	
2279	7.8	2152	7.0	1992	6.6	1823	6.1	1620	5.6																	771	
2385	8.5	2265	7.8	2116	7.3	1954	6.8	1780	6.4																	807	
2495	9.2	2381	8.6	2242	8.1	2086	7.7	1930	7.2																	844	
2604	10.0	2496	9.5	2367	8.9	2217	8.5	2070	8.1	1634																881	
2713	10.8	2610	10.4	2489	9.7	2347	9.5	2206	9.0	1853																918	
2820	11.8	2721	11.3	2607	10.6	2473	10.4	2336	9.9	2029																954	
2929	12.7	2834	12.3	2727	11.6	2601	11.3	2467	10.9	2191	1659															991	
3039	13.6	2947	13.4	2845	12.5	2727	12.2	2598	11.9	2341	1958															1028	
3145	14.7	3057	14.5	2960	13.6	2848	13.2	2725	13.0	2480	2161															1064	
3254	15.7	3170	15.6	3077	14.8	2972	14.2	2854	14.1	2617	2340															1101	
3364	16.8	3282	16.7	3193	16.0	3093	15.3	2982	15.2	2751	2503	2114														1138	
3470	17.9	3391	17.9	3306	17.2	3211	16.3	3105	16.2	2880	2651	2333														1174	
3579	18.9	3503	19.0	3421	18.3	3331	17.4	3230	17.2	3012	2796	2522														1211	
3689	19.7	3615	19.8	3536	19.2	3449	18.3	3354	18.2	3143	2936	2693	2325													1248	
3798	21	3727	21	3650	20	3567	19.2	3476	19.2	3273	3072	2852	2550													1285	
3905	23	3835	23	3761	22	3681	21	3595	21	3399	3202	2998	2736													1321	
4073	25	4007	25	3936	24	3861	23	3780	23	3597	3406	3218	2998													1378	
4182	23	4118	24	4050	23	3977	23	3899	22	3725	3537	3355	3154	2484												1415	
4292	24	4229	24	4163	24	4093	24	4018	23	3851	3668	3490	3303	2757												1452	
4401	25	4340	25	4276	25	4208	24	4136	24	3975	3798	3623	3447	2973												1489	
1.28	25	1.32	25	1.36	25	1.40	24	1.43	24	1.50	23	1.56	23	1.61	22	1.65	21	1.66	19.6								

Performance shown is for Type A: free inlet, free outlet. Performance ratings do not include the effects of appurtenances in the airstream. Power ratings (BHP) do not include drive losses. Bearing losses are included. The sound ratings shown are loudness values in fan sones at 5 ft. (1.5 m) in a hemispherical free field calculated per AMCA Standard 301. Values shown are for installation Type A: free inlet fan sone levels.

CRBA20 Performance Data

CFM at Static Pressure																			RPM Range Motor HP					RPM		
0.00		.125		.250		.375		.500		.750		1.00		1.25		1.50		2.00		1/2	3/4	1	1 1/2		2	
BHP	Sone	BHP	Sone	BHP	Sone	BHP	Sone	BHP	Sone	BHP	Sone	BHP	Sone	BHP	Sone	BHP	Sone	BHP	Sone	BHP	Sone					
3626		3445		3247		3050		2821		2080															734	
0.37	11.8	0.40	9.6	0.42	9.2	0.43	8.8	0.45	7.9	0.43	6.7															
3808		3638		3449		3263		3060		2500															771	
0.43	12.8	0.46	10.5	0.49	10.1	0.50	9.7	0.52	9.0	0.52	7.8															
3986		3825		3644		3467		3282		2810															807	
0.49	13.8	0.52	11.4	0.55	11.1	0.57	10.6	0.58	10.2	0.60	8.8															
4169		4015		3844		3673		3501		3082															844	
0.56	14.8	0.59	12.4	0.63	12.3	0.64	11.9	0.66	11.4	0.69	10.0															
4352		4205		4042		3878		3715		3336		2794													881	
0.64	15.8	0.67	13.5	0.71	13.5	0.73	13.0	0.74	12.4	0.78	11.3	0.76	10.1													
4534		4395		4240		4081		3925		3580		3134													918	
0.72	17.0	0.75	14.6	0.80	14.6	0.82	14.1	0.83	13.5	0.88	12.6	0.88	11.4													
4712		4578		4431		4277		4127		3809		3411		2769											954	
0.81	18.2	0.84	15.8	0.89	15.6	0.92	15.2	0.93	14.9	0.98	14.0	0.99	12.7	0.95	11.6											
4895		4766		4626		4477		4332		4036		3673		3185											991	
0.91	19.4	0.94	17.1	0.99	16.7	1.03	16.5	1.04	16.4	1.08	15.4	1.11	14.0	1.09	12.9											
5152		5030		4898		4758		4619		4343		4023		3637		3007									1043	
1.06	21	1.09	18.8	1.14	18.2	1.19	18.5	1.21	18.2	1.24	17.2	1.29	16.1	1.29	15.0	1.23	14.0									
5335		5217		5091		4956		4821		4556		4262		3910		3432									1080	
1.17	23	1.21	20	1.26	19.4	1.31	19.9	1.34	19.3	1.37	18.4	1.42	17.8	1.44	16.5	1.41	15.4									
5517		5404		5283		5154		5022		4766		4494		4168		3778									1117	
1.30	24	1.33	21	1.38	21	1.44	21	1.47	21	1.51	19.5	1.56	19.2	1.59	17.7	1.58	16.7									
5700		5591		5475		5350		5223		4974		4718		4418		4071									1154	
1.43	25	1.47	23	1.52	22	1.57	22	1.62	22	1.65	21	1.70	20	1.75	19.0	1.75	18.0									
5883		5777		5665		5546		5422		5180		4937		4660		4340									1191	
1.57	26	1.61	24	1.66	22	1.72	23	1.77	23	1.81	22	1.86	21	1.91	21	1.93	19.1									
6071		5969		5860		5746		5626		5391		5157		4901		4603		3768							1229	
1.73	27	1.77	25	1.82	24	1.87	24	1.93	24	1.99	24	2.02	22	2.09	22	2.12	20	2.06	18.5							
6253		6154		6050		5940		5824		5594		5368		5129		4852		4150							1266	
1.89	28	1.93	26	1.98	25	2.04	24	2.10	25	2.17	25	2.20	23	2.26	23	2.31	22	2.29	19.7							

Performance shown is for Type A: free inlet, free outlet. Performance ratings do not include the effects of appurtenances in the airstream. Power ratings (BHP) do not include drive losses. Bearing losses are included. The sound ratings shown are loudness values in fan sonets at 5 ft. (1.5 m) in a hemispherical free field calculated per AMCA Standard 301. Values shown are for installation Type A: free inlet fan sone levels.

CRBA24 Performance Data

CFM at Static Pressure																		RPM Range							RPM			
0.00		.125		.250		.375		.500		.750		1.00		1.25		1.50		2.00		Motor HP								
BHP	Sone	BHP	Sone	BHP	Sone	BHP	Sone	BHP	Sone	BHP	Sone	BHP	Sone	BHP	Sone	BHP	Sone	BHP	Sone	BHP	Sone	1/3	1/2	3/4	1	1 1/2	2	3
4434		3880		3319		2138																						504
0.23	5.6	0.25	5.0	0.26	4.4	0.24	4.2																					
4847		4346		3837		3176																						551
0.31	6.9	0.32	6.1	0.33	5.5	0.34	5.1																					
5182		4718		4234		3720		2679																				589
0.37	8.3	0.39	7.0	0.41	6.4	0.41	6.0	0.39	5.8																			
5542		5116		4654		4210		3563																				630
0.46	9.9	0.48	8.0	0.49	7.4	0.50	7.0	0.50	6.7																			
5868		5471		5028		4615		4122																				667
0.54	10.9	0.56	9.0	0.58	8.3	0.59	7.9	0.60	7.5																			
6158		5785		5360		4963		4542																				700
0.63	11.7	0.65	9.8	0.67	9.2	0.68	8.7	0.69	8.3																			
6448		6095		5689		5305		4924		3583																		733
0.72	12.6	0.74	10.7	0.76	10.1	0.78	9.6	0.79	9.2	0.77	8.6																	
6774		6442		6056		5683		5327		4337																		770
0.84	13.7	0.86	11.9	0.88	11.3	0.90	10.6	0.91	10.1	0.91	9.7																	
7082		6767		6400		6038		5697		4883																		805
0.96	14.7	0.98	13.1	1.00	12.6	1.02	11.9	1.04	11.2	1.05	10.8																	
7399		7099		6751		6401		6070		5363		4004																841
1.09	15.8	1.11	14.5	1.14	13.9	1.16	13.2	1.18	12.5	1.20	11.9	1.15	11.4															
7742		7458		7129		6791		6469		5830		4845																880
1.25	17.2	1.27	16.0	1.30	15.3	1.32	14.7	1.34	14.0	1.37	13.1	1.36	12.9															
8050		7778		7466		7139		6825		6221		5426		3731														915
1.40	18.4	1.43	17.5	1.45	16.7	1.48	16.0	1.50	15.4	1.54	14.4	1.54	14.1	1.41	13.7													
8393		8133		7839		7524		7219		6641		5973		4807														954
1.59	20	1.61	19.1	1.64	18.2	1.67	17.5	1.70	16.9	1.74	15.8	1.76	15.4	1.70	15.0													
8753		8506		8228		7927		7631		7072		6484		5615														995
1.80	23	1.83	21	1.86	19.9	1.89	19.1	1.91	18.4	1.96	17.4	1.99	16.7	1.97	16.6													
9132		8896		8633		8346		8060		7516		6979		6286		5101												1038
2.05	25	2.07	23	2.10	22	2.13	21	2.16	20	2.22	19.2	2.25	18.2	2.26	18.1	2.18	17.7											
9633		9410		9166		8898		8624		8099		7599		7038		6237												1095
2.40	29	2.43	26	2.46	25	2.49	24	2.53	23	2.58	22	2.63	21	2.65	20	2.63	20											
10117		9906		9677		9426		9163		8656		8177		7684		7068												1150
2.78	33	2.81	30	2.85	28	2.88	26	2.91	25	2.98	24	3.03	23	3.07	22	3.07	22											
10513		10310		10092		9854		9602		9109		8642		8181		7654		5803										1195
3.12	36	3.16	33	3.19	31	3.22	29	3.26	27	3.32	26	3.38	25	3.43	24	3.45	24	3.31	23									

Performance shown is for Type A: free inlet, free outlet. Performance ratings do not include the effects of appurtenances in the airstream.

Power ratings (BHP) do not include drive losses. Bearing losses are included.

The sound ratings shown are loudness values in fan sones at 5 ft. (1.5 m) in a hemispherical free field calculated per AMCA Standard 301. Values shown are for installation Type A: free inlet fan sone levels.

CRBA30 Performance Data

CFM at Static Pressure																		RPM Range							RPM			
0.00		.125		.250		.375		.500		.750		1.00		1.25		1.50		2.00		Motor HP								
BHP	Sone	BHP	Sone	BHP	Sone	BHP	Sone	BHP	Sone	BHP	Sone	BHP	Sone	BHP	Sone	BHP	Sone	BHP	Sone	1/2	3/4	1	1 1/2	2	3	5		
6380		5549		4719																							400	
0.33	6.0	0.34	5.3	0.35	4.8																							
7034		6283		5505		4588																					441	
0.44	7.1	0.46	6.5	0.47	5.9	0.47	5.7																					
7528		6828		6097		5413		3187																			472	
0.54	8.1	0.56	7.4	0.57	6.9	0.58	6.6	0.50	6.5																			
8325		7693		7042		6398		5696																			522	
0.73	10.0	0.75	9.2	0.76	8.7	0.78	8.4	0.78	8.2																			
8868		8274		7671		7046		6480																			556	
0.88	11.5	0.90	10.7	0.92	10.1	0.93	9.7	0.95	9.5																			
9474		8918		8358		7771		7221																			594	
1.08	13.3	1.10	12.4	1.12	11.8	1.13	11.4	1.15	11.1																			
9888		9356		8821		8263		7716		6348																	620	
1.22	14.5	1.25	13.7	1.27	13.1	1.28	12.6	1.30	12.3	1.30	12.0																	
10335		9825		9315		8787		8251		7203																	648	
1.40	15.6	1.42	14.8	1.44	14.1	1.46	13.6	1.48	13.3	1.50	13.0																	
10734		10243		9752		9249		8727		7771																	673	
1.57	16.6	1.59	15.8	1.61	15.1	1.63	14.6	1.65	14.2	1.68	13.9																	
11244		10776		10307		9831		9335		8412		6811															705	
1.80	17.9	1.82	17.0	1.85	16.4	1.87	15.8	1.88	15.5	1.93	15.0	1.87	14.9															
11802		11356		10910		10460		9993		9082		8104															740	
2.08	19.3	2.11	18.4	2.13	17.8	2.16	17.2	2.17	16.8	2.22	16.3	2.23	16.1															
12281		11852		11423		10992		10549		9654		8822		6474													770	
2.35	21	2.37	19.8	2.40	19.0	2.43	18.4	2.44	18.0	2.49	17.4	2.52	17.2	2.33	17.1													
12807		12396		11985		11572		11152		10284		9497		8296													803	
2.66	22	2.68	21	2.72	21	2.75	19.8	2.76	19.3	2.81	18.7	2.86	18.4	2.82	18.3													
13238		12840		12442		12044		11640		10798		10020		9132													830	
2.94	23	2.96	22	2.99	22	3.03	21	3.05	21	3.09	19.8	3.15	19.4	3.15	19.3													
13668		13283		12898		12512		12123		11311		10534		9777		7950											857	
3.23	25	3.26	24	3.29	23	3.33	22	3.35	22	3.39	21	3.45	21	3.48	20	3.33	20											
14354		13987		13620		13254		12885		12120		11355		10662		9751											900	
3.75	27	3.77	26	3.81	25	3.84	24	3.87	24	3.91	23	3.97	22	4.02	22	4.01	22											
14992		14641		14290		13939		13586		12863		12118		11432		10738											940	
4.27	29	4.29	28	4.33	27	4.37	26	4.40	26	4.44	25	4.49	24	4.56	24	4.59	24											
15710		15374		15039		14704		14369		13686		12974		12289		11662		8885									985	
4.91	31	4.94	30	4.97	30	5.01	29	5.05	28	5.10	27	5.14	27	5.22	26	5.27	26	5.00	26									
16156		15830		15504		15179		14853		14192		13503		12824		12204		10388										1013
5.34	33	5.37	32	5.40	31	5.45	31	5.49	30	5.54	29	5.58	28	5.65	28	5.72	27	5.65	27									

Performance shown is for Type A: free inlet, free outlet. Performance ratings do not include the effects of appurtenances in the airstream. Power ratings (BHP) do not include drive losses. Bearing losses are included. The sound ratings shown are loudness values in fan sones at 5 ft. (1.5 m) in a hemispherical free field calculated per AMCA Standard 301. Values shown are for installation Type A: free inlet fan sone levels.

CRBA36 Performance Data

CFM at Static Pressure																		RPM Range Motor HP							RPM			
0.00		.125		.250		.375		.500		.750		1.00		1.25		1.50		2.00		3/4	1	1 1/2	2	3		5	7 1/2	
BHP	Sone	BHP	Sone	BHP	Sone	BHP	Sone	BHP	Sone	BHP	Sone	BHP	Sone	BHP	Sone	BHP	Sone	BHP	Sone	BHP	Sone							
8128		6712		4084																							276	
0.30	4.7	0.32	3.9	0.31	3.4																							
8982		7727		6042																							305	
0.41	5.8	0.43	4.9	0.44	4.4																							
9747		8601		7241																							331	
0.52	7.0	0.54	6.0	0.56	5.5																							
10601		9547		8379		6621																					360	
0.67	8.5	0.69	7.5	0.71	7.0	0.71	6.5																					
11514		10539		9517		8249																					391	
0.86	10.4	0.88	9.2	0.91	8.7	0.92	8.2																					
12692		11802		10917		9885		8527																			431	
1.15	13.1	1.17	11.9	1.20	11.3	1.22	10.9	1.23	10.3																			
13546		12709		11894		10971		9898																			460	
1.40	14.8	1.42	13.6	1.46	13.0	1.48	12.6	1.50	12.1																			
14518		13733		12979		12159		11234		8282																	493	
1.72	16.6	1.75	15.4	1.78	14.7	1.81	14.3	1.83	14.0	1.81	12.9																	
15313		14567		13852		13101		12256		10012																	520	
2.02	18.1	2.05	16.9	2.08	16.2	2.12	15.7	2.14	15.4	2.16	14.3																	
16108		15397		14716		14019		13244		11393																	547	
2.35	19.8	2.38	18.6	2.42	17.7	2.46	17.2	2.48	16.9	2.52	16.0																	
16932		16255		15604		14952		14242		12612		9967															575	
2.73	22	2.76	20	2.80	19.4	2.84	18.9	2.87	18.5	2.92	17.8	2.89	16.7															
17816		17171		16549		15935		15284		13805		11815															605	
3.18	23	3.21	22	3.25	21	3.29	21	3.33	20	3.39	19.7	3.40	18.5															
18464		17841		17238		16647		16032		14642		12937		9976													627	
3.54	25	3.57	24	3.61	23	3.66	22	3.70	22	3.76	21	3.80	20	3.70	19.2													
19288		18691		18112		17546		16969		15678		14189		11945													655	
4.03	27	4.07	26	4.11	25	4.16	24	4.20	23	4.27	23	4.33	22	4.29	21													
20172		19600		19044		18502		17957		16761		15410		13668		10780											685	
4.61	29	4.65	28	4.69	27	4.74	26	4.79	26	4.87	25	4.93	24	4.95	23	4.81	22											
21055		20506		19972		19451		18932		17820		16568		15111		12924											715	
5.25	32	5.28	30	5.32	29	5.37	28	5.43	28	5.52	27	5.58	27	5.63	25	5.58	24											
21821		21291		20774		20269		19770		18720		17540		16227		14472											741	
5.84	34	5.88	32	5.92	31	5.97	30	6.03	30	6.12	29	6.19	29	6.26	28	6.26	26											
22822		22315		21819		21334		20856		19875		18781		17588		16177											775	
6.68	37	6.72	35	6.76	34	6.81	33	6.87	32	6.98	32	7.06	31	7.13	31	7.18	29											
23853		23367		22891		22425		21967		21041		20029		18923		17704		13874									810	
7.63	40	7.67	38	7.71	37	7.76	36	7.82	36	7.94	35	8.03	34	8.10	33	8.18	33	8.05	31									

Performance shown is for Type A: free inlet, free outlet. Performance ratings do not include the effects of appurtenances in the airstream. Power ratings (BHP) do not include drive losses. Bearing losses are included. The sound ratings shown are loudness values in fan sones at 5 ft. (1.5 m) in a hemispherical free field calculated per AMCA Standard 301. Values shown are for installation Type A: free inlet fan sone levels.

CRBA52 Performance Data

CFM at Static Pressure																RPM Range						RPM			
0.00		.125		.250		.375		.500		.750		1.00		1.25		1.50		Motor HP							
BHP	Sone	BHP	Sone	BHP	Sone	BHP	Sone	BHP	Sone	BHP	Sone	BHP	Sone	BHP	Sone	BHP	Sone	1 1/2	2	3	5	7 1/2	10		
17671		14598		9727																					205
0.71	4.9	0.75	4.2	0.69	3.9																				
19395		16562		13111																					225
0.93	5.9	0.98	5.3	0.97	4.8																				
21119		18509		15810		10531																			245
1.21	7.2	1.26	6.4	1.27	6.1	1.15	5.8																		
22843		20449		18093		14425																			265
1.53	8.6	1.59	7.7	1.62	7.3	1.56	7.0																		
24567		22371		20154		17404		12676																	285
1.90	10.2	1.96	9.1	2.01	8.7	1.99	8.5	1.83	8.0																
26032		23984		21839		19601		15994																	302
2.26	11.7	2.33	10.6	2.38	10.1	2.39	9.9	2.29	9.3																
28446		26602		24570		22735		20222																	330
2.95	14.5	3.02	13.1	3.09	12.5	3.12	12.3	3.09	12.1																
29997		28264		26323		24578		22545		15272															348
3.46	16.3	3.54	15.0	3.61	14.2	3.65	14.0	3.65	13.9	3.31	12.6														
31463		29820		27974		26267		24519		18742															365
3.99	18.2	4.07	16.8	4.15	16.0	4.21	15.7	4.23	15.6	4.01	14.4														
32669		31096		29328		27641		26036		21078															379
4.47	19.8	4.55	18.4	4.63	17.5	4.70	17.1	4.73	17.0	4.58	16.1														
34307		32816		31154		29492		27994		23907		16647													398
5.17	22	5.26	21	5.35	19.7	5.42	19.1	5.47	19.0	5.39	18.4	4.86	17.0												
36204		34799		33248		31633		30187		26844		21377													420
6.08	25	6.18	23	6.27	22	6.35	21	6.41	21	6.41	20	6.09	19.0												
38272		36949		35507		33967		32538		29691		25323		18344											444
7.18	27	7.28	25	7.38	24	7.47	23	7.54	23	7.61	22	7.40	21	6.72	20										
40686		39448		38112		36673		35265		32707		29316		24335		15163									472
8.63	30	8.74	28	8.84	27	8.94	26	9.03	25	9.14	25	9.05	24	8.68	23	7.26	22								
42669		41492		40233		38877		37503		35045		32229		28097		22273									495
9.95	32	10.07	30	10.18	29	10.28	28	10.38	28	10.51	27	10.52	27	10.25	26	9.60	24								
43962		42821		41607		40304		38961		36537		33982		30319		25373									510
10.89	34	11.00	32	11.12	31	11.23	30	11.33	29	11.48	28	11.52	28	11.32	28	10.84	26								

Performance shown is for Type A: free inlet, free outlet. Performance ratings do not include the effects of appurtenances in the airstream. Power ratings (BHP) do not include drive losses. Bearing losses are included. The sound ratings shown are loudness values in fan sones at 5 ft. (1.5 m) in a hemispherical free field calculated per AMCA Standard 301. Values shown are for installation Type A: free inlet fan sone levels.

Standard Features

CRBA Units

Weather-resistant aluminum motor compartment cover removes easily for access to motor and drives.

Out-of-airstream open drip-proof motors are isolated for protection from exhaust airstream.

Belt drive with adjustable motor pulley provides flexibility to match operating requirements.

Heavy duty pillow-block ball bearings with cast iron housing are self-aligning and relubricable.

Aluminum centrifugal wheel is a non-overloading, backward-inclined design and is computer balanced.

Permanently affixed wheel balance weights assure vibration-free operation.

Wheel backplate fins cool the motor compartment, extending motor life.

Overlapping wheel and deep-spun venturi minimize noise and air turbulence, increasing efficiency.

Birdscreen is galvanized steel mesh.

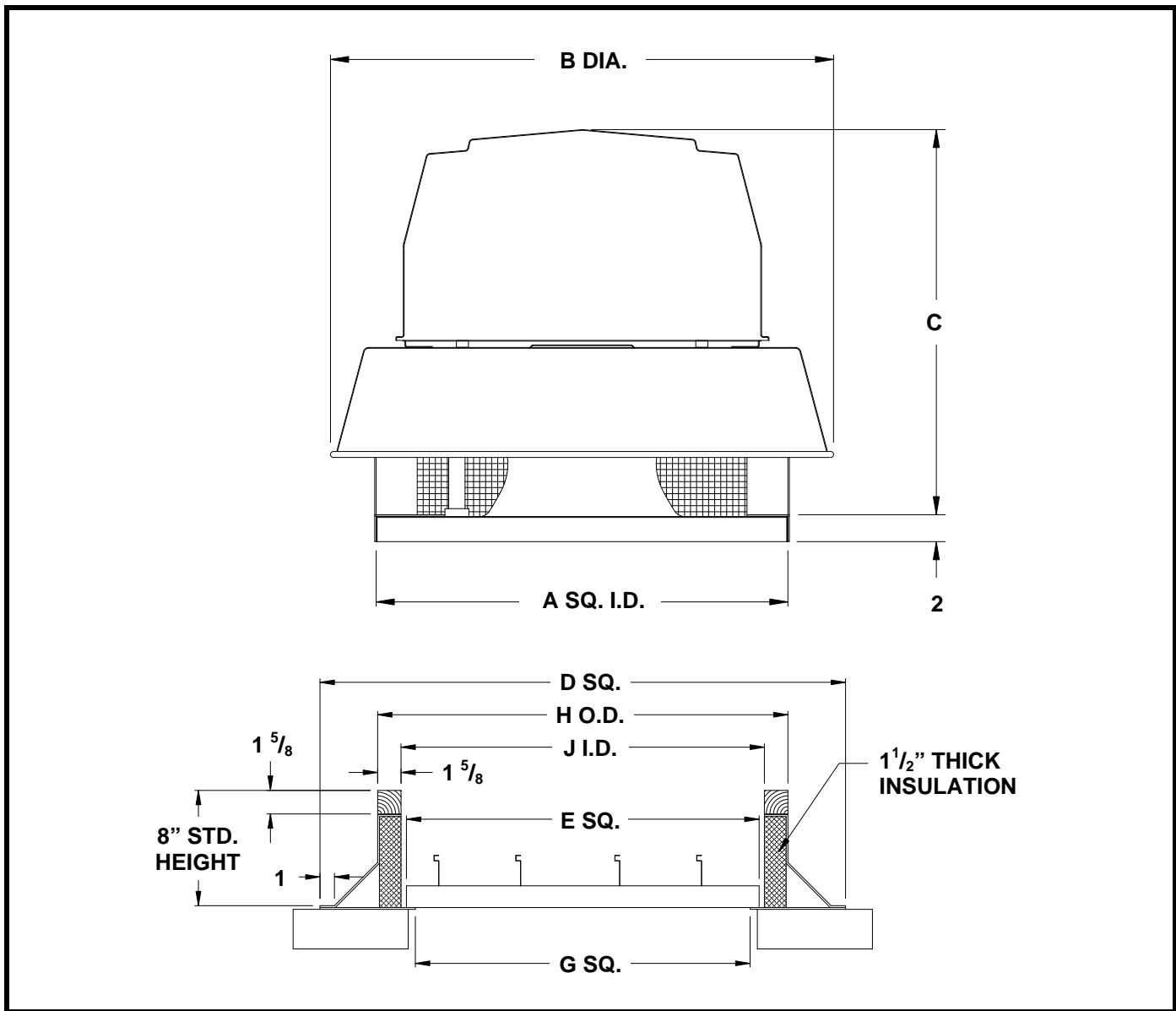
Single bolt motor adjustment facilitates maintenance of belt tension.

AMCA Seal assures certified rating of air and sound performance.

UL listed for Standard 705.



CRBA Ventilator, Roof Curb and Damper Dimensions



Size	Ventilator Dimensions			Roof Curb and Damper Dimensions				
	A	B	C	D	E	G	H	J
06, 08, 10	18	23 1/8	20 1/2	24 1/2	12 3/4	11 1/4	16 1/2	13 1/4
12, 13, 15	23	28 5/8	22 1/2	29 1/2	17 3/4	16 1/4	21 1/2	18 1/4
16, 18, 20	30	35 1/2	24 5/8	36 1/2	24 3/4	23 1/4	28 1/2	25 1/4
24	34	42 3/4	32 1/2	40 1/2	28 3/4	27 1/4	32 1/2	29 1/4
30	40	50 1/4	36 3/4	46 1/2	34 3/4	33 1/4	38 1/2	35 1/4
36	46	61 3/4	44 1/4	52 1/2	40 3/4	39 1/4	44 1/2	41 1/4
44	56	71 1/4	49	62 1/2	50 3/4	49 1/4	54 1/2	51 1/4
52	65	83 3/4	55 1/2	71 1/2	59 3/4	58 1/4	63 1/2	60 1/4

Dimensions in inches

Installation

Most models are shipped fully assembled and ready for installation. Always inspect equipment for transit damage before accepting delivery to assure a valid claim. Special handling and storage procedures are required if unit is to remain idle for an extended period of time prior to installation.

Placement

All belt-driven units must be accessibly installed for maintenance and servicing of belts, bearings, motors and pulleys. Horizontal installation only is recommended to assure satisfactory damper operation.

Mounting

Satisfactory operation of roof ventilators requires mounting on adequately designed and constructed roof curbs. Prefabricated curbs for convenience in installation are available from ILG. Install with base of unit horizontal. Provide adequate caulking, flashing or other weatherproofing means.

Inspection

Check centrifugal wheel for free rotation.

Check belt for proper tension.

Check bearings for proper and secure locking to drive shaft.

Check motor and fan sheave faces for proper alignment.

Check circuit phase, voltage and wiring connection against that shown on motor nameplate.

Check direction of fan rotation for proper air flow.

After one week of operation, check belt for proper tension.

Maintenance

Units should be checked monthly for the first two or three months and periodically thereafter. Units should be cleaned periodically and checked for eroded parts which should be replaced to avoid structural damage and possible failure. Proper lubrication is the most important maintenance requirement. Fan bearings should be lubricated based on usage and operating conditions. Motor bearings should be lubricated according to the motor manufacturer's instructions.

Adjustment of Variable Pitch Pulley and Belt

Variable pitch pulley may be adjusted within catalog RPM range to alter performance without motor overload. Pulley alignment and belt tension should be adjusted if necessary. Inspection every 6 to 12 months is recommended.

Options & Accessories

Prefabricated Roof Curbs

Insulated roof curbs with weather-resistant continuous welded construction are available for convenience in installation for both insulated and non-insulated roof decks.

Special Motors

Two-speed, totally enclosed, energy efficient and explosion-proof motors for hazardous locations may be available for many models. Motor requirements may affect UL Listing.

Backdraft Dampers

Gravity or motor operated backdraft dampers are available. They are aluminum construction and designed for installation in prefabricated roof curbs.

Safety Disconnects

Safety disconnects cut power to motor for servicing of unit. A disconnect switch is an option for CRBA units, and may be shipped loose for field installation or factory mounted and wired.

Protective Coatings

Fan units are not recommended for exhausting air of a corrosive nature. However, special protective coatings are available where units may be exposed to corrosive exterior conditions. Parts requiring painting are processed through the American Coolair five-stage pretreatment system prior to the application of any coatings to insure maximum finish adhesion. These parts use a thermosetting epoxy powder paint with an average thickness of 3 mils and baked at 400° F to a smooth, hard continuous finish. Consult your ILG Industries representative for available coatings.

Roof Handle

Aluminum handle facilitates removal of roof.

WARNING

CAUTION



DO NOT INSTALL FAN WITH MOVING PARTS WITHIN 8 FEET OF FLOOR OR GRADE LEVEL WITHOUT A GUARD THAT COMPLIES WITH OSHA REGULATIONS. **DO NOT** USE UNLESS ELECTRICAL WIRING COMPLIES WITH ALL APPLICABLE CODES. **DO NOT** WIRE WITHOUT PROVIDING FOR A POWER SOURCE DISCONNECT AT THE FAN ITSELF. **DO NOT** SERVICE EXCEPT BY A QUALIFIED MAINTENANCE TECHNICIAN AND ONLY AFTER DISCONNECTING THE POWER SOURCE. FAILURE TO OBSERVE THESE PRECAUTIONS CAN RESULT IN SERIOUS INJURY OR DEATH.

To convert air performance (CFM and SP) and power (BHP) to metric units, multiply CFM x .000472 to obtain cubic meters per second (m³/s). Multiply SP x 248.36 to obtain Pa (Pa). Multiply BHP x .7457 to obtain kilowatts (kW).

Example: 3904 CFM x .000472 = 1.8427 Cubic meters per second
0.125 SP x 248.36 = 31.05 Pascals
0.886 BHP x .7457 = 0.661 Kilowatts

CRBA Specification Checklist

Units provide general exhaust of low, medium or high air volumes in commercial, institutional and light manufacturing buildings.

Centrifugal design has advantages of compact, attractive appearance, quiet operation and performance against higher static pressures.

Variable pitch drive with single bolt belt tension allows for speed adjustment and proper belt tension.

Weatherproof heavy duty aluminum housing and motor compartment cover resist corrosion and maintain appearance.

Deep-spun, overlapping, one-piece venturi minimizes noise, reduces air turbulence and improves efficiency.

Aluminum centrifugal wheel is quiet, non-overloading, backward-inclined design and is computer balanced.

Standard open drip-proof motor is out of the airstream for protection.

Motor compartment is cooled by a forced air ventilation system, extending motor life.

UL Label (UL 705) for general ventilation is standard.

Conduit raceway allows for ease in connecting to power supply.

AMCA Seal assures certified rating of air and sound performance.

Birdscreen prevents entry of birds or other potentially damaging objects.

Heavy duty neoprene isolators eliminate metal-to-metal contact, reducing vibration and sound.

Heavy duty pillow-block bearings with cast iron housing are self-aligning and relubricable.

Limited Warranty

In the sale of its products, American Coolair Corporation agrees to correct, by repairs or replacement, any defects in workmanship or material that may develop under proper and normal use during the period of one year from the date of shipment from the factory. Any product or part proving, upon American Coolair's examination, to be defective during limited warranty period will be repaired or replaced, at American Coolair's option, f.o.b. factory, without charge.

Deterioration or wear caused by chemicals, abrasive action or excessive heat shall not constitute defects.

Motors are guaranteed only to the extent of the manufacturer's warranty.

American Coolair's limited warranty does not apply to any of its products or parts that have been subject to accidental damage, misuse by the user, unauthorized alterations, improper installation or electrical wiring, or lack of proper lubrication or other service requirements as established by American Coolair.

Repairs or replacements provided under the above terms shall constitute fulfillment of all American Coolair's obligations with respect to limited warranty.

THE LIMITED WARRANTY STATED HEREIN IS IN LIEU OF ALL OTHER WARRANTIES, EXPRESS, STATUTORY OR IMPLIED, INCLUDING WITHOUT LIMITATION THAT OF MERCHANTABILITY AND FITNESS.

NO LIABILITY FOR REINSTALLATION COST OR FOR ANY SPECIAL, INDIRECT OR CONSEQUENTIAL DAMAGES OF ANY NATURE IS ASSUMED OR SHALL BE IMPOSED UPON AMERICAN COOLAIR.



AMERICAN COOLAIR CORPORATION

REPRESENTED BY:
