



GASMASTER

Gasmaster Supreme Boiler & Combi Boiler

Over 10,000 boilers sold across Canada in all climates

Proudly **MADE IN CANADA**



Gasmaster Supreme Boiler

Same great features:

94% AFUE efficient

Simple to install saving installer time and money and homeowner valuable space

2 models: Combi boilers supply all your on demand hot water and home heating needs and H model provides heating and hot water via an indirect tank

Universal parts on all models and unique construction making Gasmaster the easiest to service boiler on the market



GASMASTER

Parts included in ALL boilers:

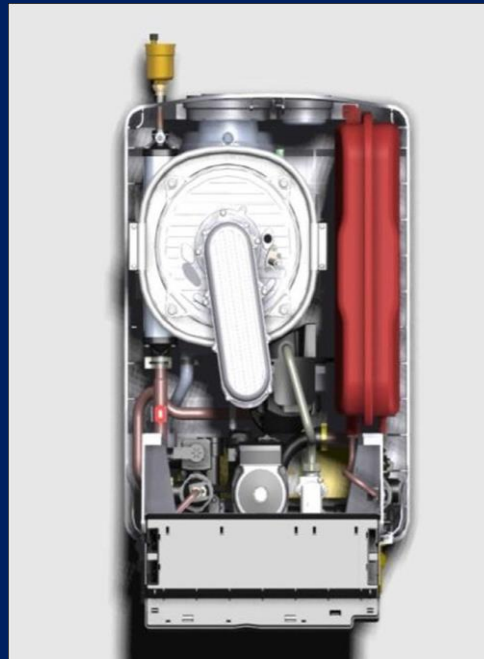
Grundfos variable speed pump

12L pre-charged expansion tank

Stainless Steel heat exchanger

Unique gas valve: cleaner burning, self adjusting and interchangeable between NG & LP

Simple to use controls and LCD screen



Domestic Hot Water (R model units)*		R100	R140	R200
Nominal Input in DHW Mode	Btu / hr	16,000 - 105,000	19,800 - 137,000	26,900 - 185,000
Max Output in DHW mode	Btu / hr	95,000	122,000	167,000
Tap water with $\Delta T = 90^{\circ}\text{F}$ in C Models	usg / minute	2.1	2.6	4
Tap water with $\Delta T = 70^{\circ}\text{F}$ in C Models	usg / minute	3.4	4.2	6.6
Central Heating Operation		R100	R140	R200
Nominal input (0-2000ft) in CH mode	Btu/hr	16 - 90,800	19,800 - 113,600	26,900 - 159,000
Max. Output (0-2000ft) in CH mode	Btu/hr	85,000	106,500	150,000

Gasmaster Combi boilers continuous hot water output for cold weather climates**:

**hot water production will increase or decrease depending on climate and incoming water temperature and all figures below are approximations

R100



R140



R200



For more info go to: gasmaster.ca