

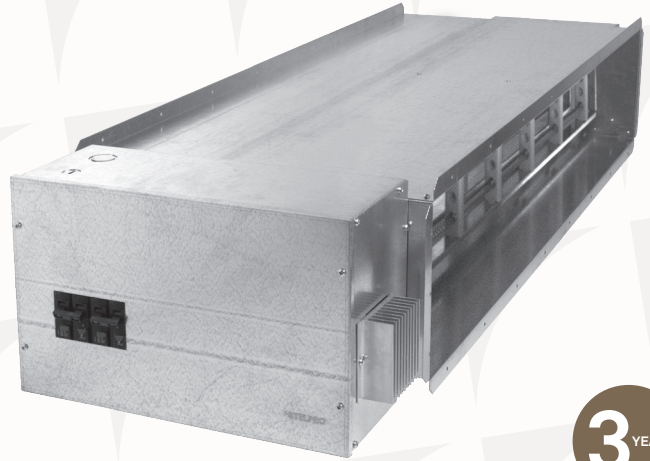
°STELPRO

ELECTRIC DUCT HEATER

FOR DUCTED PEFY, PEAD AND SEZ SYSTEMS – SDHF-OEMM SERIES

CUSTOMIZED COMFORT!

°STELPRO's OEMM series electric duct heaters are specifically designed to complement the PEFY, PEAD et SEZ units by Mitsubishi Electric® with a back-up electric heat source.



MODULAR ELECTRIC SECTION

FACILITATING THE INSTALLATION AND MAINTENANCE

ULTRA-PRECISE AIR VELOCITY SENSOR

DESIGNED FOR OPTIMAL COMPATIBILITY

3-YEAR WARRANTY

MADE IN CANADA

FINISH

20 to 16 gauge galvanized steel cabinet resistant to corrosion

MANUFACTURING

– double thermal protections (manual and automatic)

ELEMENTS

- open, nichrome elements
- modulation of the elements by the SCR technology to maintain a constant temperature using only the required energy

CONTROL

- electronic control
- adjustable electronic temperature sensor
- external electronic air velocity sensor
- certified contactor
- control voltage: 0-10V, 24Vac

INSTALLATION

- “zero inch” clearance from flammable materials
- compatible with Mitsubishi Electric® heater adaptor PAC-YU25HT
- mechanical installation directly after Mitsubishi Electric® fan coil unit



TECHNICAL SPECIFICATIONS

PRODUCT	MITSUBISHI ELECTRIC®	SIZE	POWER	VOLTAGE	CTRL	CTRL SIGNAL
CODE	CODE	PO	KW	VOLTS		
SDHF26X7,1-2,5K240V1P-CIR017-IPT-OEMM	PEFY-P06, 08, 12NMAU-E	26 x 7 1/16	2,5	240-1	CIR017	24Vac - Modulating
SDHF26X7,1-5K240V1P-CIR017-IPT-OEMM		26 x 7 1/16	5	240-1	CIR017	24Vac - Modulating
SDHF33,9X7,1-2,5K240V1P-CIR017-IPT-OEMM	PEFY-P15, 18NMAU-E	33 7/8 x 7 1/16	2,5	240-1	CIR017	24Vac - Modulating
SDHF33,9X7,1-5K240V1P-CIR017-IPT-OEMM		33 7/8 x 7 1/16	5	240-1	CIR017	24Vac - Modulating
SDHF33,9X7,1-7,5K240V1P-CIR017-IPT-OEMM		33 7/8 x 7 1/16	7,5	240-1	CIR017	24Vac - Modulating
SDHF41,4X7,1-5K240V1P-CIR017-IPT-OEMM	PEFY-P24, 27, 30NMAU-E / PEAD-A24AA5, 30AA5	41 3/4 x 7 1/16	5	240-1	CIR017	24Vac - Modulating
SDHF41,4X7,1-10K240V1P-CIR017-IPT-OEMM		41 3/4 x 7 1/16	10	240-1	CIR017	24Vac - Modulating
SDHF41,4X7,1-15K240V1P-CIR017-IPT-OEMM		41 3/4 x 7 1/16	15	240-1	CIR017	24Vac - Modulating
SDHF53,6X7,1-10K240V1P-CIR017-IPT-OEMM	PEFY-P36, 48NMAU-E / PEAD-A36AA5, 42AA5	53 9/16 x 7 1/16	10	240-1	CIR017	24Vac - Modulating
SDHF53,6X7,1-15K240V1P-CIR017-IPT-OEMM		53 9/16 x 7 1/16	15	240-1	CIR017	24Vac - Modulating
SDHF53,6X7,1-20K240V1P-CIR017-IPT-OEMM		53 9/16 x 7 1/16	20	240-1	CIR017	24Vac - Modulating
SDHF61,4X7,1-10K240V1P-CIR017-IPT-OEMM	PEFY-P54NMAU-E	61 7/16 x 7 1/16	10	240-1	CIR017	24Vac - Modulating
SDHF61,4X7,1-15K240V1P-CIR017-IPT-OEMM		61 7/16 x 7 1/16	15	240-1	CIR017	24Vac - Modulating
SDHF61,4X7,1-20K240V1P-CIR017-IPT-OEMM		61 7/16 x 7 1/16	20	240-1	CIR017	24Vac - Modulating
SDHF26X5,9-2,5K240V1P-CIR017-IPT-OEMM	PEFY-P06, 08, 12NMSU-E, SEZ-KD09NA	26 x 5 29/32	2,5	240-1	CIR017	24Vac - Modulating
SDHF26X5,9-5K240V1P-CIR017-IPT-OEMM		26 x 5 29/32	5	240-1	CIR017	24Vac - Modulating
SDHF33,9X5,9-2,5K240V1P-CIR017-IPT-OEMM	PEFY-P15, 18NMSU-E, SEZ-KD12NA, SEZ-KD15NA	33 7/8 x 5 29/32	2,5	240-1	CIR017	24Vac - Modulating
SDHF33,9X5,9-5K240V1P-CIR017-IPT-OEMM		33 7/8 x 5 29/32	5	240-1	CIR017	24Vac - Modulating
SDHF33,9X5,9-7,5K240V1P-CIR017-IPT-OEMM		33 7/8 x 5 29/32	7,5	240-1	CIR017	24Vac - Modulating
SDHF41,8X5,9-5K240V1P-CIR017-IPT-OEMM	PEFY-P24NMSU-E, SEZ-KD18NA	41 3/4 x 5 29/32	5	240-1	CIR017	24Vac - Modulating
SDHF41,8X5,9-10K240V1P-CIR017-IPT-OEMM		41 3/4 x 5 29/32	10	240-1	CIR017	24Vac - Modulating
SDHF41,8X5,9-15K240V1P-CIR017-IPT-OEMM		41 3/4 x 5 29/32	15	240-1	CIR017	24Vac - Modulating
SDHF21,7X9,9-2,5K240V1P-CIR017-IPT-OEMM	PEFY-P15, 18, 24NMHU-E	21 11/16 x 9 7/8	2,5	240-1	CIR017	24Vac - Modulating
SDHF21,7X9,9-5K240V1P-CIR017-IPT-OEMM		21 11/16 x 9 7/8	5	240-1	CIR017	24Vac - Modulating
SDHF21,7X9,9-10K240V1P-CIR017-IPT-OEMM		21 11/16 x 9 7/8	7,5	240-1	CIR017	24Vac - Modulating
SDHF32,9X9,9-5K240V1P-CIR017-IPT-OEMM	PEFY-P27, 30NMHU-E	32 7/8 x 9 7/8	5	240-1	CIR017	24Vac - Modulating
SDHF32,9X9,9-10K240V1P-CIR017-IPT-OEMM		32 7/8 x 9 7/8	10	240-1	CIR017	24Vac - Modulating
SDHF39,4X9,9-10K240V1P-CIR017-IPT-OEMM	PEFY-P36, 48, 54NMHU-E	39 3/8 x 9 7/8	10	240-1	CIR017	24Vac - Modulating
SDHF39,4X9,9-15K240V1P-CIR017-IPT-OEMM		39 3/8 x 9 7/8	15	240-1	CIR017	24Vac - Modulating
SDHF39,4X9,9-20K240V1P-CIR017-IPT-OEMM		39 3/8 x 9 7/8	20	240-1	CIR017	24Vac - Modulating
SDHF26X7,1-2,5K600V3P-CIR017-LPT-OEMM	PEFY-P06, 08, 12NMAU-E	26 x 7 1/16	2,5	600-3	CIR017	24Vac - Modulating
SDHF26X7,1-5K600V3P-CIR017-LPT-OEMM		26 x 7 1/16	5	600-3	CIR017	24Vac - Modulating
SDHF33,9X7,1-2,5K600V3P-CIR017-LPT-OEMM	PEFY-P15, 18NMAU-E	33 7/8 x 7 1/16	2,5	600-3	CIR017	24Vac - Modulating
SDHF33,9X7,1-5K600V3P-CIR017-LPT-OEMM		33 7/8 x 7 1/16	5	600-3	CIR017	24Vac - Modulating
SDHF33,9X7,1-7,5K600V3P-CIR017-LPT-OEMM		33 7/8 x 7 1/16	7,5	600-3	CIR017	24Vac - Modulating
SDHF41,8X7,1-5K600V3P-CIR017-LPT-OEMM	PEFY-P24, 27, 30NMAU-E / PEAD-A24AA5, 30AA5	41 3/4 x 7 1/16	5	600-3	CIR017	24Vac - Modulating
SDHF41,8X7,1-10K600V3P-CIR017-LPT-OEMM		41 3/4 x 7 1/16	10	600-3	CIR017	24Vac - Modulating
SDHF41,8X7,1-15K600V3P-CIR017-LPT-OEMM		41 3/4 x 7 1/16	15	600-3	CIR017	24Vac - Modulating
SDHF53,6X7,1-10K600V3P-CIR017-LPT-OEMM	PEFY-P36, 48NMAU-E / PEAD-A36AA5, 42AA5	53 9/16 x 7 1/16	10	600-3	CIR017	24Vac - Modulating
SDHF53,6X7,1-15K600V3P-CIR017-LPT-OEMM		53 9/16 x 7 1/16	15	600-3	CIR017	24Vac - Modulating
SDHF53,6X7,1-20K600V3P-CIR017-LPT-OEMM		53 9/16 x 7 1/16	20	600-3	CIR017	24Vac - Modulating
SDHF61,4X7,1-10K600V3P-CIR017-LPT-OEMM	PEFY-P54NMAU-E	61 7/16 x 7 1/16	10	600-3	CIR017	24Vac - Modulating
SDHF61,4X7,1-15K600V3P-CIR017-LPT-OEMM		61 7/16 x 7 1/16	15	600-3	CIR017	24Vac - Modulating
SDHF61,4X7,1-20K600V3P-CIR017-LPT-OEMM		61 7/16 x 7 1/16	20	600-3	CIR017	24Vac - Modulating
SDHF26X5,9-2,5K600V3P-CIR017-LPT-OEMM	PEFY-P06, 08, 12NMSU-E, SEZ-KD09NA	26 x 5 29/32	2,5	600-3	CIR017	24Vac - Modulating
SDHF26X5,9-5K600V3P-CIR017-LPT-OEMM		26 x 5 29/32	5	600-3	CIR017	24Vac - Modulating
SDHF33,9X5,9-2,5K600V3P-CIR017-LPT-OEMM	PEFY-P15, 18NMSU-E, SEZ-KD12NA, SEZ-KD15NA	33 7/8 x 5 29/32	2,5	600-3	CIR017	24Vac - Modulating
SDHF33,9X5,9-5K600V3P-CIR017-LPT-OEMM		33 7/8 x 5 29/32	5	600-3	CIR017	24Vac - Modulating
SDHF33,9X5,9-7,5K600V3P-CIR017-LPT-OEMM		33 7/8 x 5 29/32	7,5	600-3	CIR017	24Vac - Modulating
SDHF41,8X5,9-5K600V3P-CIR017-LPT-OEMM	PEFY-P24NMSU-E, SEZ-KD18NA	41 3/4 x 5 29/32	5	600-3	CIR017	24Vac - Modulating
SDHF41,8X5,9-10K600V3P-CIR017-LPT-OEMM		41 3/4 x 5 29/32	10	600-3	CIR017	24Vac - Modulating
SDHF41,8X5,9-15K600V3P-CIR017-LPT-OEMM		41 3/4 x 5 29/32	15	600-3	CIR017	24Vac - Modulating
SDHF21,7X9,9-2,5K600V3P-CIR017-LPT-OEMM	PEFY-P15, 18, 24NMHU-E	21 11/16 x 9 7/8	2,5	600-3	CIR017	24Vac - Modulating
SDHF21,7X9,9-5K600V3P-CIR017-LPT-OEMM		21 11/16 x 9 7/8	5	600-3	CIR017	24Vac - Modulating
SDHF21,7X9,9-10K600V3P-CIR017-LPT-OEMM		21 11/16 x 9 7/8	7,5	600-3	CIR017	24Vac - Modulating
SDHF32,9X9,9-5K600V3P-CIR017-LPT-OEMM	PEFY-P27, 30NMHU-E	32 7/8 x 9 7/8	5	600-3	CIR017	24Vac - Modulating
SDHF32,9X9,9-10K600V3P-CIR017-LPT-OEMM		32 7/8 x 9 7/8	10	600-3	CIR017	24Vac - Modulating
SDHF39,4X9,9-10K600V3P-CIR017-LPT-OEMM	PEFY-P36, 48, 54NMHU-E	39 3/8 x 9 7/8	10	600-3	CIR017	24Vac - Modulating
SDHF39,4X9,9-15K600V3P-CIR017-LPT-OEMM		39 3/8 x 9 7/8	15	600-3	CIR017	24Vac - Modulating
SDHF39,4X9,9-20K600V3P-CIR017-LPT-OEMM		39 3/8 x 9 7/8	20	600-3	CIR017	24Vac - Modulating

For units with a different electric specification, it is possible to order custom units. Delivery will change.

For information on Mitsubishi Electric® units, please contact your Mitsubishi Electric® representative.

Mitsubishi Electric is a registered trade-mark of the Mitsubishi Electric Corporation of Japan. Used under License. All Rights Reserved.

TECHNICAL SPECIFICATIONS

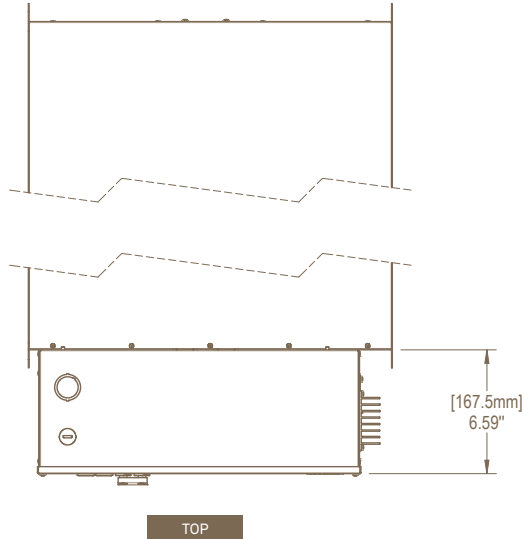
PRODUCT	MITSUBISHI ELECTRIC®	SIZE	POWER	VOLTAGE	CTRL	CTRL SIGNAL
CODE	CODE	IN	KW	VOLTS		
SDHF26X7,1-2,5K600V3P-CIR017-LPT-OEMM	PEFY-P06, 08, 12NMAU-E	26 x 7 1/16	2,5	208-3	CIR017	24Vac - Modulating
SDHF26X7,1-5K600V3P-CIR017-LPT-OEMM		26 x 7 1/16	5			
SDHF33,9X7,1-2,5K600V3P-CIR017-LPT-OEMM	PEFY-P15, 18NMAU-E	33 7/8 x 7 1/16	2,5	208-3	CIR017	24Vac - Modulating
SDHF33,9X7,1-5K600V3P-CIR017-LPT-OEMM		33 7/8 x 7 1/16	5			
SDHF33,9X7,1-7,5K600V3P-CIR017-LPT-OEMM		33 7/8 x 7 1/16	7,5			
SDHF41,8X7,1-5K208V3P-CIR017-LPT-OEMM	PEFY-P24, 27, 30NMAU-E / PEAD-A24AA5, 30AA5	41 3/4 x 7 1/16	5	208-3	CIR017	24Vac - Modulating
SDHF41,8X7,1-10K208V3P-CIR017-LPT-OEMM		41 3/4 x 7 1/16	10			
SDHF41,8X7,1-15K208V3P-CIR017-LPT-OEMM		41 3/4 x 7 1/16	15			
SDHF53,6X7,1-10K208V3P-CIR017-LPT-OEMM	PEFY-P36, 48NMAU-E / PEAD-A36AA5, 42AA5	53 9/16 x 7 1/16	10	208-3	CIR017	24Vac - Modulating
SDHF53,6X7,1-15K208V3P-CIR017-LPT-OEMM		53 9/16 x 7 1/16	15			
SDHF61,4X7,1-10K208V3P-CIR017-LPT-OEMM	PEFY-P54NMAU-E	61 7/16 x 7 1/16	10	208-3	CIR017	24Vac - Modulating
SDHF61,4X7,1-15K208V3P-CIR017-LPT-OEMM		61 7/16 x 7 1/16	15			
SDHF26X5,9-2,5K208V3P-CIR017-LPT-OEMM	PEFY-P06, 08, 12NMSU-E, SEZ-KD09NA	26 x 5 29/32	2,5	208-3	CIR017	24Vac - Modulating
SDHF26X5,9-5K208V3P-CIR017-LPT-OEMM		26 x 5 29/32	5			
SDHF33,9X5,9-2,5K208V3P-CIR017-LPT-OEMM	PEFY-P15, 18NMSU-E, SEZ-KD12NA, SEZ-KD15NA	33 7/8 x 5 29/32	2,5	208-3	CIR017	24Vac - Modulating
SDHF33,9X5,9-5K208V1P-CIR017-LPT-OEMM		33 7/8 x 5 29/32	5			
SDHF33,9X5,9-7,5K208V3P-CIR017-LPT-OEMM		33 7/8 x 5 29/32	7,5			
SDHF41,8X5,9-5K208V3P-CIR017-LPT-OEMM	PEFY-P24NMSU-E, SEZ-KD18NA	41 3/4 x 5 29/32	5	208-3	CIR017	24Vac - Modulating
SDHF41,8X5,9-10K208V3P-CIR017-LPT-OEMM		41 3/4 x 5 29/32	10			
SDHF41,8X5,9-15K208V3P-CIR017-LPT-OEMM		41 3/4 x 5 29/32	15			
SDHF21,7X9,9-2,5K208V3P-CIR017-LPT-OEMM	PEFY-P15, 18, 24NMHU-E	21 11/16 x 9 7/8	2,5	208-3	CIR017	24Vac - Modulating
SDHF21,7X9,9-5K208V3P-CIR017-LPT-OEMM		21 11/16 x 9 7/8	5			
SDHF21,7X9,9-10K208V3P-CIR017-LPT-OEMM		21 11/16 x 9 7/8	7,5			
SDHF32,9X9,9-5K208V3P-CIR017-LPT-OEMM	PEFY-P27, 30NMHU-E	32 7/8 x 9 7/8	5	208-3	CIR017	24Vac - Modulating
SDHF32,9X9,9-10K208V3P-CIR017-LPT-OEMM		32 7/8 x 9 7/8	10			
SDHF39,4X9,9-10K208V3P-CIR017-LPT-OEMM	PEFY-P36, 48, 54NMHU-E	39 3/8 x 9 7/8	10	208-3	CIR017	24Vac - Modulating
SDHF39,4X9,9-15K208V3P-CIR017-LPT-OEMM		39 3/8 x 9 7/8	15			
SDHF39,4X9,9-20K208V3P-CIR017-LPT-OEMM		39 3/8 x 9 7/8	20			

For units with a different electric specification, it is possible to order custom units. Delivery will change.

For information on Mitsubishi Electric® units, please contact your Mitsubishi Electric® representative.

Mitsubishi Electric is a registered trade-mark of the Mitsubishi Electric Corporation of Japan. Used under License. All Rights Reserved.

TECHNICAL DRAWINGS



MODEL	A (IN.)	B (IN.)	C (IN.)
SDHF 21,7X9,9	21,81	10,00	10,50
SDHF 26X5,9	26,13	6,03	9,03
SDHF 26X7,1	26,13	7,19	9,03
SDHF 32,9X9,9	32,88	10,00	10,50
SDHF 33,9X5,9	34,00	6,03	9,03
SDHF 33,9X7,1	34,00	7,19	9,03
SDHF 39,4X9,9	39,50	10,00	10,50
SDHF 41,8X5,9	41,88	6,03	9,03
SDHF 41,8X7,1	41,88	7,19	9,03
SDHF 53,6X7,1	53,69	7,19	9,03
SDHF 61,4X7,1	61,56	7,19	9,03

