



TitanWrap

BUBBLE INSULATIONS DATA SHEET & SPECS



	Single Bubble Foil/White	Single Bubble Foil/Foil	Double Bubble Foil/White	Double Bubble Foil/Foil
	PolyWhite/Bubbles/ Metalized Foil	Metalized Foil/Bubbles/ Metalized Foil	PolyWhite/Bubbles/ Bubbles/Metalized Foil	Metalized Foil/Bubbles/ Bubbles/ Metalized Foil
	One layer of 1/8" durable air bubble film laminated between one layer of reflective metalized film and one layer of white barrier polyethylene	One layer of 1/8" durable air bubble film laminated between two layers of reflective metalized film	Two layers of 1/8" durable air bubble film laminated between one layer of reflective metalized film one layer of white barrier polyethylene	Two layers of 1/8" durable air bubble film laminated between two and layers of reflective metalized film
Contact Temperature Range	-60°F to 180°F (-51°C to 82°C)	-60°F to 180°F (-51°C to 82°C)	-60°F to 180°F (-51°C to 82°C)	-60°F to 180°F (-51°C to 82°C)
Thickness	1/8" nominal	1/8" nominal	1/4" nominal	1/4" nominal
Emittance (Metalized Side)	E=5%	E=5%	E=5%	E=5%
Water Vapor Transmission	.02 perms ASTM E96	.02 perms ASTM E96	.02 perms ASTM E96	.02 perms ASTM E96
Puncture Resistance	60 lbs/in	60 lbs/in	60 lbs/in	60 lbs/in
Tensile Stress (kPa)	TD:1,453 / MD:1,324	TD:1,814 / MD:2,078	TD:1,465 / MD:1,867	TD:2,343 / MD:2,261
Tear Strength (kN/m)	TD:36.33 / MD:33.11	TD:45.34 / MD:51.96	TD:36.64 / MD:46.69	TD:58.58 / MD:56.54
Pliability	No Cracking	No Cracking	No Cracking	No Cracking
Linear Shrinkage	None	None	None	None
Mold and Mildew	No Growth	No Growth	No Growth	No Growth
Flame Spread	0 ASTM E84-08	0 ASTM E84-08	0 ASTM E84-08	0 ASTM E84-08
Smoke Development	20 ASTM E84-08	20 ASTM E84-08	20 ASTM E84-08	20 ASTM E84-08
Fire Rating	ClassA / Class1	ClassA / Class1	ClassA / Class1	ClassA / Class1
R-Values	Single Bubble Foil/White	Single Bubble Foil/Foil	Double Bubble Foil/White	Double Bubble Foil/Foil
Attic - Vented	Radiant Barrier Only	Radiant Barrier Only	Radiant Barrier Only	Radiant Barrier Only
Duct/Pipe Wrap	R-3	R-4	R 3.5	R-6
Crawl Space	R-9.3	R-16.3	R-9.8	R-16.8
Metal Buildings**	R-1.8 Up R-7.1 Down R-2.2 Wall	R-4.6 Up R-11.9 Down R-5.6 Wall	R-2.3 Up R-7.6 Down R-2.7 Wall	R-5.1 Up R-12.4 Down R-6.1 Wall
Post Frame Buildings	R-1.8 Up R-5.1 Down R-2.2 Wall	R-6.4 Up R-14.6 Down R-6.4 Wall	R-2.3 Up R-5.6 Down R-2.7 Wall	R-6.9 Up R-15.1 Down R-6.9 Wall
Radiant Floors	R-9.3	R-16.3	R-9.8	R-16.8
Wall - Basement Masonry	R-2.2	R-5.6	R-3.7	R-7.1
Wall - Garage	R-2.2	R-5.6	R-3.7	R-7.1
Wall-2x6Studw/R-12Batt***	R-18.2	R-18.2	R-19.0	R-19.56

What You Should Know About R-values: The chart shows the R-Value of this insulation. R means resistance to heat flow. The higher the R-Value the greater the insulating power. Compare insulation R-Values before you buy. There are other factors to consider. The amount of insulation you need depends mainly on the climate you live in. Also, your fuel savings from insulation will depend upon the climate, the type and size of your house, the amount of insulation already in your house, and your fuel use patterns and family size. If you buy too much insulation, it will cost you more than what you'll save on fuel. To get the marked R-Value, it is essential that this insulation be installed properly.

* At least a 3/4" air space is required on each foil side to achieve the R-Values quoted.
 ** Depends on the interior of the metal building and sizes of the air spaces provided.
 *** This application consists of Bubble Insulation and mass insulation. See install instructions for info.



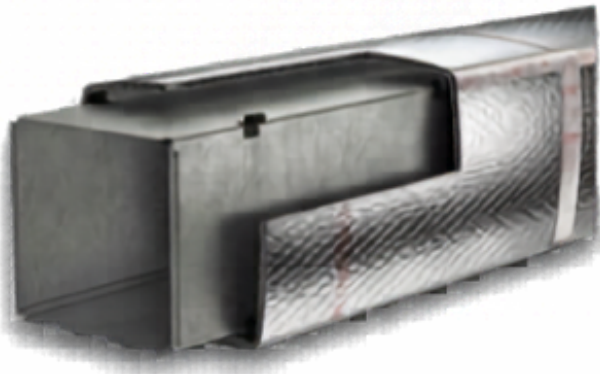
ADDRESS : 94 E. JEFYRN BLVD, UNIT I, DEER PARK 11729 | PHONE 516-256-3131



TitanWrap

BUBBLE INSULATIONS DATA SHEET & SPECS

New Big Bubble 8 Foil/Bubble/Foil Insulation



Designed, manufactured, tested and certified to meet R-8.0 code requirements for all duct types, the **Big Bubble 8 (BB-8)** Reflective Duct Insulation series is a consistent contractor's choice.

An inspector-friendly, easily-visible, code certification ship on the Big 8 means no hassles at the job site and extra peace of mind for installers! Our **BB-8** Reflective Duct Insulation series consists of two layers of thick polyethylene bubble pack reflective insulation, connected by 2-inch wide spacers.

The **BB-8** Reflective Duct Insulation has been tested to an R-8 and is classified as Class 1/Class A in accordance with the ASTM E84-09 the test standard. The product was mounted in accordance to ASTM-E2599-08. The BB-8 is specially designed to reduce radiant heat gain/loss in all residential and commercial duct applications. BB-8 also helps control condensation by providing an outright thermal break around duct work.

Benefits

- Stops virtually all heat from **RADIATING** into or out of duct systems
- Sealed air spaces provide tremendous condensation control
- High compression resistance maintains thermal value
- Clean, safe, and easy insulation results in lower labor costs
- Simple to cut and configure around obstructions
- Will not harbor mold, mildew, or other fungi
- Faster reaction time for radiant floor heating
- Will not rot, degrade, compress or break down thermal value over time
- Seals duct system from attic duct and fibrous glass particles
- Allows inspectors to easily identify product and specs

TitanWrap - Reflective Insulation

Product/Part #		Sq Ft/roll
Tw-SB48X100FF	Foil/Bubble/Foil 48 x 100' (R-4)*	400
Tw-SB72X100FF	Foil/Bubble/Foil 72 x 100' (R-4)*	600
Tw-DB48X75FF	Foil/Double Bubble/Foil 48"x 75' (R-6)*	300
Tw-DB48X100FF	Foil/Double Bubble/Foil 48"x 100' (R-6)*	400
Tw-BB48X50FF	Foil/Big 8 Bubble/Foil 48"x 50' (R-8)*	200

* R Value with 3/4 Air Spacers



ADDRESS : 94 E. JEFRYN BLVD, UNIT I, DEER PARK 11729 | PHONE 516-256-3131