

**The Four Cs:
Community, Collaboration,
Climate and Consistency**

Welcome to Kerhonkson Elementary School!

Go Little Ganders!



- 237 students, K-3
- 2% ELL/MLL
- 59% ED
- 28% ED earning 3-4 on 2017 ELA
- 72% ED earning 2-4 on 2017 ELA



Community

SIT and PTA plan activities and events that are student centered, involve community when possible, and connect to district initiatives

SIT

Support District initiatives and partner with our other schools

District

Increase involvement

Staff

Students

Engage support for school activities and projects, and be cognizant of important community functions

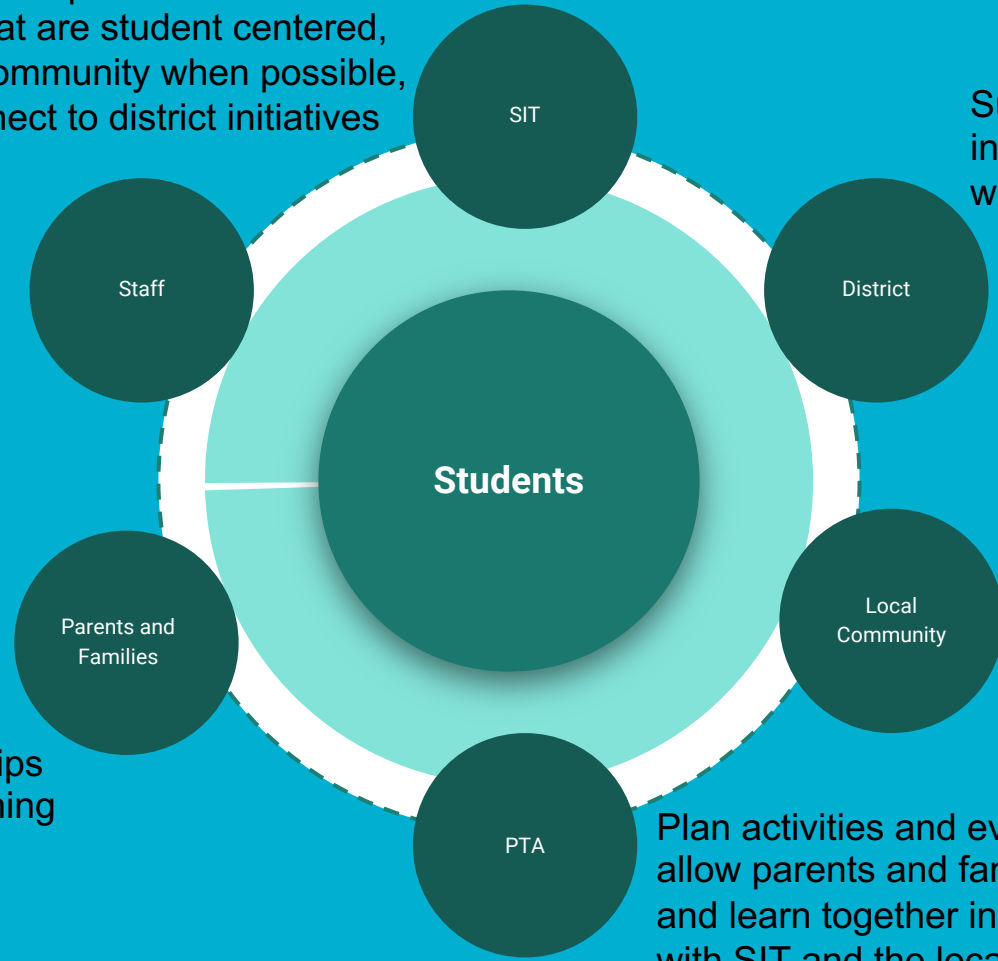
Local Community

Parents and Families

Create partnerships that support learning and emotional wellbeing

PTA

Plan activities and events that allow parents and families to play and learn together in cooperation with SIT and the local community



Student Centered PTA

Plans activities and events that allow parents and families to play and learn together in cooperation with School Improvement Team and the local community

- Back to School BBQ
- Color Run / Craft Fair / Touch-a-Truck
- Trunk or Treat / Firehouse Halloween Parade
- Penny Social / Ornament Night
- Pajama Bingo / Book Fair
- Vanaver Caravan Dance Recital
- Ssip and Paint / Holiday Shoppe
- Family Literacy and Game Night
- Magic Show
- Valentine's Social
- Ssip and Paint / Book Fair
- Spring/Mother's Day Craft Fair
- Spelling Bee
- Field Trips and Field Days

Student Centered School Improvement Team (SIT)

- Monthly PBIS Assemblies
- Friday School Spirit Days
- Lunch with your Pre-K/Kindergarten Student (September 11-14)
- Curriculum Night (September 13)
- Parent Teacher Conferences (October 18-19)
- School-wide pajama day (December 21)
- No Name Calling Week (January 22-25)
- Random Acts of Kindness (February 19-22)
- Read Across America / Dr. Seuss' Birthday (March 1)
- March Madness (March 4-7)
- Field Days (June 17-21)
- Summer Reading Challenge
- Summer Math Challenge

Increase staff involvement in the planning process



Identify activities they can get behind and support



Involve Community Clubs and Organizations

- Youth Basketball
- Indian Valley Little League
- Girl Scouts
- Boy Scouts
- 4H
- Local businesses
- Food Pantry
- School Resource Officers
- Lion's Club



Give Back to the Community



- Coat Drive
- Thanksgiving meals
- Pie donations
- Holiday gift donations
- Support for families in need
- No cost field trips
- Free events

Future Plans

Halloween Light
Parade

Food Drive

Mindfulness
Fair

Science Fair

Math Night

How do you Build Community in Your School?

Take a stretch break!

Take 5 minutes on your own or with your group to:

- Identify 2-3 ways you build community in your school.
- Name / describe 2-3 school or PTA events or programs that add value to your school community.

We are the best resources for one another!

Responses will be collected, formatted and emailed to participants.

Collaboration

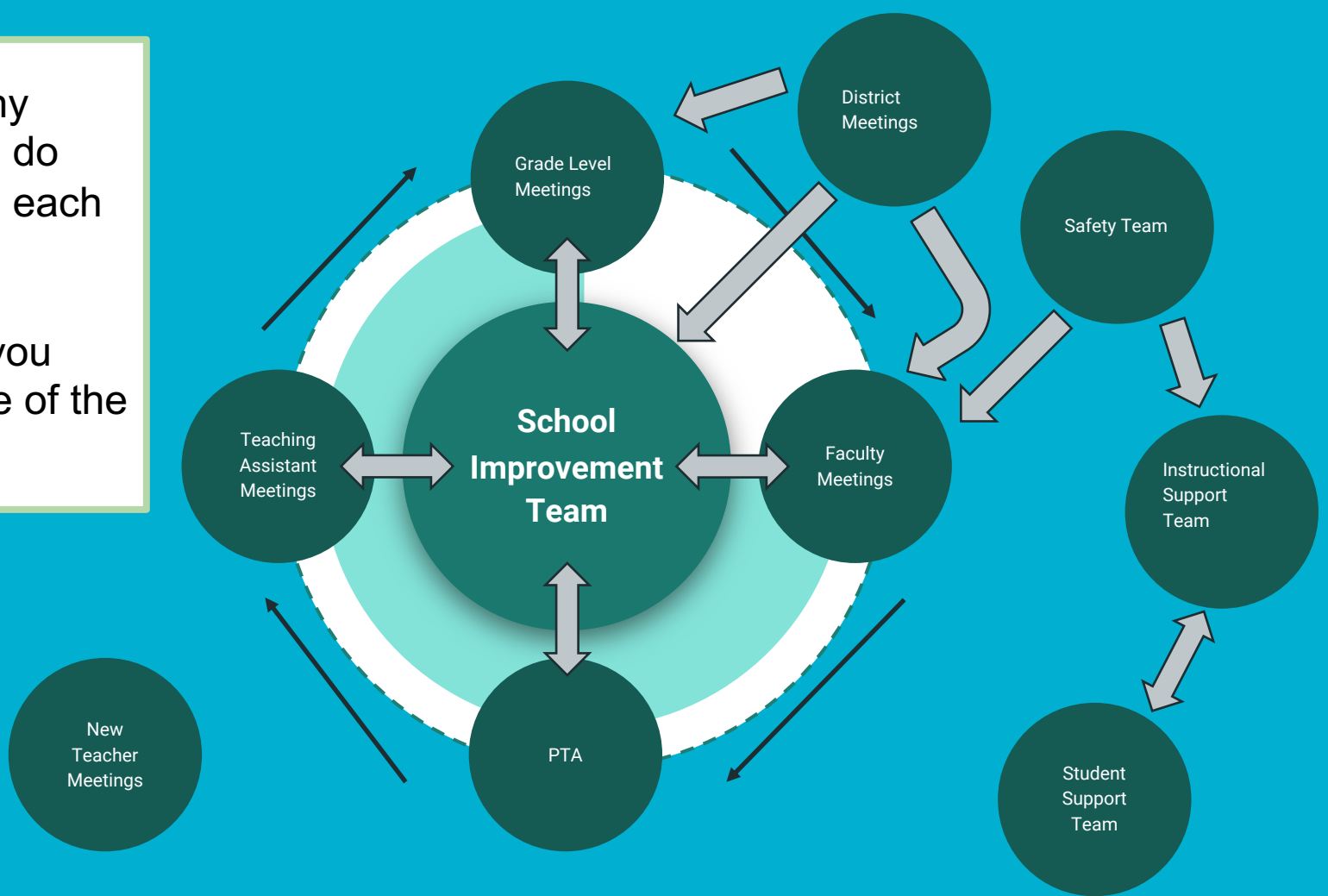


Make the best use of everyone's skills and time.

Work smarter - not harder!

How many meetings do you have each month?

How do you make use of the time?





We all have different strengths.

You never know where the best ideas will come from - the hardest part is getting everyone to work together!

Meetings with Purpose

District Level Meetings

Inform SIT, Faculty and Grade Level Meetings



School Improvement Team	Faculty Meetings	Grade Level Meetings	PTA	Teaching Assistant Meetings
<ul style="list-style-type: none">*PBIS*Climate*Data study*Event planning*Professional Development*Meeting Coordination*Meets monthly	<ul style="list-style-type: none">*Professional Development*Information sharing from other groups*Meets monthly	<ul style="list-style-type: none">*Data*Benchmarks*Instructional alignment*AIS reporting*Information sharing from other groups*Meets weekly	<ul style="list-style-type: none">*Event planning*Funding*Parent education*Meets monthly	<ul style="list-style-type: none">*Information sharing from other groups*Roles and responsibilities*Safety*Meets quarterly

Meetings with Purpose Continued

Instructional Support Team	Student Support Team	Safety Team	New Teacher Meetings
<ul style="list-style-type: none"> *Data study *Information sharing from other groups *Plans student Interventions *Refers students to SST *Meets monthly 	<ul style="list-style-type: none"> *Data study *Plans for individual social-emotional needs beyond Tier 1 *Plans student transitions *Meets every other month 	<ul style="list-style-type: none"> *Creates Safety Plan *Communicates Safety Plan to other groups *Monitors facilities needs *Monitors drill completion and reflection *Meets monthly 	<ul style="list-style-type: none"> *Agenda driven by new teachers *Addresses questions and concerns of probationary staff *Information sharing from other groups



RECORDED WITH
SCREENCAST  MATIC

What is your Meeting Structure in Your School?

Take a stretch break!

Take 5 minutes on your own or with your group to:

- Identify the meetings held in your building or district on a weekly or monthly basis to support learning.
- Describe how you structure those meetings to ensure time is well-spent

We are the best resources for one another!

Responses will be collected, formatted and emailed to participants.



Climate

PBIS

The goal of PBIS is to promote good citizenship in our students through positive rewards and recognition of students when they are demonstrating the behavior we want to see.

Our expectations:

- Be Safe
- Be Respectful
- Be Responsible



PBIS Program Evolution

- Gender tickets
- Shift away from individual tangible rewards
- Grade level celebrations
- School wide assemblies
- Gender awards
- Supreme Ganders



Supporting Student Social - Emotional Needs

- Instructional Support Team
- Student Support Team
- School Counseling Program
 - Mentoring
 - Yoga in the classroom
 - Coping strategies
 - Abilities Awareness
- Mindfulness
 - Mind-Up Curriculum
- Restorative practices
- School Social Worker



Supporting Staff

Get into classrooms every day

Protect teacher planning and meeting time

Encourage balance between home and school

Find lots of ways to say, "Thank You"



How do you Maintain a Positive Climate in Your School?

Take a stretch break!

Take 5 minutes on your own or with your group to:

- Identify 2-3 ways you facilitate a positive climate in your school.
- Describe strategies you use to support the social-emotional wellbeing of staff and students

We are the best resources for one another!

Responses will be collected, formatted and emailed to participants.

Consistency





Teaching with Poverty in Mind by Eric Jensen

- 5 years of consistent teaching
- Social-emotional health
- Movement
- Art education
- Teach strategies for developing cognitive structures necessary for learning
- Expectations

Consistency Across the District

- Preschool programming
- Math Scope and Sequence
- Engage NY
- Next Steps Guided Reading
- ELA Scope and Sequence
- Assessments
- AIS Data Points
- Mindfulness
- Counseling Supports
- Restorative practices
- Ongoing, embedded PD

On the Horizon: Next Generation Science,
Handwriting and Writing program



Instructional Consistency

- Consistent language for instruction
 - Horizontally
 - Vertically
- Setting high expectations
- Consistent social-emotional teaching
- Consistency in classroom behavior management



How do you Facilitate Consistency in Your School?

Take a stretch break!

Take 5 minutes on your own or with your group to:

- Identify 2-3 ways you facilitate instructional consistency in your school.
- Identify 2-3 ways you facilitate consistency in behavior management in your school.
- Do you have any resources to recommend to the group?

We are the best resources for one another!

Responses will be collected, formatted and emailed to participants.

Student Centered School Improvement Team

(SIT)

- Monthly PBIS Assemblies
- Friday School Spirit Days
- Lunch with your Pre-K/Kindergarten Student (September 11-14)
- Curriculum Night (September 13)
- Parent Teacher Conferences (October 18-19)
- School-wide pajama day (December 21)
- No Name Calling Week (January 22-25)
- Random Acts of Kindness (February 19-22)
- Read Across America / Dr. Seuss' Birthday (March 1)
- March Madness (March 4-7)
- Field Days (June 17-21)
- Summer Reading Challenge
- Summer Math Challenge

How do you Build Community in Your School?

Take a stretch break!

Take 5 minutes on your own or with your group to:

- Identify 2-3 ways you build community in your school.
- Name / describe 2-3 school or PTA events or programs that add value to your school community.

We are the best resources for one another!

Responses will be collected, formatted and emailed to participants.

Student Centered PTA

Plans activities and events that allow parents and families to play and learn together in cooperation with School Improvement Team and the local community

- Back to School BBQ
- Color Run / Craft Fair / Touch-a-Truck
- Trunk or Treat / Firehouse Halloween Parade
- Penny Social / Ornament Night
- Pajama Bingo / Book Fair
- Vanaver Caravan Dance Recital
- Ssip and Paint / Holiday Shoppe
- Family Literacy and Game Night
- Magic Show
- Valentine's Social
- Ssip and Paint / Book Fair
- Spring/Mother's Day Craft Fair
- Spelling Bee
- Field Trips and Field Days

Meetings with Purpose

District Level Meetings

Inform SIT, Faculty and Grade Level Meetings



School Improvement Team	Faculty Meetings	Grade Level Meetings	PTA	Teaching Assistant Meetings
<ul style="list-style-type: none">*PBIS*Climate*Data study*Event planning*Professional Development*Meeting Coordination*Meets monthly	<ul style="list-style-type: none">*Professional Development*Information sharing from other groups*Meets monthly	<ul style="list-style-type: none">*Data*Benchmarks*Instructional alignment*AIS reporting*Information sharing from other groups*Meets weekly	<ul style="list-style-type: none">*Event planning*Funding*Parent education*Meets monthly	<ul style="list-style-type: none">*Information sharing from other groups*Roles and responsibilities*Safety*Meets quarterly

How do you Maintain a Positive Climate in Your School?

Take a stretch break!

Take 5 minutes on your own or with your group to:

- Identify 2-3 ways you facilitate a positive climate in your school.
- Describe strategies you use to support the social-emotional wellbeing of staff and students

We are the best resources for one another!

Responses will be collected, formatted and emailed to participants.

Meetings with Purpose Continued

Instructional Support Team	Student Support Team	Safety Team	New Teacher Meetings
<ul style="list-style-type: none"> *Data study *Information sharing from other groups *Plans student Interventions *Refers students to SST *Meets monthly 	<ul style="list-style-type: none"> *Data study *Plans for individual social-emotional needs beyond Tier 1 *Plans student transitions *Meets every other month 	<ul style="list-style-type: none"> *Creates Safety Plan *Communicates Safety Plan to other groups *Monitors facilities needs *Monitors drill completion and reflection *Meets monthly 	<ul style="list-style-type: none"> *Agenda driven by new teachers *Addresses questions and concerns of probationary staff *Information sharing from other groups

What is your Meeting Structure in Your School?

Take a stretch break!

Take 5 minutes on your own or with your group to:

- Identify the meetings held in your building or district on a weekly or monthly basis to support learning.
- Describe how you structure those meetings to ensure time is well-spent

We are the best resources for one another!

Responses will be collected, formatted and emailed to participants.

How do you Build Community in Your School?

Take a stretch break!

Take 5 minutes on your own or with your group to:

- Identify 2-3 ways you build community in your school.
- Name / describe 2-3 school or PTA events or programs that add value to your school community.

We are the best resources for one another!

Responses will be collected, formatted and emailed to participants.

How do you Facilitate Consistency in Your School?

Take a stretch break!

Take 5 minutes on your own or with your group to:

- Identify 2-3 ways you facilitate instructional consistency in your school.
- Identify 2-3 ways you facilitate consistency in behavior management in your school.
- Do you have any resources to recommend to the group?

We are the best resources for one another!

Responses will be collected, formatted and emailed to participants.