



CATTLE CORP



## ONLINE ANGUS BULL SALE

*sale opens Thursday, March 18, 2021 • 7AM*

*sale close-out Saturday, March 20, 2021 • 7PM*

*online at [team.liveauctiongroup.com](https://team.liveauctiongroup.com)*





On behalf of Kendall, Stacey and our sons Ethan and Cameron, we would like to welcome you to KS Cattle Corp's online timed bull sale. We would like to thank our bull buyers from previous years, and thank everyone who has taken an interest in our herd.

Our goal here at KS Cattle Corp is to raise the type of bulls that we would use in our own commercial herd. We like cattle with extra volume, because that is what the cattle market is looking for. With that said, functionality is still the most important thing. Good feet, udders, docility, and longevity are the keys to a good cow herd. No bulls have been sold prior to the sale, so you have the opportunity to buy our top end genetics. Please take the time to look over this catalogue, then come for a farm visit to look over our operation.

Online bidding has become more common in cattle sales, but if it's new to you, please give me a call. I would be happy to walk you through the process.

**KENDALL AND STACEY GABOURY & SONS**  
Box 725 Spiritwood, Saskatchewan S0J 2M0  
kendallgaboury@hotmail.com

phone 306-883-7905

[www.kscattlecorp.com](http://www.kscattlecorp.com)



# KS CATTLE CORP ONLINE ANGUS BULL SALE

**Sale opens: Thursday, March 18 at 7:00 AM**

**Sale close-out: Saturday, March 20 at 7:00 PM**

online with Team Auctions... [team.liveauctiongroup.com](http://team.liveauctiongroup.com)

## terms & CONDITIONS

**TERMS:** The terms of the sale are cash or cheque, payable at par upon receipt following the sale. The right of property shall not pass until after settlement has been made. Each animal sells to the highest bidder.

**REGISTRATION:** Each animal will carry papers issued by the Canadian Angus Association. A certificate of transfer will be furnished to the buyer for each animal after payment has been made.

**HEALTH:** All animals in the sale will have met all necessary health requirements, and will have passed a semen test, and breeding soundness evaluation.

**GUARANTEE:** Each animal becomes the purchaser's risk immediately after the animal is sold. All animals in this sale will be sold under the terms and guarantees set by the Canadian Angus Association with regard to health, freedom of defects and from both reproductive and genetic unsoundness.

**INSURANCE:** We strongly recommend that insurance is purchased for full value of the bull.

**DELIVERY:** Delivery may be available, and should be discussed between the purchaser and seller



sale day phone#  
**306-883-7905**  
Kendall's cell

catalogue created by  
14 West Creations

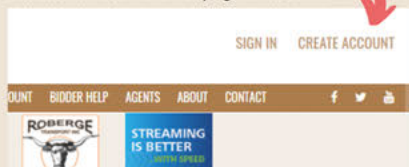


## REGISTER TO BID STEP-BY-STEP GUIDE

[team.liveauctiongroup.com](http://team.liveauctiongroup.com)

### 1 CREATE YOUR ACCOUNT

Click "Create Account" in the top right hand corner.



### 2 FILL IN YOUR INFORMATION

Fill in your First Name, Last Name, Username, Password and Email address to complete the form, then hit "create account" at the bottom of the page. Alternatively sign in using your Facebook or Google account.

First Name Last Name or Sign in with Facebook Sign in with Google

Username Password Re-Enter Password Email Re-Enter Email

☐ Yes ☐ No - Sign me up for the Weekly Newsletter  
☐ Yes ☐ No - I want to see the day before each auction has been approved to bid to  
☐ Yes ☐ No - I want to see about auction that match my past auction participation

By clicking "Create Account" I agree that:  
• I have read and accepted the [Team Auction Sales Terms & Conditions](#)  
• I will receive email with information to activate my account  
• I may receive email to respond to auction (optional) (if you opt-in only)

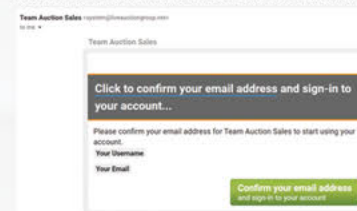
### 3 APPROVE YOUR EMAIL

Check your email for an email from "Team Auction Sales" to approve your account. Make sure to check your junk folder if you don't see it in your Inbox.

Team Auction Sales Almost done, confirm your email address for Team Auction Sales - Team Auction Sale...

### 4 CONFIRM YOUR EMAIL ADDRESS

Click on "confirm your email address" to activate your account.



### 5 GET APPROVED TO BID

Go to the auction you want to register for and click "Get approved to bid".



### 6 FILL IN YOUR BILLING INFORMATION

Fill out the billing information and click "confirm your information" at the bottom. You will then be registered for all upcoming auctions. You can edit your billing information any time by clicking on "bidder account" in the menu bar.

Email me a reminder the day ☐ Yes ☐ No before the auction starts  
☐ I accept the [User Agreement & Privacy Policy](#) and [Terms & Conditions](#)

By submitting this form, you verify that the information is valid and true.

### NEED ASSISTANCE?

PLEASE CALL OUR DEDICATED TECH SUPPORT LINE AT 1-866-313-0123 IF YOU NEED ASSISTANCE AT ANY TIME CREATING YOUR ACCOUNT OR USING OUR NEW WEBSITE.





*reference sire*  
HF SADDLE UP 217E

RS

HAMI 217E

HF SADDLE UP 217E

registration

2003039

birthdate

February 05, 2017

SIRE

HA OUTSIDE 3008

HA COWBOY UP 5405

HA BLACKCAP LADY 1602

DAM

HF TIGER 5T

HF MISS ERICA 141Z

LLB MISS ERICA 353L

KG SOLUTION 0018

HA EVER LADY 1575

SITZ UPWARD 307R

HA BLACKCAP LADY 5515

HF KODIAK 5R

HF ECHO 84R

EBON HILL VENTURE 48'2000

DOUBLE J LASS 336D

BW	EPDS	BW	WW	YW	Milk	SC	CE	MCE
91 lbs		4.3	66	126	17	1.49	3.0	5.0



KSCC SADDLE UP 104H

1

GABR 104H

KSCC SADDLE UP 104H

registration

2139165

birthdate

February 26, 2020

SIRE

HA COWBOY UP 5405

HF SADDLE UP 217E

HF MISS ERICA 141Z

DAM

LLB 44U BLACKMAN 203Y

LOCK JESSICA 32B

JOLO JESSICA 27Z

HA OUTSIDE 3008

HA BLACKCAP LADY 1602

HF TIGER 5T

LLB MISS ERICA 353L

SOO LINE BLACKMAN 8044

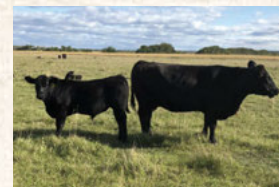
LLB MAIDEN LASS 530S

DFCC 32T FUTURE BREAKER 69W

EGGEN FAME 15M MISS 108R

BW	ADJWW	EPDS	BW	WW	YW	Milk	SC	CE	MCE
92 lbs	740 lbs		2.5	57	103	18	-	2.0	6.0

This is a bull who caught eyes all year. He is correct, smooth fronted, with added length of spine. His mother is well put together, with great feet and a tidy udder.



104H with his dam summer 2020



GABOURY LUIGI 139H

2

CGAB 139H

GABOURY LUIGI 139H

registration

2146902

birthdate

March 03, 2020

SIRE

HA COWBOY UP 5405

HF SADDLE UP 217E

HF MISS ERICA 141Z

DAM

PEAK DOT BOLD 204U

GABOURY DUCHESS 132D

CHICO DUCHESS 43Y

HA OUTSIDE 3008

HA BLACKCAP LADY 1602

HF TIGER 5T

LLB MISS ERICA 353L

MOHNEN DYNAMITE 1356

QUEEN OF PEAK DOT 652S

JUSTAMERE 158R EDDY 321U

CHICO DUCHESS 23T

BW	ADJWW	EPDS	BW	WW	YW	Milk	SC	CE	MCE
91 lbs	658 lbs		3.3	58	111	19	-	2.0	6.0

If you like them thick, this is your bull. He's wide topped, hairy and docile. That's how Saddle Up makes them.



RS

## PAINTROCK TRAPPER

IMP 1815C

registration 2065428

birthdate February 07, 2015

SIRE  
KESSLERS FRONTMAN R001  
**PAINTROCK MOUNTAIN MAN**  
ENCHANTRESS OF PR 3635

DAM  
ISAACS ALLIANCE 7161  
**EMULOUS OF PAINTROCK 93-9**  
PAINTROCK EMULOUS 446-6

CONNELLY FRONT PAGE 0228  
KESSLERS BELL 0024  
THREE TREES PRIME CUT 0145  
ENCHANTRESS OF PR 264-3  
SITZ ALLIANCE 7544  
ISAACS DIANE 55741  
3210 RIGHT TIME 802  
PAINTROCK EMULOUS 3504

BW	EPDS	BW	WW	YW	Milk	SC	CE	MCE
N/A		1.4	60	107	26	0.47	3.0	3.0



reference sire  
PAINTROCK TRAPPER

3

## GABOURY BUFF 13H

GBRY 13H

Twin

registration 2139191

birthdate February 14, 2020

SIRE  
PAINTROCK MOUNTAIN MAN  
**PAINTROCK TRAPPER**  
EMULOUS OF PAINTROCK 93-9

DAM  
B.B.A.R. LEGACY 4234  
**PCRL 67X**  
B.B.A.R. LADY MONOGRAM 2167

KESSLERS FRONTMAN R001  
ENCHANTRESS OF PR 3635  
ISAACS ALLIANCE 7161  
PAINTROCK EMULOUS 446-6  
O C C LEGACY 839L  
B.B.A.R. RUBY BELLE 1934  
JOHNSTON NUGGET 370E  
B.B.A.R. LADY MONOGRAM 167'96

BW	ADJWW	EPDS	BW	WW	YW	Milk	SC	CE	MCE
74 lbs	657 lbs		1.8	51	86	22	0.40	3.5	3.5

The Trapper calves have impressed me this year. Here is one from an 11 year old cow who doesn't age. If you're looking to keep females, keep every female you can from this fella.



GABOURY BUFF 13H

4

## KSCC TRAPPER 57H

GABR 57H

registration 2146894

birthdate February 21, 2020

SIRE  
PAINTROCK MOUNTAIN MAN  
**PAINTROCK TRAPPER**  
EMULOUS OF PAINTROCK 93-9

DAM  
FOUR BAR X RANCHER 51Z  
**GABOURY JESSABELLE 142B**  
PCRL 16X

KESSLERS FRONTMAN R001  
ENCHANTRESS OF PR 3635  
ISAACS ALLIANCE 7161  
PAINTROCK EMULOUS 446-6  
FOUR BAR X RANCHER 6W  
FOUR BAR X NINA 51W  
B.B.A.R. LEGACY 4234  
PCRL RUBY MAJORETTE 16U

BW	ADJWW	EPDS	BW	WW	YW	Milk	SC	CE	MCE
83 lbs	739 lbs		-1.0	47	82	26	0.49	9.0	7.0

Here is a Trapper calf with extra length. He will add pounds to your calves, while having enough calving ease to also work in the heifer pen.



KSCC TRAPPER 57H





KSCC CUTTING EDGE 17H

5

## KSCC CUTTING EDGE 17H

GABR 17H

registration 2147134

birthdate February 15, 2017

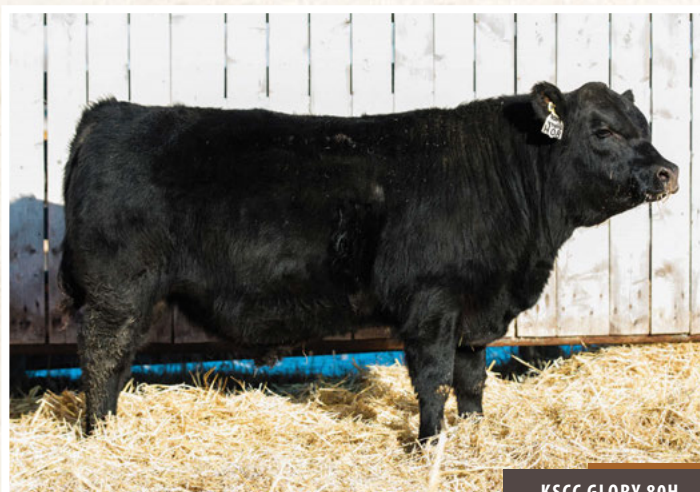
SIRE  
S A V HARVESTOR 0338  
**S A V CUTTING EDGE 4857**  
S A V BLACKCAP MAY 5530

DAM  
S A V 8180 TRAVELER 004  
**S A V EMBLYNETTE 2579**  
S A V EMBLYNETTE DIAMOND 6377

S A V HERITAGE 6295  
S A V EMBLYNETTE 7749  
B C C BUSHWACKER 41-93  
S A V MAY 7238  
SITZ TRAVELER 8180  
BOYD FOREVER LADY 8003  
PRO TREND 9042 L W  
S A V SKY DIAMOND 2582

BW	ADJWW	EPDS	BW	WW	YW	Milk	SC	CE	MCE
701 lbs	671 lbs		4.6	51	89	23	0.82	-1.0	9.5

I purchased this bull as an embryo from Mitch and Jodie Campbell. He is backed with powerhouse SAV genetics.



KSCC GLORY 80H

6

## KSCC GLORY 80H

GABR 80H

registration 2139189

birthdate February 23, 2020

SIRE  
O C C GLORY 950G  
**FRL GLORY 4E**  
FRL ATALANTA 626S

DAM  
D H D TRAVELER 6807  
**FRL CLOUDY GIRL 840F**  
H A CLOUDY GIRL 635S

O C C EXODUS 712E  
O C C DIXIE ERICA 971E  
FRL RIGHT TIME 4M  
BEAR HILLS ATALANTA 15F  
Q A S TRAVELER 23-4  
BEMINDFUL MAID D H D 0807  
R R FERDINAND 758D  
H A CLOUDY GIRL 2092

BW	ADJWW	EPDS	BW	WW	YW	Milk	SC	CE	MCE
97 lbs	705 lbs		5.1	40	77	20	-	-7.0	-2.0

This guy's mother did a wonderful job as a first calf heifer. This bull is thick and well put together.



KSCC HARVESTOR 98H

7

## KSCC HARVESTOR 98H

GABR 98H

registration 2146907

birthdate February 26, 2020

SIRE  
S A V HERITAGE 6295  
**S A V HARVESTOR 0338**  
S A V EMBLYNETTE 7749

DAM  
KG SOLUTION 0018  
**GABOURY DAISY 1E**  
KBJ BLACK LADY 367C

CAR DUKE 104  
S A V BLACKCAP MAY 4136  
S A V NET WORTH 4200  
SAV EMBLYNETTE DIAMOND 6377  
MOGCK SURE SHOT  
KG RITO LADY 8724  
JL ELIMINATOR 2061  
KBJ BLACK LADY 69S

BW	ADJWW	EPDS	BW	WW	YW	Milk	SC	CE	MCE
73 lbs	614 lbs		1.6	55	103	21	-	7.0	8.0

Here is a Harvestor son with added calving ease. His KG Solution dam raised him right.



8

## KSCC ADONIS 165H

GABR 165H

registration 2146906

birthdate March 12, 2020

YOUNG DALE XPORT 5X  
 SIRE **DFCC 176W ADONIS 25A**  
 LEELA BLACK BEAUTY 8T

MAR INNOVATION 251  
 DAM **MERIT BLACKCLASS 6037D**  
 MERIT BLACKCLASS 9592

YOUNG DALE PANARAMA 66T  
 YOUNG DALE GRACE 1R  
 H A IMAGE MAKER 0415  
 KBJ BLACK BEAUTY 586N  
 CONNEALY IMPRESSION  
 MAR FINAL KAHUNA 856  
 ROYAL FORTE DRCC 5138R  
 MERIT BLACKCLASS 3132

BW	ADJWW	EPDS	BW	WW	YW	Milk	SC	CE	MCE
101 lbs	706 lbs		3.2	50	94	24	-	0.0	7.0

He is built like his pappa. Extra frame without giving up thickness. If you need a power bull, look his way.



KSCC ADONIS 165H

9

## KSCC SADDLE UP 172H

GABR 172H

registration 2142105

birthdate March 15, 2020

HA COWBOY UP 5405  
 SIRE **HF SADDLE UP 217E**  
 HF MISS ERICA 141Z

MERIT BIG DAWG 3049A  
 DAM **MERIT BEAUTY 6076D**  
 MERIT BEAUTY 3110

HA OUTSIDE 3008  
 HA BLACKCAP LADY 1602  
 HF TIGER 5T  
 LLB MISS ERICA 353L  
 BAR-E-L IRON WILL 32Y  
 MERIT PRIDE 8651  
 MERIT 77X  
 MERIT BEAUTY 9563

BW	ADJWW	EPDS	BW	WW	YW	Milk	SC	CE	MCE
85 lbs	642 lbs		2.4	50	97	19	1.48	6.0	10.0

If you want to sleep through the night, this guy has heifer bull written all over him. Low birth weight, and has the thickness to grow your calves.



KSCC SADDLE UP 172H

10

## KSCC SADDLE UP 21H

GABR 21H

registration 2139166

birthdate February 15, 2020

HA COWBOY UP 5405  
 SIRE **HF SADDLE UP 217E**  
 HF MISS ERICA 141Z

DURALTA 4T TURBO 71X  
 DAM **DFCC 71X BLISS 55B**  
 MJT ERICA 528T

HA OUTSIDE 3008  
 HA BLACKCAP LADY 1602  
 HF TIGER 5T  
 LLB MISS ERICA 353L  
 DBRL 03M TITAN 4T  
 SCC 5320 TIBBIE 26M  
 20/20 SHOW OFF 29R  
 MJT ERICA 1J

BW	ADJWW	EPDS	BW	WW	YW	Milk	SC	CE	MCE
97 lbs	611 lbs		4.8	49	98	20	-	0.0	4.0

A long bodied bull who is smooth fronted and docile.



KSCC SADDLE UP 21H





Online Angus Bull Sale - [team.liveauctiongroup.com](http://team.liveauctiongroup.com)  
*Spiritwood, Saskatchewan*