

Name: \_\_\_\_\_

# Adopt a Cowboy

# Cowboy Math

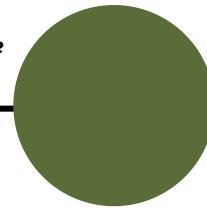
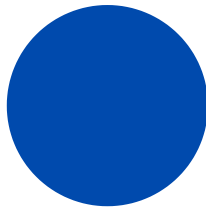


Angus cattle are known for their black color, medium size, and excellent meat quality.



Brahman cattle are known for their heat tolerance, disease resistance, and hardiness.

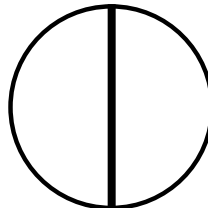
Cross-breeding is used to combine the best qualities of different breeds. The offspring gets 1/2 the traits of each parent.



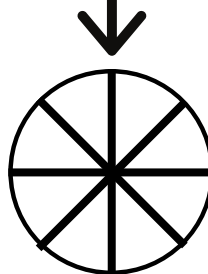
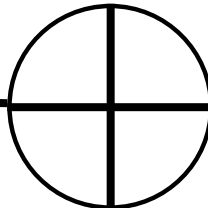
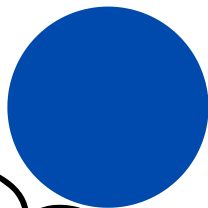
Angus cattle are one of the *Bos Taurus* breeds. These breeds originated in the cooler climates of Europe.

Brahman cattle are one of the *Bos Indicus* breeds. These breeds originated in the warmer climates of India.

Fill in the circles with the colors to show the fraction at each step of cross-breeding.



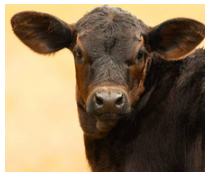
F1 is the term used for the 1st cross in cross-breeding



Brangus cattle combine the best qualities of the \_\_\_\_\_ and \_\_\_\_\_ breeds. Brangus are traditionally  $\frac{3}{8}$  Angus and  $\frac{5}{8}$  Brahman (Use the fraction to the left to solve).

Just for Fun!

What 2 animals would you combine? You can draw a picture here.



Name: \_\_\_\_\_

# Adopt a Cowboy

# Cowboy Math



Angus cattle are known for their black color, medium size, and excellent meat quality.



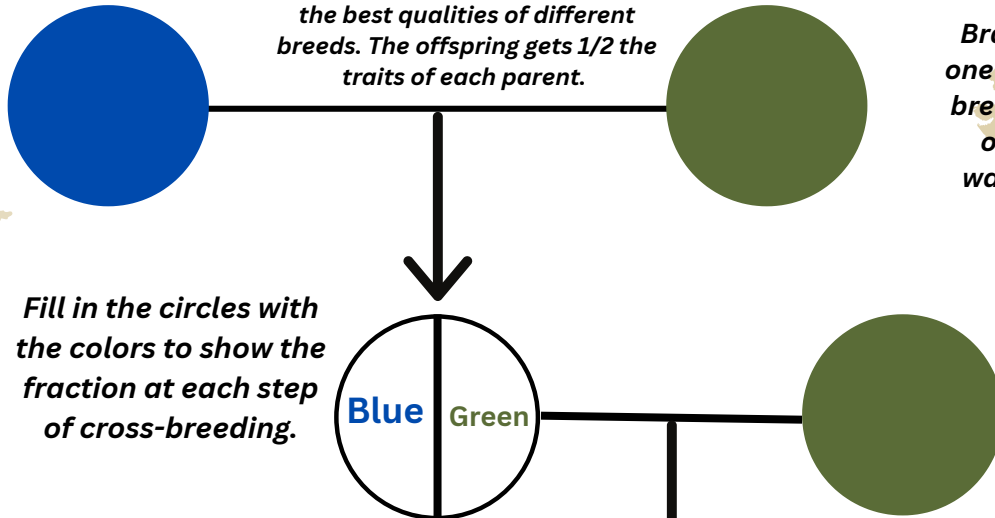
Brahman cattle are known for their heat tolerance, disease resistance, and hardiness.

Cross-breeding is used to combine the best qualities of different breeds. The offspring gets 1/2 the traits of each parent.

Brahman cattle are one of the *Bos Indicus* breeds. These breeds originated in the warmer climates of India.

Angus cattle are one of the *Bos Taurus* breeds. These breeds originated in the cooler climates of Europe.

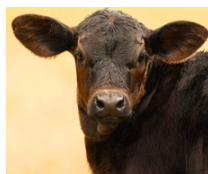
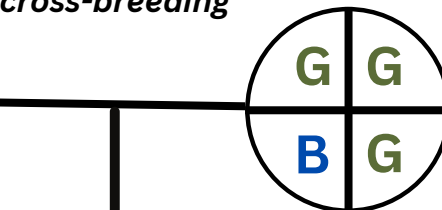
Fill in the circles with the colors to show the fraction at each step of cross-breeding.



F1 is the term used for the 1st cross in cross-breeding

*Just for Fun!*

What 2 animals would you combine?  
You can draw a picture here.



Brangus cattle combine the best qualities of the          Angus and          Brahman breeds. Brangus are traditionally  $\frac{5}{8}$  Angus and  $\frac{3}{8}$  Brahman (Use the fraction to the left to solve).