



**VS AMERICA  
QUICKSHIP PROGRAM**

**ALL INVENTORY SHIPS FROM THE U.S. IN 10 BUSINESS  
DAYS OR LESS.**

## VS AMERICA

VS America, Inc. provides adaptable and ergonomic educational furniture solutions for the creation of agile learning environments.

At VS, we believe successful learning should balance the needs of the body, mind, and soul. We always encourage movement and natural curiosity. From our fully-adjustable chairs to modular tables that encourage collaboration, we believe that learning is an active process. When students engage their senses while learning, the long-term benefits include a heightened focus, stronger motivation, and a sense of well-being.

Our ergonomic furniture inspires motion, and has the flexibility to adapt to every changing classroom need – giving educators the freedom to easily create spaces for every type of learning style.

For more information, please visit [www.vsamerica.com/agilespace](http://www.vsamerica.com/agilespace).

## **QUICKSHIP PROGRAM**

When a project requires a short turnaround time, the QuickShip Program will help get products to you faster – in-stock products will ship in 10 business days or less.

The specific products showcased in this brochure are all included in the QuickShip Program. QuickShip is based on a first-come, first-served basis, and items may not be reserved for longer than 10 business days. Please confirm available quantities before placing an order.

For VS America's freight policy, please contact your Territory Manager or email [info@vsamerica.com](mailto:info@vsamerica.com).

## **GETTING PRODUCTS TO CUSTOMERS FASTER**



## CONTENTS

---

<b>INSPIRATION</b>	Classroom Renderings .....	6
<b>SEATING</b>	JUMPER Air Active .....	14
	PantoSwing-LuPo.....	18
	PantoMove-LuPo .....	22
	Compass-LuPo.....	26
	Hokki .....	30
	Hokki+.....	34
	VS Stakki.....	38
	Solo .....	42
	LuPoStool .....	46
	Shift+ Landscape .....	50
<b>TABLES</b>	Shift+ ThumbPrint .....	54
	LiteTable-ST.....	58
	FlipTable-RU .....	62
	Shift+ FusionFlip .....	66
	RondoLift-KF.....	70
	Shift+ Interact .....	74
<b>STORAGE</b>	Shift+ Transfer .....	78
	Shift+ Transfer Box .....	82
<b>CLASSROOMS</b>	Agile Spaces .....	86
	Sample Classroom Layouts .....	87



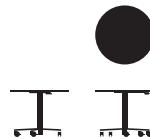
21090  
LiteTable-ST



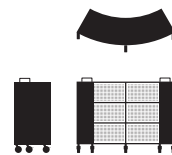
33400  
JUMPER Air Active



22111  
FlipTable-RU



02824  
RondoLift-KF




45292/45293  
Shift+ Transfer Curve



09329  
Shift+ Landscape






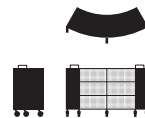
**31315**  
Compass-LuPo



**03825**  
Hokki









**31400**  
PantoSwing-LuPo



**45292/45293**  
Shift+ Transfer Curve



**09329**  
Shift+ Landscape

  
  
  
**03826**  
Solo  
  
  
**21090**  
LiteTable-ST  
  
  
**31512**  
PantoMove-Plus  
  
  
**01444**  
Shift+ Interact

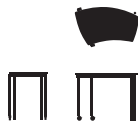




**31506**  
PantoMove-LuPo



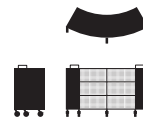
**33400**  
JUMPER Air Active



**01440/01441**  
Shift+ ThumbPrint



**01451**  
Shift+ FusionFlip



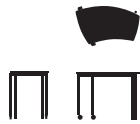
**45292/45293**  
Shift+ Transfer Curve



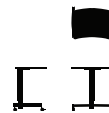
**31506**  
PantoMove-LuPo



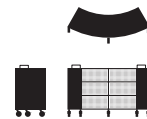
**33400**  
JUMPER Air Active



**01440/01441**  
Shift+ ThumbPrint



**01444**  
Shift+ Interact



**45292/45293**  
Shift+ Transfer Curve





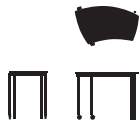
31506

PantoMove-LuPo



33400

JUMPER Air Active



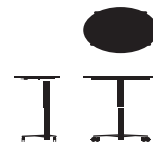
01440/01441

Shift+ ThumbPrint



03825

Hokki



02828

RondoLift-KF



01451

Shift+ FusionFlip





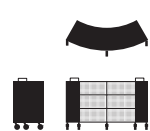

**33400**  
JUMPER Air Active



**01440/01441**  
Shift+ ThumbPrint



**03825**  
Hokki



**45292/45293**  
Shift+ Transfer Curve



**09329**  
Shift+ Landscape

# JUMPER AIR ACTIVE

## Forward-flexing cantilever chair

Adaptable and durable, the JUMPER® chair is also active, lively, and versatile. The seat shell is made of a double wall of polypropylene that creates an air-cushion effect for a comfortable sitting posture. The JUMPER is also equipped with an easy-carry grip hole and stacks up to 5 high.



## THE MODELS



MODEL: 33400

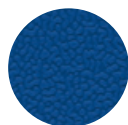
---

## SEAT HEIGHTS

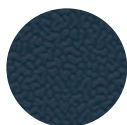
● Yellow Dot - 13 <sup>7</sup>/<sub>8</sub>"   ● Red Dot - 15"   ● Green Dot - 17"   ● Blue Dot - 18 <sup>1</sup>/<sub>8</sub>"

---

## SEAT SHELL COLORS



Dark Blue  
(029)



Black Grey  
(073)

## METAL FINISHES



Arctic  
(059)

## GLIDES



2-Component





Also pictured  
FlipTable-RU. Page 62

## JUMPER AIR ACTIVE DETAILS

MODEL	ITEM CODE	HEIGHT	FRAME	SHELL SIZE	SEAT SHELL COLOR	GLIDES
33400	031	● Yellow Dot - 13 7/8"	Arctic (059)	S	Black Grey (073)	2-Component
33400	082	● Yellow Dot - 13 7/8"	Arctic (059)	S	Dark Blue (029)	2-Component
33400	032	● Red Dot - 15"	Arctic (059)	M	Black Grey (073)	2-Component
33400	083	● Red Dot - 15"	Arctic (059)	M	Dark Blue (029)	2-Component
33400	033	● Green Dot - 17"	Arctic (059)	M	Black Grey (073)	2-Component
33400	084	● Green Dot - 17"	Arctic (059)	M	Dark Blue (029)	2-Component
33400	034	● Blue Dot - 18 1/8"	Arctic (059)	L	Black Grey (073)	2-Component
33400	085	● Blue Dot - 18 1/8"	Arctic (059)	L	Dark Blue (029)	2-Component

# PANTOSWING-LUPO

## Forward-flexing cantilever chair

The PantoSwing's dynamic seat encourages regular changes in sitting positions, which has been shown to activate both the body and mind, and to increase the attention of students. With a frame made of bent, powder-coated steel tubing and a seat shell made of double-walled textured polypropylene, this chair takes durability to a new level.



## THE MODELS



MODEL: 31400

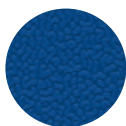
---

## SEAT HEIGHTS

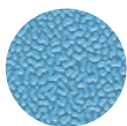
 Yellow Dot - 13 7/8"     Red Dot - 15"     Green Dot - 17"     Blue Dot - 18 1/8"

---

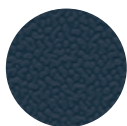
## SEAT SHELL COLORS



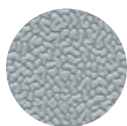
Dark Blue  
(029)



Light Blue  
(030)



Black Grey  
(073)



Dolphin Grey  
(078)



Arctic  
(059)

## METAL FINISHES

## GLIDES



2-Component



Plastic





Also pictured  
LiteTable-ST: Page 58



## PANTOSWING-LUPO DETAILS

MODEL	ITEM CODE	HEIGHT	FRAME	SHELL SIZE	SEAT SHELL COLOR	GLIDES
31400	140	● Yellow Dot - 13 7/8"	Arctic (059)	S	Black Grey (073)	2-Component
31400	145	● Yellow Dot - 13 7/8"	Arctic (059)	S	Dark Blue (029)	2-Component
31400	162	● Yellow Dot - 13 7/8"	Arctic (059)	S	Dolphin Grey (078)	2-Component
31400	216	● Yellow Dot - 13 7/8"	Arctic (059)	S	Light Blue (030)	2-Component
31400	351	● Yellow Dot - 13 7/8"	Arctic (059)	S	Black Grey (073)	Plastic
31400	141	● Red Dot - 15"	Arctic (059)	M	Black Grey (073)	2-Component
31400	146	● Red Dot - 15"	Arctic (059)	M	Dark Blue (029)	2-Component
31400	161	● Red Dot - 15"	Arctic (059)	M	Dolphin Grey (078)	2-Component
31400	214	● Red Dot - 15"	Arctic (059)	M	Light Blue (030)	2-Component
31400	381	● Red Dot - 15"	Arctic (059)	M	Black Grey (073)	Plastic
31400	142	● Green Dot - 17"	Arctic (059)	M	Black Grey (073)	2-Component
31400	147	● Green Dot - 17"	Arctic (059)	M	Dark Blue (029)	2-Component
31400	196	● Green Dot - 17"	Arctic (059)	M	Dolphin Grey (078)	2-Component
31400	300	● Green Dot - 17"	Arctic (059)	M	Light Blue (030)	2-Component
31400	431	● Green Dot - 17"	Arctic (059)	M	Black Grey (073)	Plastic
31400	117	● Blue Dot - 18 1/8"	Arctic (059)	L	Black Grey (073)	2-Component
31400	120	● Blue Dot - 18 1/8"	Arctic (059)	L	Dark Blue (029)	2-Component
31400	234	● Blue Dot - 18 1/8"	Arctic (059)	L	Dolphin Grey (078)	2-Component
31400	201	● Blue Dot - 18 1/8"	Arctic (059)	L	Light Blue (030)	2-Component
31400	223	● Blue Dot - 18 1/8"	Arctic (059)	L	Dark Blue (029)	Plastic
31400	199	● Blue Dot - 18 1/8"	Arctic (059)	L	Black Grey (073)	Plastic

# PANTOMOVE-LUPO

## **Ergonomic, height-adjustable chair**

The PantoMove chair is height-adjustable, making it easy to quickly adjust the seat to individual requirements. The patented 3D rocking mechanism offers even greater dynamic sitting by allowing the seat area to react to every change of weight and leans gently forward, backward, or sideways.

The PantoMove is a great mobile solution for any agile space.



## THE MODELS



MODEL: 31506



MODEL: 31507



MODEL: 31512

---

## SEAT HEIGHTS

Adjustable from  
16 1/2" - 21 1/2" (31506)

Adjustable from  
19 3/4" - 29 1/2" (31507)

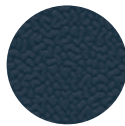
Adjustable from  
21 7/8" - 31 5/8" (31512)

---

## SEAT SHELL COLORS



Dark Blue  
(029)



Black Grey  
(073)

## METAL FINISHES



Arctic  
(059)

## CASTORS



Soft Castors



Hard Castors  
(31506)



**Also pictured**

Shift+ ThumbPrint: Page 54

Shift+ Interact: Page 74

Shift+ Transfer Teach: Page 78

Shift+ Transfer Box: Page 82

### PANTOMOVE-LUPO DETAILS

MODEL	ITEM CODE	SEAT HEIGHT	FRAME	SHELL SIZE	SEAT SHELL COLOR	3D ROCKING	CASTORS
31506	081	Adjustable from 16 1/2" - 21 1/2"	Arctic (059)	L	Dark Blue (029)	Yes	Hard
31506	082	Adjustable from 16 1/2" - 21 1/2"	Arctic (059)	L	Dark Blue (029)	Yes	Soft
31506	083	Adjustable from 16 1/2" - 21 1/2"	Arctic (059)	L	Black Grey (073)	Yes	Hard
31506	084	Adjustable from 16 1/2" - 21 1/2"	Arctic (059)	L	Black Grey (073)	Yes	Soft
31507	012	Adjustable from 19 3/4" - 29 1/2" with footring	Arctic (059)	L	Dark Blue (029)	Yes	Soft
31507	001	Adjustable from 19 3/4" - 29 1/2" with footring	Arctic (059)	L	Black Grey (073)	Yes	Soft
31512	013	Adjustable from 21 7/8" - 31 5/8" with footring	Arctic (059)	XL	Black Grey (073)	No	Soft
31512	068	Adjustable from 21 7/8" - 31 5/8" with footring	Arctic (059)	XL	Dark Blue (029)	No	Soft

# COMPASS-LUPO

## Four-legged chair

The Compass-LuPo chair on soft castors or 2-component glides makes mobility easy and is perfect for hard floors. The frame is made of bent and welded powder-coated round steel tubing, and the seat shell is made of double-walled polypropylene for comfortable sitting with an air-cushion effect.



## THE MODELS



MODEL: 31300



MODEL: 31315

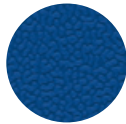
---

## SEAT HEIGHTS

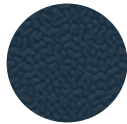
 Blue Dot - 18 1/8"

---

## SEAT SHELL COLORS



Dark Blue  
(029)



Black Grey  
(073)

## METAL FINISHES



Arctic  
(059)

## CASTORS



Soft Castors

## GLIDES



2-Component Glides





**Also pictured**  
Hokki: Page 30  
Shift+ Landscape: Page 50  
Shift+ Transfer Teach: Page 78



## COMPASS-LUPO DETAILS

MODEL	ITEM CODE	HEIGHT	FRAME	SHELL SIZE	SEAT SHELL COLOR	CASTORS/ GLIDES
31300	097	● Blue Dot - 18 1/8"	Arctic (059)	L	Black Grey (073)	2-Component
31300	098	● Blue Dot - 18 1/8"	Arctic (059)	L	Dark Blue (029)	2-Component
31315	074	● Blue Dot - 18 1/8"	Arctic (059)	XL	Black Grey (073)	Soft
31315	002	● Blue Dot - 18 1/8"	Arctic (059)	XL	Dark Blue (029)	Soft

# HOKKI

## Iconic wobble stool

The Hokki stool is a true original, with an iconic wobble that creates added motion and balance, making it easy for children and adults of all ages to be more engaged and focused. The floor safe slip-resistant rubber base features a convex shape, allowing for a natural, 360-degree range of motion.



## THE MODELS



MODEL: 3825

## SEAT HEIGHTS

- Violet Dot - 12 1/4"   
 ● Red Dot - 15"   
 ● Blue Dot - 18 1/8"   
 ● Brown Dot - 20 1/8"

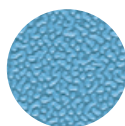
## COLORS



Dark Red  
(027)



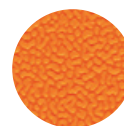
Dark Blue  
(029)



Light Blue  
(030)



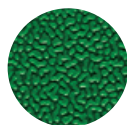
White  
(031)



Orange  
(032)



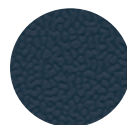
Light Green  
(033)



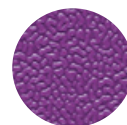
Green  
(034)



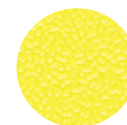
Traffic Red  
(037)



Black Grey  
(073)



Purple  
(036)



Yellow  
(999)



Also pictured  
Compass-LuPo: Page 26  
FlipTable-RU: Page 62  
Shift+ Landscape: Page 50

## HOKKI DETAILS

MODEL	HEIGHT
3825	● Violet Dot - 12 1/4"
3825	● Red Dot - 15"
3825	● Blue Dot - 18 1/8"
3825	● Brown Dot - 20 1/8"

# HOKKI+

## Height-adjustable wobble stool

The Hokki+® is the height-adjustable Hokki, available with a height adjustment range of 15" to 19<sup>3</sup>/<sub>4</sub>" or 19<sup>3</sup>/<sub>4</sub>" to 26<sup>3</sup>/<sub>4</sub>". The Hokki+ has a gas spring height adjustment with anti-twist protector, resulting in overall stability and seating comfort. The adjustment mechanism is immediately accessible and can be triggered from any position with one hand.



### THE MODELS



MODEL: 3813



MODEL: 3814

---

### SEAT HEIGHTS

Adjustable from 15" - 19 <sup>3</sup>/<sub>4</sub>" (3813)

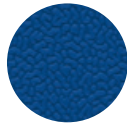
Adjustable from 19 <sup>3</sup>/<sub>4</sub>" - 26 <sup>3</sup>/<sub>4</sub>" (3814)

---

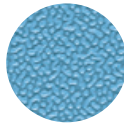
### COLORS



Dark Red  
(027)



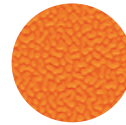
Dark Blue  
(029)



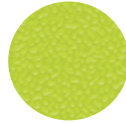
Light Blue  
(030)



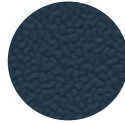
White  
(031)



Orange  
(032)



Light Green  
(033)



Black Grey  
(073)





**Also pictured**

PantoMove-LuPo: Page 22

Shift+ Landscape: Page 50

Shift+ FusionFlip: Page 66

RondoLift-KF: Page 70

Shift+ Transfer Curve: Page 78



**HOKKI+ DETAILS**

MODEL	HEIGHT
3813	Adjustable from 15" - 19 <sup>3</sup> / <sub>4</sub> "
3814	Adjustable from 19 <sup>3</sup> / <sub>4</sub> " - 26 <sup>3</sup> / <sub>4</sub> "

# VS STAKKI

## **Three-legged indoor/outdoor chair**

The VS Stakki is lightweight, easy to clean, stackable up to 10, and practical for indoor and outdoor use in educational environments, cafeterias, and more. Manufactured from durable glass-fiber reinforced polypropylene, the VS Stakki is made from a single part and any production surpluses are directly reused for the manufacturing of new chairs.



## THE MODELS



MODEL: 3811

---

## SEAT HEIGHTS

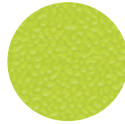
 Blue Dot - 18 1/8"

---

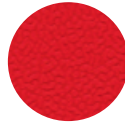
## COLORS



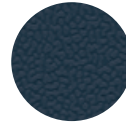
Dark Blue  
(029)



Light Green  
(033)



Traffic Red  
(037)



Black Grey  
(073)

## GLIDES



2-Component Glides





**VS STAKKI DETAILS**

MODEL	ITEM CODE	HEIGHT	GLIDES	COLOR
3811	029	● Blue Dot - 18 1/8"	2-Component	Dark Blue (029)
3811	033	● Blue Dot - 18 1/8"	2-Component	Light Green (033)
3811	037	● Blue Dot - 18 1/8"	2-Component	Traffic Red (037)
3811	073	● Blue Dot - 18 1/8"	2-Component	Black Grey (073)

# SOLO

## Four-legged stool

The Solo stool is available in four fixed sitting heights of 18<sup>1</sup>/<sub>8</sub>", 20<sup>1</sup>/<sub>2</sub>", 24", and 30" through QuickShip and has 4 foot rings positioned at different heights for use as footrests. These foot rings make the Solo stool easy to be used by students of all heights. This stool can be stacked up to 4 at a time.



## THE MODELS



MODELS: 3826, 3826-S

---

## SEAT HEIGHTS

● Blue Dot - 18 1/8"

● Brown Dot - 20 1/2"

● 24"

● 30"

---

## SEAT COLORS



Natural  
Beech (010)

## METAL FINISHES



Arctic  
(059)

## GLIDES



Plastic



Also pictured  
RondoLift-KF: Page 70



## SOLO STOOL DETAILS

MODEL	ITEM CODE		HEIGHT	FRAME	SEAT COLOR	GLIDES
3826	1119	●	Blue Dot - 18 1/8"	Arctic (059)	Natural Beech (010)	Plastic
3826	051	●	Brown Dot - 20 1/2"	Arctic (059)	Natural Beech (010)	Plastic
3826	1114	●	24"	Arctic (059)	Natural Beech (010)	Plastic
3826-S	076	●	30"	Arctic (059)	Natural Beech (010)	Plastic

# LUPOSTOOL

## Skid stool

The LuPoStool has a welded steel tube frame with a U-shaped skid. The seat shell is made of double-walled polypropylene for comfortable sitting with an air-cushion effect. The stool can be stored on tabletops and is also stackable. The taller two heights come with a footrest.



### THE MODELS



MODEL: 3428



MODEL: 3429

---

### SEAT HEIGHTS

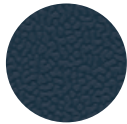
 Blue Dot - 18 1/8"

 22 1/8"

 24"

---

### SEAT COLORS



Black Grey  
(073)

### METAL FINISHES



Arctic  
(059)

### GLIDES



2-Component



Also pictured  
RondoLift-KF: Page 70



## LUPOSTOOL DETAILS

MODEL	ITEM CODE	HEIGHT	BACKREST	FOOTREST	FRAME	SEAT COLOR	GLIDES
3428	059	● Blue Dot - 18 1/8"	Yes	No	Arctic (059)	Black Grey (073)	2-Component
3428	073	● 22 1/8"	Yes	Yes	Arctic (059)	Black Grey (073)	2-Component
3428	015	● 24"	Yes	Yes	Arctic (059)	Black Grey (073)	2-Component
3429	046	● Blue Dot - 18 1/8"	No	No	Arctic (059)	Black Grey (073)	2-Component
3429	056	● 22 1/8"	No	Yes	Arctic (059)	Black Grey (073)	2-Component
3429	014	● 24"	No	Yes	Arctic (059)	Black Grey (073)	2-Component

# SHIFT+ LANDSCAPE

## Soft seating elements

With the Shift+ Landscape seating elements, learning environments and differentiated zones within the classroom can be simply and quickly formed. Both the straight and the 60° curved seating elements are available for QuickShip in two different heights. The Stamskin upholstery is extremely durable and easy to clean.



### THE MODELS



MODEL: 9328



MODEL: 9329

---

### SEAT HEIGHTS

 Red Dot - 15"

 Blue Dot - 18 1/8"

---

### FABRIC COLORS



S864 Dark Blue



S987 Green



S989 Grey

### GLIDES



2-Component



Also pictured  
RondoLift-KF: Page 70  
Shift+ Transfer Curve: Page 78



**SHIFT+ LANDSCAPE DETAILS**

MODEL	ITEM CODE		HEIGHT	FABRIC COLOR	GLIDES	SHAPE
9328	022	●	Red Dot - 15"	S864 Dark Blue	2-Component	Straight
9328	031	●	Red Dot - 15"	S987 Green	2-Component	Straight
9328	002	●	Blue Dot - 18 1/8"	S864 Dark Blue	2-Component	Straight
9328	041	●	Blue Dot - 18 1/8"	S987 Green	2-Component	Straight
9329	011	●	Red Dot - 15"	S864 Dark Blue	2-Component	60°
9329	079	●	Red Dot - 15"	S987 Green	2-Component	60°
9329	287	●	Red Dot - 15"	S989 Grey	2-Component	60°
9329	001	●	Blue Dot - 18 1/8"	S864 Dark Blue	2-Component	60°
9329	080	●	Blue Dot - 18 1/8"	S987 Green	2-Component	60°
9329	1064	●	Blue Dot - 18 1/8"	S989 Grey	2-Component	60°

# SHIFT+ THUMBPRINT

## Mobile, Stackable Desk

The ThumbPrint is an easy to move, lightweight desk with flexible use positions. The convex- or concave-shaped tabletops ensure the tables can be combined in a variety of ways - into circles, rows, groups, and more. ThumbPrint tables increase classroom combination possibilities and open up configurations for a truly agile design.



## THE MODELS



MODEL: 1440 (Convex)



MODEL: 1441 (Concave)

DIMENSIONS: 38" x 21 1/4"

---

## TABLE HEIGHTS

● Yellow Dot - 23 1/4"

● Red Dot - 25 1/4"

● Green Dot - 28"

● Blue Dot - 30"

Height-adjustable in steps 23 1/4" - 32 3/8"

---

## TABLETOP FINISHES



Maple  
LIGNOpal  
(028)



Andes  
Grey  
(035)

## METAL FINISHES



Arctic  
(059)

## GLIDES & CASTORS



Two 2-Component  
Glides

+



Two Castors



Also pictured  
JUMPER Air Active: Page 14

## THUMBPRINT DETAILS

MODEL	ITEM CODE	HEIGHT	FRAME	TABLETOP FINISH	CASTORS/GLIDES
1440	111	● Yellow Dot - 23 1/4"	Arctic (059)	Maple LIGNOpal (028)	2 Castors, 2 2-Component Glides
1440	1035	● Yellow Dot - 23 1/4"	Arctic (059)	Andes Grey (035)	2 Castors, 2 2-Component Glides
1440	105	● Red Dot - 25 1/4"	Arctic (059)	Maple LIGNOpal (028)	2 Castors, 2 2-Component Glides
1440	1051	● Red Dot - 25 1/4"	Arctic (059)	Andes Grey (035)	2 Castors, 2 2-Component Glides
1440	106	● Green Dot - 28"	Arctic (059)	Maple LIGNOpal (028)	2 Castors, 2 2-Component Glides
1440	101	● Blue Dot - 30"	Arctic (059)	Maple LIGNOpal (028)	2 Castors, 2 2-Component Glides
1440	1002	● Blue Dot - 30"	Arctic (059)	Andes Grey (035)	2 Castors, 2 2-Component Glides
1440	1013	Height-adjustable in steps 23 1/4" - 32 3/8"	Arctic (059)	Andes Grey (035)	2 Castors, 2 2-Component Glides
1440	1024	Height-adjustable in steps 23 1/4" - 32 3/8"	Arctic (059)	Maple LIGNOpal (028)	2 Castors, 2 2-Component Glides
1441	111	● Yellow Dot - 23 1/4"	Arctic (059)	Maple LIGNOpal (028)	2 Castors, 2 2-Component Glides
1441	1035	● Yellow Dot - 23 1/4"	Arctic (059)	Andes Grey (035)	2 Castors, 2 2-Component Glides
1441	105	● Red Dot - 25 1/4"	Arctic (059)	Maple LIGNOpal (028)	2 Castors, 2 2-Component Glides
1441	1051	● Red Dot - 25 1/4"	Arctic (059)	Andes Grey (035)	2 Castors, 2 2-Component Glides
1441	106	● Green Dot - 28"	Arctic (059)	Maple LIGNOpal (028)	2 Castors, 2 2-Component Glides
1441	101	● Blue Dot - 30"	Arctic (059)	Maple LIGNOpal (028)	2 Castors, 2 2-Component Glides
1441	1002	● Blue Dot - 30"	Arctic (059)	Andes Grey (035)	2 Castors, 2 2-Component Glides
1441	1013	Height-adjustable in steps 23 1/4" - 32 3/8"	Arctic (059)	Andes Grey (035)	2 Castors, 2 2-Component Glides
1441	1024	Height-adjustable in steps 23 1/4" - 32 3/8"	Arctic (059)	Maple LIGNOpal (028)	2 Castors, 2 2-Component Glides



# LITETABLE-ST

## Stackable lightweight table

The LiteTable-ST offers the ultimate flexibility for multi-use spaces and agile classrooms. It has a frame made from welded steel, providing superior strength and longevity. Four heights are available through the QuickShip Program so each student can find their perfect fit. This table is stackable up to 8 high and due to its paired inset and outset legs, can be alternated to allow for continuous rows without gaps between desks.



## THE MODELS



MODEL: 21090  
DIMENSIONS: 27 5/8" x 21 5/8"

---

## TABLE HEIGHTS

● Yellow Dot - 23 1/4"    ● Red Dot - 25 1/4"    ● Green Dot - 28"    ● Blue Dot - 30"

---

## TABLETOP FINISHES



Maple  
LIGNOpal  
(028)



Andes  
Grey  
(035)

## METAL FINISHES



Arctic  
(059)

## GLIDES & CASTORS



+



Two 2-Component  
Glides

Two Castors



Also pictured  
JUMPER Air Active: Page 14

## LITETABLE-ST DETAILS

MODEL	ITEM CODE	HEIGHT	FRAME	TABLETOP FINISH	CASTORS/GLIDES
21090	041	● Yellow Dot - 23 1/4"	Arctic (059)	Maple LIGNOpal (028)	2 Castors, 2 2-Component Glides
21090	1076	● Yellow Dot - 23 1/4"	Arctic (059)	Andes Grey (035)	2 Castors, 2 2-Component Glides
21090	054	● Red Dot - 25 1/4"	Arctic (059)	Maple LIGNOpal (028)	2 Castors, 2 2-Component Glides
21090	1105	● Red Dot - 25 1/4"	Arctic (059)	Andes Grey (035)	2 Castors, 2 2-Component Glides
21090	081	● Green Dot - 28"	Arctic (059)	Maple LIGNOpal (028)	2 Castors, 2 2-Component Glides
21090	1104	● Green Dot - 28"	Arctic (059)	Andes Grey (035)	2 Castors, 2 2-Component Glides
21090	011	● Blue Dot - 30"	Arctic (059)	Maple LIGNOpal (028)	2 Castors, 2 2-Component Glides
21090	1005	● Blue Dot - 30"	Arctic (059)	Andes Grey (035)	2 Castors, 2 2-Component Glides

# FLIPTABLE-RU

## Table with folding top

Roll it around. Link them together. Flip it down. Nest it away. The FlipTable-RU has exceptional flexibility, functionality, and durability for classrooms to meeting rooms and everything in between. A two-lever safety mechanism ensures the table is never flipped by accident, and the top locks when horizontal or flipped for added safety.





## THE MODELS



MODEL: 22103  
DIMENSIONS: 59 1/8" x 25 5/8"



MODEL: 22111  
DIMENSIONS: 63" x 31 1/2"

---

## TABLE HEIGHTS

 Blue Dot - 30"

Height-adjustable in steps 29 1/8" - 38 1/8"  
Height-adjustable in steps 25 1/4" - 30" (22103)

---

## TABLETOP FINISHES



Maple  
LIGNOpal  
(028)



Andes  
Grey  
(035)



White  
(Writable)



Arctic  
(059)

## METAL FINISHES

## CASTORS





Also pictured  
JUMPER Air Active: Page 14

### FLIPTABLE-RU DETAILS

MODEL	ITEM CODE	HEIGHT	FRAME	TABLETOP FINISH
22103	1030	● Blue Dot - 30"	Arctic (059)	Andes Grey (035)
22103	1002	● Blue Dot - 30"	Arctic (059)	Maple LIGNOpal (028)
22103	1004	● Blue Dot - 30"	Arctic (059)	White (Writable)
22103	1038	Height-adjustable in steps 25 1/4" - 30"	Arctic (059)	Andes Grey (035)
22103	1047	Height-adjustable in steps 25 1/4" - 30"	Arctic (059)	Maple LIGNOpal (028)
22103	1048	Height-adjustable in steps 25 1/4" - 30"	Arctic (059)	White (Writable)
22103	1039	Height-adjustable in steps 29 1/8" - 38 1/8"	Arctic (059)	Andes Grey (035)
22103	1046	Height-adjustable in steps 29 1/8" - 38 1/8"	Arctic (059)	Maple LIGNOpal (028)
22103	1049	Height-adjustable in steps 29 1/8" - 38 1/8"	Arctic (059)	White (Writable)
22111	1018	● Blue Dot - 30"	Arctic (059)	Andes Grey (035)
22111	1028	● Blue Dot - 30"	Arctic (059)	Maple LIGNOpal (028)
22111	1017	Height-adjustable in steps 29 1/8" - 38 1/8"	Arctic (059)	Andes Grey (035)
22111	1023	Height-adjustable in steps 29 1/8" - 38 1/8"	Arctic (059)	Maple LIGNOpal (028)
22111	1024	Height-adjustable in steps 29 1/8" - 38 1/8"	Arctic (059)	White (Writable)

# SHIFT+ FUSIONFLIP

## Freeform table with folding top

This easily combined freeform table can be used for the most diverse group sizes. The tables can be pushed together as needed to create spaces for larger groups. The foldable top allows the tables to be nested together to save space when not in use. Four castors provide for problem-free mobility and the tables are light enough to be moved by students of all ages. The FusionFlip has curves that fit all other Shift+ product curves, so it can nest with other desks and tables in an unlimited set of configurations.



## THE MODELS



MODEL: 1451  
DIMENSIONS: 55 1/2" x 31 1/8"

---

## TABLE HEIGHTS

● Red Dot - 25 1/4"    ● Blue Dot - 30"

---

## TABLETOP FINISHES



Maple  
LIGNOpal  
(028)



Andes  
Grey  
(035)



White  
(Writable)

## METAL FINISHES



Arctic  
(059)

## CASTORS







**Also pictured**

PantoMove-LuPo: Page 22

Shift+ Transfer Teach: 78

Shift+ Transfer Box: Page 82

**SHIFT+ FUSIONFLIP DETAILS**

MODEL	ITEM CODE	HEIGHT	FRAME	TABLETOP FINISH
1451	1033	● Red Dot - 25 1/4"	Arctic (059)	Maple LIGNOpal (028)
1451	1048	● Red Dot - 25 1/4"	Arctic (059)	Andes Grey (035)
1451	1008	● Red Dot - 25 1/4"	Arctic (059)	White (Writable)
1451	1006	● Blue Dot - 30"	Arctic (059)	Maple LIGNOpal (028)
1451	1004	● Blue Dot - 30"	Arctic (059)	Andes Grey (035)
1451	1002	● Blue Dot - 30"	Arctic (059)	White (Writable)

# RONDOLIFT-KF

## Height-adjustable sit-at and stand-at table

The RondoLift table raises the bar for teachers and students. The fully-adjustable tabletop gives it sit-at or stand-at functionality. Lockable castors make it mobile. And, round or square tabletop models are available with an optional tilt mechanism, allowing them to be stowed in a snap or converted to a projection or display surface. Quick, creative options that help take education up a notch.



## THE MODELS



MODELS: 2822,  
2822-S (Writable)



MODELS: 2824,  
2824-S (Writable), 2827,  
2827-S (Writable)



MODEL: 2828



MODEL: 2829

## TABLE DIMENSIONS

Ø: 35 1/2" (2824)

Ø: 47 1/4" (2827)

WxD: 39 3/8" x 39 3/8" (2822)

WxD: 51 1/4" x 31 1/2" (2828)

WxD: 47 1/4" x 33 1/8" (2829)

## TABLE HEIGHT

Adjustable from 27 1/4" - 44 1/2"

## TABLETOP FINISHES



Maple  
LIGNOpal  
(028)



Andes  
Grey  
(035)



White  
(Writable)

## METAL FINISHES



Arctic  
(059)

## CASTORS









## RONDOLIFT-KF DETAILS

MODEL	ITEM CODE	DIMENSIONS	FRAME	TABLETOP FINISH	HINGED	SHAPE
2822	053	WxD: 39 3/8" x 39 3/8"	Arctic (059)	Andes Grey (035)	Yes	Square
2822	292	WxD: 39 3/8" x 39 3/8"	Arctic (059)	Maple LIGNOpal (028)	Yes	Square
2822-S	443	WxD: 39 3/8" x 39 3/8"	Arctic (059)	White (Writable)	Yes	Square
2824	292	Ø: 35 1/2"	Arctic (059)	Maple LIGNOpal (028)	Yes	Round
2824	1058	Ø: 35 1/2"	Arctic (059)	Andes Grey (035)	Yes	Round
2824-S	443	Ø: 35 1/2"	Arctic (059)	White (Writable)	Yes	Round
2827	013	Ø: 47 1/4"	Arctic (059)	Andes Grey (035)	Yes	Round
2827	292	Ø: 47 1/4"	Arctic (059)	Maple LIGNOpal (028)	Yes	Round
2827-S	443	Ø: 47 1/4"	Arctic (059)	White (Writable)	Yes	Round
2828	001*	WxD: 51 1/4" x 31 1/2"	Arctic (059)	Maple LIGNOpal (028)	No	Elliptical
2828	1009*	WxD: 51 1/4" x 31 1/2"	Arctic (059)	Andes Grey (035)	No	Elliptical
2829	005*	WxD: 47 1/4" x 33 1/8"	Arctic (059)	Maple LIGNOpal (028)	No	Barrel
2829	109*	WxD: 47 1/4" x 33 1/8"	Arctic (059)	Andes Grey (035)	Yes	Barrel

\*Models 2828 and 2829 have a single drawer with unified locking.

NOTE: Models with hinged tops come with 18001 locking.

# SHIFT+ INTERACT

## Height-adjustable sit-at/stand-at lectern

The Interact has a curved top that fits all other Shift+ product curves, so it can nest with other desks and tables in an unlimited set of configurations. The height can be quickly adjusted from 28" to 45<sup>1</sup>/<sub>4</sub>", and the castors make it easy to move around the room. A closed book box under the table offers convenient storage on the go.



## THE MODELS



MODEL: 1444  
DIMENSIONS: 26 <sup>3</sup>/<sub>8</sub>" x 20"

---

## TABLE HEIGHTS

Adjustable from 28" - 45 <sup>1</sup>/<sub>4</sub>"

---

## TABLETOP FINISHES



Maple  
LIGNOpal  
(028)



Andes  
Grey  
(035)



White  
LIGNOpal  
(328)

## METAL FINISHES



Arctic  
(059)

## CASTORS



09:23



**Also pictured**  
PantoSwing-LuPo: Page 18  
PantoMove-Plus: Page 22

**SHIFT+ INTERACT DETAILS**

MODEL	ITEM CODE	HEIGHT	FRAME	TABLETOP FINISH
1444	1038	Adjustable from 28" - 45 1/4"	Arctic (059)	Andes Grey (035)
1444	101	Adjustable from 28" - 45 1/4"	Arctic (059)	Maple LIGNOpal (028)
1444	103	Adjustable from 28" - 45 1/4"	Arctic (059)	White LIGNOpal (328)



# SHIFT+ TRANSFER

## Mobile shelving elements & teacher's cabinet

The Transfer mobile shelving elements are available through the QuickShip Program in two shapes – 60° curved and straight. They can be formed into various combinations, as well as used with the seating elements to create separate seating areas. The Shift+ Transfer Teach (teacher's cabinet) equips the teacher with a mobile storage space with a lockable door, and two of the four castors are lockable. As a freely mobile element, it can accompany the teacher anywhere in the room or building.

All Transfer units have bases made from welded steel, providing superior strength and longevity. Stocked elements also include handles and connecting magnets on each side for easy transportation, reconfiguration, and linking.



## THE MODELS

### Mobile Shelving Elements



MODELS: 45292, 45293



MODELS: 45303, 45317, 45318

### Transfer Teach



MODEL: 45319

---

## CABINET DIMENSIONS

WxHxD: 60 1/8" x 36" x 16 3/4" (45292)

WxHxD: 60 1/8" x 43 3/8" x 16 3/4" (45293)

WxHxD: 41 5/8" x 43 3/8" x 20 7/8" (45303)

WxHxD: 41 5/8" x 36" x 16 3/4" (45317)

WxHxD: 41 5/8" x 43 3/8" x 16 3/4" (45318, 45319)

---

## LAMINATE FINISHES



Maple  
LIGNOpal  
(028)

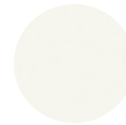


White  
LIGNOpal  
(328)

## METAL FINISHES



Arctic  
(059)



White  
(091)

## CASTORS





**Also pictured**  
JUMPER Air Active: Page 14  
Shift+ ThumbPrint: Page 54

**SHIFT+ TRANSFER DETAILS**

MODEL	ITEM CODE	HEIGHT	FRAME	LAMINATE FINISH	SHAPE
45292	001	36"	Arctic (059)	Maple LIGNOpal (028)	60°
45292	292	36"	White (091)	White LIGNOpal (328)	60°
45293	022	43 <sup>3</sup> / <sub>8</sub> "	White (091)	White LIGNOpal (328)	60°
45293	1030	43 <sup>3</sup> / <sub>8</sub> "	Arctic (059)	Maple LIGNOpal (028)	60°
45303	028	43 <sup>3</sup> / <sub>8</sub> "	Arctic (059)	Maple LIGNOpal (028)	Straight (2-sided)
45303	292	43 <sup>3</sup> / <sub>8</sub> "	White (091)	White LIGNOpal (328)	Straight (2-sided)
45317	128	36"	Arctic (059)	Maple LIGNOpal (028)	Straight
45317	292	36"	White (091)	White LIGNOpal (328)	Straight
45318	028	43 <sup>3</sup> / <sub>8</sub> "	Arctic (059)	Maple LIGNOpal (028)	Straight
45318	1028	43 <sup>3</sup> / <sub>8</sub> "	White (091)	White LIGNOpal (328)	Straight
45319	079*	43 <sup>3</sup> / <sub>8</sub> "	Arctic (059)	Maple LIGNOpal (028)	Straight
45319	292*	43 <sup>3</sup> / <sub>8</sub> "	White (091)	White LIGNOpal (328)	Straight

\*With pull out suspension frame and door assembled on the left.

# SHIFT+ TRANSFER BOX

## Mobile storage cabinets

The Transfer mobile storage cabinets are equipped with strong connecting magnets, allowing them to be combined with any other Shift+ Transfer cabinets to create a variety of shapes and group seating areas. Stocked elements are available in two heights and include handles on each side for easy transportation and reconfiguration.





## THE MODELS



MODEL: 45320

MODEL: 45325

---

## CABINET DIMENSIONS

WxHxD: 41 5/8" x 36" x 16 3/4" (45320)  
WxHxD: 41 5/8" x 43 3/8" x 16 3/4" (45325)

---

### LAMINATE FINISHES



Maple  
LIGNOpal  
(028)

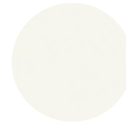


White  
LIGNOpal  
(328)

### METAL FINISHES



Arctic  
(059)



White  
(091)

### BIN COLORS



Anthracite  
(015)

### CASTORS





**SHIFT+ TRANSFER STORAGE DETAILS**

MODEL	ITEM CODE	HEIGHT	FRAME	LAMINATE FINISH	BIN SIZE
45320	111	36"	Arctic (059)	Maple LIGNOpal (028)	3"
45320	222	36"	White (091)	White LIGNOpal (328)	3"
45320	115	36"	Arctic (059)	Maple LIGNOpal (028)	6"
45320	232	36"	White (091)	White LIGNOpal (328)	6"
45325	111	43 <sup>3</sup> / <sub>8</sub> "	Arctic (059)	Maple LIGNOpal (028)	3"
45325	222	43 <sup>3</sup> / <sub>8</sub> "	White (091)	White LIGNOpal (328)	3"
45325	115	43 <sup>3</sup> / <sub>8</sub> "	Arctic (059)	Maple LIGNOpal (028)	6"
45325	232	43 <sup>3</sup> / <sub>8</sub> "	White (091)	White LIGNOpal (328)	6"

## AGILE SPACES

Creating truly agile learning environments is a vital consideration for modern learning cultures within schools, especially since children can only develop in a healthy and performance-effective way if they get enough physical activity.

This is why schools today are schools in motion: comfortably alternating between sitting and standing when working, dynamic rather than rigid sitting postures, with movement integrated into learning in a variety of ways to keep attention and concentration levels up. Dynamic and ergonomic student furniture makes a fundamental contribution here. Agile furniture can be easily reconfigured to fit an endless variety of educational styles, and can be utilized in classrooms, collaborative spaces, and media centers from K-12 through higher education.

By seamlessly integrating ergonomics, adaptable furniture, layout, and room function, VS products allow learning environments to be highly flexible, yet remain structured and coordinated. This is an important interaction to promote well-being and bolster academic success for students of all ages.

See the following pages for a few sample classroom layouts.

Learn more: [www.vsamerica.com/agilespace](http://www.vsamerica.com/agilespace)s

*Classroom layout samples shown are for approximately 20-25 students in a 750-800 square foot classroom.*

## CLASSROOM 1: SEMINAR



### PRODUCT LIST & QUANTITY



**JUMPER AIR ACTIVE**  
Quantity: 20



**SHIFT+ INTERACT**  
Quantity: 1



**SHIFT+ TRANSFER BOX**  
Quantity: 2



**PANTOMOVE-PLUS**  
Quantity: 1



**LITETABLE-ST**  
Quantity: 12



**SHIFT+ TRANSFER STRAIGHT**  
Quantity: 2



**LUPOSTOOL**  
Quantity: 2



**RONDOLIFT-KF**  
Quantity: 1



**SHIFT+ TRANSFER CURVE**  
Quantity: 2



**HOKKI**  
Quantity: 3



**FLIPTABLE-RU**  
Quantity: 3



**SHIFT+ LANDSCAPE**  
Quantity: 2

*Layout samples shown are for approximately 20-25 students in a 750-800 square foot classroom.*



## CLASSROOM 2: SMALL GROUP WORK

Layout Option A



### PRODUCT LIST & QUANTITY



**PANTOSWING-LUPO**  
Quantity: 8



**HOKKI**  
Quantity: 5



**FLIPTABLE-RU**  
Quantity: 1



**COMPASS-LUPO**  
Quantity: 12



**SHIFT+ INTERACT**  
Quantity: 1



**SHIFT+ TRANSFER TEACH**  
Quantity: 2



**PANTOMOVE-PLUS**  
Quantity: 1



**LITETABLE-ST**  
Quantity: 20



**SHIFT+ TRANSFER CURVE**  
Quantity: 2



**SOLO**  
Quantity: 4



**RONDOLIFT-KF**  
Quantity: 1



**SHIFT+ LANDSCAPE**  
Quantity: 2

*Layout samples shown are for approximately 20-25 students in a 750-800 square foot classroom.*

# CLASSROOM 2: SOCRATIC

Layout Option B



## PRODUCT LIST & QUANTITY



**PANTOSWING-LUPO**  
Quantity: 8



**COMPASS-LUPO**  
Quantity: 12



**PANTOMOVE-PLUS**  
Quantity: 1



**SOLO**  
Quantity: 4



**HOKKI**  
Quantity: 5



**SHIFT+ INTERACT**  
Quantity: 1



**LITETABLE-ST**  
Quantity: 20



**RONDOLIFT-KF**  
Quantity: 1



**FLIPTABLE-RU**  
Quantity: 1



**SHIFT+ TRANSFER TEACH**  
Quantity: 2



**SHIFT+ TRANSFER CURVE**  
Quantity: 2



**SHIFT+ LANDSCAPE**  
Quantity: 2

*Layout samples shown are for approximately 20-25 students in a 750-800 square foot classroom.*

## CLASSROOM 3: SMALL GROUP WORK

Layout Option A



### PRODUCT LIST & QUANTITY



**JUMPER AIR ACTIVE**  
Quantity: 8



**SHIFT+ INTERACT**  
Quantity: 1



**SHIFT+ TRANSFER BOX**  
Quantity: 1



**PANTOMOVE-LUPO**  
Quantity: 12



**SHIFT+ THUMBPRINT**  
Quantity: 16



**SHIFT+ TRANSFER TEACH**  
Quantity: 1



**PANTOMOVE-PLUS**  
Quantity: 1



**RONDOLIFT-KF**  
Quantity: 1



**SHIFT+ TRANSFER CURVE**  
Quantity: 3



**HOKKI**  
Quantity: 5



**SHIFT+ FUSIONFLIP**  
Quantity: 2



**SHIFT+ LANDSCAPE**  
Quantity: 2

*Layout samples shown are for approximately 20-25 students in a 750-800 square foot classroom.*

**CLASSROOM 3: LECTURE**

Layout Option B

**PRODUCT LIST & QUANTITY**

**JUMPER AIR ACTIVE**  
Quantity: 8



**SHIFT+ INTERACT**  
Quantity: 1



**SHIFT+ TRANSFER BOX**  
Quantity: 1



**PANTOMOVE-LUPO**  
Quantity: 12



**SHIFT+ THUMBPRINT**  
Quantity: 16



**SHIFT+ TRANSFER TEACH**  
Quantity: 1



**PANTOMOVE-PLUS**  
Quantity: 1



**RONDOLIFT-KF**  
Quantity: 1



**SHIFT+ TRANSFER CURVE**  
Quantity: 3



**HOKKI**  
Quantity: 5



**SHIFT+ FUSIONFLIP**  
Quantity: 2



**SHIFT+ LANDSCAPE**  
Quantity: 2

*Layout samples shown are for approximately 20-25 students in a 750-800 square foot classroom.*

## CLASSROOM 4: DIFFERENTIATED ZONES

Layout Option A



### PRODUCT LIST & QUANTITY



**JUMPER AIR ACTIVE**  
Quantity: 12



**PANTOMOVE-LUPO**  
Quantity: 8



**PANTOMOVE-PLUS**  
Quantity: 1



**HOKKI**  
Quantity: 5



**SHIFT+ THUMBPRINT**  
Quantity: 12



**RONDOLIFT-KF**  
Quantity: 2



**SHIFT+ FUSIONFLIP**  
Quantity: 4



**SHIFT+ TRANSFER  
STRAIGHT 2-SIDED**  
Quantity: 2



**SHIFT+ TRANSFER CURVE**  
Quantity: 2



**SHIFT+ TRANSFER  
TEACH**  
Quantity: 1



**SHIFT+ LANDSCAPE**  
Quantity: 2

*Layout samples shown are for approximately 20-25 students in a 750-800 square foot classroom.*



**CLASSROOM 4: COLLABORATIVE**

Layout Option B

**PRODUCT LIST & QUANTITY**

**JUMPER AIR ACTIVE**  
Quantity: 12



**SHIFT+ THUMBPRINT**  
Quantity: 12



**SHIFT+ TRANSFER CURVE**  
Quantity: 2



**PANTOMOVE-LUPO**  
Quantity: 8



**RONDOLIFT-KF**  
Quantity: 2



**SHIFT+ TRANSFER TEACH**  
Quantity: 1



**PANTOMOVE-PLUS**  
Quantity: 1



**SHIFT+ FUSIONFLIP**  
Quantity: 4



**SHIFT+ LANDSCAPE**  
Quantity: 2



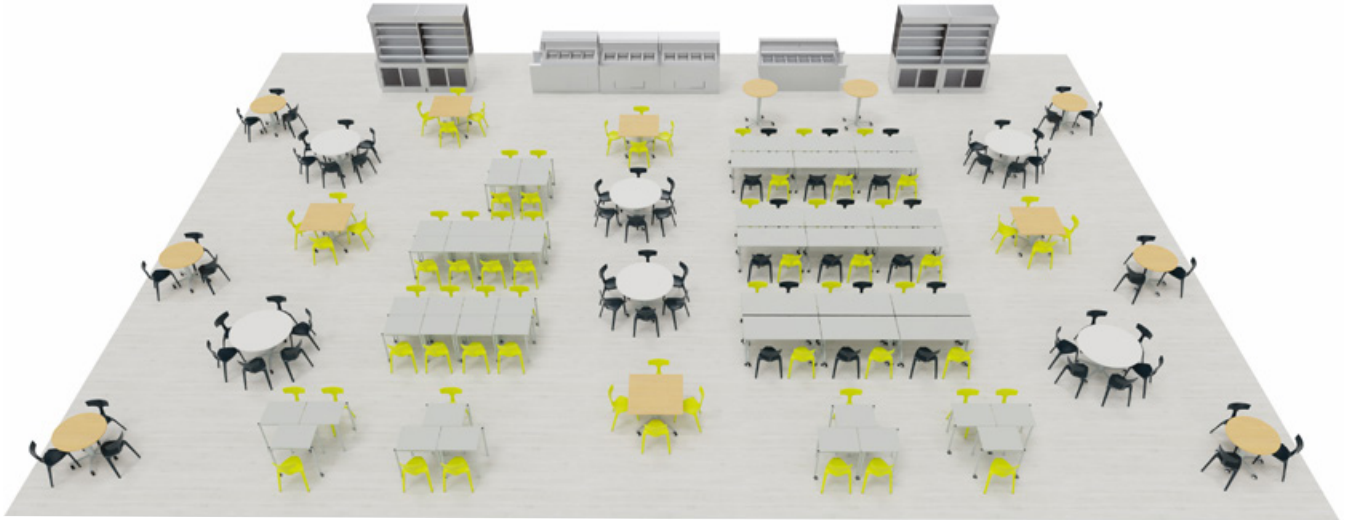
**HOKKI**  
Quantity: 5



**SHIFT+ TRANSFER STRAIGHT 2-SIDED**  
Quantity: 2

*Layout samples shown are for approximately 20-25 students in a 750-800 square foot classroom.*

## CAFETERIA LAYOUT



## PRODUCT LIST & QUANTITY



**STAKKI**  
Quantity: 152



**RONDOLIFT-KF**  
Quantity: 14



**FLIPTABLE-RU**  
Quantity: 18



**LITETABLE-ST**  
Quantity: 32



**RONDOLIFT-KF**  
Quantity: 5

## HALLWAY LAYOUT



## PRODUCT LIST & QUANTITY



**STAKKI**  
Quantity: 3

**RONDOLIFT-KF**  
Quantity: 1



**SHIFT+ TRANSFER CURVE**  
Quantity: 3



**SHIFT+ TRANSFER STRAIGHT**  
Quantity: 3



**SHIFT+ LANDSCAPE**  
Quantity: 4

# VS AMERICA QUICKSHIP PROGRAM

CONNECT WITH US  
ON SOCIAL!



Scan this code with the camera app on your smart-  
phone and find us on your favorite platform.

VS America, Inc. | 1940 Abbott St. | Charlotte, NC 28203  
**704.378.6500 | [www.vsamerica.com](http://www.vsamerica.com)**

art no. QS 10.22 V02

**FALL 2022**