

FRIO COUNTY, TEXAS
AN AMENDED SUBDIVISION PLAT OF
SENDERO RIDGE RANCH

THE FRIO COUNTY TAX APPRAISAL DISTRICT, A TAXING AUTHORITY FOR THE TAXING ENTITIES IN FRIO COUNTY, TEXAS, DOES HEREBY CERTIFY THAT THERE ARE CURRENTLY NO DELINQUENT TAXES DUE OR OWING ON THE PROPERTY DESCRIBED FOR THE TAXING ENTITIES FOR WHOM IT ACTS AS A COLLECTOR.
 DATED THIS THE 11 DAY OF April 2023.

FRIO COUNTY TAX APPRAISAL DISTRICT
 BY: Edward Garza

THE FRIO COUNTY TAX COLLECTOR, A TAXING AUTHORITY FOR THE TAXING ENTITIES IN FRIO COUNTY, TEXAS, DOES HEREBY CERTIFY THAT THERE ARE CURRENTLY NO DELINQUENT TAXES DUE OR OWING ON THE PROPERTY DESCRIBED BY THIS PLAT FOR THE TAXING ENTITIES FOR WHOM IT ACTS AS A COLLECTOR.
 DATED THIS THE 11 DAY OF April 2023.

FRIO COUNTY TAX COLLECTOR
 BY: Anna K. Alamy

I HEREBY CERTIFY THIS PLAT WAS APPROVED THIS 13th DAY OF April 2023 BY THE FRIO COUNTY COMMISSIONERS' COURT AND MAY BE FILED FOR RECORD IN THE PLAT RECORDS OF FRIO COUNTY BY THE COUNTY CLERK.

Socchelli Amato
 COUNTY JUDGE

WITNESS MY HAND THIS THE 13th DAY OF April 2023.

Norma Aguilar
 NOTARY PUBLIC



FILED FOR RECORD THIS THE 13th DAY OF April 2023 IN CABINET 1 SLIDE 163B



[Signature]
 COUNTY CLERK

CURVE	DELTA ANGLE	RADIUS	ARC	TANGENT	CHORD	CHORD BEARING
C 1	29°37'58"	34.00'	17.58'	8.99'	17.39'	S 23°48'47"W
C 2	31°13'31"	66.00'	35.97'	18.44'	35.53'	S 19°01'27"W
C 11	29°38'34"	34.00'	17.58'	8.99'	17.39'	N 14°26'52"W
C 12	31°13'29"	66.00'	35.97'	18.44'	35.53'	N 09°39'41"W

NOTES:

WATER SERVICE WILL BE PROVIDED BY BENTON CITY WATER AND WILL BE ON THE WEST SIDE OF THE ROAD
 ELECTRIC SERVICE WILL BE PROVIDED BY MEDINA ELECTRIC COOP AND WILL BE ON THE EAST SIDE OF THE ROAD
 SEWER SERVICE WILL BE INDIVIDUAL SEWAGE FACILITIES

PREPARED BY:
 HOWARD SURVEYING
 TBPEL'S FIRM NO. 10125700
 402 STATE HWY 173 SOUTH
 HONDO, TEXAS 78861
 830-426-4776

SURVEYED ON THE GROUND: APRIL 25, 2018
 75 RESIDENTIAL LOTS TOTAL
 7.02 ACRES IN ROAD
 DATE PREPARED: APRIL 4, 2023
 FEMA FLOOD MAPS FOR UNINCORPORATED AREAS IN FRIO COUNTY ARE NOT AVAILABLE.

PREPARED FOR:
 SENDERO RIDGE DEVELOPMENT, LLC
 4711 SHAVANO OAK SUITE 102
 SAN ANTONIO, TEXAS 78249

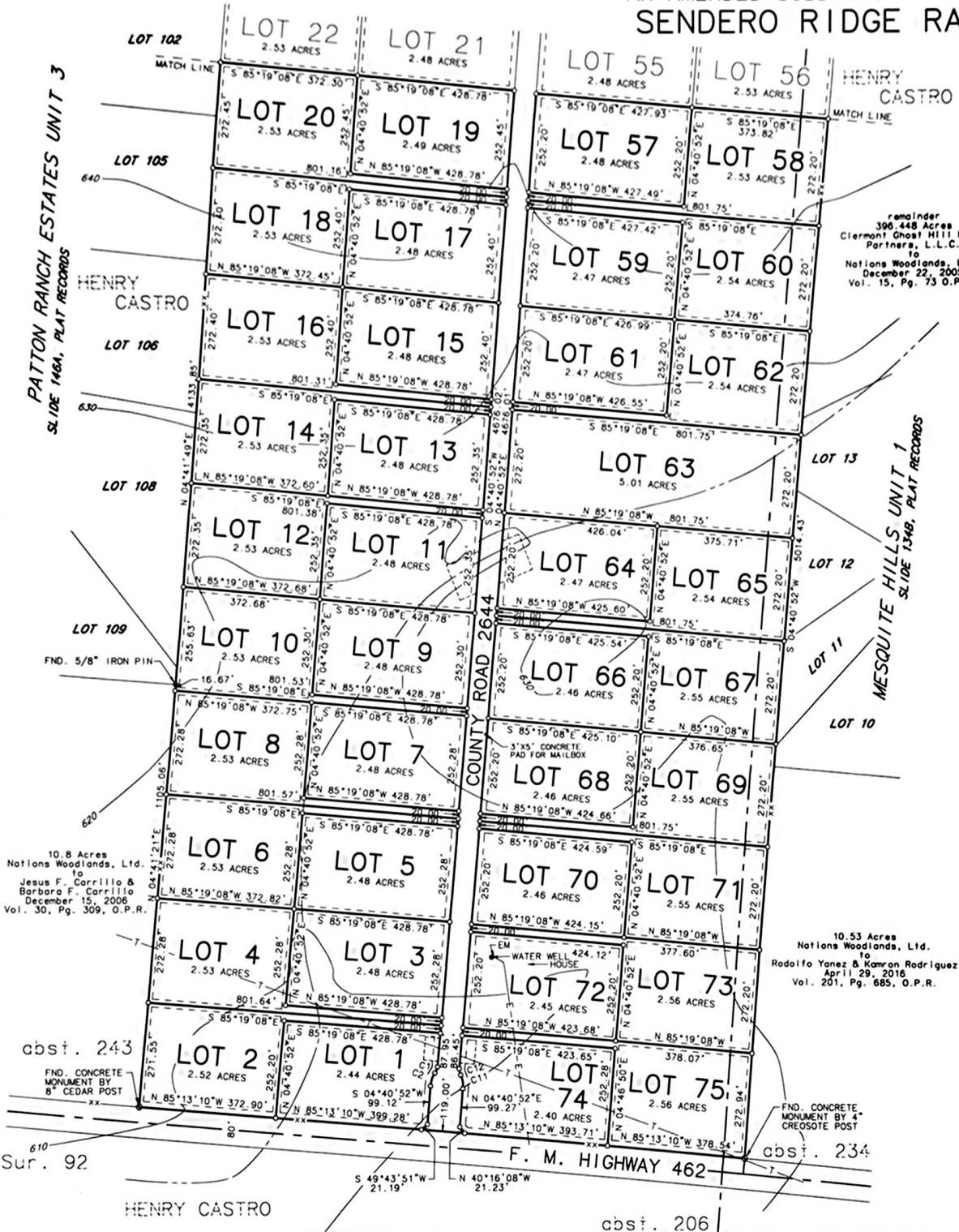
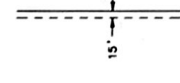


SCALE 1" = 200'

10-FOOT ALL PURPOSE, POSTAL DRAINAGE & UTILITY EASEMENT ALONG ALL REAR AND SIDE LOT LINES.

15-FOOT ALL PURPOSE, POSTAL DRAINAGE & UTILITY EASEMENT ALONG ALL FRONT LOT LINES.

- LEGEND:
- E — OVERHEAD ELECTRIC LINE
 - T — OVERHEAD TRANSMISSION LINE
 - XX — FENCE LINE
 - — — ORIGINAL SURVEY LINE
 - O.P.R. — OFFICIAL PUBLIC RECORDS FRIO COUNTY, TEXAS



PATTON RANCH ESTATES UNIT 3
 SLIDE 146A, PLAT RECORDS

MESQUITE HILLS UNIT 1
 SLIDE 134B, PLAT RECORDS

10.8 Acres
 Nations Woodlands, Ltd.
 to
 Jesus F. Carrillo &
 Barbara F. Carrillo
 December 15, 2006
 Vol. 30, Pg. 309, O.P.R.

10.53 Acres
 Nations Woodlands, Ltd.
 to
 Rodolfo Yanez & Kamron Rodriguez
 April 29, 2016
 Vol. 201, Pg. 685, O.P.R.

cbst. 243
 FND. CONCRETE MONUMENT BY 8" CEDAR POST

FND. CONCRETE MONUMENT BY 4" CROSCOTE POST

Sur. 92

cbst. 234

cbst. 206