

STARTING THE SOLLINER®

Before launching the boat make sure to get familiar with it.

1. Remove the transport belt hooped vertically around the boat.
2. Attach all 10 battery terminal connectors (5 batteries) to battery terminal posts: (+) first, then (-).
Attention! Make sure that all clamps are properly tightened (slack in the terminals may cause failure).
3. Remove photovoltaic panels cover placed on the canopy top.
4. Remove the engine transport lock (two bolts and metal flat bar).



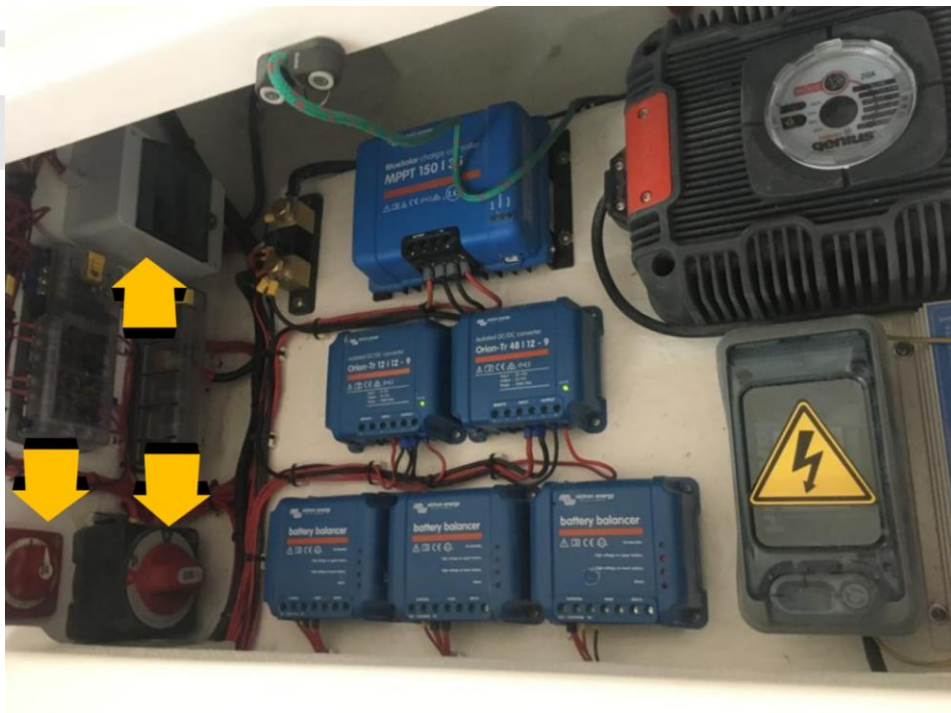
5. In order to bring the engine down, find an orange switch in the stern locker and put it from LOCK to TILT position, using the emergency tiller ended with the fork. Next, release the attached string from clam cleat by pulling and lifting the string. Slowly

bring the engine down manually and put the string back into the cleat. Put the switch back from TILT to LOCK position.

Attention! When launching the boat using a crane, the engine should already be in downward position. When launching the boat using a trailer and a slip, the engine should already be lifted.



6. Turning the power ON inside the stern locker:
 - find two red switches in the stern locker and set both into ON position
 - find fuse box and set all fuses into ON position.



7. Starting the engine:

- make sure that throttle is in neutral position
- put the magnetic safety stop key on the Torqeedo remote throttle
- calibrate the Torqeedo remote throttle (see separate manual)
- calibrate the battery monitor - Victron Energy (see separate manual).

8. To be able to lift the canopy onshore, the orange magnetic safety key should be affixed to the side of the entrance and one of two buttons (located behind the corner of the right side of the entrance) pressed on.

