



PERLA BAHIA

# PERLA BAHIA

## YOUR BEST INVESTMENT



# PERLA BAHIA

A beautiful and exclusive concept of 180 Condos, 42 Villas and an amazing artificial beach in the Punta Cana area.

Is a private community located in Bavaro, in the center of the new highway, close to Downtown Punta Cana

Punta Cana is, without a doubt, one of the most developed destinations in the Americas in recent years, thanks to an infrastructure that allows immediate interconnection to any destination in the world.

It has its airport, tourist ports and all the services to live to the fullest. An active life surrounded by nature, close to the best beaches in the Caribbean and extensive vegetation.



# LOCATION



Less than 15 min drive to Bávaro Beach



25 mins to the Punta Cana Int.Airport (PUJ)



10 mins to Melia Hotel



10 mins to Downtown Punta Cana



15 mins to Katmandú Amusement Park





# AMENITIES



Artificial Beach



Resort-Style living



Restaurants



Commercial amenities



Pools



Hotel



Private Security 24/7

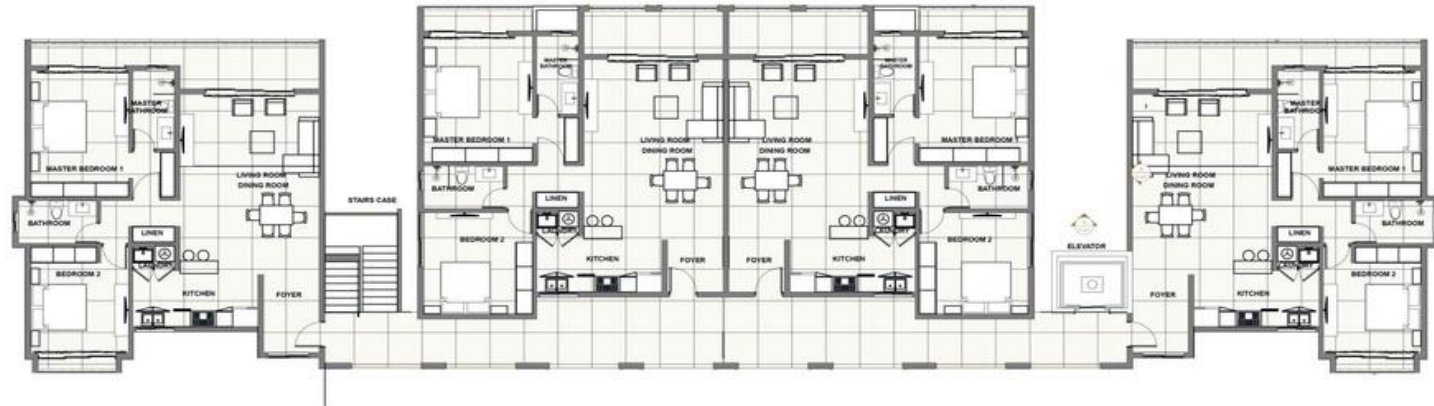


Sidewalks



Each lot comes with space for a private pool





APARTMENTS FIRSTS TO THIRD FLOOR PLAN



 | **US \$150,000**



# CONDOS CALLE BAHIA

Living Room

2 Bathrooms

Dining Room

Laundry Area

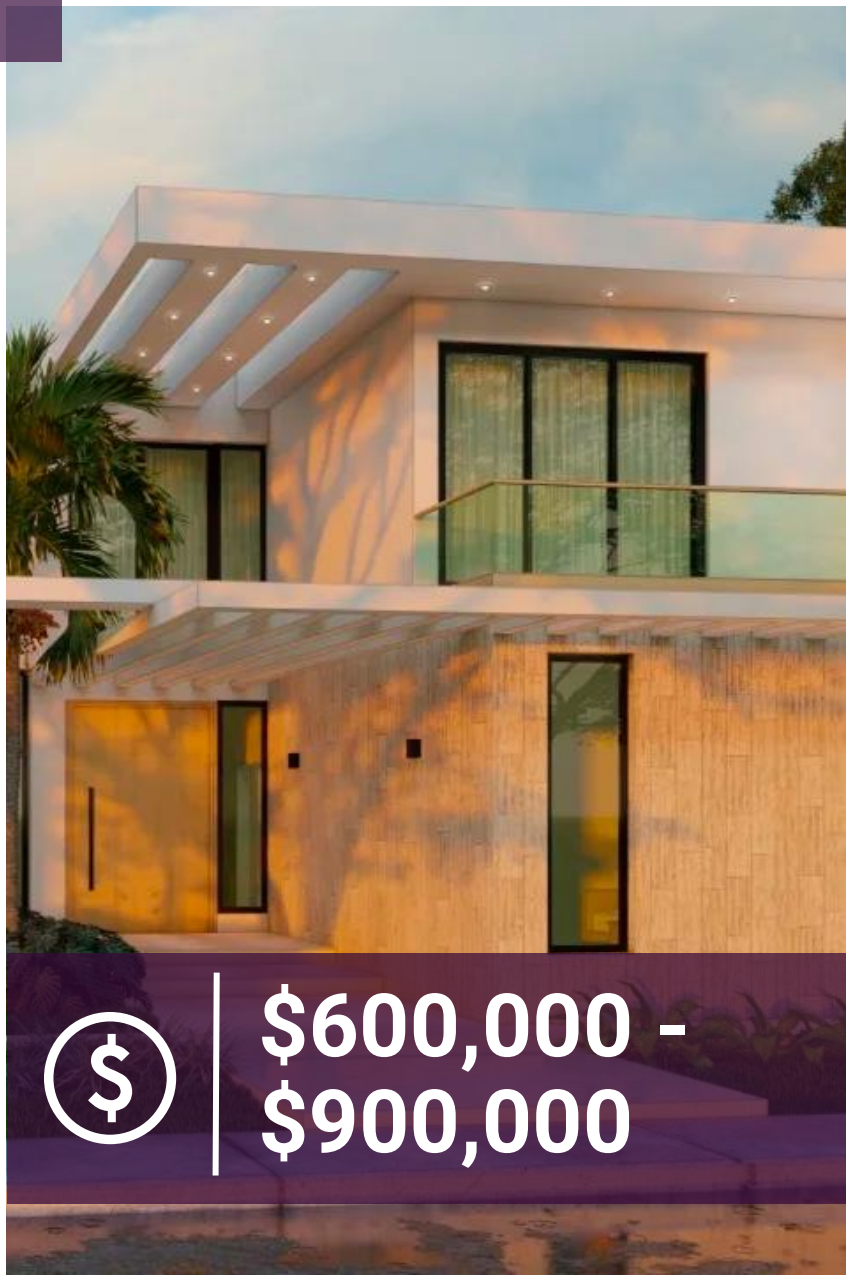
Kitchen

Private garage for Cars

2 Bedroom



**100 SQ. MTS. / 1076 SQ. FT**



Live-in staff quarters

Living Room

Dining Room

2- Story

4-7 Bedrooms

4-7 Bathrooms

LaundryArea

Private garage for 4 Cars



\$600,000 -  
\$900,000







# PAYMENT PLAN A

US \$5,000 Reservation(non refundable 30 days after signing this reservation)

1

2

Complete 10%(with the signing of the contract (about 30 days). / A la firma del contrato)(En 30 dias).

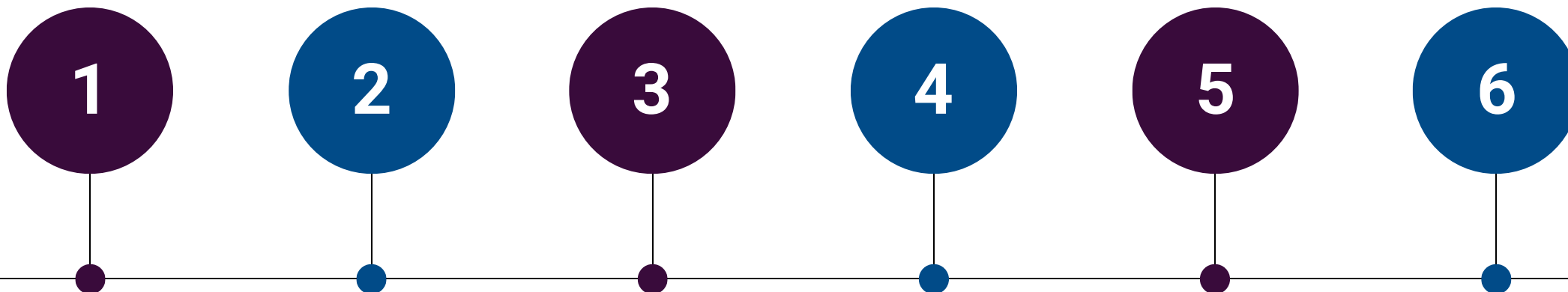
22 monthly payments of US\$5,000 starting 90 days after the signing of the contract.

3

4

Balance with the keys at delivery December 2024. / Con la entrega de las llaves Diciembre 2024.

# PAYMENT PLAN B



US \$5,000 Reservation  
(non refundable 30  
days after signing this  
reservation).

Complete 10%(with  
the signing of the  
contract (about 30  
days) / A la firma del  
contrato)(En 30 dias)

5% in Jul 2022 / en  
Julio 2022

5% December 2022 /  
Diciembre 2022

70% throughout  
construction every 3  
months starting on  
Mar 2023/Durante  
construccion 10%  
comenzando en  
Marzo 2023.

10% with the keys at  
delivery December  
2024 / Con la  
entrega de las llaves  
en Diciembre 2024.



PERLA BAHIA

Your Best Investment