

LE MANS EDITION[®]

C8 EXHAUST *By: Guerin*

Installation Guide for Chevrolet C8 Corvette

STREET | TRACK (No NPP)

**2020-2023 Version w/o Center plate shown in pictures*

**2023-2024 Version w/Center adjustable plate (Guide the same)*



Congratulations on your purchase of **our LeMans Edition Center Exhaust Conversion**

LeMans Edition assumes no responsibility for damages occurring from improper installation, mistakes, improper install conditions, lack of responsible care to yourself or your vehicle, incorrect mods to your vehicle by improper cuts and/or hardware install and/or all previously stated reasons resulting from incompatibility with any other manufacturer's products and/or systems. You take full responsibility for the install. By installing LeMans Edition Center Exhaust Conversion, you indicate that you have read the statement and guide and you agree with the terms LeMans Edition has stated.

Caution Never work on your vehicle if the exhaust system is hot or car has been running. Please allow the car to cool down. Not allowing a cool down period can cause serious injury to anyone or anything that can be harmed by the heat. LeMans Edition suggested wait time for your vehicle to cool is at least 1.5 hours. Please be sure to wear proper eye protection, at all times throughout the install in its entirety. Installing the LeMans Edition Exhaust requires complete under car safety precautions, lift the vehicle using a properly installed hydraulic lift. We suggest using special care while removing the rear bumper. Removal of exhaust procedures listed below. Always wear safety glasses and safety gloves during install. Pictures shown without gloves only for clarity.

Before starting your install, please be sure you have all parts required. List below.

(Check to make sure you have all parts and fiberglass parts before you begin your installation)

| |
|---|
| 2 Street or Track Uppers |
| 2 Modular Elbows |
| 1 X-Pipe with 4 Tips |
| Lower X-Pipe Mounting Bracket (Main Exhaust Mount) |
| 4 V-Bands |
| 1 Center Bezel with Hardware Attached (2 8mm screws 2 washers 2 nylon nuts 2 mounting plates) |
| 2 Side Inserts (Attached 4 mounting plates 8 8mm screws 8 8mm nylon nuts 8 washers 4 mounting plates) |
| |

TOOLS

| |
|--|
| 3/8" Drive Ratchet |
| 1/4" Ratchet |
| 8mm deep well socket |
| 10mm deep well socket |
| 13mm deep well socket |
| 15mm deep well socket |
| T15 Torx |
| 3/8" drive extension 12" 3/8" drive extension 6" |
| 3/8" socket swivel |
| 13mm wrench |
| 10mm wrench |
| 11mm deep well |

SHOP TOOLS

| |
|---|
| Tin Snips (Used To Modify The Factory Grill) |
| Die Grinder (Cut Factory Valve To Install Center Bezel) |
| Spray Lubricant |

Before you begin, please make sure you have all parts, tools and shop tools accounted for. If you find that you need additional tools, please contact a sales representative to help.

Note: After the installation of our LeMans Edition Exhaust system, the controllers for the AFM and NPP valves in the exhaust system should be re-calibrated according to GM Document ID 5406413. Most C8's without NPP will not need a re-calibration. If you need re-calibration, you can place an appointment with your local GM dealer for a check engine light.

LeMans Edition recommends taking your car to the nearest Chevrolet dealer for check engine light recalibration services if your C8 throws a code.

LET'S BEGIN:

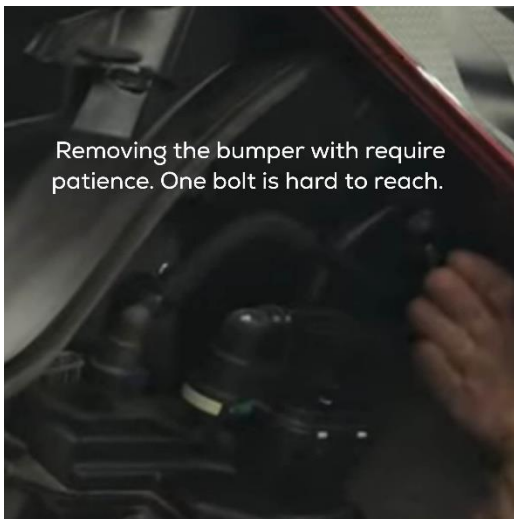
REAR BUMPER REMOVAL:

Lubricate all hangers, rubber isolators, bolts and nuts

1. Remove the carpet and access panels to the trunk



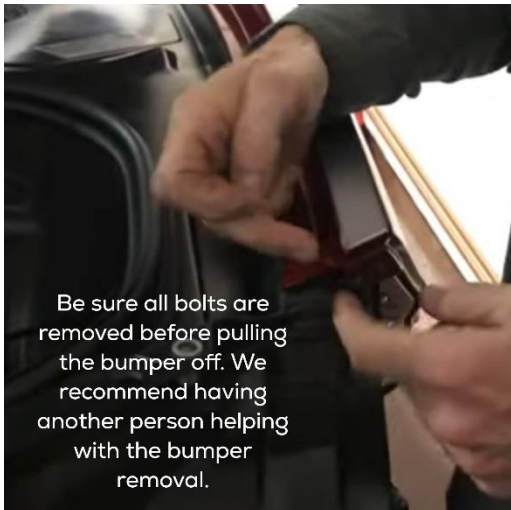
2. Remove the rear wheels
3. Remove the rear splash guards
4. Remove the rear fender liners. NOTE: The entire fender liner does not need to come out. You will only need to peel away the rear portion of the liner to reach the access points behind the fender liner.



5. Loosen the hardware located behind the rear fender. You will be removing one 10mm nut and two 7mm fasteners.
6. Remove the factory lower diffuser panel. Exposing the factory muffler.



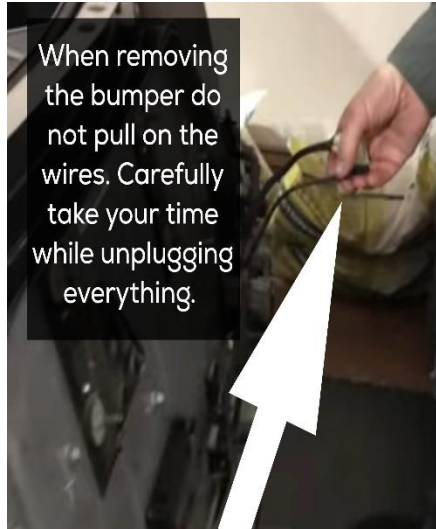
7. Remove the screws located at the top of the rear bumper cover.



Be sure all bolts are removed before pulling the bumper off. We recommend having another person helping with the bumper removal.

8. With 3 people you can now remove the rear bumper. We suggest two people lift the rear bumper cover and slowly move it away from the back of the vehicle while the third person disconnects (unplugs) the three electrical connectors located behind the bumper cover. (Taillight harness and camera harness) ***SEE PHOTO 1A**

9. Disconnect the electrical connector from the valve actuator. There will be 2 AFM valves in the front area and there will be 2 NPP valves in the rear area (if you have factory NPP option). ***SEE PHOTO 2A**

1A

When removing the bumper do not pull on the wires. Carefully take your time while unplugging everything.

2A

10. Remove the rear hanger bolts

11. Remove the bolts from the driver side and passenger side front flange to the catalytic converters.

12. Remove the hangers from the rubber isolators (Mounts)

13. Two people remove the stock exhaust. The exhaust will come out in one piece. Please take precaution as the stock exhaust is heavy. (89lbs)



STOCK EXHAUST

14. Cut the lower valence using a die grinder. The cut should be approximately 9 inches out from the side of the factory valence towards the center. It is very important that the cut is done **AFTER** the second grill bung. So your grill will have the four mounting holes you will need to bolt it on.

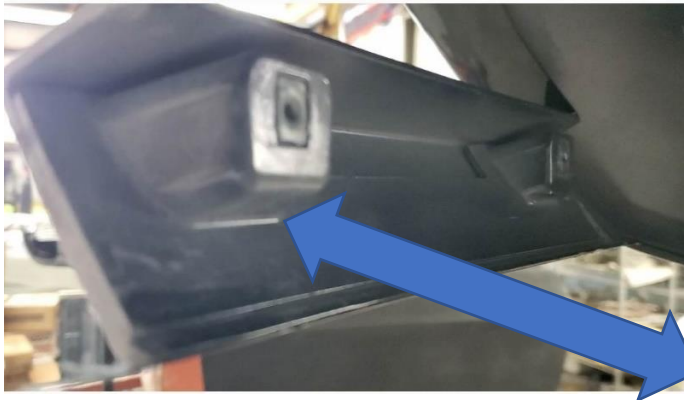


Approx 9 inches towards the center





Be sure to cut AFTER the second bung.

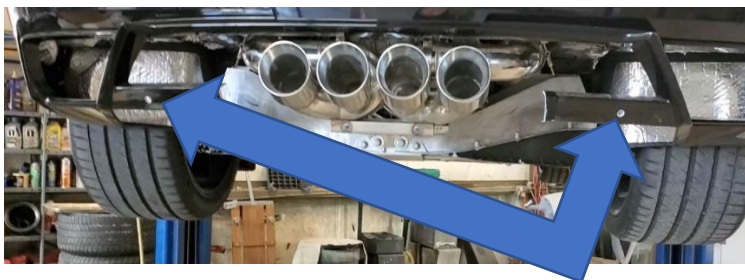


drivers side and passenger side.

Be sure to cut after the second bung on the

15. (Step Drill) Drill corresponding clearance holes (1/2 inch size holes) for the mounting studs on the back of the bezel. Please note, these are clearance holes. You will want the holes to be 1/2" so you have room to adjust.

IMPORTANT: Not doing this may cause the bezel to not adjust for fitment.



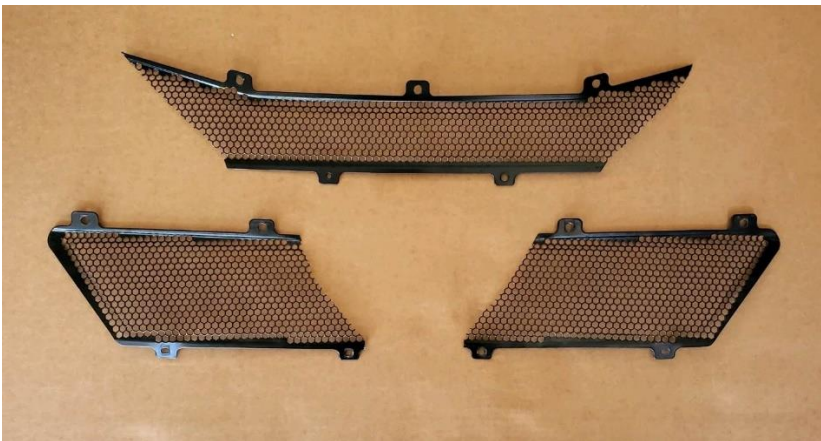
16 A: Put the LeMans Center Bezel In Place To Test For Fitment. (Do not install LeMans Edition Bezel yet)

16 B. Drill holes in the lower part of the factory valence that corresponds to the slots in the LeMans Edition Center Bezel .

17. (Die Grinder or Preferred Rivet Remover) Cut out the four rivets that hold each heat shield in place where the factory tips use to be and remove them. Wearing gloves and safety glasses as stated in the instructions.



18. Remove the heat metal shield. Trim Mesh grill to match the LeMans Edition center bezel. These pictures are for an idea of reference. You can easily line up where to cut by using your rear bumper as reference while off the vehicle.



19. At this point plug in your AFM and NPP Simulator chips (Non NPP = 4 Chips) actuator plugs.



Insert chip



ZipTie the plugs out of the way

20. Install the LeMans Edition Track Or Street Uppers. Leave the ball-and-socket side, with the two hole flange, loose enough that it can still be clocked. You will tighten these two bolts at the very end of the installation once everything is in place and all adjustments have been made.



21. Main Exhaust Mount Included in Kit



22. After removing the factory hanger and mounts from the vehicle, bolt the LeMans Edition Mount (shown above in #21) in place. Install the factory rubber mount. Be sure to put the provided spacers between the factory mount and the mounting plate. Only install the factory rubber mount on one side of the car so you are able to put the exhaust in place.



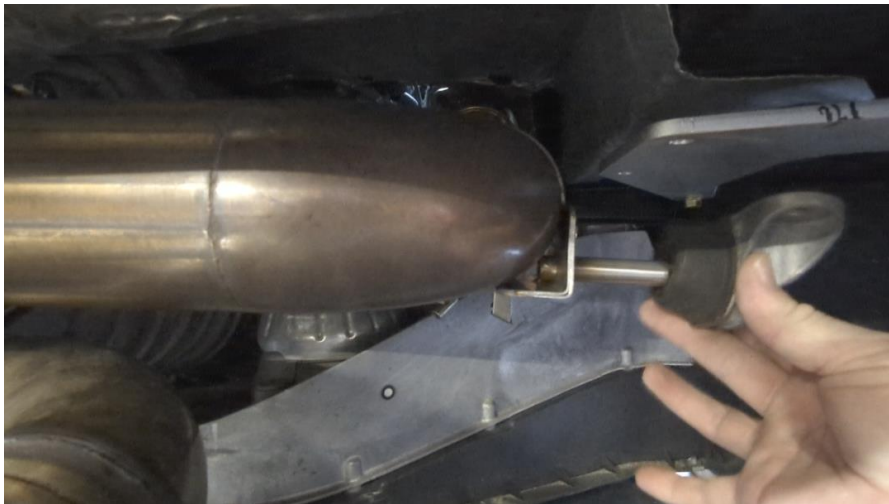
23. Now assemble the X-pipe and elbows. Be sure to leave the V-band clamps loose enough for adjustment.



24. Lift the assembled X-pipe and elbows into place while sliding the mounting pin into the factory rubber mount. Snug the V-bands between the uppers and the elbows.



25. Install the factory rubber mount on the opposing side.



26. Now adjust the tips.

27. Slightly snug the V-Bands.

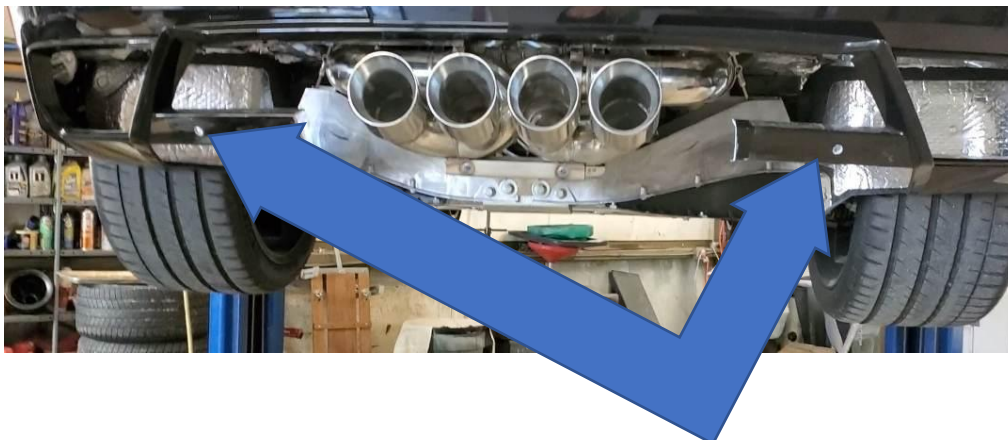
28. You should have a gap of about two fingers between the outside tip and the bottom of the factory valence. Leave the V-Bands just snug since more adjustment may be needed once the bezel is in place.



29. Adjust your tip angle by pushing on tips and tightening (adjusting) the lower mount. At this time, you can hold the LeMans Center Bezel in place for guidance as well. Please be careful so you do not scratch the bezel while adjusting the tips.



30. Install the LeMans Edition Center bezel starting with the upper slotted tabs once you have checked your clearance.



31 A. (Drill the Upper Mounting Holes for the center bezel as stated in 16B if you have not already done so).

31 B. Install the nut plates with the screws and washers hanging down.

31 C. Put the LeMans Edition Center Bezel back in place.

31 D. ADJUST AS NEEDED. Start by tightening the upper LeMans Edition bezel mounts to the factory valence. With the ½" holes, you should have plenty of adjustment to align the side ends of the bezel.



32. Once you are happy with the location of your LeMans Edition center bezel, go ahead and snug the outside studs. (Do not snug the studs until you are satisfied with the bezel location and fitment). Be sure to go back and forth with the studs to keep the LeMans Edition Bezel in its correct place. (Sides will fit tight for fitment)

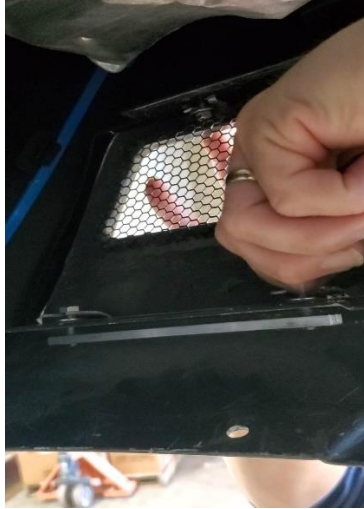




33. (10 mm flat wrench) Install the LeMans Edition Side Inserts. Install side insert mounting plates first. (Heat shield has been removed)



Side insert mounting plates



Slide insert into place, line up and

tighten the bolts. (Both Sides)



- 34.** Tighten all V-Band clamps
- 35.** Remount and torque wheels to factory specs
- 36.** Re-install all mounting hardware for wheel flaps and inner-fenders
- 37.** Re-assemble trunk
- 38.** Make sure the vehicle is ready to start up.
- 39.** Start the car and listen for any exhaust leaks. If you discover an exhaust leak, go back and loosen and re-tighten your V-Band clamps accordingly.



Some like to paint this or put

the black heat shield upgrade you may have purchased now.



LeMansEdition.com
Center Exhaust For You C8

Any questions before, during or after installation please contact a sales representative any time at sales@lemansedition.com or call during business hours at 727-519-8093