

LE MANS EDITION[®]

C8 EXHAUST *By: Guerin*

Installation Guide for Chevrolet C8 Corvette

STREET | TRACK + NPP

**2020-2023 Version w/o Center plate shown in pictures*

**2023-2024 Version w/Center adjustable plate (Guide the same)*



Congratulations on your purchase of **our LeMans Edition Center Exhaust Conversion**

LeMans Edition assumes no responsibility for damages occurring from improper installation, mistakes, improper install conditions, lack of responsible care to yourself or your vehicle, incorrect mods to your vehicle by improper cuts and/or hardware install and/or all previously stated reasons resulting from incompatibility with any other manufacturer's products and/or systems. You take full responsibility for the installation. By installing LeMans Edition Center Exhaust Conversion, you indicate that you have read the statement and guide and you agree with the terms LeMans Edition has stated.

1

Caution Never work on your vehicle if the exhaust system is hot or car has been running. Please allow the car to cool down. Not allowing a cool down period can cause serious injury to anyone or anything that can be harmed by the heat. LeMans Edition suggested wait time for your vehicle to cool is at least 1.5 hours. Please be sure to wear proper eye protection, at all times throughout the install in its entirety. Installing the LeMans Edition Exhaust requires complete under car safety precautions, lift the vehicle using a properly installed hydraulic lift. We suggest using special care while removing the rear bumper. Removal of exhaust procedures listed below. Always wear safety glasses and safety gloves during install. Pictures shown without gloves only for clarity.

Before starting your install, please be sure you have all parts required. List below.

PARTS LIST

(Check to make sure you have all parts and fiberglass parts before you begin your installation)

	2 Street or Track Uppers
	2 NPP Modular Elbows
	2 NPP Muffler Assemblies
	Lower X-Pipe Mounting Bracket (Main Exhaust Mount)
	8 V-Bands
	1 Center Bezel with Hardware Attached (2 8mm screws 2 washers 2 nylon nuts 2 mounting plates)
	2 Side Inserts (Attached 4 mounting plates 8 8mm screws 8 8mm nylon nuts 8 washers 4 mounting plates)
	1 X-Pipe
	1 Tip Rack with 4 Tips

TOOLS

	3/8" Drive Ratchet
	1/4" Ratchet
	8mm deep well socket
	10mm deep well socket
	13mm deep well socket
	15mm deep well socket
	T15 Torx
	3/8" drive extension 12" 3/8" drive extension 6"
	3/8" socket swivel
	13mm wrench
	10mm wrench
	11mm deep well

SHOP TOOLS

	Tin Snips (Used To Modify The Factory Grill)
	Die Grinder (Cut Factory Valence To Install Center Bezel)
	Spray Lubricant

Before you begin, please make sure you have all parts, tools and shop tools accounted for. If you find that you need additional tools, please contact a sales representative to help.

Note: After the installation of our LeMans Edition Exhaust system, the controllers for the AFM and NPP valves in the exhaust system should be re-calibrated according to GM Document ID 5406413. All C8's without NPP option will not need a re-calibration. If you need re-calibration, you can place an appointment with your local GM dealer for a check engine light.

LeMans Edition recommends taking your car to the nearest Chevrolet dealer to recalibrate your NPP factory modules.

LET'S BEGIN:

DISCONNECT THE BATTERY (After Trunk etc open)

(OPEN THE TRUNK AND DRIVER DOOR AJAR)

REAR BUMPER REMOVAL:

Lubricate all hangers, rubber isolators, bolts and nuts

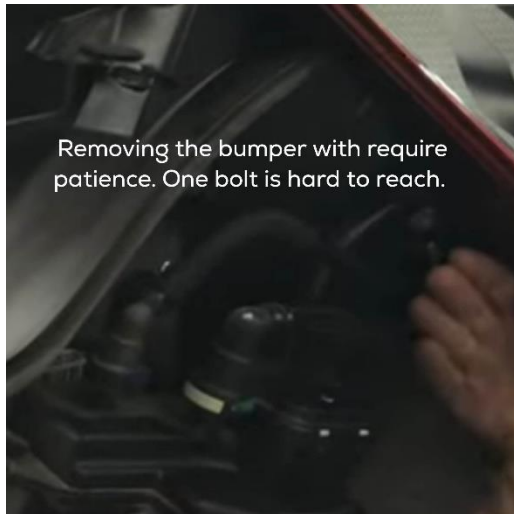
1. Remove the carpet and access panels to the trunk



2. Remove the rear wheels

3. Remove the rear splash guards

4. Remove the rear fender liners. NOTE: The entire fender liner does not need to come out: however is suggested. You will only need to peel away the rear portion of the liner to reach the access points behind the fender liner.

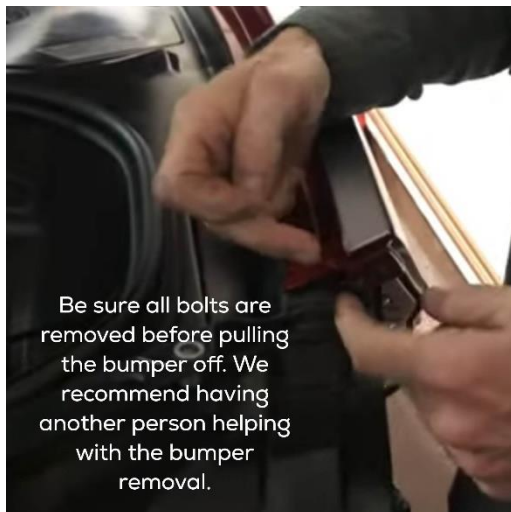


5. Loosen the hardware located behind the rear fender. You will be removing one 10mm nut and two 7mm fasteners.

6. Remove the factory lower diffuser panel. Exposing the factory muffler.



7. Remove the screws located at the top of the rear bumper cover.

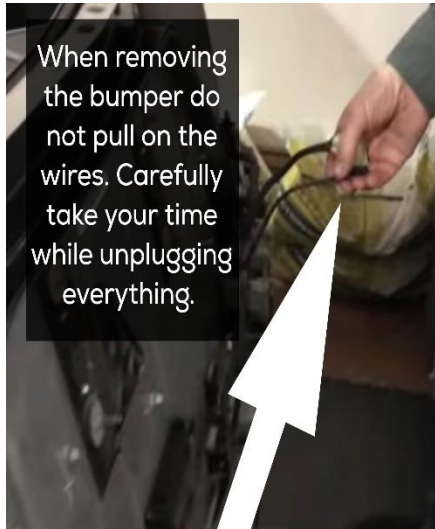


8. With 3 people you can now remove the rear bumper. We suggest two people lift the rear bumper cover and slowly move it away from the back of the vehicle while the third person disconnects (unplugs) the three electrical connectors located behind the bumper cover. (Taillight harness and camera harness)

***SEE PHOTO 1A**

9. Disconnect the electrical connector from the valve actuator. There will be 2 AFM valves in the front area and there will be 2 NPP valves in the rear area (If you have factory NPP option). ***SEE PHOTO 2A**

1A



2A



10. Remove the rear hanger bolts

11. Remove the bolts from the driver side and passenger side front flange to the catalytic converters.

12. Remove the hangers from the rubber isolators (Mounts)

13. Two people remove the stock exhaust. The exhaust will come out in one piece. Please take precaution as the stock exhaust is heavy. (89lbs)



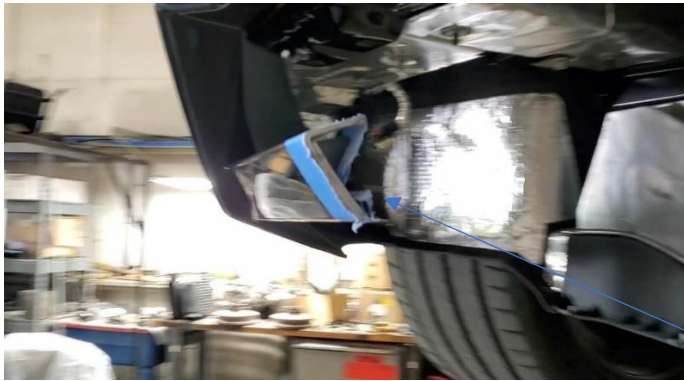
STOCK EXHAUST

14. Cut the lower valence using a die grinder. The cut should be approximately 9 inches out from the side of the factory valance towards the center. It is very important that the cut is done AFTER the second grill bung. So your grill will have the four mounting holes you will need to bolt it on.

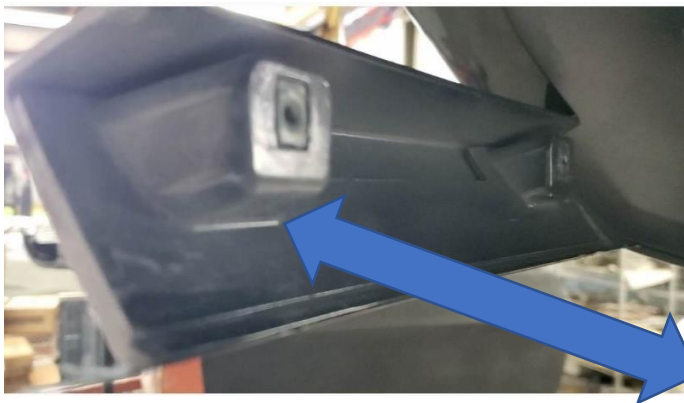


Aprox 9 inches towards the center





Be sure to cut AFTER the second bung.



the drivers side and passenger side.

Be sure to cut after the second bung on

15. (Step Drill) Drill corresponding clearance holes (1/2 inch size holes) for the mounting studs on the back of the bezel. Please note, these are clearance holes. You will want the holes to be 1/2" so you have room to adjust. **IMPORTANT:** Not doing this may cause the bezel to not adjust for fitment.



**NOTE:**

The side holes you drill into the valance are clearance holds. They should be 1/2 inch in diameter. This is to allow the center bezel's location to be dictated by the two upper mounting points.



16 A: Put the LeMans Center Bezel In Place to test the fitment and accomplish the next step.

16 B. Drill holes in the lower part of the factory valance that corresponds to the slots in the LeMans Edition Center Bezel .

17. (Die Grinder) Use a die grinder to cut out the four rivets that hold each heat shield in place where the factory tips use to be and remove them.





18. Trim Mesh grill to match the LeMans Edition center bezel. Be sure to not cut the mesh to short.





19. At this point plug in your AFM and NPP Simulator chips (Non NPP = 4 Chips) actuator plugs.



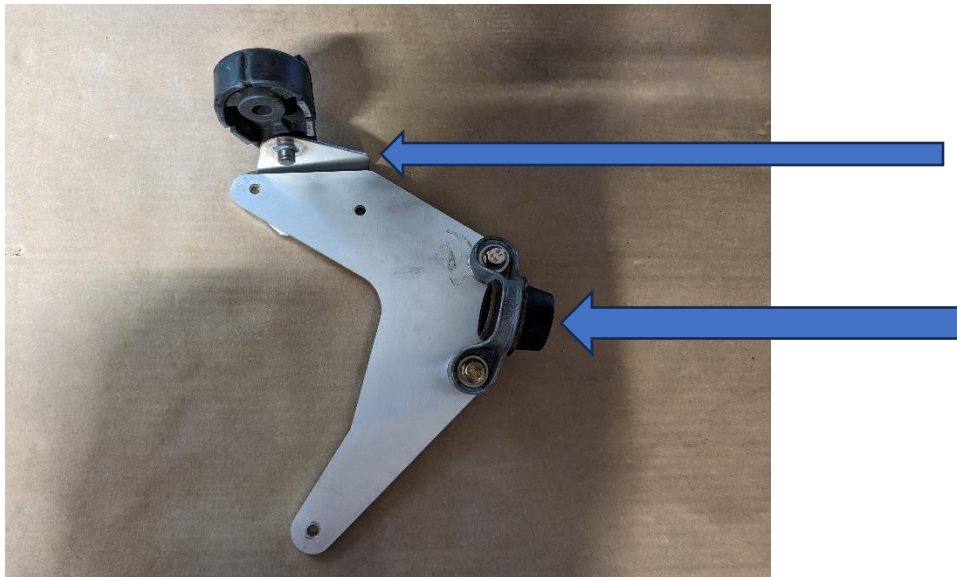
Insert chip



ZipTie the plugs out of the way

20. Install the LeMans Edition Track Or Street Uppers. **Leave the driver side loose for later adjustments needed. Leaving the system "loose" will allow better adjustment when centering the tips.**



**21. Main Exhaust Mount Included in Kit**

22. After removing the factory hanger and mounts from the vehicle, bolt the LeMans Edition Mount (shown above in #21) in place. Install the factory rubber mount. Be sure to put the provided spacers between the factory mount and the mounting plate. Be sure that the NPP mounting bracket ends up pinched between the mounting plate and the car (as shown). Only install the factory rubber mount on one side of the car so you are able to put the exhaust in place.



NPP INSTALLATION GUIDE



Bolt the uppers to the catalytic converters as shown above.

NPP SET UP



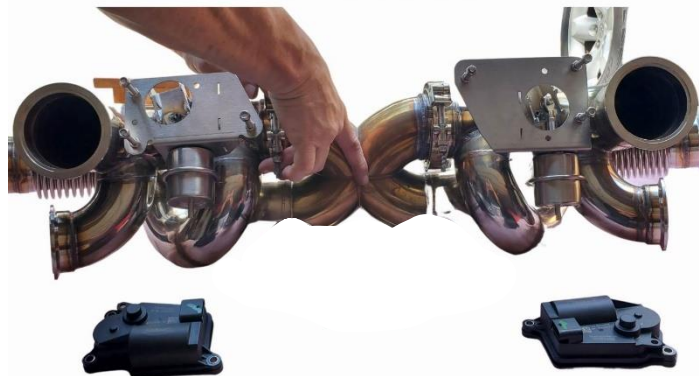
Step 1.

Let's get started!



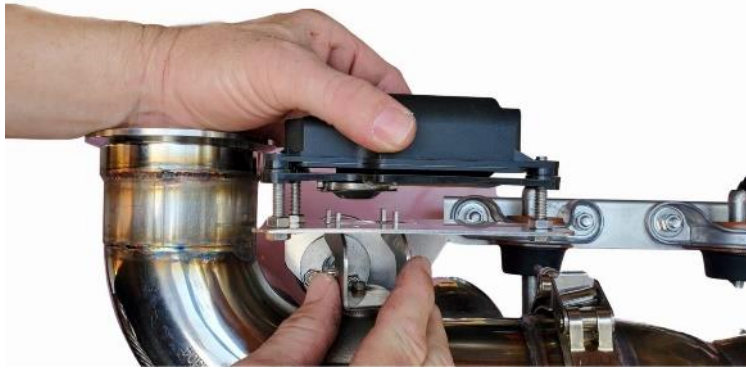
Step 2.

Assemble X-Pipe with the NPP Modules. Only SNUG the V-bands at this time. Make sure the V-band screws are towards the back of the X-pipe and facing down. This will give you access to them underneath.



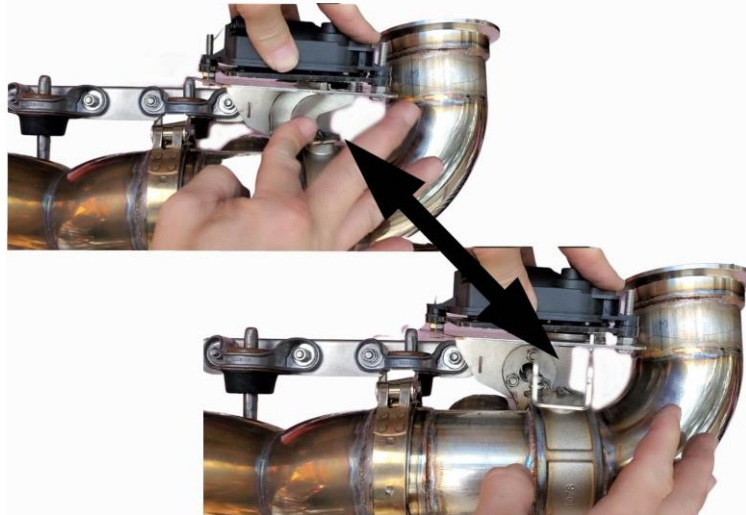
Step 3.

Install your factory NPP motors (off your factory exhaust). Make sure to correctly align the factory motors to the LeMans Edition coupling.



Step 4.

Once you have gently tightened the 3 mounting nuts, check to make sure the valve operates freely **WITHOUT binding.**



Step 5.

With the X-pipe and NPP assembly sitting on a flat surface, adjust the NPP modules until the bottom of the elbow measures 6 and 3/4 inches from the ground.



Step 6.

Now it is ready to install on the car.



Step 7.

Use the egg-shaped factory rubber mounts as shown. Hang them on the NPP mounts provided with the small side up.

NEXT

Bolt these where the factory aluminum mounts were previously located (as shown). Remember to install the V-Bands (as shown) in place before attempting to install the X-Pipe.



Step 7.1

We suggest **TWO** people for this step. Have one person lift the X-Pipe assembly into place. Next, have the second person attach the x-pipe to the uppers using the V-bands. Only **SNUG** the V-bands at this point. (Make sure your factory grills are **NOT** installed yet).



Step 8

Lift the assembled X-pipe and elbows into place while sliding the mounting pin into the factory rubber mount. Snug the V-bands between the uppers and the elbows.



Step 9

Install the factory rubber mount on the opposing side.



Step 10

Now adjust the tips.

Slightly snug the V-Bands.

You should have a gap of about two fingers between the outside tip and the bottom of the factory valence. Leave the V-Bands just snug since more adjustment may be needed once the bezel is in place.



Step 11.

**Now install your factory grills.
(Left and Right)**



Step 12.

Plug your NPP motors in using your extension harnesses.



Step 13.

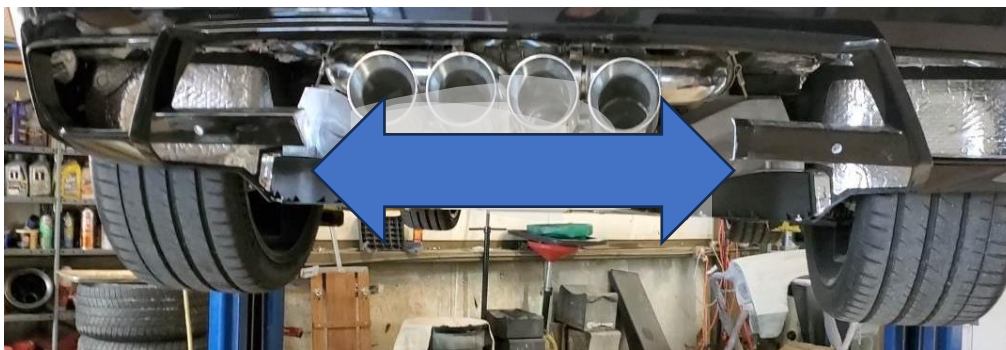
Hang the 2 and 1/2 inch V-bands in their places on the NPP module. Lift the NPP muffler assembly into place (as shown). Insert the mounting pin into the rubber hanger (you installed earlier). This will help support the weight. Now attach the flex joint side with the V-band. Just SNUG it. You will then attach the other side with the corresponding V-Band. Now you can tighten both V-Bands. (Repeat for other side of the car).



14. You should have a gap of about two fingers between the outside tip and the bottom of the factory valence. Leave the V-Bands just snug since more adjustment may be needed once the bezel is in place.



15. Install the LeMans Edition Center bezel starting with the upper slotted tabs.



16 A. (Drill the Upper Mounting Holes for the center bezel as stated in 16B if you have not already done so).

16 B. Install the nut plates with the screws and washers hanging down.

16 C. Put the LeMans Edition Center Bezel back in place.

16 D. ADJUST AS NEEDED. Start by tightening the upper LeMans Edition bezel mounts to the factory valence. With the ½” holes, you should have plenty of adjustment to align the side ends of the bezel.



17. Once you are happy with the location of your LeMans Edition center bezel, go ahead and snug the outside studs. (Do not snug the studs until you are satisfied with the bezel location and fitment). Be sure to go back and forth with the studs to keep the LeMans Edition Bezel in its correct place. Now adjust the tips as needed.

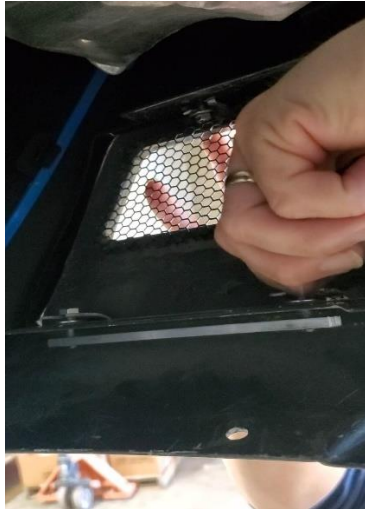




18. (10 mm flat wrench) Install the LeMans Edition Side Inserts. Install side insert mounting plates first. (Pic above and below are shown on a non-NPP vehicle. Please note, the steps are the same).



Side insert mounting plates



Slide insert into place, line up

and tighten the bolts. (Both Sides)



- 19. Go back and tighten all V-Band clamps**
- 20. Remount and torque wheels to factory specs**
- 21. Re-install all mounting hardware for wheel flaps and inner-fenders**
- 22. Re-assemble trunk**
- 23. Make sure the vehicle is ready to start up. Check all plugs before re-connecting the battery**
- 24. Start the car and listen for any exhaust leaks. If you discover an exhaust leak, go back and loosen and re-tighten your V-Band clamps accordingly.**



Any questions before, during or after installation please contact a sales representative any time at sales@lemansedition.com or call during business hours at 727-519-8093