

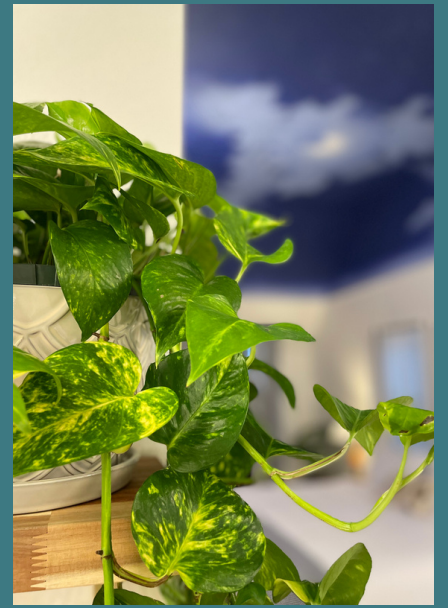
LUXURY LODGING & EVENT SPACE

MINUTES FROM DOWNTOWN DENVER
IN A SETTING THAT TRANSPORTS YOU





We host your
Special Occasions
Group Getaways
Private Events



Features

Our team has decades of events & hospitality experience !

- Located minutes from Downtown Denver and within walking distance to parks, restaurants & activities.
- Seven luxury rooms including 4 King Suites + 3 Queen rooms, welcoming up to 23 guests for overnight lodging.
- Welcoming Fireplace Lounge / Living Room area
- Complementary 'European Continental' breakfast daily
- Locally roasted coffee & well appointed tea station
- Private Garden with organic flowers, herbs & vegetables
- Preferred Catering and Vendor Lists
- In-house Wedding Officiant
- Full Liquor License
 - Curated wine list available by the bottle
 - Retail pricing for delivered orders with Full House Reservations
- Sommelier services available
- Spacious Outdoor Areas with private Fire Pit & Hot Tub
- Strong WiFi coverage throughout the property
- Concierge Services & preferred Vendor recommendations
- Private, off-street parking for up to 5 vehicles
- Bicycles & picnic blankets available to borrow (we can pack the picnic)
- A Sustainable Stay (we are a Certifiably Green Denver business!)
- An inclusive, safe space for all (just be a nice person)
- Complimentary General Admission to the Denver Botanic Gardens

The Hotel

Built in 1892 as a grand private residence, the Victorian Mansion has now been converted into a "Modern Victorian B&B" and event space.

Our seven luxury rooms are designed as a refreshing retreat for all who visit. This urban oasis is wrapped in historic charm, filled with delightful details and updated modern conveniences, minutes from downtown Denver.



What we offer

Flora House is available for your exclusive enjoyment, with luxury lodging and perfectly customized events. The space is perfect for celebrations and intimate gatherings for 20-75 guests. Our services include concierge, event coordination, full liquor license with complementary Sommelier consultation and a list of preferred vendors for catering, live music/dj or any other assistance to help create the event you've imagined.



Fireplace Lounge



SIZE

488 SQ FT

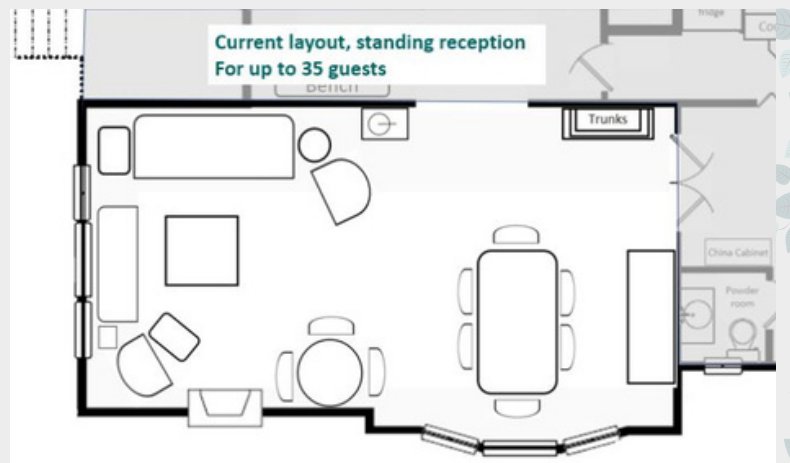
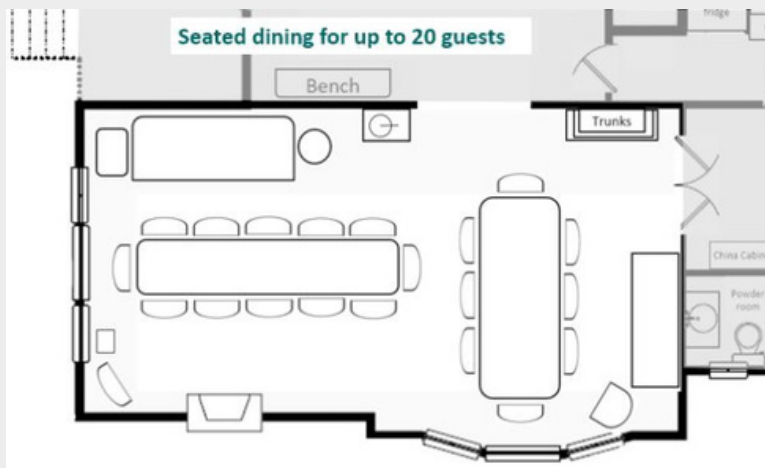
CAPACITY

35 STANDING RECEPTION

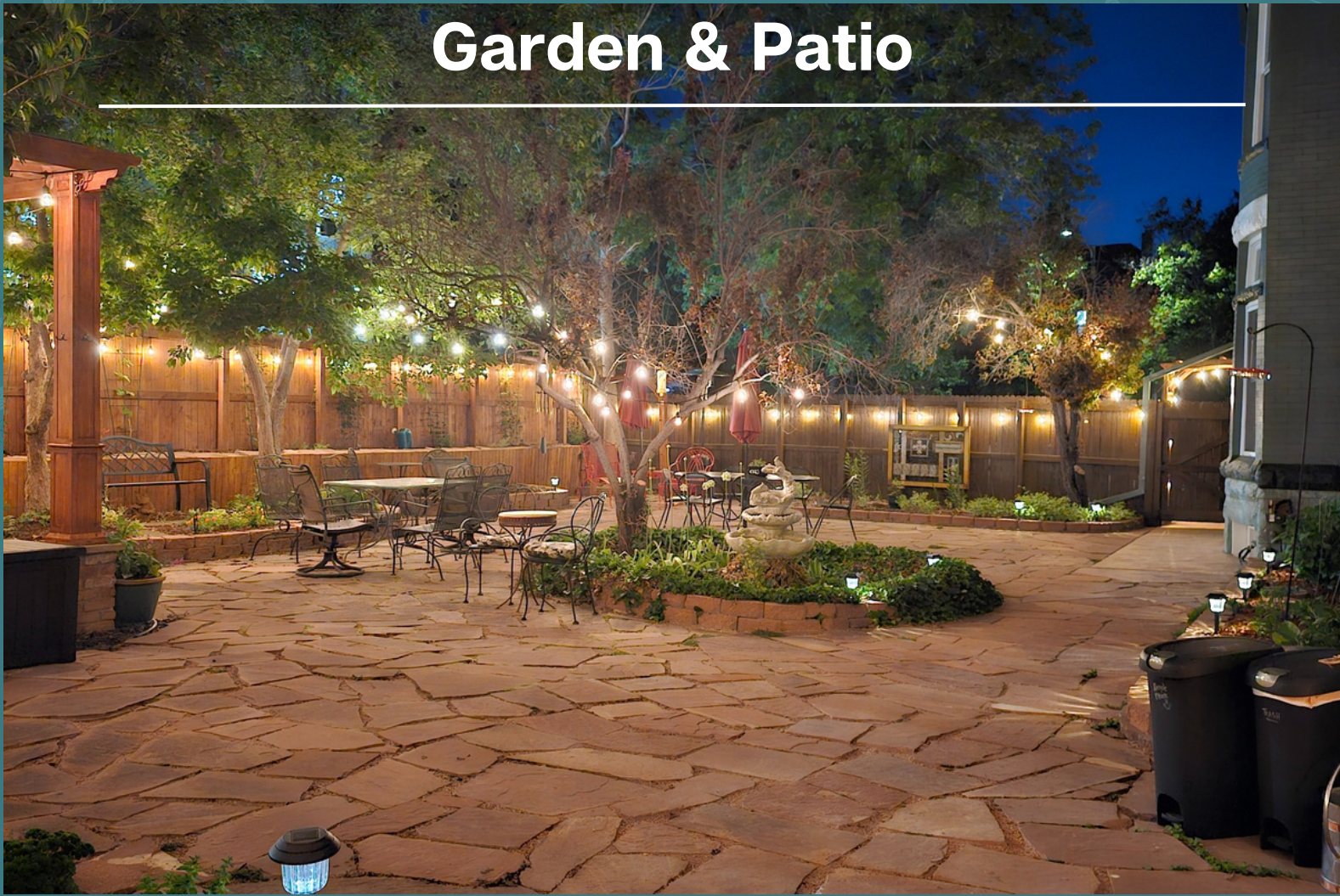
20 SEATED DINING

FEATURES

EVENT HOURS: 11AM - 9PM
WIFI / HIGH SPEED CONNECTIONS
AIR CONDITIONED
GAS FIREPLACE, ORIGINAL MANTLE
COMFORTABLE LOUNGE AREA
BRIGHT NATURAL LIGHT
10FT CEILINGS
CHARMING AMBIANCE



Garden & Patio



SIZE

3,695 SQ FT

CAPACITY

75 STANDING RECEPTION

60 SEATED CEREMONY

50 SEATED DINING

FEATURES

EVENT HOURS: 9AM - 11PM

SPACIOUS SUN & SHADE AREAS

OVERHEAD AMBIENT LIGHTING

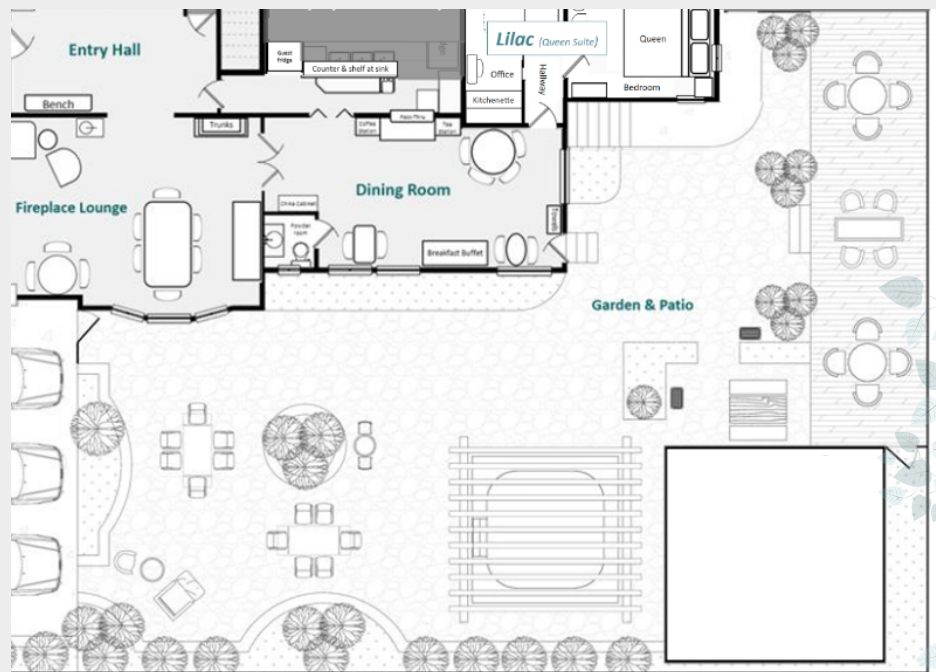
BIRDBATH FOUNTAIN

GAS FIREPIT & HEATERS

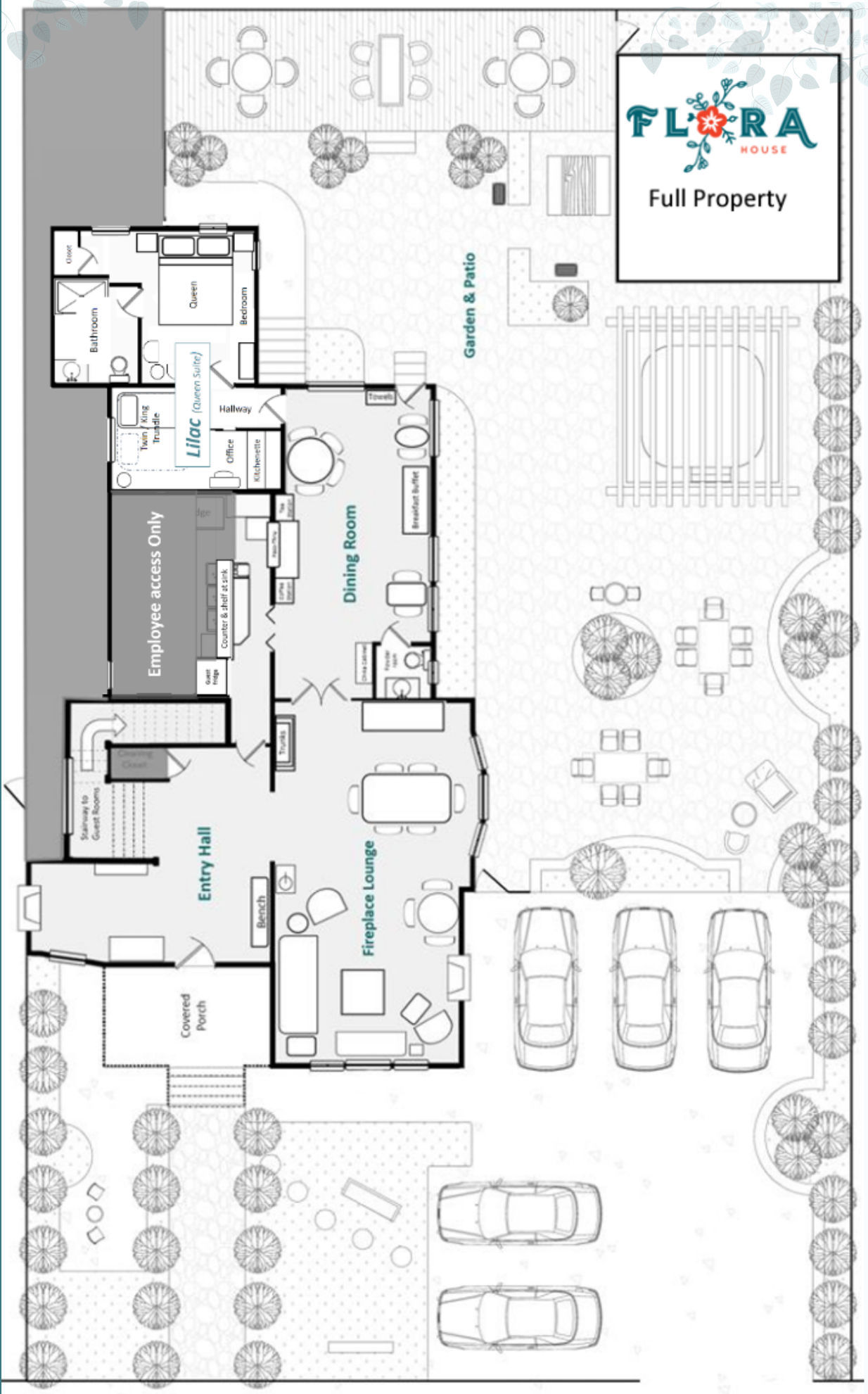
STRONG WIFI COVERAGE

LEAFY, PRIVATE GARDEN

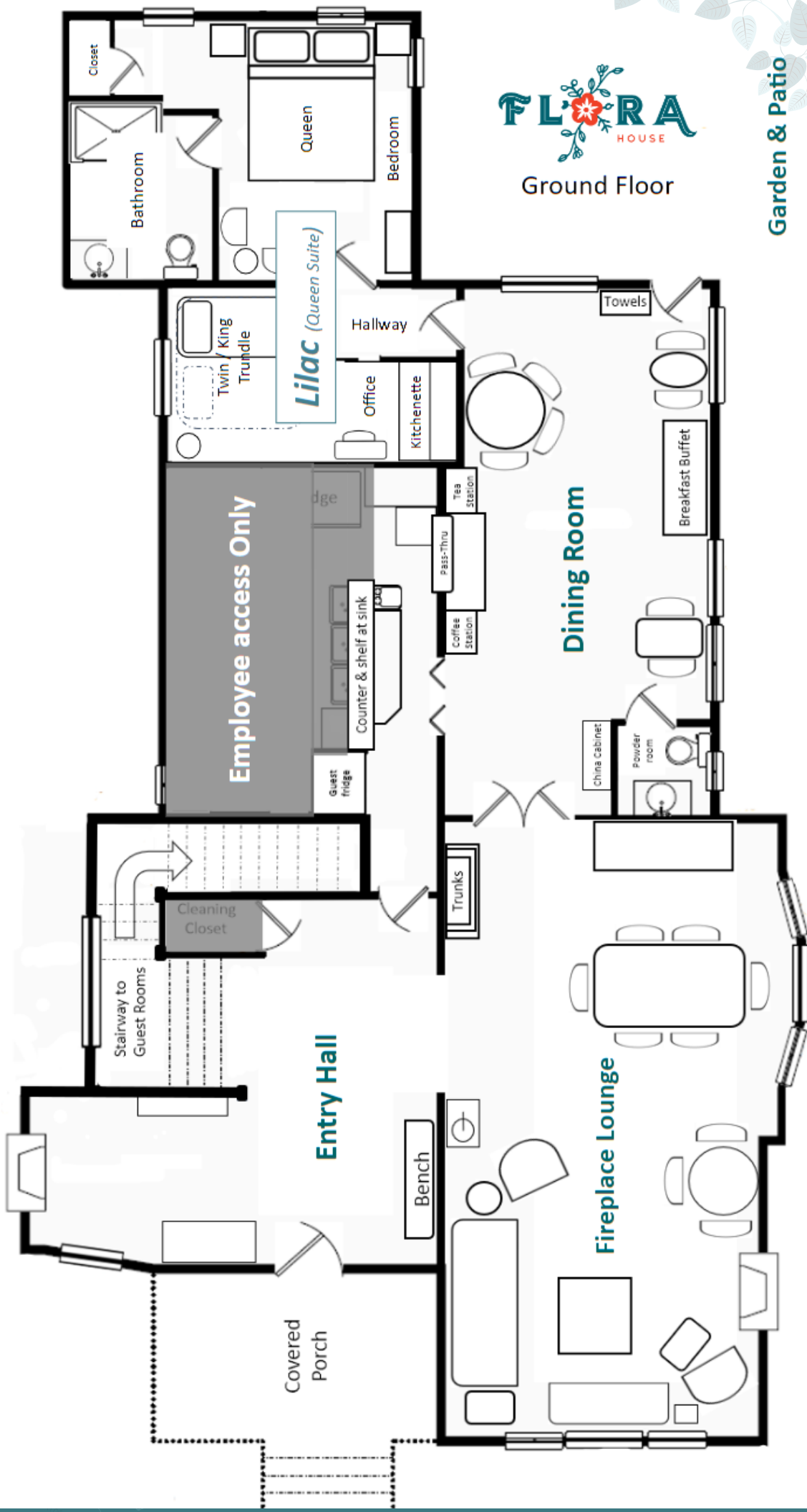
YOUR URBAN OASIS



Property Layout



Property Layout



Ground Floor

Garden & Patio

Property Layout



Third Floor



Stairway to Second Floor

Landing

Closet

Closet

King

Twin

Queen
Murphy
Bed

Iris Suite

Kitchenette

3rd Floor Landing

Hyacinth

Queen

Guest Cabinet

Armoire

Kitchenette

Stargazer
Suite

King

The background of the image is a collage of ornate, cream-colored garden labels with intricate scrollwork borders. The labels are set against a backdrop of lush green foliage. The labels are arranged in a grid-like pattern, with some overlapping. The text on the labels is in a classic, serif font. The labels visible include 'ORCHID', 'SILVER FERN', 'STARGAZE', 'ZINNIA', and 'IRIS'. There is also a partially visible label on the left that says 'FLU...'.

ORCHID

Contact us for
More Information:

720-531-2169

Hello@FloraHouseDenver.com

FloraHouseDenver.com/Events