

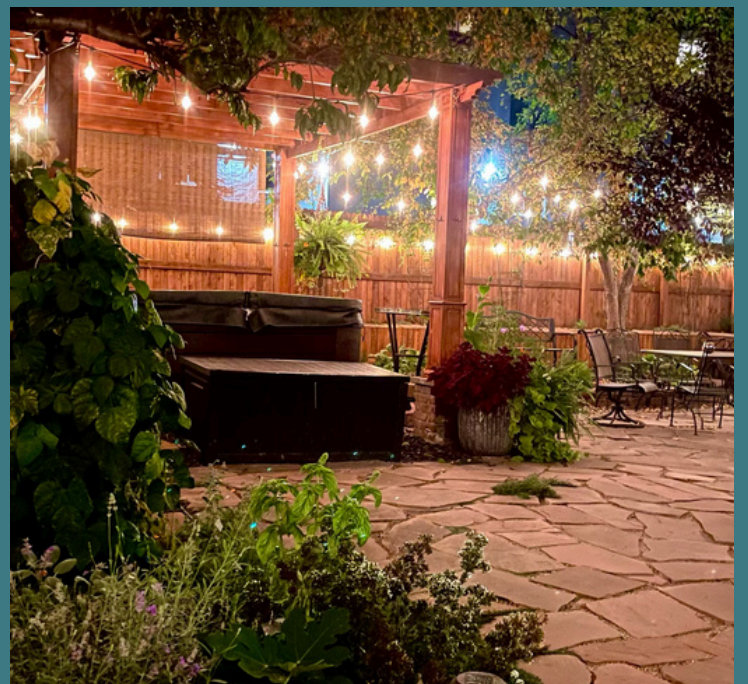
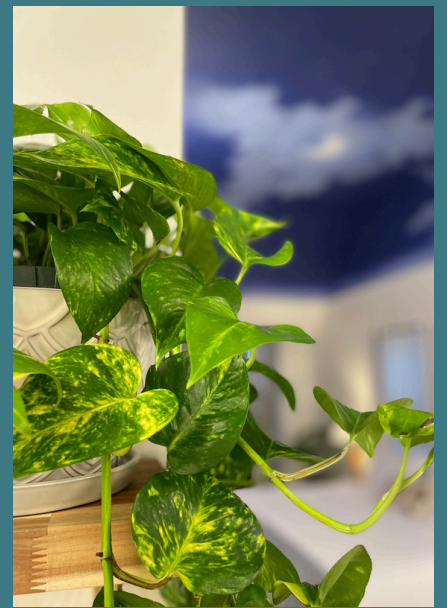
LUXURY LODGING

MINUTES FROM DOWNTOWN DENVER
IN A SETTING THAT TRANSPORTS YOU





We host your
Special Occasions
Group Getaways
Friends & Family



Features

- Wonderful location just minutes from Downtown Denver.
- Your own Victorian Mansion with SEVEN luxury rooms (4 King Suites + 3 Queen rooms (all rooms have suite bathrooms)).
- Accommodations for up to **23 overnight guests!**
- Kitchenettes in 5 rooms + access to a full sized Guest Fridge.
- Complementary 'European Continental' breakfast prepared fresh daily.
- Coffee, Tea & Snacks available anytime.
- Curated Wine & Beer List available by the Bottle.
- Full Liquor License with Sommelier Services available.
- Welcoming Indoor & Outdoor Common Areas with games.
- A Large Secret Garden as your Urban Oasis featuring sun & shade areas.
- Private Fire Pit, Hot Tub & Space Heaters for gorgeous Denver nights.
- Strong WiFi coverage throughout the property.
- Off-street Parking for up to 5 vehicles.
- Bicycles & Picnic blankets available to borrow with advance notice.
- Private EVENTS are permitted with Venue Agreement (ask for more info).
- Concierge Services & preferred Vendor recommendations.
- A **Sustainability** Mindset (part of the Colorado Green Business Network).
- An inclusive, safe space for all (just be a nice person)

The B&B

Built in 1892 as a grand private residence, this Victorian Mansion has been converted into a "Modern Bed & Breakfast" with beautiful Event Spaces. Our seven luxury rooms are each designed as a refreshing retreat for all who visit. Steeped in historic charm and filled with delightful details, tasteful updates & modern conveniences, Flora House is in a class of its own.



What we offer

A Mansion & Garden all to yourselves, offering luxury lodging and customizable experiences. A perfect space for gathering with Friends & Family, hosting Workshops, unforgettable Off-Site Meetings and Retreats of all kinds. Our team is always available but never intrusive; ready to help create the stay you're imagining.



Fireplace Lounge



SIZE

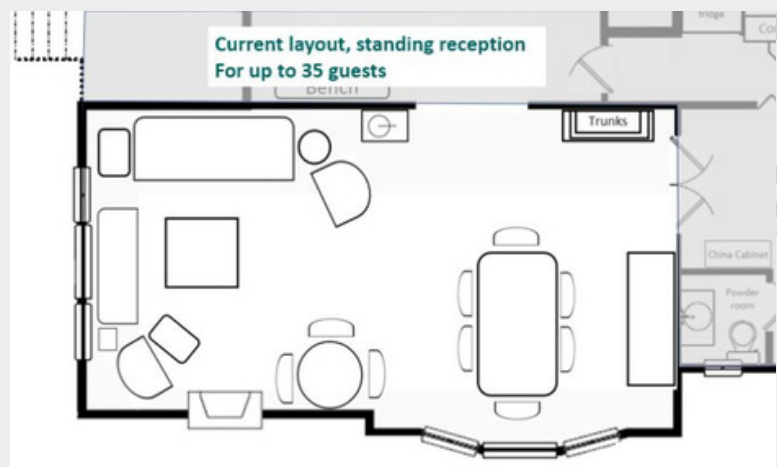
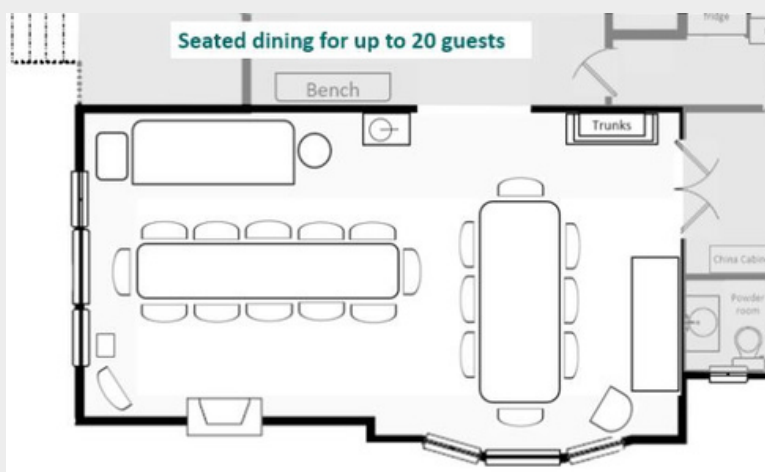
488 SQ FT

CAPACITY

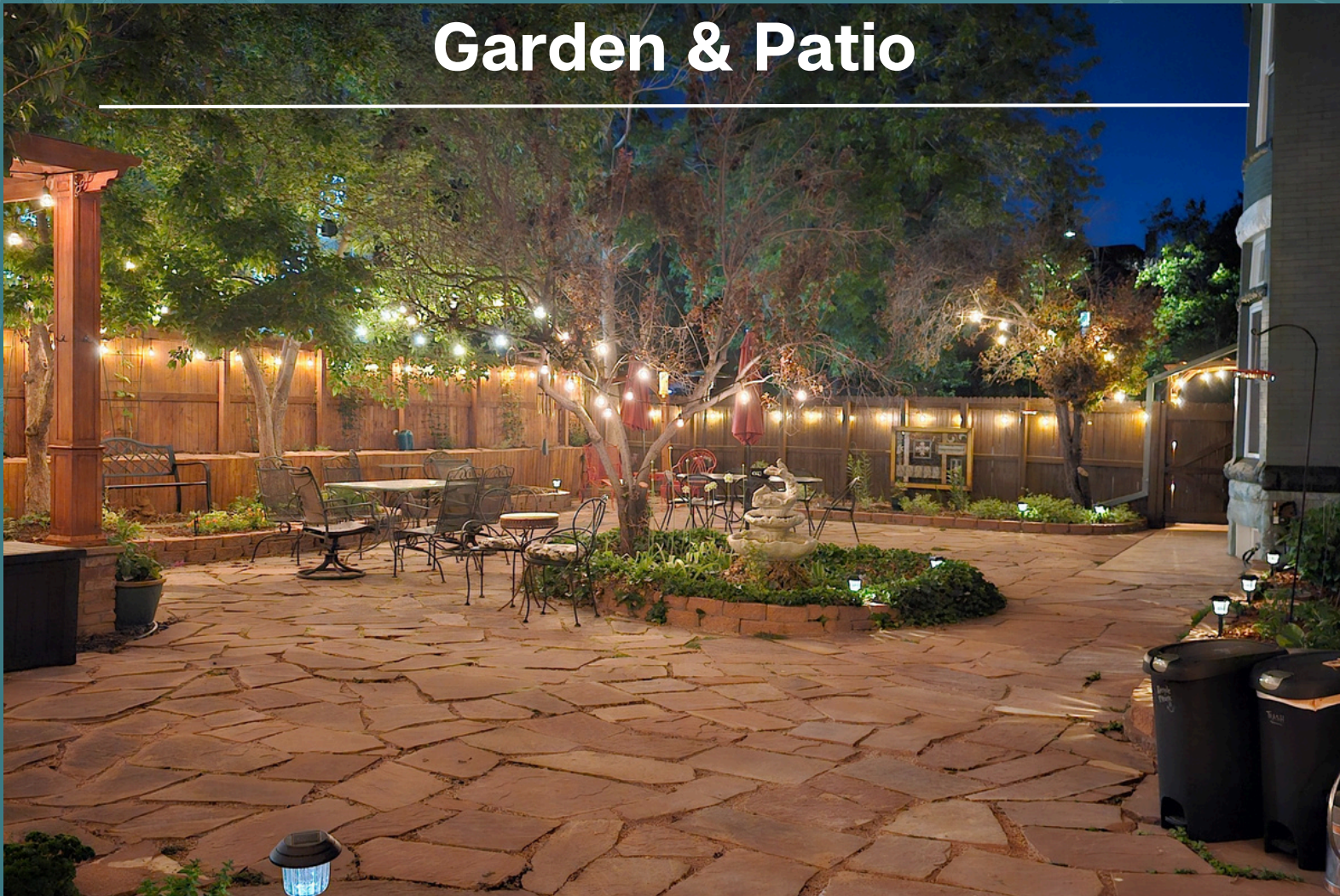
35 STANDING RECEPTION
20 SEATED DINING

FEATURES

EVENT HOURS: 11AM - 9PM
WIFI / HIGH SPEED CONNECTIONS
AIR CONDITIONED
GAS FIREPLACE, ORIGINAL MANTLE
COMFORTABLE LOUNGE AREA
BRIGHT NATURAL LIGHT
10FT CEILINGS
CHARMING AMBIANCE



Garden & Patio



SIZE

3,695 SQ FT

CAPACITY

75 STANDING RECEPTION

60 SEATED CEREMONY

50 SEATED DINING

FEATURES

EVENT HOURS: 9AM - 11PM

SPACIOUS SUN & SHADE AREAS

OVERHEAD AMBIENT LIGHTING

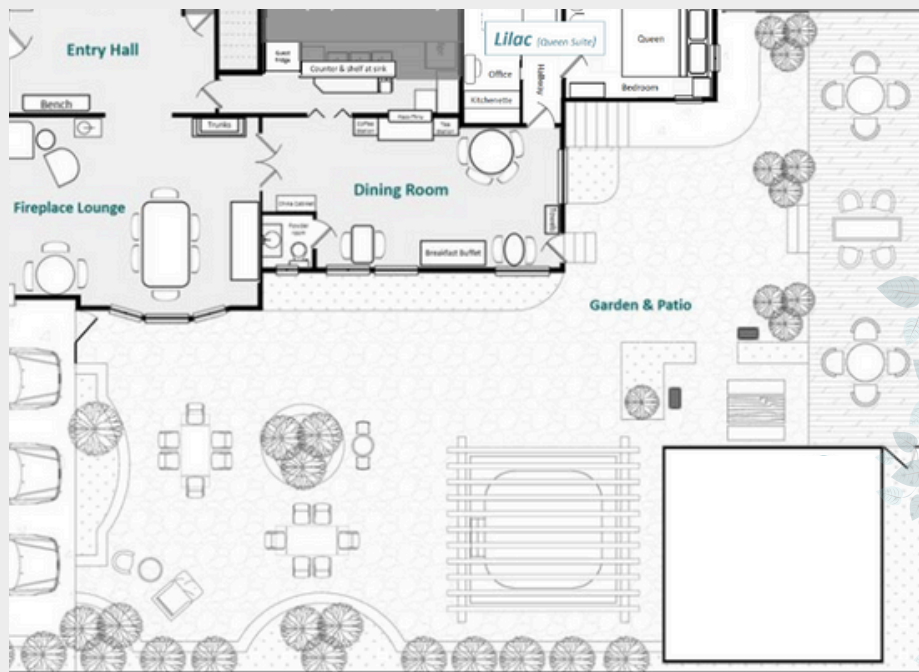
BIRDBATH FOUNTAIN

GAS FIREPIT & HEATERS

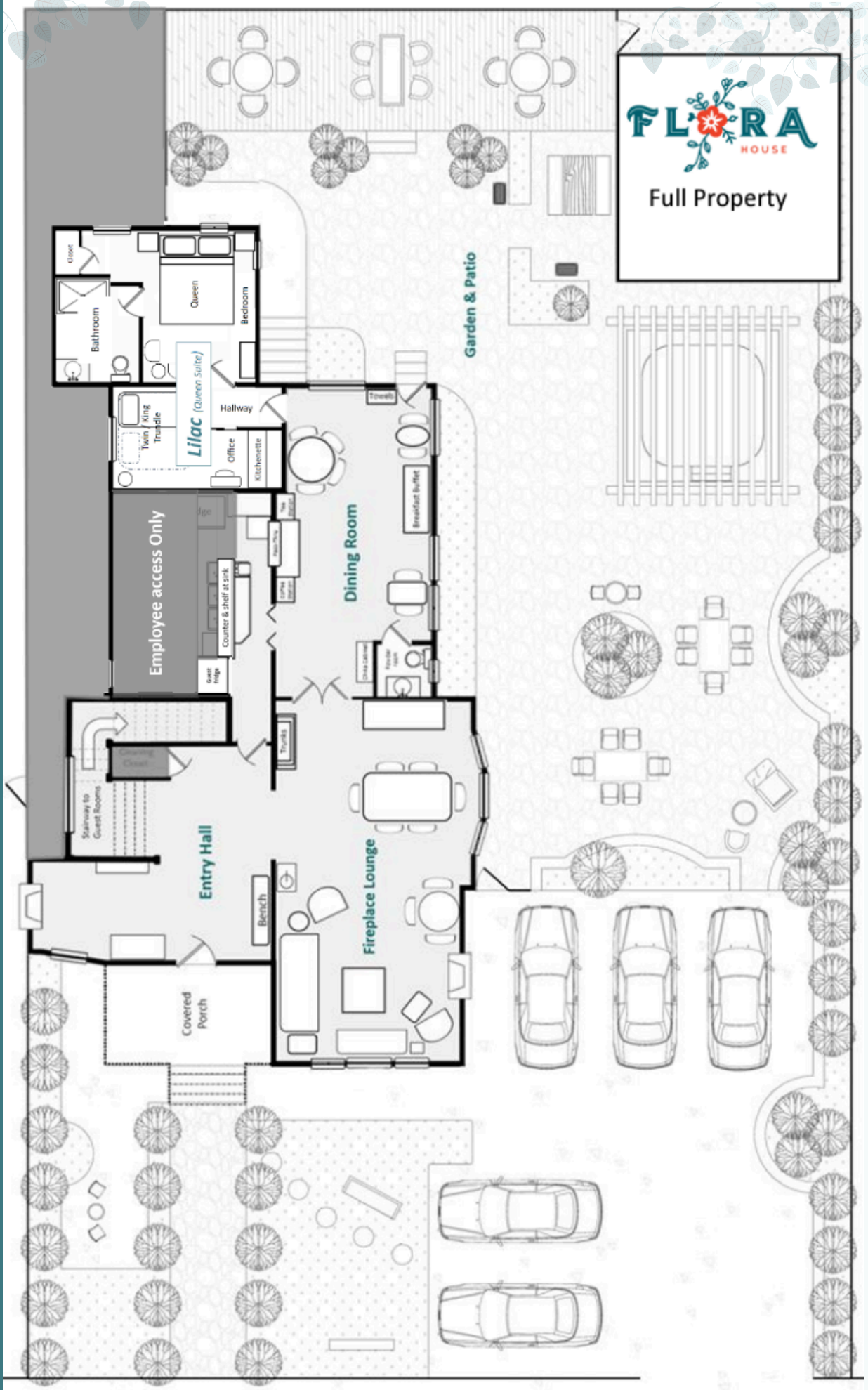
STRONG WIFI COVERAGE

LEAFY, PRIVATE GARDEN

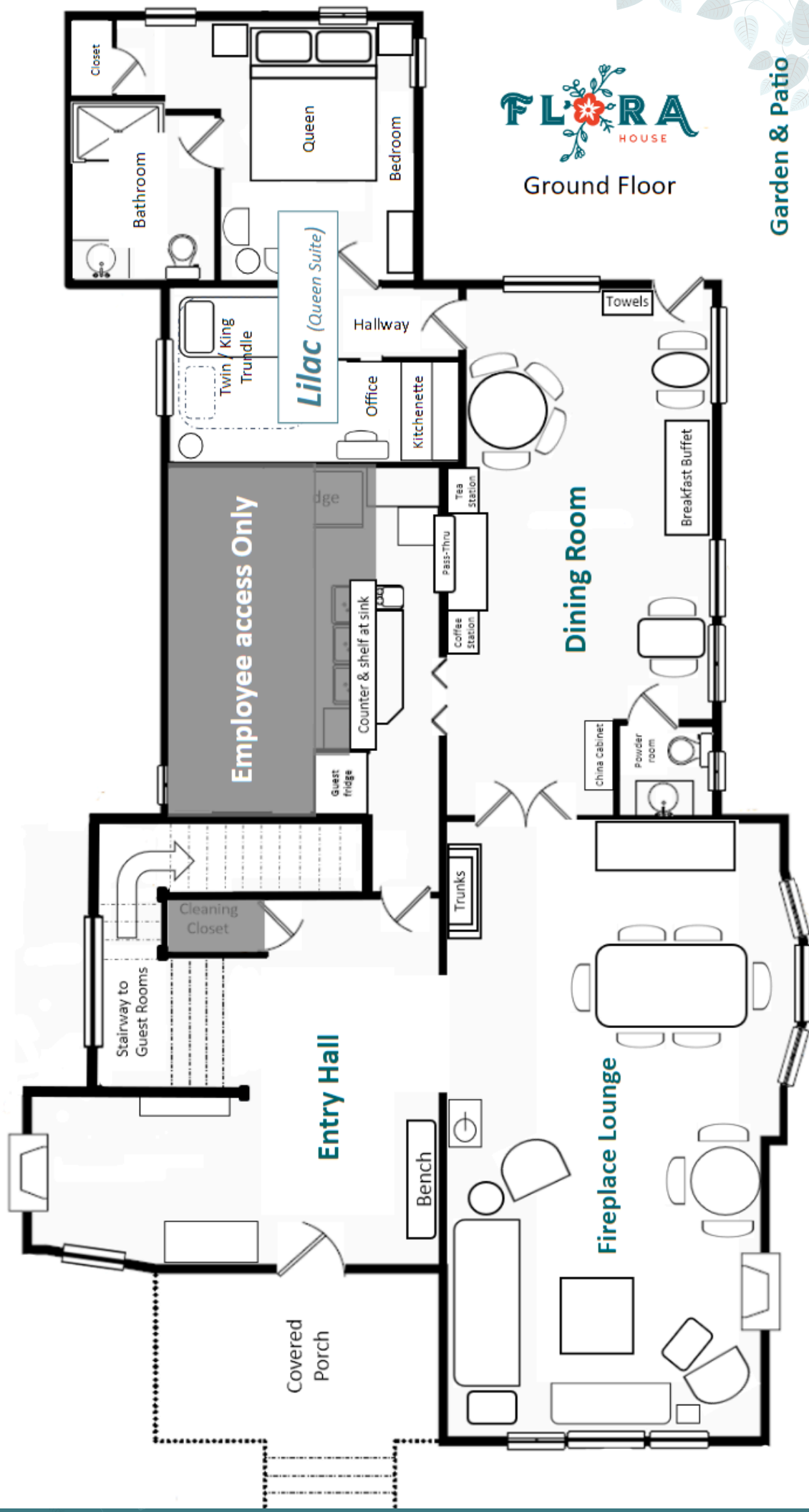
YOUR URBAN OASIS



Property Layout



Property Layout

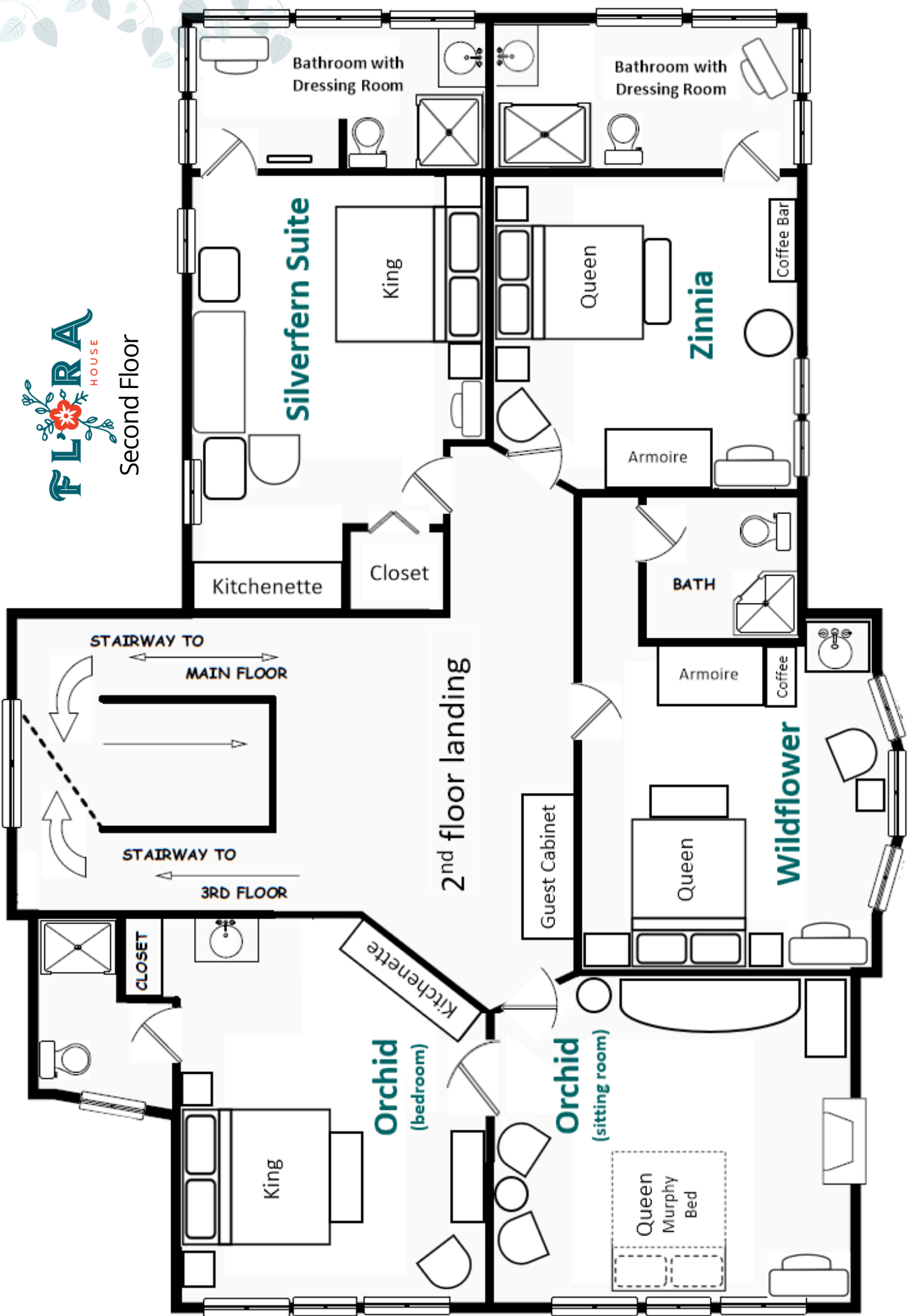


Garden & Patio

Property Layout



Second Floor



Property Layout



Third Floor





Contact for more information

Hello@FloraHouseDenver.com

FloraHouseDenver.com/Events



@FloraHouseDenver

720-531-2169

1430 Race St, Denver 80206

LET'S CREATE SOMETHING AMAZING