



*Welcome to
Camp Loon!*

www.camploon.com



Welcome to Camp Loon!

Whether you have visited Camp Loon before or this is your first time with us...whether you have been to the Adirondacks before or if this is a new adventure... we hope you make new memories, find time to relax, connect with nature, and share special moments with your family and friends!

Our intention, in sharing our camp with you, is to provide an unforgettable, restful, private, comfortable place to gather!

We hope the enclosed information will help you plan and enjoy your stay!!

Your Hosts...The Lathans...Jeff, Gina, Josh, Adrianna & Jonathan

Camp Landline Phone Number: 315-357-6106
(calls within continental US, from the landline are free!)

Camp Loon Address: 179 Sixth Lake Road, Inlet NY (boat access only...no road)

**Address for GPS/Camp Parking/Boat Access:
313 State Route 28, Inlet NY**

Check In Time: 4:00pm
Check Out Time: 11:00am



**The week before your stay, we will send you a code for the key lockbox.
The lockbox is located at the front porch door.
Please return the house key to this lockbox prior to your departure.
Please leave boat keys IN the boats.**

**Should you need anything at all before, during or after your stay,
please contact Jeff or Gina anytime!**

Gina's Cell: 585-409-8009

Jeff's Cell: 585-831-0885



CAMP LOON HOW TO FIND US....

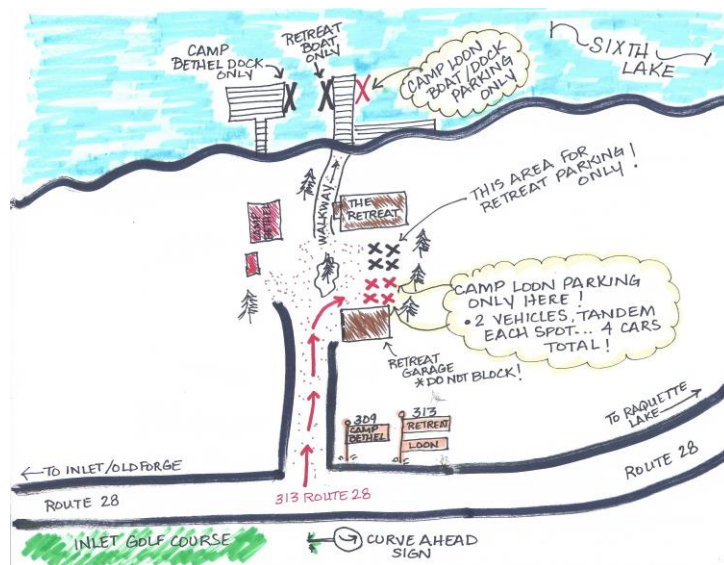
Camp Loon is a boat access camp. Vehicle Parking and Boat Dock (at Parking) is actually located at "The Retreat" camp, located at 313 Route 28, Inlet, NY. See map below for additional reference.

Directions to "The Retreat" (parking for Camp Loon): Take Route 28 North, through the village of Inlet. 313 Route 28 driveway is located just after the Inlet Golf Course, across from the "curve ahead sign" on the opposite side of the road from the golf course. There are camp signs at the driveway that read "Sixth Lake Retreat", "Camp Loon" and another "Camp Bethel". Follow the drive down toward the lake.

Parking: We provide parking for up to (4) cars, in two spots. Cars MUST park tandem next to the large garage of "The Retreat", in front of the signs that say "Camp Loon Parking Only". Please do NOT park in the spots closest to "The Retreat" camp! Do NOT block garage or driveway.

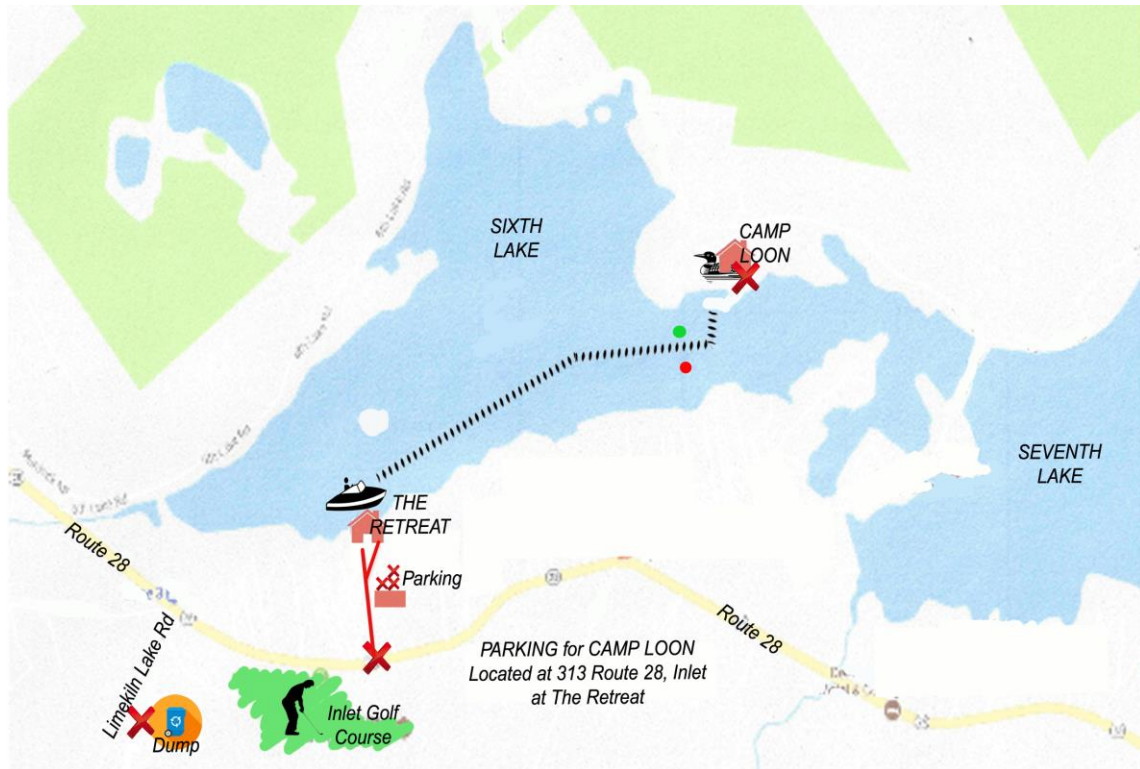
Lake Access/Boat: Take the walkway between "The Retreat" and the red cottage down to Sixth Lake, and the dock. Camp Loon rental includes the use of the **GRAY & TEAL SYLVAN** Pontoon boat (parked for you at the dock). There are carts located near the garage at "The Retreat" and near the dock at "Camp Loon". These are for your convenience and hauling your supplies. Please return them to where you found them after each use. **Do NOT take tote from Parking over to Camp Loon please.**

Dock Use: Please be courteous of guests of "The Retreat", as well as our friendly neighbors, The Barbers, in the red cottage. "The Retreat" dock is for docking, loading and unloading ONLY.





Directions to Camp Loon (5 minutes) Across The Lake: As you pull away from "The Retreat" head east on Sixth Lake. Camp Loon is located on the north side of the lake just as you enter the channel, just after you drive between the Red & Green Channel Markers. Look for our covered Boat Dock, "Camp Loon" sign and American Flag. If you approach the bridge, you have gone too far!
SEE MAP BELOW.....



PARK BOAT HERE ONLY!

- Please approach the docks **SLOWLY** and with care!
- When parking boat at "The Retreat" you must park on left hand side of dock (as you approach the dock).
- When parking boat at Camp Loon you must park on the left hand side of the dock/boat house (as you approach the dock/boat house). **NEVER DOCK AT THE SITTING AREA DECK at CAMP LOON!!! OUR UTILITIES ARE LOCATED JUST TO THE RIGHT OF THIS DECK (where the Adirondack chairs are)!!!!**
- Please be cautious of guests at "The Retreat" that may be in the water.



WHAT TO BRING

**Camp Loon is well appointed, for your convenience,
with every day essentials such as:**

*Comforters, Extra Blankets & Pillows
Dishes, Mugs, Glasses & Wine Glasses
Silverware & Cooking Utensils
Pots & Pans*

*Toaster, Microwave, Keurig AND Regular Coffee Pot, Full Oven
Gas Grill (tank provided...guests responsible for filling if needed)
Washer & Dryer (for small loads only)
Board Games & Cards
Ceiling Fans (Portable fans are NOT allowed)*

Please bring with you:

*Sheets (see below for bed sizes)
Personal Pillows
Bath, Hand & Beach Towels AND Dish Towels
Personal Toiletries
Drinking Water
Campfire Wood (must be purchased within the Adirondack Park)*

**Some of the following items MAY be at the camp when you arrive,
thanks to the kindness of previous guests, however you are responsible to bring
what you need/replace what you use:**

*CLEAR Garbage Bags (Recycling is Mandatory!)
Toilet Paper
Paper Towels
Kleenex
Dish Soap
Laundry Soap*

Beds:

- *#1 Master Bedroom (upstairs): Queen*
- *#2 Bedroom (upstairs): Queen*
- *#3 Bedroom (upstairs): (2) Twins*
- *#4 Bedroom (downstairs): Queen*
- *#5 Bedroom (downstairs): (2) Twins*



WELCOME TO INLET....Everything you need, and more!

The Adirondack Park offer endless adventures, sights and places to visit...From Thendara to Old Forge to Blue Mountain to Long Lake...and beyond!

But...you don't have to go far from Camp Loon for just about anything you need...

Our quaint, little town of Inlet offers small-town goodness and hospitality!
Be sure to check the newspaper for special events at the Inlet Park,
on Main Street or at local businesses during your stay!

We encourage you to walk around and enjoy the laid back, charming town of Inlet!

- **Welcome Center**
- **Public Park/Beach/Swimming**
- **Grocery Store**
- **Gas Station**
- **Church**
- **Post Office**
- **Library**
- **Wine Store**
- **Coffee Shop**
- **Donut Shop**
- **Cycle Shop**
- **Golf Course**
- **Book Store**
- **Hardware Store (and more!)**
- **Mountain & Main...look for woodworking items by our friend "Rickard's Woodworks"!**
- **Ice Cream Stand,,,Northern Lights**
- **Pizza...Scream'in Eagle**
- **Bar...Matt's Draft House (back end of Scream'in Eagle) or The Tavern (Eagle Bay)**
- **Diner...The Tamarack Café**
- **NEW....The Caboose Panni Café!**
- **Fine Dining...The Woods Inn or Seventh Lake House**
- **Our Favorite...The Taboggan ! Tell them The Lathans from Camp Loon sent you!!**



GARBAGE & MANDATORY RECYCLING

**The Adirondack Park requires mandatory recycling and trash separation.
Trash is separated into five categories....**

1. **Plastic** (milk jugs, water bottles, pop liters, etc....CLEANED OUT)
 2. **Metal** (pop cans, food cans, etc...CLEANED OUT)
 3. **Glass** (beer bottles, food jars, etc...CLEANED OUT)
 4. **Cardboard** (only corrugated cardboard is recyclable....other can be saved and used to start campfires or thrown in garbage)
 5. **Garbage** (food scraps, non-corrugated cardboard, kleenex, diapers, can and bottle tops, etc).
- ALL RECYCLEABLES AND GARBAGE must be placed in CLEAR garbage bags!
 - These must be dropped off (in clear plastic bags) at the town dump located on Limekiln Road off Route 28 (the road starts at the fire house). When you make the turn from Route 28 onto Limekiln Road, the dump will be about a mile down on the left hand side before The Olde Barn Restaurant.
 - If questioned, say you're from Camp Loon on Sixth Lake.
 - The Inlet dump is open every day. It is closed for lunch from 12:00 to 1:00 daily.
 - All garbage and recyclables must be removed from camp, and taken to the dump prior to your checkout. **No garbage shall be left at the camp or on the grounds or an additional fee of \$250 will be charged to the tenant(s).**

**NEVER LEAVE GARBAGE OUTSIDE THE HOUSE or ON SCREENED-IN PORCH or
IN YOUR PARKED VEHICLES!**

IT WILL ATTRACT BEARS AND/OR OTHER WILDLIFE!!



BOAT OPERATION

Camp Loon rental includes the use of

- 24' Pontoon Boat (SYLVAN/GRAY & TEAL)...***always leave keys in boat and ALWAYS cover seats at night, ALWAYS upon departure and during day if chance of rain!!!!***
- Paddle Boat and (2) Canoes

**It is required that you obey all New York State boating laws.
All motor boat operators of our boats must be 21 or older.**

- **IMPORTANT....You are ONLY allowed to operate the pontoon boat in 6th and 7th Lakes! Do NOT attempt to go into 8th Lake!! (It is too shallow)!**
- **You are ONLY allowed in MAIN areas of lakes!!! Do NOT boat in any of the smaller cove areas!!!! They are shallow with many stumps and rocks!!!**
- **Please stay inside channel and watch for buoys and other markers!! There are many stumps and rocks marked in both lakes!!!**
- **Do NOT drive boat in area around Paynes Airplane Service (on 7th Lake)...there are unmarked rocks that WILL damage the boat!! Stay out of "airplane" area for this reason!!!! If you take plane rides you must drive there by car!**
- Any person 12 years old and under must wear a life jacket when any watercraft or boat is in operation.
- You are required to have life jackets for all people on board when using the boats as well as one floatation device cushion. Our boat has a supply and a variety of adult life jackets. It is your responsibility to ensure the correct size life jackets are on board watercraft, and are being worn. Children's size life jackets are not provided.
- **You are responsible for not overloading any boats/ canoes.**
- The intentions of the boat included with your rental is for transportation to and from camp, as well as leisurely boat rides on 6th & 7th Lakes. **Our boat is not meant for waterskiing, tubing, racing or water sports. Any reports of such use will result in forfeit of entire security deposit!**
- All persons must stay within the corral of the pontoon boat when it is in motion.
- **No Smoking at any time on watercraft!**
- The sheriff's department does patrol the lakes, and may issue tickets for boating violations...life jackets, speed, horseplay. The speed limit in the channel is 5mph!
- Please, **you must slow down to a crawl**, when approaching the docks. Boats don't stop or turn like cars. Boat or dock damage repair will be the responsibility the renters/ tenants.



BOAT GAS INSTRUCTIONS & POLICY

- Upon check in, we ask that you check the gas tank on the boat to ensure it has been re-filled by the previous guests. If you find that the gas has not been filled, you must contact us immediately! We request that prior to **your** check-out, the gas tank of the boat be filled with **non-ethanol gas/oil mix**. If both boat gas is not re-filled a **\$100 fee plus cost of missing gas/oil** will be charged, and deducted from your security deposit.

PONTOON BOAT (SYLVAN/GRAY & TEAL)

- Required Gas & Oil can be purchased right in Inlet at the Citgo Station.
- Use the Red Gas Can and funnel provided, OR the removeable gas tank on the boat to purchase, transport and fill. They are located under the sundeck of the boat. The sundeck has (2) clips (one on each side). Please use care when unclipping to open the sundeck.
- **The boat requires a GAS/OIL MIX and Non-Ethanol Gas!!! Both** can be purchased at the gas station in Inlet.
- Please use this chart so you put in the correct amount of oil...or damage could result:
 - 1 gallon of gas + 3 oz two-cycle oil
 - 2 gallons of gas + 6 oz two-cycle oil
 - 3 gallons of gas + 9 oz two-cycle oil
 - 4 gallons of gas + 12 oz two-cycle oil
 - 5 gallons of gas + 16 oz two-cycle oil



Park Here at Retreat

Leave ropes/hooks tied to boat! Unhook from dock!



WATER

- Water at the camp faucets is supplied from the lake, and is NOT for drinking.
- Please bring your own drinking water.
- The faucet (lake) water is fine for cooking, washing dishes, brushing teeth, bathing and washing clothing.
- **DO NOT** flush disposable napkins, diapers, wipes, etc., down the toilet. Please be kind to our septic system.



NO SMOKING PLEASE!

- Absolutely **NO SMOKING** is allowed inside the camp, on the front screened porch, balcony or on boats, at any time!
- Any evidence of smoking in home, on porch, balcony, or on boats will result in automatic forfeit of ENTIRE deposit.



NO CELL SERVICE....Unplug!

- Please be advised, there is NO cell service throughout much of the Adirondack Park, including Camp Loon! Take the opportunity and UNPLUG!
- We DO, however, have WiFi at camp! (Shhhhhh! Don't tell your kids!), so you can get internet service if needed.
- **The Wi-Fi passcode is the camp phone number 3153576106.**
- We do also have a smart TV. You may use the smart TV to connect to your own personal Netflix, Hulu, Firestick, etc. There is no cable or basic tv access.



PETS/DOGS... "Paws, and Enjoy"

- Well behaved dogs are welcome at Camp Loon! We are dog lovers, and have three labs of our own!
- However, No pets shall be allowed anywhere in or on the premises without owner's written permission at time of booking. Violation of this rule shall result in forfeiture of all security deposit, rent paid, and grounds for immediate eviction.
- If you are vacationing with your furry friends (dogs only please), you are responsible for removal of all droppings on camp property. Dog droppings CAN, in fact, attract bears.
- Please do not leave your dog unattended, or allow excessive barking.
- **DOGS ARE NOT ALLOWED ON NEW LIVINGROOM FURNITURE OR BEDDING! Any evidence of dogs on new furniture or bedding is immediate forfeit of entire security deposit!**



CAMPFIRE PIT...It's S'mores Time!

- Please keep all campfires under control.
- There is a stone lined campfire pit to use.
- Outdoor fires and ashes must be doused with water if you plan to leave it unattended.
- Campfire wood is not included in your rental. Campfire wood may be purchased at grocery store in Inlet, or several campfire stands along Route 28.



WOODSTOVE...Seasonal Coziness

- The wood stove may **NOT** be operated during the summer months.
- If written permission is given by the owner to use the wood stove, (during fall and spring rentals), the tenants will be fully responsible and liable for its safe operation.
- Firewood is not provided by Owner.
- Do NOT burn trash in the woodstove
- TO OPERATE WOOD STOVE...
 - Open front doors, place wood inside and light
 - Do NOT adjust the lever on the LEFT side of stove (operates flue...which is open at all times!)
 - You may adjust lever on the RIGHT which regulates air flow
 - Please clean out ashes from stove and lower tray (put them in campfire pit) before you check out...**DO NOT PUT ASHES IN THE WOODS!!!!**
 - Do NOT put anything on or near the stove....it gets EXTREMELY hot!!!!
 - Use potholder for levers!!! They get EXTREMELY hot!!!!
 - Never leave unattended!



ELECTRICAL BREAKER PANEL/POWER OUTAGE

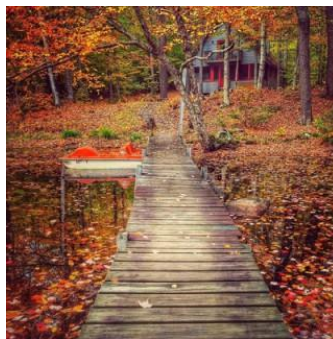
...Grab a flashlight and tell some stories!

- If you arrive at camp (especially during Spring or Fall season), we may have the power shut off at the panel/breaker box. Or if a breaker goes off during your stay, the electrical breaker/panel box is located on the living room wall, next to the side window. The breakers are clearly labeled. The hot water tank is GREEN.
- In the event of power outage (which does occasionally occur in the Adirondacks), you can find a supply of flashlights, candles and matches in the upper kitchen cupboard next to the fridge.
- **PLEASE DO NOT LEAVE BURNING CANDLES UNATTENDED!**



GO JUMP IN THE LAKE....Or at least dip your toes in!

- Please keep in mind that this is a waterfront property with beautiful, pristine, mountain clear water...right off the dock and shoreline. Enjoy it!
- Be sure that children and non swimmers are supervised properly.
- Camp Loon offers a beautiful, gradual, sandy swimming area, right next to our dock. Lots of fun for kids, or perfect for cooling off on a hot summer's day!
- Sit on the dock and dip your toes in, or take a refreshing swim.
- **PLEASE BE ADVISED....NO DIVING OFF DOCK!! Lake levels fluctuate throughout the year, and diving off our dock is not safe, and is not permitted!**



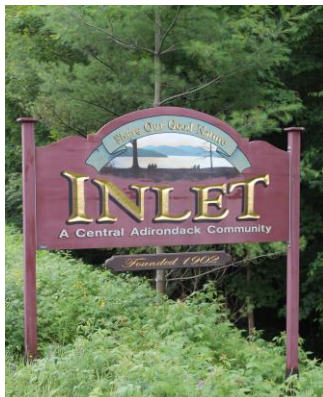
NAVIGATING THE PROPERTY

- There is some uneven terrain, including exposed tree roots and footbridge crossing a shallow waterway.
- Most people should not have a problem, but please use care as you enjoy our "neck of the woods".



JUST A FEW THINGS BEFORE YOU LEAVE...

- Please leave the camp in very clean condition...the way you should find it upon your arrival. **Please contact us immediately upon your arrival, if you have any concerns with the condition of the camp.**
- Please vacuum, sweep, wipe out the fridge & microwave, and remove all garbage and recyclables from camp.
- Please make sure boat gas has been replaced.
- Please check under beds, and behind doors for personal belongings.
- Please close and lock all windows, and master bedroom balcony door.
- Please turn off all lights and fans.
- Please lock both front & back doors.
- Please return house key to lock box.
- Please leave boat keys in boat at Retreat dock.
- *Please take a moment to take one more deep breath of fresh mountain air, one more glance at the glistening lake, one more listen to the Adirondack peaceful, and one more pause to take in the experience you've had with your family and friends at Camp Loon.*



Please enjoy your stay!

We hope it will be unforgettable, relaxing and full of memories that will last a lifetime!

We welcome you to come back and visit soon!!



"Wish you well"...Your Hosts...The Lathans



Sharing our Love of the Adirondacks..

The Adirondacks is the place to come if you desire a destination that can provide peaceful nature, local hospitality, quaint shops, incredible restaurants, breathtaking views, adventures of all sorts, a slower way of life, limited cell service (a bonus if you need an excuse not to be bothered by work!!), and the perfect setting to gather with those you love!

Our first trip to the Adirondacks was in September 1991, just before we were engaged. We fell in love in the Adirondacks, with each other, and with the area! We continued to visit the Adirondacks every year, even as our family grew. Every year it was the vacation choice...offering lots to do, and the chance to unwind together!

In 2009 we began staying on 6th Lake, at the 6th Lake Retreat, hosted by Mark & Cheryl Bibbens...and we were hooked! 6th Lake is very special!! Like the other Adirondack lakes, it is a crystal clear, mountain filtered body of water. However, it is one of the smaller lakes, perfect for canoeing, kayaking and swimming...without the worries of excessive boat traffic. PLUS....6th Lake is connected to 7th Lake...a more expansive lake with jaw dropping views of the mountains and evergreen covered state lands!

In 2017, a dream that was sparked many years ago, became a reality, and we purchased Camp Loon from our beloved friends, Mark & Cheryl. Camp Loon is very special...and we look forward to sharing it with you!

Our family truly loves the Adirondacks, and all that it has to offer...quiet, lazy days at camp or exciting adventures white water rafting or discovering a new place to eat! Listening to the loons, fishing or just dipping our toes in the lake. Our family memories are heavily ingrained with time spent together, with each other, and friends in the Adirondacks.

We look forward to hosting you, your family and friends...in the hopes you will gather, unplug, unwind and connect with your loved ones and nature!

The Adirondacks, Inlet NY..."Where Mountains & Memories Meet"

Warmly Yours,

The Lathans....Gina, Jeff, Josh, Adrianna & Jonny

The Story Behind..... The Adirondack Guide Window



Wanting to put our "special touch" on some of the décor of Camp Loon, we thought it would be great to get our hands on Adirondack Guide Books from years that were milestones for our family, and display them in some way.

Finding the Books...Of course, over the years, we had saved some of the books from our visits. We did not, however, have all of the "special" years we were looking for. After calling around to several places, including the Town of Webb Historical Association/Goodsell Museum, in Old Forge, we had no luck! The day after our call, Kristy Rubyor, the Assistant Director of the Goodsell Museum was getting something out of a storage room. Just before she switched off the light she glanced up at the top shelf, and thought, "What is in that box? I've never seen that before." She looked inside, and it was full of Adirondack Guide books! She immediately called us! She had every year we were looking for!

The Years...

1991...The first year we visited the Adirondacks, just before we were engaged.

1993...The year we were married

1995...The year our son, Joshua, was born

1997...The year our daughter, Adrianna, was born

2000...The year our son, Jonathan (Jonny) was born

2017...The year we purchased Camp Loon

The Window (Frame)...We also searched to find a frame of some sort, to display the books. We knew we wanted something unique. We scoured antique shops and garage sales looking for the "right" frame or window. Then we remembered something from 21 years ago. Our family home is an old dairy farm, built in 1903. When we bought the property in 1996, there were only a few items left behind, including an old crate in the attic, left over posters from the auction that was held in the 1970's when the original family stopped farming, and..... some old, loose, windows in the barn! We had tucked them away 21 years ago and had not looked at or moved them since! We pulled one out, and it was perfect!

*****If you get a chance, visit the Town of Webb Historical Society Goodsell Museum in Old Forge! It is FREE, and very interesting!! They are located across from the Old Forge Post Office on the south end of town.***



EMERGENCY CONTACTS

FIRE OR MEDICAL EMERGENCY: 911

Other Important Contact Numbers...

Gina Lathan (585) 409-8009

Jeff Lathan (585) 831-0885

Email: info@camploon.com

Sixth Lake Retreat (Parking & Dock Camp) (315) 357-6126

Medical Non-Emergency

**Town of Webb Health Center
114 South Shore Road, Old Forge
(315) 369-6619**

24-Hour Medical Emergency Care

**St Luke's Hospital, Utica (315) 624-6114
St Elizabeth's Hospital, Utica (315) 798-8111**

Drug Store

Kinney Drugs, Old Forge (315) 369-6044

Veterinarian

**Countryside Veterinary Clinic, Otter Lake (315) 369-2130
Countryside Veterinary Clinic, Lowville (315) 376-6563**