



PUBLIC SAFETY TRAINING CENTER

Community Stakeholder Advisory Committee
October 26, 2021

AGENDA

- I. Welcome/Call to Order – APF**
- II. Roll Call**
- III. Governance**
 - a. Adoption of Agenda
 - b. Approval of Minutes
 - c. Elections – Committee Chair, Co-Chair, Secretary
- IV. Development Process/Timeline Overview**
- V. Site Plan Review**
 - Original Concept Plan - Key Features
 - Site Analysis – Trees, Grading, Creeks and Ponds
 - Modified Concept Plan - Key Changes
- VI. Site Due Diligence Studies**
 - Environmental Review
 - Cultural Assessment/ Preservation Plan
 - Noise Analysis
- VII. Site Visit**
- VIII. General Remarks**
- IX. Adjournment**

DEVELOPMENT PROCESS



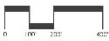
SITE PLAN REVIEW

- ❖ **Original Concept Plan - Key Features**
- ❖ **Site Analysis – Trees, Grading, Creeks and Ponds**
- ❖ **Modified Concept Plan - Key Changes**

SITE PLAN REVIEW

LEGEND

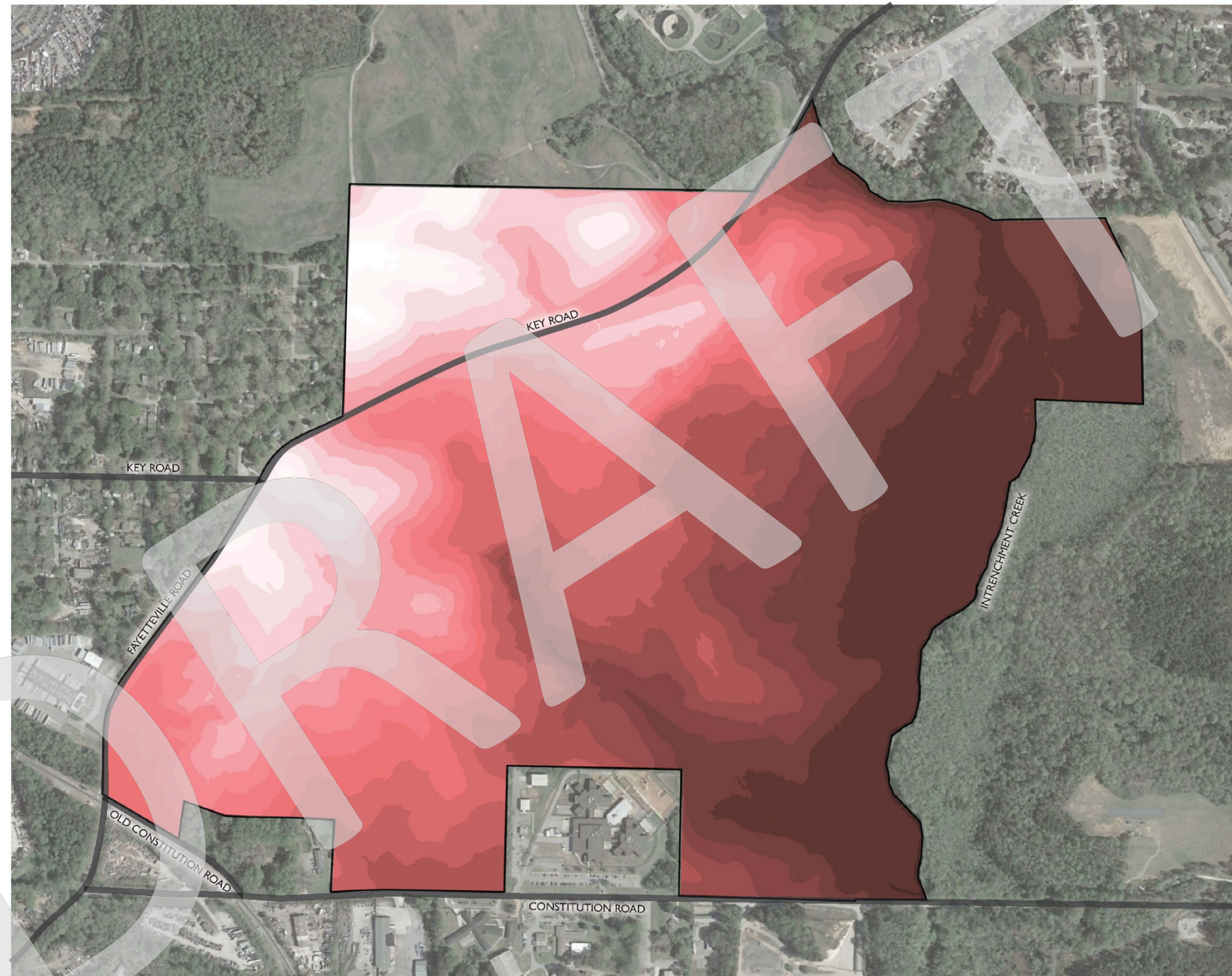
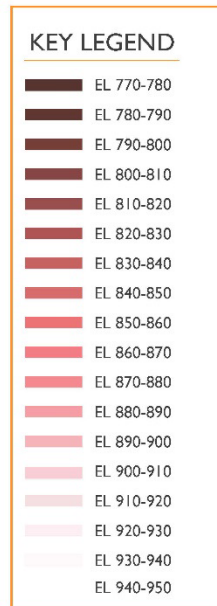
- A** LEADERSHIP BUILDING / AUDITORIUM
18,350 SF
- B** ADMINISTRATION / CLASSROOM BUILDINGS
+/- 100,000 SF
- C** FUTURE E911 BUILDING
30,000 SF
- D** HOUSING
+/- 18,800 SF (40-50 ROOMS)
- E** PT FIELD / BLACKHAWK LANDING PAD
- F** WATER TOWER
- G** FUELING STATION
- H** EVOC
10-12 ACRES
- I** VEHICLE STORAGE
- J** MOCK CITY WITH SHOOT HOUSE
- K** BURN / SMOKE BUILDINGS
- L** EXPLOSIVES
125' RADIUS
- M** SHOOTING RANGE
50 LANES @ 25-500 YD.
- N** FUTURE DEVELOPMENT
- O** RUNNING TRAIL
+/- 1 MILE LOOP
- P** HORSE BARN
35-40 STALLS
- Q** KENNEL
- R** PASTURE
+/- 31 ACRES
- S** AGRICULTURAL FIELDS (FUTURE)
- T** CONTROLLED ACCESS
- U** TRAINING FIRE STATION
9,500 SF
- V** PUBLIC PARK
+/- 4 MILES OF TRAILS
- W** TRAIL CONNECTION TO SOUTH RIVER TRAIL - PATH
- X** POTENTIAL PASTURE
+/- 45 ACRES
- Y** TRAINING POOL
OLYMPIC SIZE W/VEHICLE CRANE
- Z** SWIFT WATER RESCUE
+/- 6 ACRES



Atlanta, GA
October 26, 2021

ATLANTA PUBLIC SAFETY
TRAINING CAMPUS
PREVIOUS MASTERPLAN

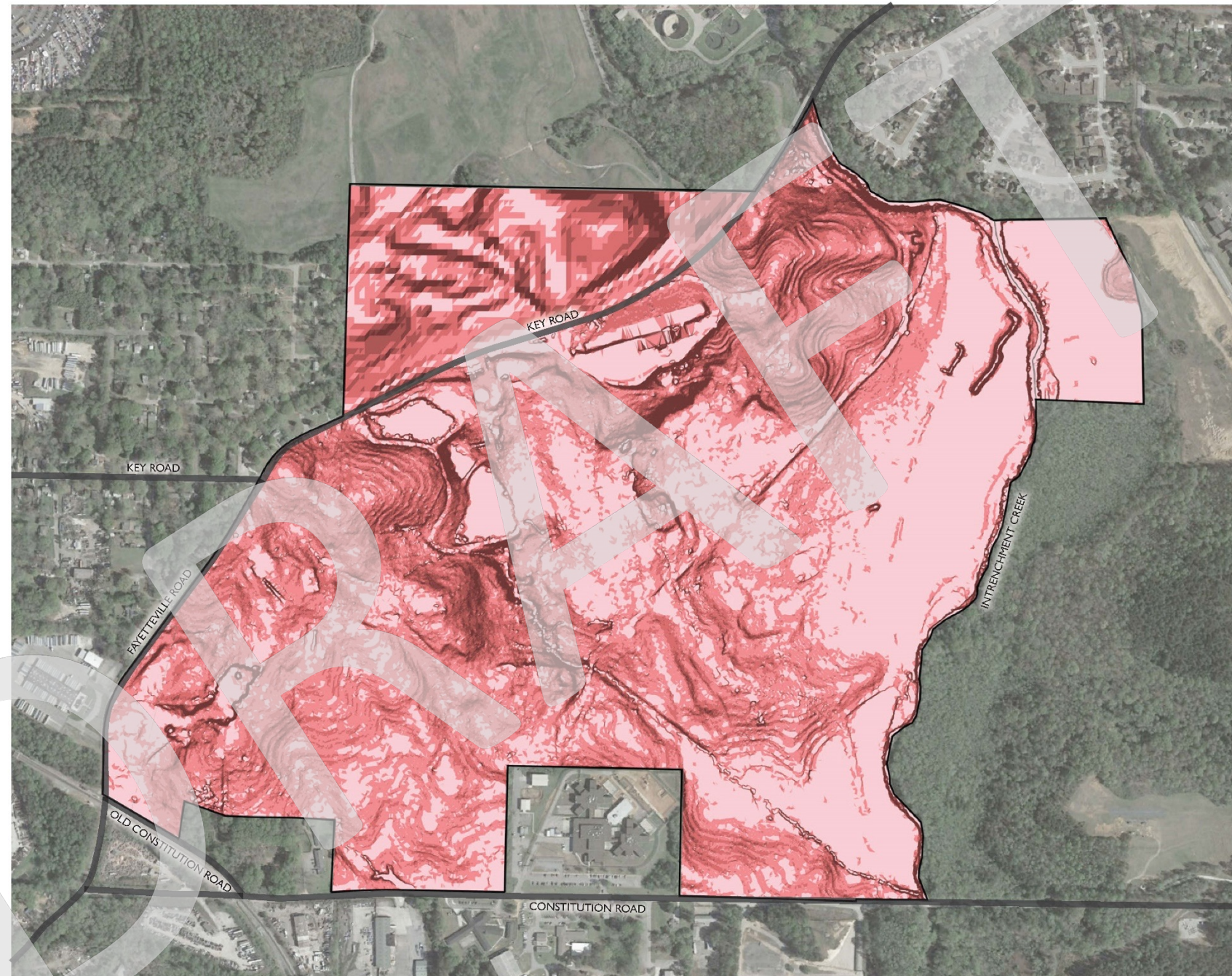
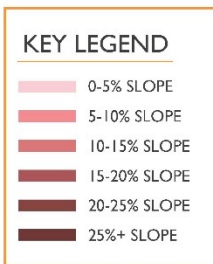
SITE PLAN REVIEW



Atlanta, GA
October 26, 2021

ATLANTA PUBLIC SAFETY
TRAINING CAMPUS
ELEVATION ANALYSIS

SITE PLAN REVIEW



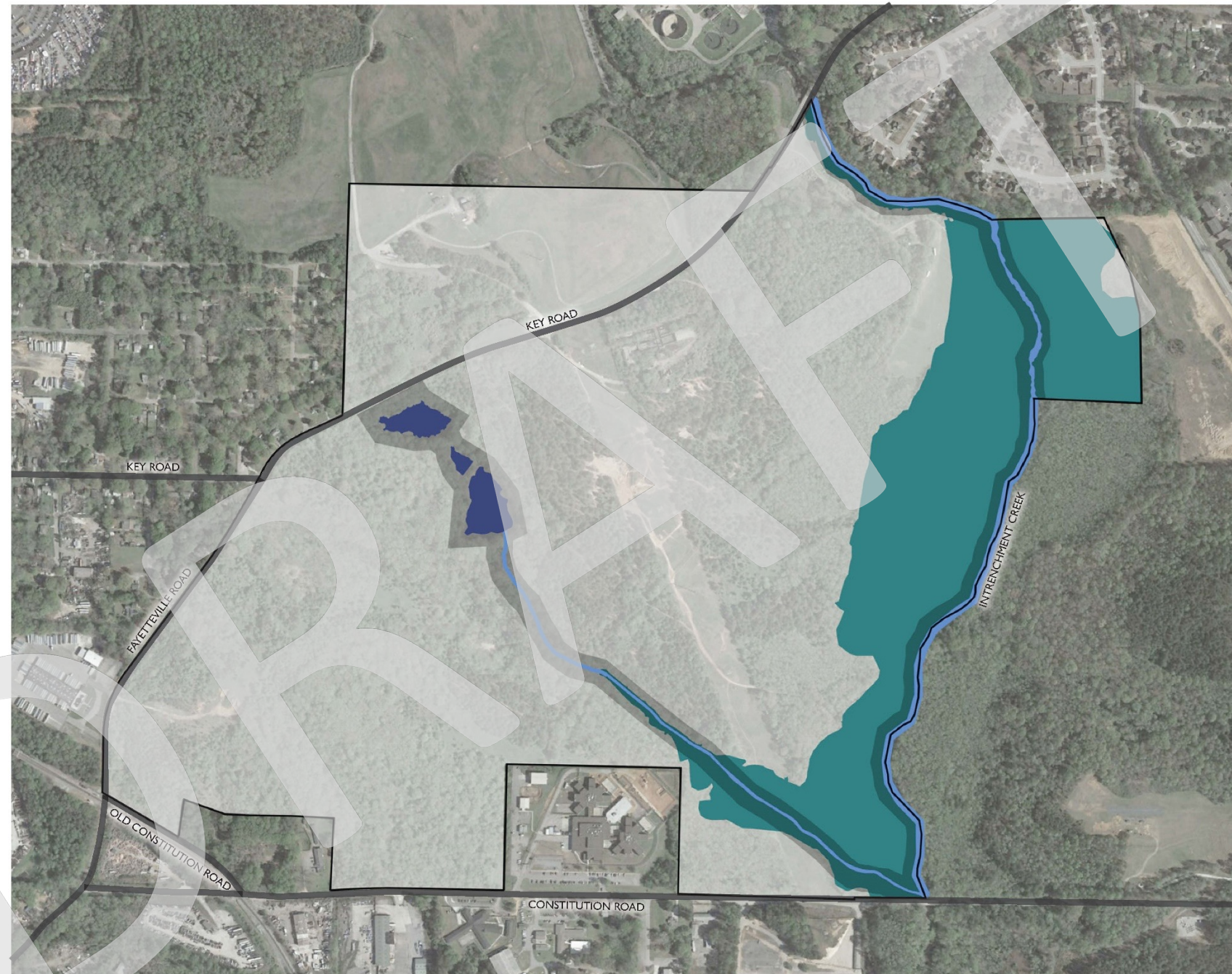
Atlanta, GA
October 26, 2021

ATLANTA PUBLIC SAFETY
TRAINING CAMPUS
SLOPE ANALYSIS

SITE PLAN REVIEW

KEY LEGEND

- FLOODPLAIN
- CREEK
- LAKE
- 75' STREAM BUFFER



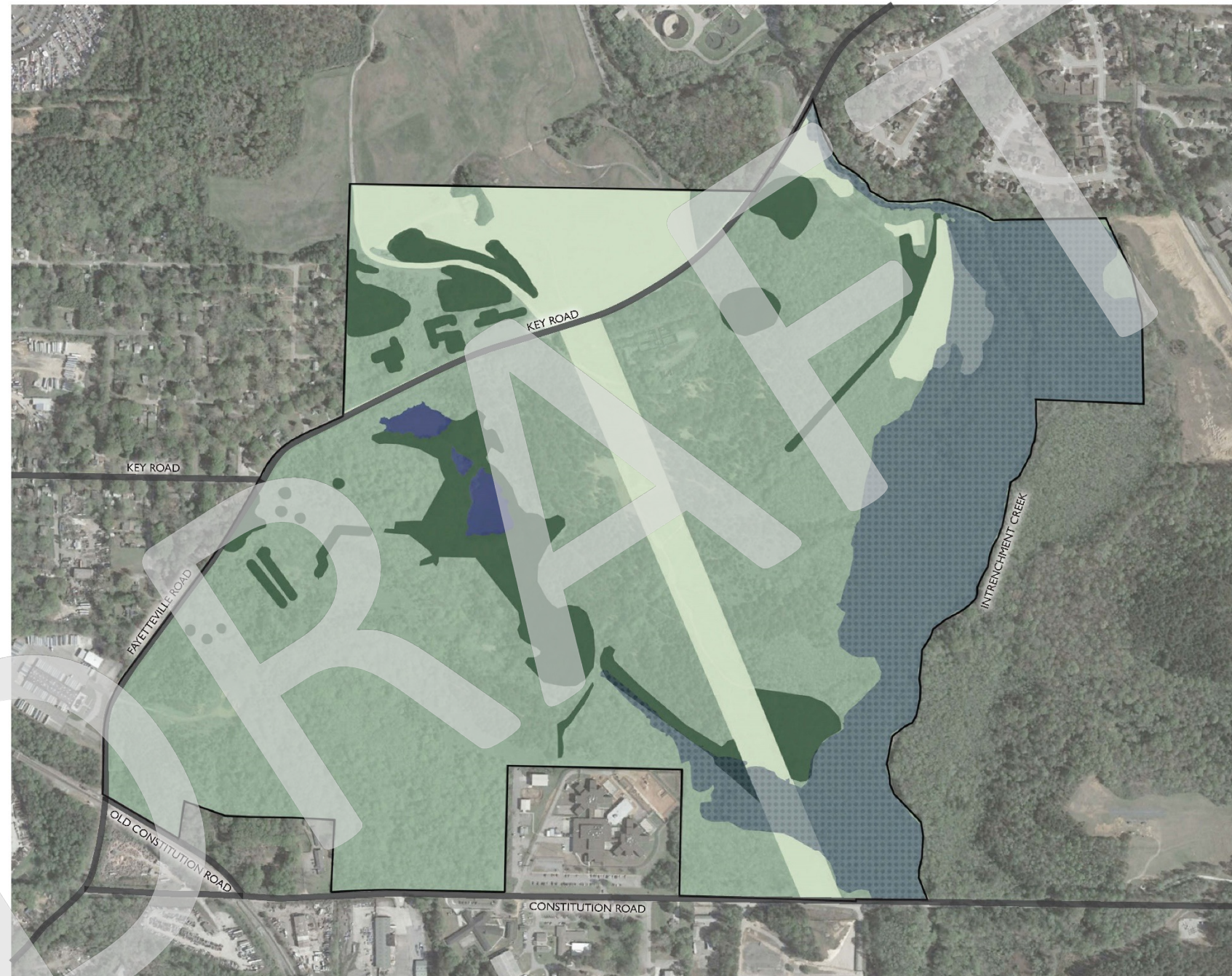
Atlanta, GA
October 26, 2021

ATLANTA PUBLIC SAFETY
TRAINING CAMPUS
HYDROLOGY ANALYSIS

SITE PLAN REVIEW

KEY LEGEND

- OPEN SPACE
- EARLY SUCCESSION TREES
- MATURE GROWTH TREES
- LAKE
- RIPARIAN ZONE



Atlanta, GA
October 26, 2021

ATLANTA PUBLIC SAFETY
TRAINING CAMPUS
VEGETATION ANALYSIS

SITE PLAN REVIEW

KEY LEGEND

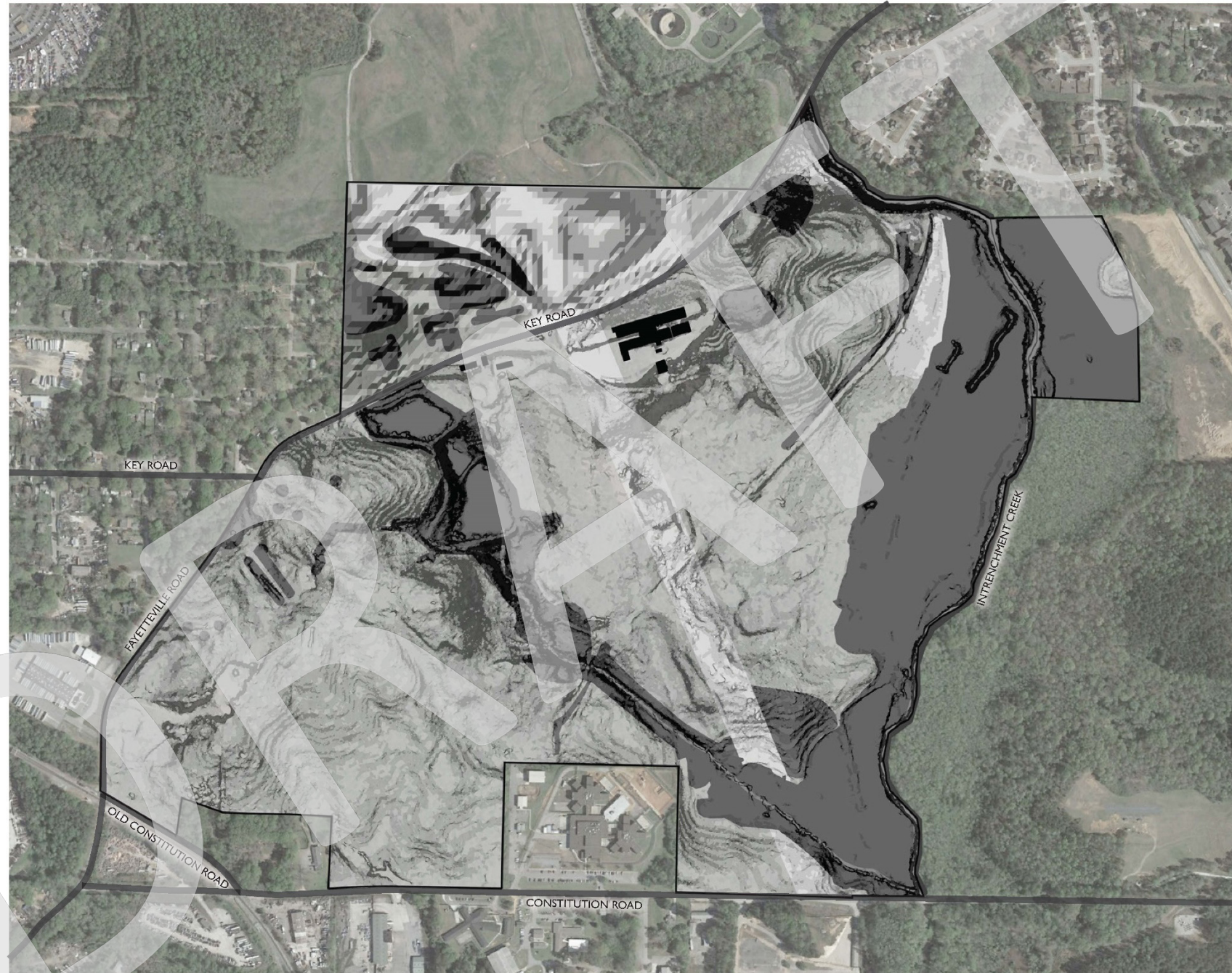
EXISTING BUILDING FOR
POSSIBLE PRESERVATION



Atlanta, GA
October 26, 2021

ATLANTA PUBLIC SAFETY
TRAINING CAMPUS
EXISTING STRUCTURES

SITE PLAN REVIEW



ATLANTA PUBLIC SAFETY TRAINING CAMPUS COMPOSITE ANALYSIS

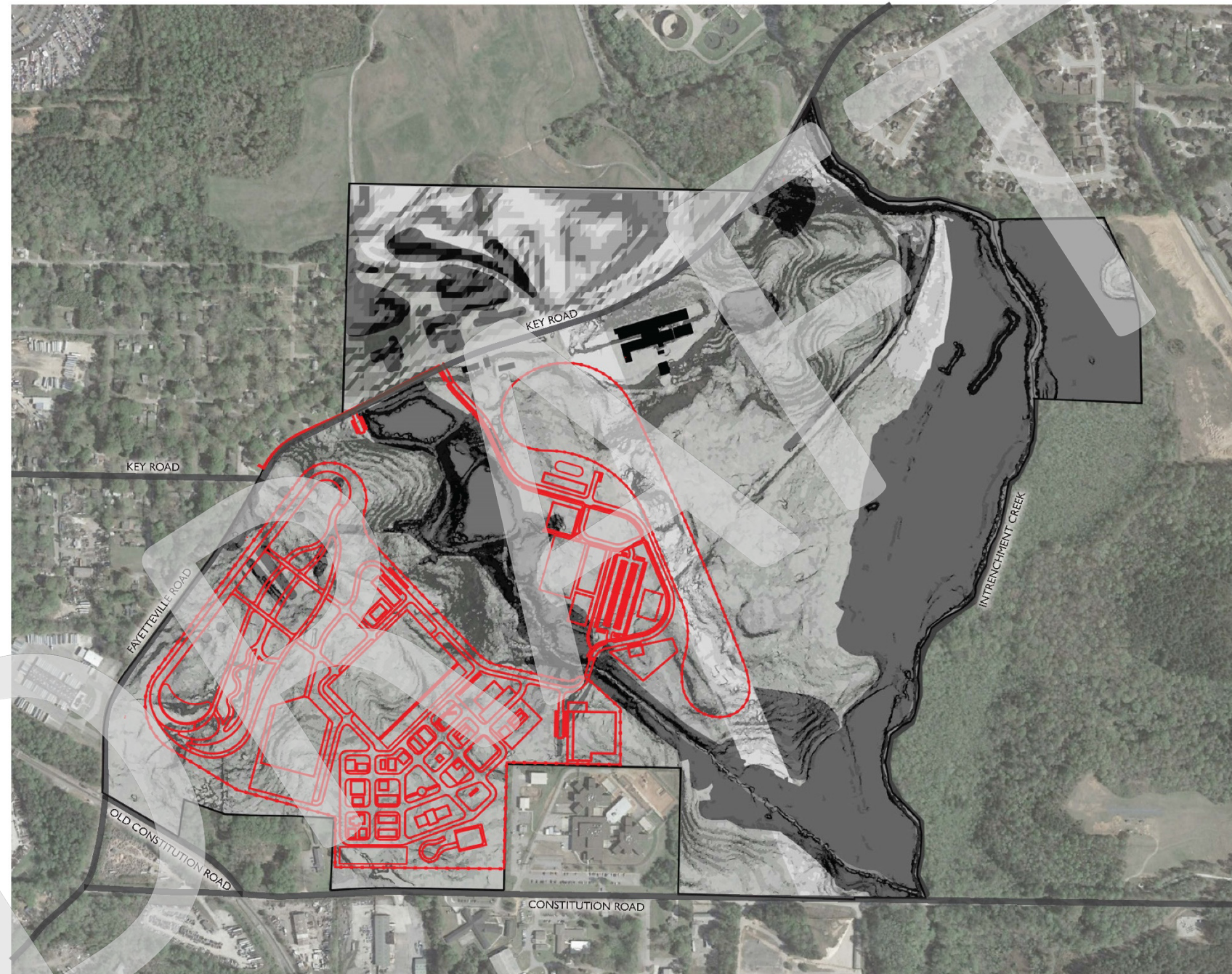
SITE PLAN REVIEW



Atlanta, GA
October 26, 2021

ATLANTA PUBLIC SAFETY
TRAINING CAMPUS
PREVIOUS MASTERPLAN OVERLAY

SITE PLAN REVIEW



Atlanta, GA
October 26, 2021

ATLANTA PUBLIC SAFETY
TRAINING CAMPUS
NEW MASTERPLAN OVERLAY

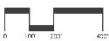
SITE PLAN REVIEW

LEGEND

- A** LEADERSHIP BUILDING / AUDITORIUM
+/- 22,500 SF
- B** ADMINISTRATION / CLASSROOM BUILDINGS
+/- 50,000 SF
- C** FUTURE BUILDING LOCATIONS
- D** QUAD / PT FIELD
- E** HORSE BARN
+/-40 STALLS
- F** PASTURE
+/- 15 ACRES
- G** KENNEL
- H** CONTROLLED ACCESS
- I** SHOOTING RANGE
- J** TRAINING FIRE STATION
- K** CLASS A BURN BUILDING
- L** FIRE TRAINING FACILITIES
 - BURN TOWER
 - GAS PROPS / OVERTURNED TANKER
 - DRAFTING RESCUE / RECOVERY POND
 - GLASS BREAK & TECHNICAL RESCUE
 - RUBBLE PILE & CONFINED SPACE
 - WOOD CUTTING
 - SWIFT WATER RESCUE
- M** MOCK VILLAGE
 - GAS STATION / BANK
 - BAR / NIGHTCLUB
 - SCHOOL
 - RESIDENTIAL SF HOMES
 - APARTMENTS (LOW & HIGH RISE)
 - PARK / SPLASH PAD
 - TRAINING WAREHOUSE
- N** VEHICLE SKILLS PAD
- O** SKID PAD
- P** EVOC
- Q** VEHICLE STORAGE
- R** OBSERVATION TOWER
- S** STORMWATER DETENTION
- T** FUTURE PUBLIC PARK LAND
- U** PUBLIC PARKING AT TRAILHEAD
- V** EXISTING BUILDINGS TO REMAIN
- W** TO SOUTH RIVER TRAIL
- X** 100'+ KEY ROAD BUFFER
- Y** KEY ROAD IMPROVEMENTS
 - 5' SIDEWALK TO CAMPUS ENTRANCE
 - MEDIAN AT INTERSECTION



ATLANTA PUBLIC SAFETY
TRAINING CAMPUS
UPDATED MASTERPLAN



Atlanta, GA
October 26, 2021

SITE PLAN REVIEW

LEGEND

-  PARK SPACE
190 ACRES
-  GREEN SPACE
75 ACRES
-  TRAINING CAMPUS
85 ACRES



Atlanta, GA
October 26, 2021

ATLANTA PUBLIC SAFETY
TRAINING CAMPUS
UPDATED MASTERPLAN

SITE DUE DILIGENCE STUDIES

- ❖ **Environmental Studies**
- ❖ **Cultural Resources/Preservation Assessment**
- ❖ **Noise Analysis**

❖ Phase 1 Environmental Study

- On-Site Issues

- Potential soil and groundwater contamination from un-labeled cans
- Stained concrete and remnants of concrete fuel dispenser islands and piping
- Stained soil and discarded 55-gallon drums
- Large quantities of tires and dumped debris are present throughout portions of the site.
- Potential for buried debris in other areas of the site due to historical use as a farm and apparent grading activities associated with the farming operations.

❖ Phase 1 Environmental Study

- **Off-Site Issues**
 - Potential for impairment to groundwater as a result of the Solid Waste Landfill
 - Potential for impairment to groundwater as a result of the tire burning activities
- **Data Gaps:**
 - The former use and contents of empty 20,000-gallon above ground Storage Tank
- **Closed Recognized Environmental Condition:**
 - No Further Action (NFA) granted for two underground storage tanks and approximately 44 tons of soil removed from the former tank pit.

❖ Phase 2 Environmental Study

- **Limited Site Investigation**

(LSI) to assess for potential impacts to the site resulting from the recognized environmental conditions (RECs) and Significant Data Gaps identified in the Phase I Environmental Site Assessment

- 16 soil borings
- 6 temporary groundwater monitoring wells
- Laboratory testing of samples
- Final report

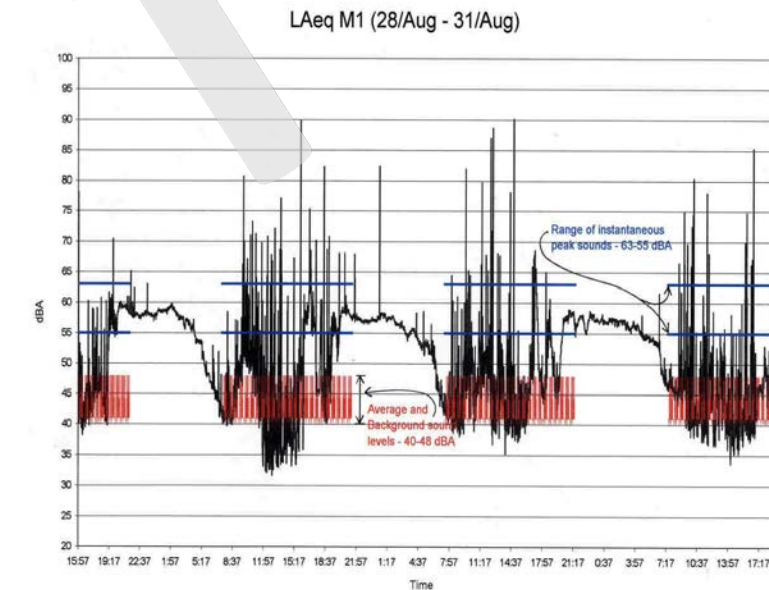
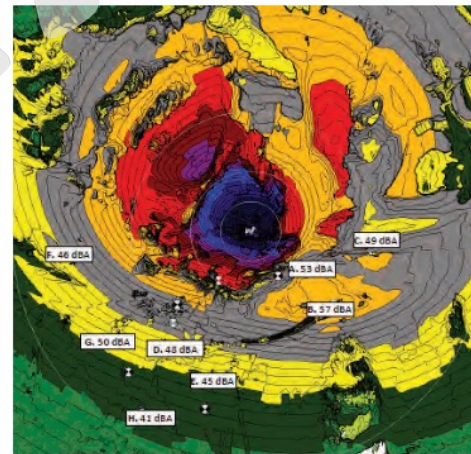
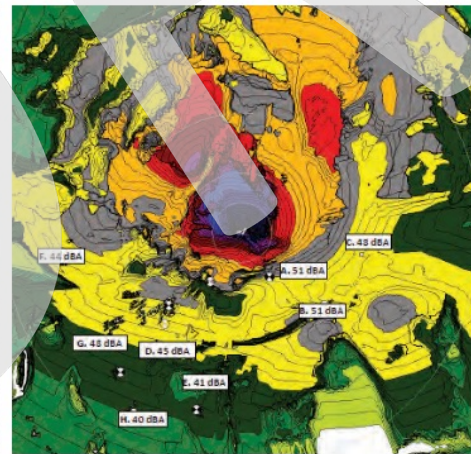
❖ Cultural Resources/Preservation Assessment

- **Background research** of the general vicinity, historical maps and aerial images, and local historic societies;
- **Site inspection** of exposed ground surface and subsurface testing at prescribed intervals to meet state standards for archaeological testing;
- **Recording/assessing buildings** 50 years or older;
- **Preparation of a final report** according to Georgia standards

SITE DUE DILIGENCE STUDIES

❖ Noise Analysis

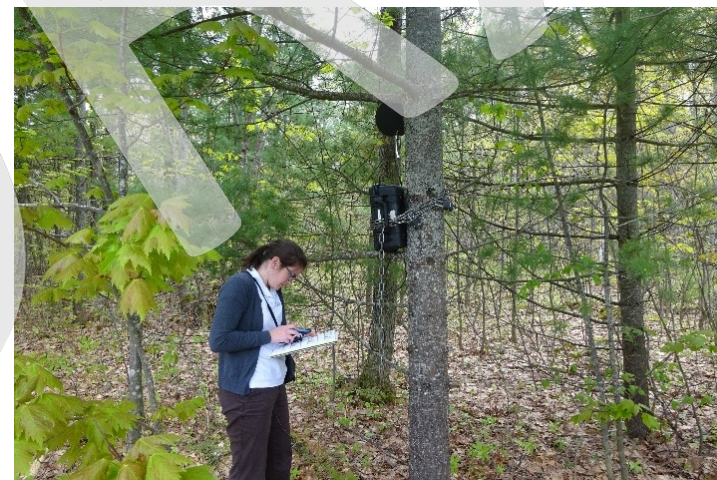
- **Major Components of Firing Range Noise Study**
 - 1 week and short-term ambient measurements on site
 - Live Fire exercise on site
 - 3D Computer model of site and surrounding areas
 - Study Orientation of Range
 - Study Noise Mitigation Options
 - Report summarizing findings and recommendations



SITE DUE DILIGENCE STUDIES

❖ Noise Analysis

- **Ambient Measurements - Long + Short Term**
 - What is the current acoustic environment?
 - Long term (1 week) and short-term measurements at multiple locations on site to determine fluctuations in sound level and frequency over a 1-week period
 - Establishes the baseline ambient conditions on site to determine the relative impact of the range on these spaces.



AGENDA

- I. Welcome/Call to Order – APF
- II. Roll Call
- III. Governance
- IV. Development Process/Timeline Overview
- V. Site Plan Review
 - Original Concept Plan - Key Features
 - Site Analysis – Trees, Grading, Creeks and Ponds
 - Modified Concept Plan - Key Changes
- VI. Site Due Diligence Studies
 - Environmental Review
 - Cultural Assessment/ Preservation Plan
 - Noise Analysis
- VII. Site Visit**
- VIII. General Remarks**
- IX. Adjournment**