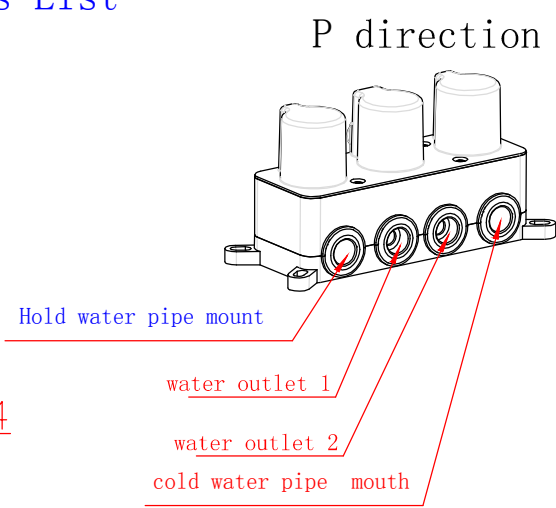
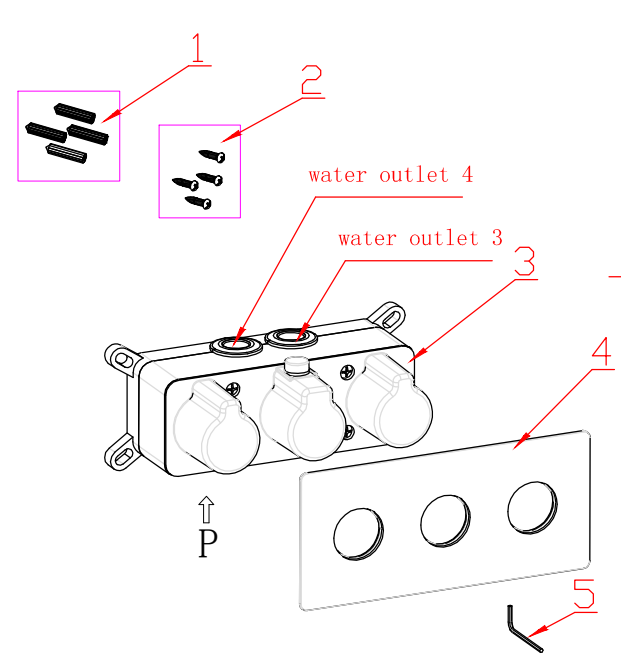


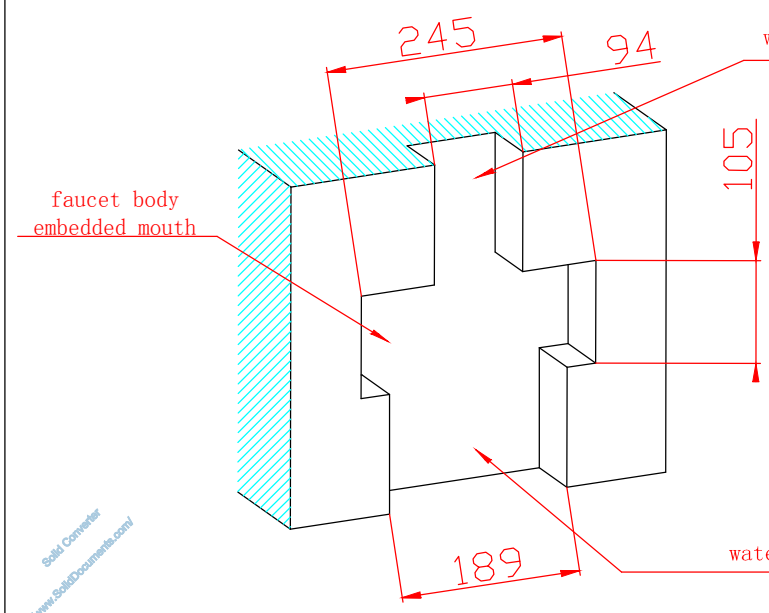
# Step 1(Body Valve)

## Parts List

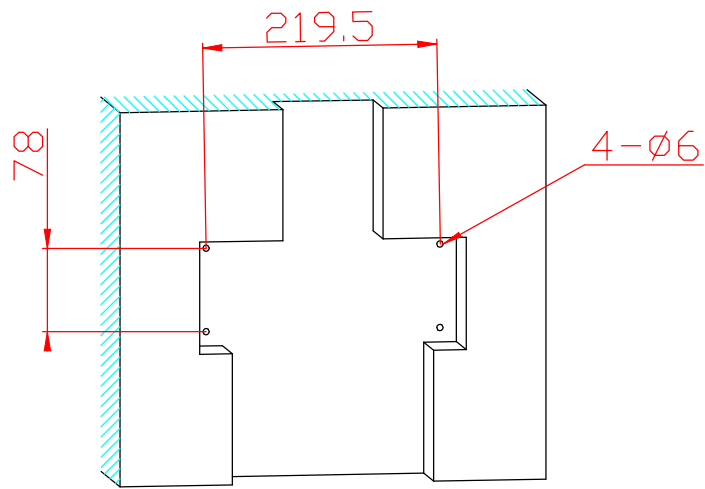


NO.	Name	Number
1	Fixed male screw	4
2	Expansion bolt	4
3	Embedded body	1
4	Board	1
5	2.5mm allen wrench	1

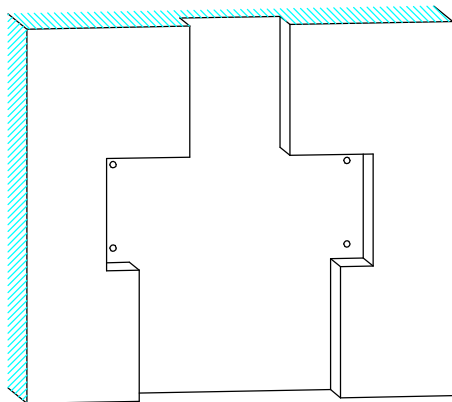
## Installation steps:



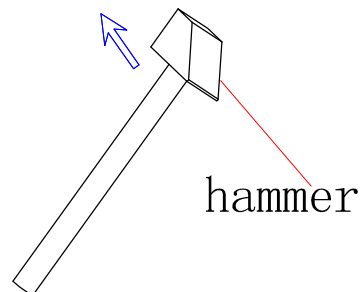
1. Accorading to the actual size, get all pipe embedded mounts well ready.  
Note: Embedded Depth of this shower valve :6.4-7cm

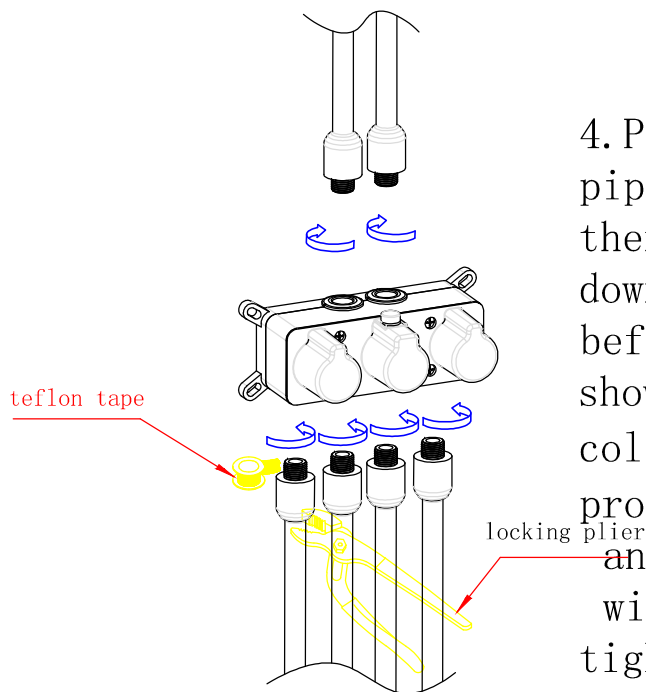


2. Play 4 PCS  
6MM screw hole  
on the wall  
according to the  
basic size of this  
product.

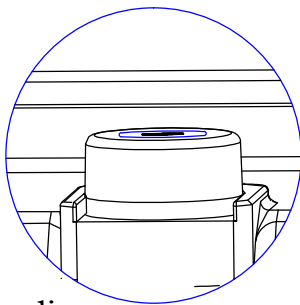


3. Play the 4  
explosion screws  
into the 4 hole  
with a hammer.

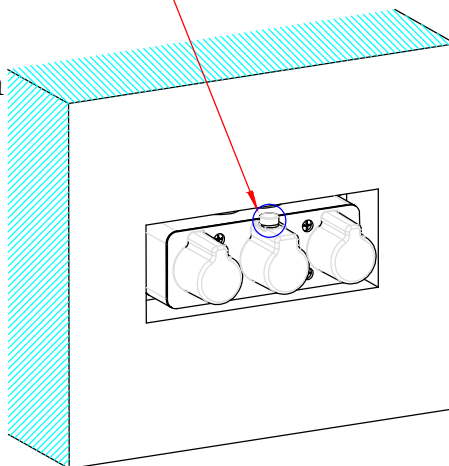




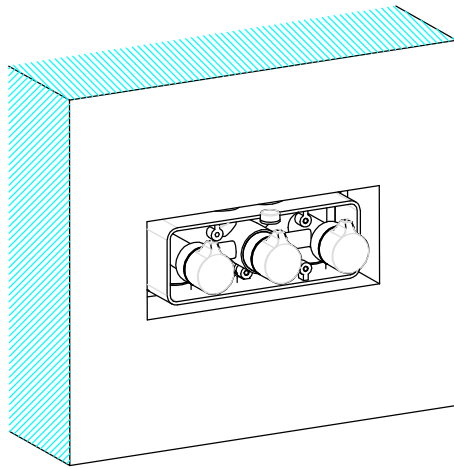
4. Please flush all pipelines to ensure that there is no debris such as downstream sand and gravel before connecting the shower. And then wrap hot & cold supply water pipes (not provided) and other water pipes. with teflon tape and screw tight by locking plier to ensure watertight seal.



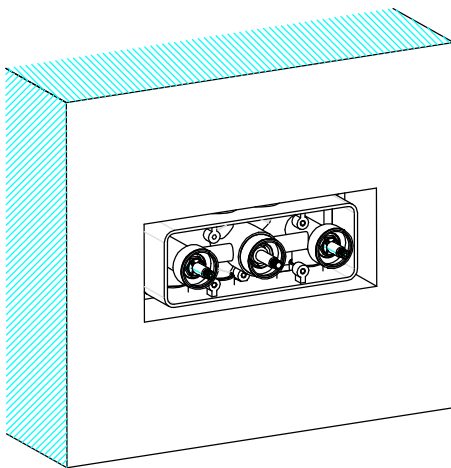
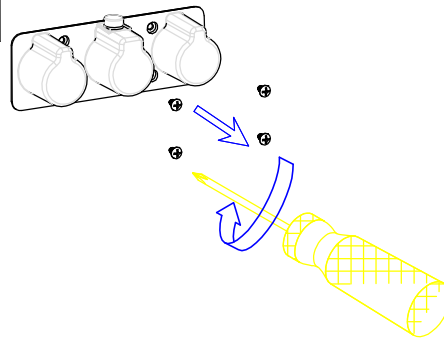
Level editor  
enlarge photograph



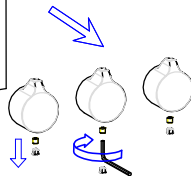
5. Adjust the embedded body (have connected all pipes) on the horizon line, and then screw the expansion bolts into fixed male screws to fix the embedded body. After that, open the water to test if all pipes have leakage or not and all water functions work well. At last, seal the wall.

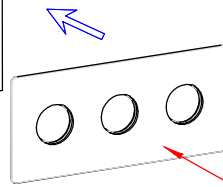
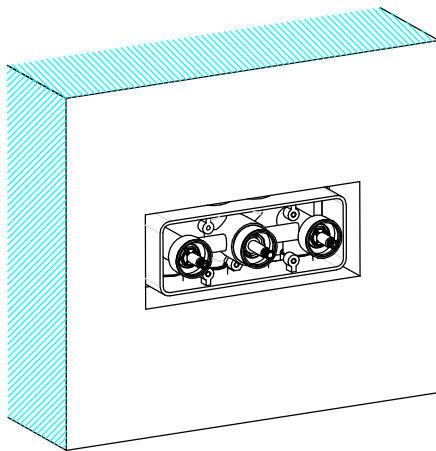


6. Use a phillips screwdriver to loosen the four M5 screws of the protection box at counterclockwise direction and then take out the protection box.



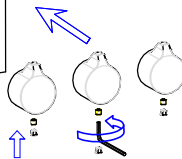
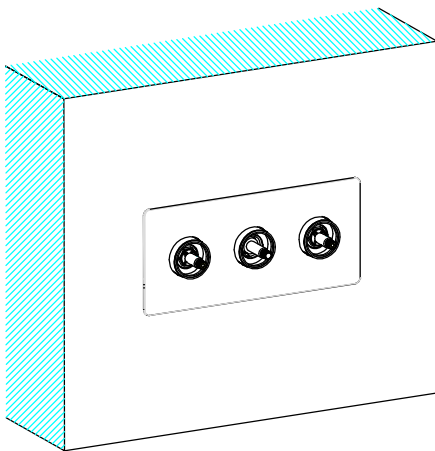
7. Remove three plug from handwheels first. Use 2.5 mm hexagon to loosen the three handwheels at counterclockwise direction, and take them out. Don't get off Wearing ring





8. Fix the  
board onto the  
Embedded body  
on the balance

Board



9. Install the  
handwheels and  
their plugs by  
the opposite  
direction as  
the 7th step.