

SPE-3000 Series

Reservoir Capacity:
3000-6000c.c

Flow at rated pressure:
4-0.4 L

Motor Size:
0.37kW(0.5 hp)

Maximum Operating Pressure:
700 bar

SPE-3000 Hydraulic Electric Pump

- Requires less energy, simple and easy to operate.
- Suitable for any industrial application.
- Handle and casing built together.
- Equipped with 10ft remote line.
- Carbon brushless motor, working frequently.



SPE-3000C

Custom build your Electric Pump:

SPE-3000 A 1 5 1 LT PG

1 2 3 4 5 6

1. Valve

A. 3way/ 2position built-in Solenoid Valve :

Advance Hold Return

B. Remote Release Pressure :

Advance Return
(Ideal for punching, crimping and cutting)

C. 3way/ 2position Manual Valve :

Advance Hold Manual return

D. 4way/ 3position Manual Valve :

Advance Hold Manual return

4. Phase

1=1ph

5. Reservoir

No word=3000c.c PU reservoir

LT=6000c.c Iron reservoir

★ User can order suitable reservoir.

2. Voltage/A

1=115V/7.5A

2=230V/2.8A

3. Hz

5=50/60Hz

6. fitting

P=Pressure adjust switch

G=Pressure gauge



LT=Iron reservoir



P=Pressure Adjust Switch



G=Pressure Gauge



Control Valve

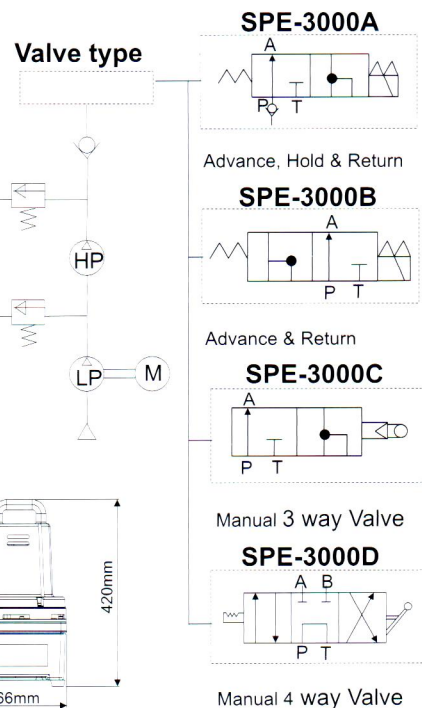
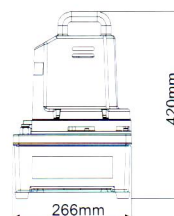
A single-acting cylinder must be powered by a pump with a 3-way solenoid (built-in) or manual valve.

Compare Model : SPE-3000APS (solenoid) or SPE-3000CPS (manual)



A double-acting cylinder must be powered by a pump with a 4-way valve. Compare Model : SPE-3000D

BASIC PUMP VALVE	Used with cylinder		Valve Function		
Manual 3 way Valve	●		●	●	●
Manual 4 way Valve		●	●	●	●



Model Number	Motor kW(hp)	Max. Pressure (psi)/(bar)	Pressure Rating (psi)/(bar)		Output flow rate (L/min)		dBA at Idle and 700bar	Weight (include oil) (kg)	Dimension (mm)
			1 st stage	2 nd stage	1 st stage	2 nd stage			
SPE-3000	0.37(0.5)	10,000(700)	200(14)	10,000(700)	4	0.4	85-90	16	250*270*400
SPE-3000 LT	0.37(0.5)	10,000(700)	200(14)	10,000(700)	4	0.4	85-90	24	300*350*460