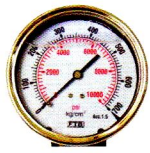


## XH Hydraulic Pressure /Force Gauges

How is a hydraulic pressure gauge model number is built up:

**X H O 2 . 5 C B M F F 2 P 1 K - M**  
 1 2 3 4 5 6



**CBM**

Center back mount



**CBMFF**

Center back mount with front fringe



**LM**

Lower mount



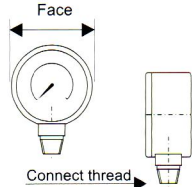
**LMBF**

frange back with mount Lower



**-M**

Max. Indicator Pointer



Connect thread  
 Pressure range : 0~15,000psi  
 Accuracy : ±1%

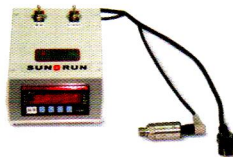
- Gauge style**  
 O=Oil  
 V=Vacuum(no stock)
- Face**  
 2.5=2.5"  
 4=4"  
 6=6"
- Connect style**  
 CBM= Center back mount  
 CBMFF= Center back mount with front fringe  
 LM= Lower mount  
 LMBF= Frange back with mount lower
- Connect thread**  
 2P=1/4PT  
 2N=1/4NPT  
 3P=3/8PT  
 3N=3/8NPT  
 4P=1/2PT  
 4N=1/2NPT
- Pressure range**  
 1,000 for count radix and then show unit  
 30P=30,000psi  
 1K=1,000kg  
 1B=1,000bar  
 0.15K=150kg
- Special**  
 M=Max. Indicator pointer

Model Number	Face (mm)	Style	Connect thread	Pressure range
XHO2.5CBMFF2P1K	60	Center back mount with front fringe	1/4PT	0~1,000kgf/cm <sup>2</sup>
XHO2.5LM2N1B	60	Lower mount	1/4NPT	0~1,000bar
XHO2.5LM2N1K	60	Lower mount	1/4NPT	0~1,000kgf/cm <sup>2</sup>
XHO2.5LM2P0.15K	60	Lower mount	1/4PT	0~150kgf/cm <sup>2</sup>
XHO2.5LM2P1K	60	Lower mount	1/4PT	0~1,000kgf/cm <sup>2</sup>
XHO2.5LM2P0.7K-M	60	Max. Indicating pointer	1/4PT	0~700kgf/cm <sup>2</sup>
XHO4CBM2P0.7K	100	Center back mount	1/4PT	0~700kgf/cm <sup>2</sup>
XHO4CBM2P1K	100	Center back mount	1/4PT	0~1,000kgf/cm <sup>2</sup>
XHO4CBM3P1K	100	Center back mount	3/8PT	0~1,000kgf/cm <sup>2</sup>
XHO4CBMFF3P0.35K	100	Center back mount	3/8PT	0~350kgf/cm <sup>2</sup>
XHO4CBMFF3P0.4K	100	Center back mount	3/8PT	0~400kgf/cm <sup>2</sup>
XHO4LM2N1B	100	Lower mount	1/4NPT	0~1000bar
XHO4LM3P0.15K	100	Lower mount	3/8PT	0~150kgf/cm <sup>2</sup>
XHO4LM3P0.25K	100	Lower mount	3/8PT	0~250kgf/cm <sup>2</sup>
XHO4LM3P0.35K	100	Lower mount	3/8PT	0~350kgf/cm <sup>2</sup>
XHO4LM3P1K	100	Lower mount	3/8PT	0~1,000kgf/cm <sup>2</sup>
XHO4LM3P0.15K-M	100	Max. Indicating pointer	3/8PT	0~150kgf/cm <sup>2</sup>
XHO4LM3P0.1K-M	100	Max. Indicating pointer	3/8PT	0~100kgf/cm <sup>2</sup>
XHO4LM3P0.25K-M	100	Max. Indicating pointer	3/8PT	0~250kgf/cm <sup>2</sup>
XHO4LM3P0.35K-M	100	Max. Indicating pointer	3/8PT	0~350kgf/cm <sup>2</sup>
XHO4LM3P0.5K-M	100	Max. Indicating pointer	3/8PT	0~500kgf/cm <sup>2</sup>
XHO4LM3P0.7K-M	100	Max. Indicating pointer	3/8PT	0~700kgf/cm <sup>2</sup>
XHO4LM3P1K-M	100	Max. Indicating pointer	3/8PT	0~1,000kgf/cm <sup>2</sup>
XHO6LMBF4N30P	100	Lower mount with back fringe	1/2NPT	0~30000psi

## XHD

### Digital, Hydraulic Force & Pressure Gauges

Power : AC110~220V  
 Accuracy : ±0.2%  
 Pressure range 15,000 psi.  
 Displays in psi , bar, Map, kg, lb..or user order.



Model Number	Description	Pressure range (psi)
XHD-1	Max. Indicating keep	0~15,000
XHD-2	Max. Indicating not keep	0~15,000