

LOCK NUT & POWER LINK



주식회사 **YHB**

**YHB
Global
Networks**

YHB concentrate to creating a transparent and enterprising corporate culture popular with the young talent, we build completely domestic & overseas business warranty service and global network for customer's satisfaction. On the basis of this, we devote ourselves to making the low cost/high efficiency product which the customers low costly use in the whole world .



**YHB
Global
Marketing**

YHB will be with the achievement of world's best technology, we focus the core of all our abilities on making an innovation of technology and quality. So we pursue jumping to global leader with providing distinctive customer's satisfaction.

Korea Factory

- Competitive price
- In time delivery
- Quality Assurance

Customer

- Green Products
- Thinking customer's health & safety
- Clean System

Management

- Customer's satisfaction
- Worker feel the fruitful life
- Develop Company's business

Osaka Office

- Local office & warehouse
- Able in time delivery
- Local maintenance

Shanghai Office

- Marketing of new products
- Agent Education
- After Service

| References |

| Domestic |

| Japan |

Samsung Mobile
 LG Mobile
 Yooil Machinery Co.
 Hwacheon Machinery Co.
 Namsun Machinery Co
 HMC Co.Ltd.
 Hyundai Power Tech
 Doosan Infracore
 Hyundai WIA
 Hanwha Machinery Co

Samsung Ele. Co.
 Mando Machinery Co.
 POSCO
 FUNAC Korea
 Samcheonri Machinery Co
 Hanmi Semiconductor Co.
 Hansol LCD Co. Ltd.
 YG-1 Co. Ltd.

Fukuda Trade Co.
 Hisico Co.
 OHM Elec. Co.
 Mitsubishi M/C Co.
 Sigiyaseiki Co
 Toyota Trade Co.
 Taeyang Machinery Co.
 Kihoo Trade Co

| Certification |



Company Introduction



- | Overview** Foundation : Dec. 1987
Factory : Building 5000m sq. / Worksite 7,000m sq
- | Business** Industry's : LOCK NUT
POWER LINK
Environmental's : Oil Mist Cleaner, Ictrical Precipitator
Coolant Gun, Dust Collector
- | Office** Seoul, Osaka Japan, Shanghai China, Taiwan, Vietnam

- 1987. 12. Established the company
- 1992. 04. Developed lock-nut with own technology
- 1993. 02. Designated as calibration inspection institute (Industrial Promotion Administration)
- 1993. 02. Acquired Q-mark (Korea Living Goods Test Inspection Office)
- 1995. 06. Awarded the prize for New Technology Development Competition Gwangju Metropolitan City
- 1995. 11. Commended and designated as domestication company for capital material industry from Ministry of Commerce and Industry No.16824
- 1996. 08. Acquired EM mark(National Quality Technology Board)
- 1997. 12. Designated as military special incentive company from Military
- 1998. 02. Selected the item for domestication for capital material in 1998(MOCIE):as Oil Mist Cleaner H.S. No.8421319000
- 1998. 03. Designated as the registered company for the Public Procurement Service
- 1999. 05. Acquired CE mark(TUV of Germany)
- 1999. 05. Designatd as venture company (SMBA)
- 2000. 01. Acquired S Mark(Korea Occupational Safety and Health Agency)
- 2001. 01. Developed electric dust collector E/P CLEANER
- 2002. 05. Awarded of model SME commendation from SMBA
- 2004. 11. Awarded of Development of New Technology from MOCIE
- 2005. 06. Selected the world best item of locknut & power link from MOCIE
- 2005. 10. Certificated the ISO 14001
- 2007. 06. Selected the world best item of locknut & power link from MOCIE
- 2007. 10. Selected the INNO-BIZ from SBA
- 2008. 04. Acquired CE mark (EP Collector)
- 2008. 04. Acquired CE mark (Dust Cleaner)
- 2009. 02. Certificated the ISO 14001
- 2010. 08. Opened the Osaka office in Japan
- 2011. 03. Opened the Shanghai office in China
- 2012. 05. Opened the Taiwan office
- 2012. 12. Awarded Ceremony tower of 3 million export from MOCIE
- 2013. 06. Factory Expansion(1,652m²)
- 2014. 03. Established YHBECO Co.,Ltd
- 2014. 05. Opened Iksan Factory
- 2014. 06. Opened India/Vietnam Office
- 2015. 10. Acquired UL Mark
- 2016. 05. Awarded the President's Commendation for achievement in small business
- 2016. 10. Developed washable Mist Cleaner
- 2017. 01. Opened India Office
- 2017. 10. Broadcasted TV ad for celebrating 30 years anniversary



- **Main Office / Factory**
Rm 501, Daerung Techno Town 12th, 14,
Gasandigital2-ro, Geumcheon-gu, Seoul,
Korea
- **Gwangju Factory**
74 Hanamsandan 7 road,Gwangsan-Gu,
Gwangju City, Korea
- **Iksan Factory**
41, Seogam-ro, 1-gil Iksan-city,
Jeollabuk-do Korea



Mist Efficiency Testing System (Made in Japan)

Lock Nut & Power Link

OHM オーム電機株式会社
OHM ELECTRIC
일본 오-므전기 OEM수출



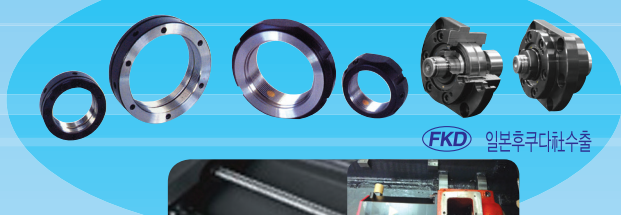
Mist Cleaner 집진기 YMC TYPE



SERVO MOTOR용 ELEMENT
SWLE300TYPE



BALL SCREW용 NUT(SLN, YAN TYPE)



FKD 일본후쿠다社수출

COOLANT GUN



클램트건 배관라인

공작기계
필수
설치품

SPINDEL용 NUT(ZM, ZMV, SLN, SWLN)

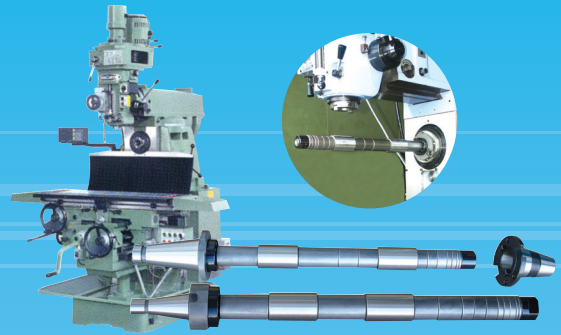


작업자의 편의성과 제품의 내구성을 갖춘 명품 생산으로
세계인이 애용하는 환경친화적 제품을 만들어 가는 것은
YHB최고의 가치입니다.

Green Factory

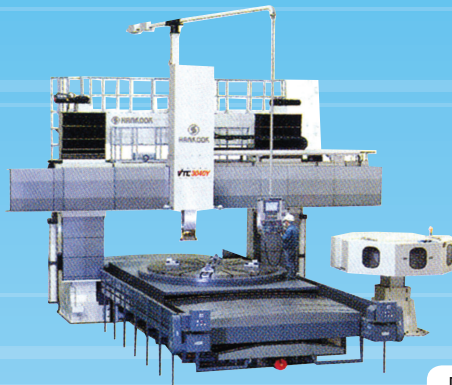


미스트크리너 YPM TYPE



밀링 LONG ARBOR

CNC선반, CNC밀링, 머시닝센터
 탭핑머신, 연삭기, 흡핑머신,
 플래너밀러 등 공작기계 요소부품 및
 환경개선 장비용으로
 국내·외 우수업체에 공급중



더스트 집진기 YDC TYPE



Mist Cleaner 집진기 YMC TYPE



소형전기 집진기

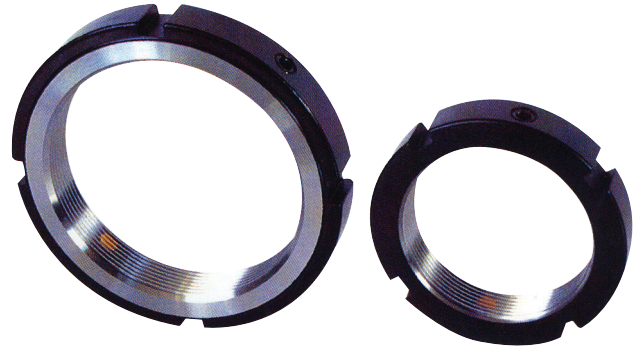


LOCK NUT ZM Type

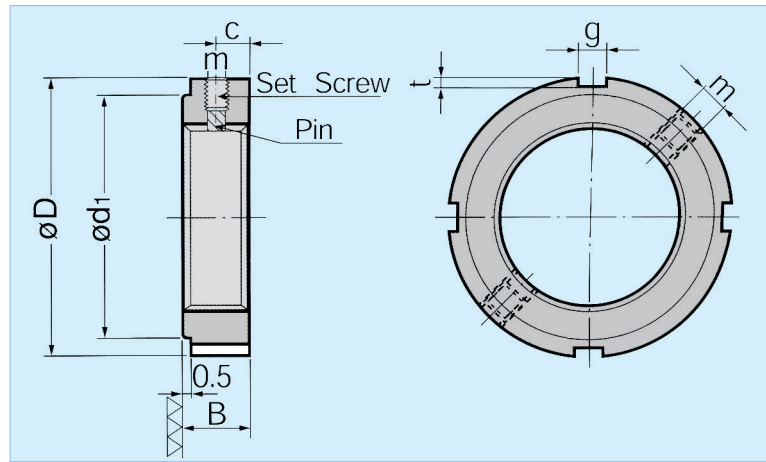


Features

- Material : DIN C45, JIS S45C, KS SM45C
- Hardness : HRC 20~25
- Nut Grade : Precision class
- Squariness of Nut Face : $\pm 0.002\sim 0.015$



1. Keeps a good balance thanks to the equal interval fluting of lock pin and hook spanner slots.
2. Because improving the smoothness and flatness through the lapping process it is fit for the shaft built up which requires a high fixing degree.



Dimensions (mm)

PART NO.	THREAD & PITCH	Dimensions							Axial Load (KN)	Set Screws (Nm)	Weight (g)
		ø D	B	g	t	ø d1	c	m			
ZM 8	M 8 × 0.75	16	8	3	2	12	4	M4	18	2	7
ZM 10	M 10 × 1	18	8	3	2	14	4	M4	22	3.5	9
ZM 12	M 12 × 1	22	8	3	3	16	4	M4	26	3.5	13
ZM 15	M 15 × 1	25	8	3	3	19	4	M4	33	3.5	17
ZM 17	M 17 × 1	28	10	4	3	21	5	M5	49	4.5	25
ZM 20	M 20 × 1	32	10	4	3	25	5	M5	55	4.5	33
ZM 25	M 25 × 1.5	38	12	5	3	31	6	M6	87	8	54
ZM 30	M 30 × 1.5	45	12	5	3	38	6	M6	110	8	77
ZM 35	M 35 × 1.5	52	12	5	3	45	6	M6	120	8	103
ZM 40	M 40 × 1.5	58	14	6	3	50	7	M6	150	8	143
ZM 45	M 45 × 1.5	65	14	6	3	56	7	M6	170	8	180
ZM 50	M 50 × 1.5	70	14	6	3	61	7	M6	180	8	198
ZM 55	M 55 × 2	75	16	7	4	66	8	M6	250	8	244
ZM 60	M 60 × 2	80	16	7	4	70	8	M6	270	8	263
ZM 65	M 65 × 2	85	16	7	4	76	8	M6	290	8	285
ZM 70	M 70 × 2	92	18	8	4	82	9	M8	350	18	378
ZM 75	M 75 × 2	98	18	8	4	87	9	M8	370	18	425
ZM 80	M 80 × 2	105	18	8	4	92	9	M8	390	18	495
ZM 85	M 85 × 2	110	18	8	4	99	9	M8	400	18	525
ZM 90	M 90 × 2	120	20	10	4	105	10	M8	470	18	753
ZM 95	M 95 × 2	125	20	10	4	110	10	M8	490	18	789
ZM 100	M 100 × 2	130	20	10	4	116	10	M8	510	18	830
ZM 105	M 105 × 2	140	22	12	5	122	11	M10	560	35	1,120
ZM 110	M 110 × 2	145	22	12	5	129	11	M10	600	35	1,170
ZM 120	M 120 × 2	155	24	12	5	136	12	M10	710	35	1,370
ZM 130	M 130 × 2	165	24	12	5	145	12	M10	760	35	1,490
ZM 140	M 140 × 2	180	26	14	6	156	13	M12	880	60	1,980
ZM 150	M 150 × 2	195	26	14	6	167	13	M12	930	60	2,410
ZM 160	M 160 × 3	210	28	16	7	178	14	M12	980	60	3,100
ZM 170	M 170 × 3	220	28	16	7	189	14	M12	1,130	60	3,280
ZM 180	M 180 × 3	230	30	18	8	199	15	M12	1,300	60	3,670
ZM 190	M 190 × 3	240	30	18	8	210	15	M12	1,470	60	3,880
ZM 200	M 200 × 3	250	32	18	8	222	16	M12	1,600	60	4,350

LOCK NUT ZMV Type

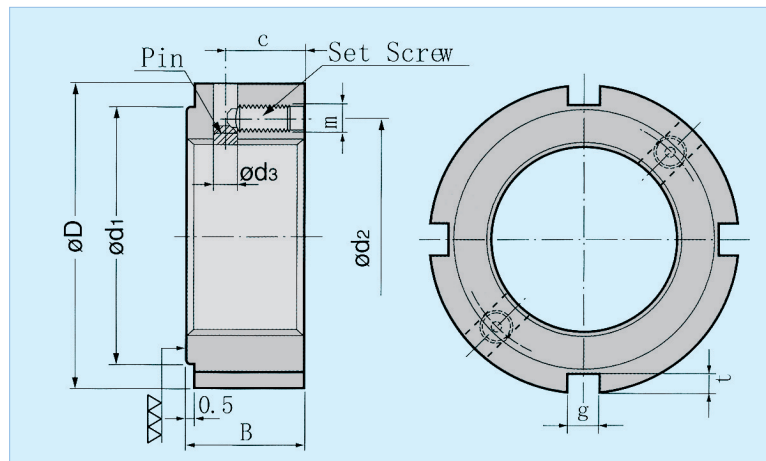
Features

- Material : DIN C45, JIS S45C, KS SM45C
- Hardness : HRC 20~25
- Nut Grade : Precision class
- Squariness of Nut Face : $\perp 0.002\sim 0.015$



Advantages

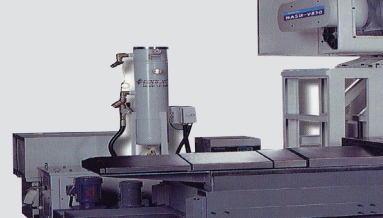
Adapt it when it is impossible to build up toward circumference direction



Dimensions (mm)

PART NO.	THREAD & PITCH	Dimensions									Axial Load (KN)	Set Screws (Nm)	Weight (g)
		Ø D	B	g	t	Ø d1	Ø d2	Ø d3	c	m			
ZMV 17	M 17 × 1	28	15	4	2.5	21	22.5	3.3	10	M4	49	3.5	38
ZMV 20	M 20 × 1	32	15	4	3	25	26	3.3	10	M4	55	3.5	49
ZMV 25	M 25 × 1.5	38	17	5	3	31	31.5	4.2	11	M5	87	4.5	76
ZMV 30	M 30 × 1.5	45	17	5	3	38	37.5	4.2	11	M5	110	4.5	107
ZMV 35	M 35 × 1.5	52	17	5	3	45	43.5	4.2	11	M5	120	4.5	144
ZMV 40	M 40 × 1.5	58	19	6	3	50	49	5	12	M6	150	8	191
ZMV 45	M 45 × 1.5	65	19	6	3	56	55	5	12	M6	170	8	241
ZMV 50	M 50 × 1.5	70	19	6	3	61	60	5	12	M6	180	8	268
ZMV 55	M 55 × 2	75	21	7	4	66	65	5	13	M6	250	8	318
ZMV 60	M 60 × 2	80	21	7	4	70	70	5	13	M6	270	8	344
ZMV 65	M 65 × 2	85	21	7	4	76	75	5	13	M6	290	8	370
ZMV 70	M 70 × 2	92	23	8	4	82	81	6.2	14	M8	350	18	480
ZMV 75	M 75 × 2	98	23	8	4	87	87	6.2	14	M8	370	18	540
ZMV 80	M 80 × 2	105	23	8	4	92	93	6.2	14	M8	390	18	632
ZMV 85	M 85 × 2	110	23	8	4	99	98	6.2	14	M8	400	18	666
ZMV 90	M 90 × 2	120	25	10	4	105	105	6.2	15	M8	470	18	936
ZMV 95	M 95 × 2	125	25	10	4	110	110	6.2	15	M8	490	18	983
ZMV 100	M 100 × 2	130	25	10	4	116	115	6.2	15	M8	510	18	1,030
ZMV 105	M 105 × 2	140	27	12	5	122	123	7.9	16	M10	560	35	1,370
ZMV 110	M 110 × 2	145	27	12	5	129	128	7.9	16	M10	600	35	1,430
ZMV 120	M 120 × 2	155	29	12	5	136	138	7.9	17	M10	710	35	1,660
ZMV 130	M 130 × 2	165	29	12	5	147	148	7.9	17	M10	760	35	1,790
ZMV 140	M 140 × 2	180	31	14	6	156	160	9.6	18	M12	880	60	2,870
ZMV 150	M 150 × 2	195	31	14	6	167	173	9.6	18	M12	930	60	3,000
ZMV 160	M 160 × 3	210	33	16	7	178	185	9.6	19	M12	980	60	3,680
ZMV 170	M 170 × 3	220	33	16	7	189	195	9.6	19	M12	1,130	60	3,860
ZMV 180	M 180 × 3	230	35	18	8	199	205	9.6	20	M12	1,300	60	4,280
ZMV 190	M 190 × 3	240	35	18	8	210	215	9.6	20	M12	1,470	60	4,500
ZMV 200	M 200 × 3	250	37	18	8	222	225	9.6	21	M12	1,600	60	4,980

LOCK NUT YZM Type

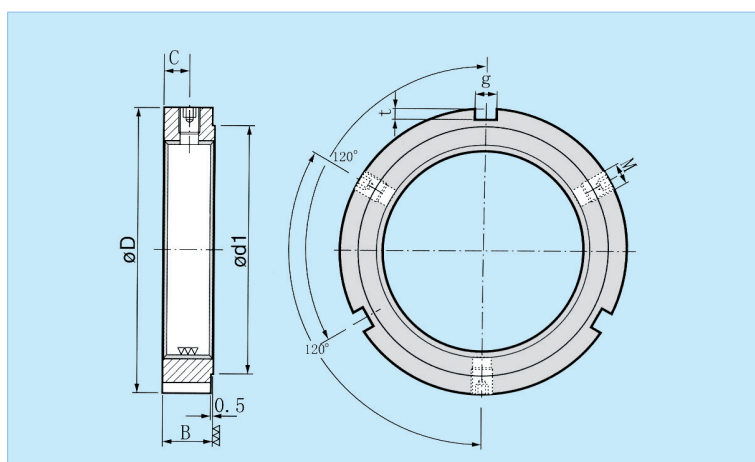


Features

- Material : DIN C45, JIS S45C, KS SM45C
- Hardness : HRC 20~25
- Nut Grade : Precision class
- Squariness of Nut Face : $\perp 0.002\sim 0.015$

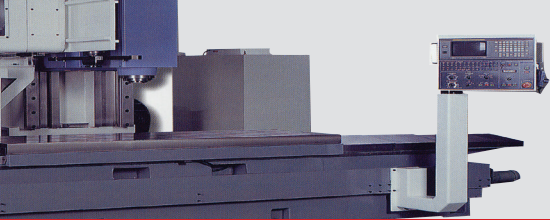
Advantages

1. Three locking pins located in equal intervals enable the nut to be assembled with the shaft at an appropriate angle and adjust the deviation properly.
2. No need for a lock washer or fluting of shaft key.



Dimensions (mm)

PART NO.	THREAD & PITCH	Dimensions							Axial Load (KN)	Set Screws (Nm)	Weight (g)
		ø D	B	g	t	ø d1	c	m			
YZM 12	M 12 × 1.0	22	8	3	3	16	4	M4	26	3.5	15
YZM 15	M 15 × 1.0	25	8	3	3	19	4	M4	33	3.5	17
YZM 17	M 17 × 1.0	28	10	4	3	21	5	M5	49	4.5	25
YZM 20	M 20 × 1.0	32	10	4	3	25	5	M5	55	4.5	32
YZM 25	M 25 × 1.5	38	12	5	3	31	6	M6	87	8	54
YZM 30	M 30 × 1.5	45	12	5	3	38	6	M6	110	8	77
YZM 35	M 35 × 1.5	52	12	5	3	45	6	M6	120	8	103
YZM 40	M 40 × 1.5	58	14	6	3	50	7	M6	150	8	145
YZM 45	M 45 × 1.5	65	14	6	3	56	7	M6	170	8	182
YZM 50	M 50 × 1.5	70	14	6	3	61	7	M6	180	8	197
YZM 55	M 55 × 2.0	75	16	7	4	66	8	M6	250	8	247
YZM 60	M 60 × 2.0	80	16	7	4	70	8	M6	270	8	267
YZM 65	M 65 × 2.0	85	16	7	4	76	8	M6	290	8	287
YZM 70	M 70 × 2.0	92	18	8	4	82	9	M8	350	18	383
YZM 75	M 75 × 2.0	98	18	8	4	87	9	M8	370	18	428
YZM 80	M 80 × 2.0	105	18	8	4	92	9	M8	390	18	497
YZM 85	M 85 × 2.0	110	18	8	4	99	9	M8	400	18	526
YZM 90	M 90 × 2.0	120	20	10	4	105	10	M8	470	18	756
YZM 95	M 95 × 2.0	125	20	10	4	110	10	M8	490	18	795
YZM 100	M 100 × 2.0	130	20	10	4	116	10	M8	510	18	835
YZM 105	M 105 × 2.0	140	22	12	5	122	11	M10	560	35	1,130
YZM 110	M 110 × 2.0	145	22	12	5	129	11	M10	600	35	1,180
YZM 120	M 120 × 2.0	155	24	12	5	136	12	M10	710	35	1,400
YZM 130	M 130 × 2.0	165	24	12	5	145	12	M10	760	35	1,490
YZM 140	M 140 × 2.0	180	26	14	6	156	13	M12	880	60	2,010
YZM 150	M 150 × 2.0	195	26	14	6	167	13	M12	930	60	2,420
YZM 160	M 160 × 3.0	210	28	16	7	178	14	M12	980	60	3,120
YZM 170	M 170 × 3.0	220	28	16	7	189	14	M12	1,130	60	3,300
YZM 180	M 180 × 3.0	230	30	18	8	199	15	M12	1,300	60	3,710
YZM 190	M 190 × 3.0	240	30	18	8	210	15	M12	1,470	60	4,010
YZM 200	M 200 × 3.0	250	32	18	8	222	16	M12	1,600	60	4,360



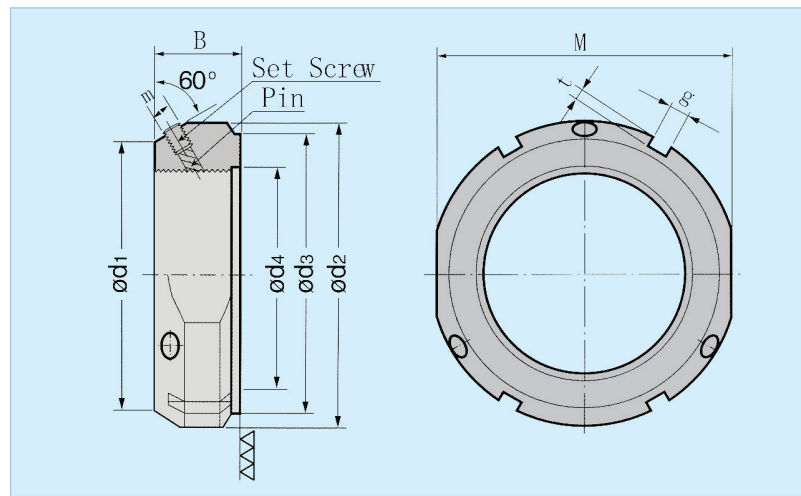
LOCK NUT SLN Type

Features

- Material : DIN C45, JIS S45C, KS SM45C
- Hardness : HRC 20~25
- Nut Grade : Precision class
- Squariness of Nut Face : $\perp 0.002\sim 0.015$

Advantages

1. Three locking pins located in equal intervals enable the nut to be assembled with the shaft at an appropriate angle and adjust the deviation properly.
2. No need for a lock washer or fluting of shaft key.



Dimensions (mm)

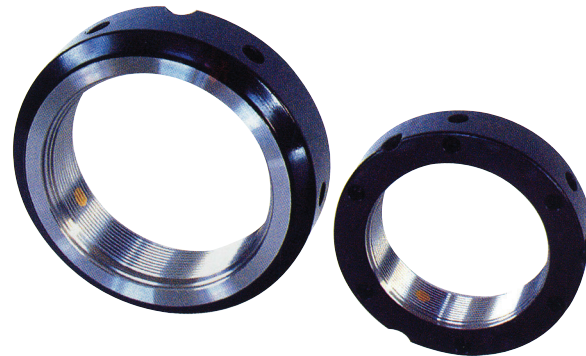
PART NO.	THREAD&PITCH	Dimensions										Axial Load (KN)	Weight (g)
		ϕd_1	ϕd_2	ϕd_3	ϕd_4	B	g	t	M	Set Screws	Torque(Nm)		
SLN 02	M 15 × 1	26	33	25	16	16	4	2.5	30	M5	4.5	60	62
SLN 03	M 17 × 1	29	37	30	18	18	5	2.5	34	M6	8	80	91
SLN 04	M 20 × 1	32	40	32	21	18	5	2.5	36	M6	8	90	100
SLN 05	M 25 × 1.5	36	44	36	26	20	5	2.5	41	M6	8	130	127
SLN 06	M 30 × 1.5	41	49	41	31	20	5	2.5	46	M6	8	160	146
SLN 07	M 35 × 1.5	46	54	46	36	22	5	2.5	50	M6	8	190	185
SLN 08	M 40 × 1.5	56	65	56	41	22	6	3	60	M6	8	210	300
SLN 09	M 45 × 1.5	61	70	61	47	22	6	3	65	M6	8	240	320
SLN 10	M 50 × 1.5	65	75	65	51	25	7	3	70	M6	8	300	394
SLN 11	M 55 × 2	74	85	75	57	25	7	3	80	M8	18	340	530
SLN 12	M 60 × 2	78	90	79	62	26	8	4	85	M8	18	380	584
SLN 13	M 65 × 2	83	95	84	67	28	8	4	90	M8	18	460	682
SLN 14	M 70 × 2	88	100	89	72	28	8	4	95	M8	18	490	728
SLN 15	M 75 × 2	93	105	94	77	28	8	4	100	M8	18	520	773
SLN 16	M 80 × 2	98	110	96	82	32	8	4	100	M8	18	620	900
SLN 17	M 85 × 2	107	120	106	87	32	10	4	110	M10	35	650	1,140
SLN 18	M 90 × 2	112	125	111	92	32	10	4	115	M10	35	680	1,220
SLN 19	M 95 × 2	117	130	116	97	32	10	4	120	M10	35	710	1,270
SLN 20	M 100 × 2	122	135	121	102	32	10	4	125	M10	35	740	1,330
SLN 22	M 110 × 2	132	145	130	112	32	10	4	135	M10	35	800	1,460
SLN 24	M 120 × 2	142	155	140	122	32	10	4	145	M10	35	860	1,560
SLN 26	M 130 × 2	152	165	150	132	32	12	5	155	M10	35	920	1,670
SLN 28	M 140 × 2	162	175	160	142	32	14	6	165	M10	35	980	1,760
SLN 30	M 150 × 2	172	185	170	152	32	14	6	175	M10	35	1,040	1,890
SLN 32	M 160 × 3	182	195	180	162	32	14	6	-	M10	35	1,100	2,050
SLN 34	M 170 × 3	192	205	190	172	32	14	6	-	M10	35	1,160	2,170
SLN 36	M 180 × 3	202	215	200	182	32	16	7	-	M10	35	1,220	2,330
SLN 38	M 190 × 3	212	225	210	192	32	16	7	-	M10	35	1,280	2,370
SLN 40	M 200 × 3	222	235	220	202	32	18	8	-	M10	35	1,340	2,550

LOCK NUT SWLN Type



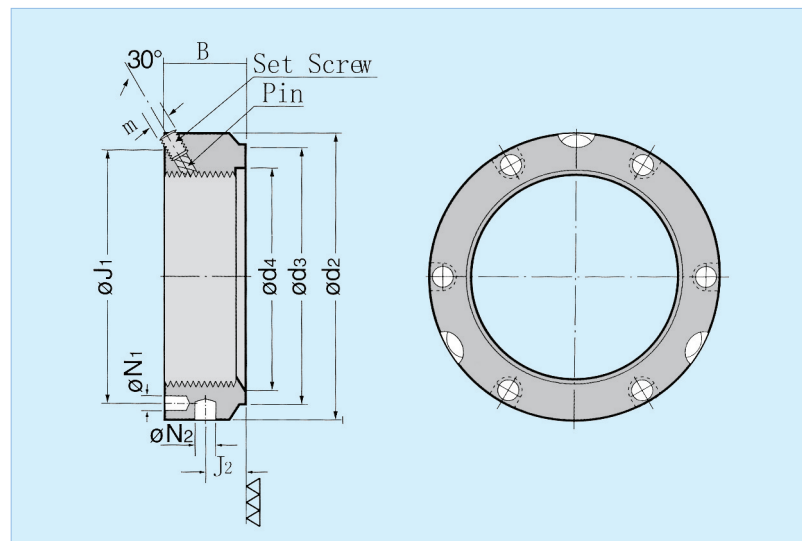
Features

- Material : DIN C45, JIS S45C, KS SM45C
- Hardness : HRC 20~25
- Nut Grade : Precision class
- Squareness of Nut Face : $\perp 0,002\sim 0,015$



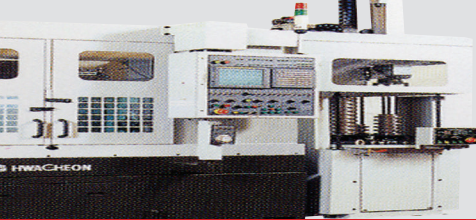
Advantages

1. Able to adjust deviation by erecting a nut with locking pins located at three equal intervals.
2. No need for a lock washer or fluting of shaft key.



Dimensions (mm)

PART NO.	THREAD & PITCH	Dimensions										Axial Load (KN)	Weight (g)
		ød2	ød3	ød4	B	øJ1	J2	øN1	øN2	m	Torque(Nm)		
SWLN04	M 20 × 1,0	38	30	21	18	29	10	4,3	4	M6	8	110	95
SWLN05	M 25 × 1,5	42	35	26	20	32,5	11	4,3	4	M6	8	130	121
SWLN06	M 30 × 1,5	48	40	31	20	40,5	11	4,3	5	M6	8	160	147
SWLN07	M 35 × 1,5	53	47	36	20	45,5	11	4,3	5	M6	8	190	174
SWLN08	M 40 × 1,5	58	52	41	22	50,5	12	4,3	5	M6	8	210	219
SWLN09	M 45 × 1,5	68	58	46	22	58	12	4,3	6	M6	8	240	311
SWLN10	M 50 × 1,5	70	63	51	24	61,5	13	4,3	6	M6	8	300	325
SWLN11	M 55 × 1,5	75	70	57	24	66,5	13	4,3	6	M6	8	340	356
SWLN12	M 60 × 1,5	84	75	62	24	74,5	13	5,3	6	M6	8	380	466
SWLN13	M 65 × 1,5	88	80	67	25	78,5	13	5,3	6	M6	8	460	498
SWLN14	M 70 × 1,5	95	86	72	26	85	14	5,3	8	M8	18	490	592
SWLN15	M 75 × 1,5	100	91	77	26	88	13	6,4	8	M8	18	520	627
SWLN16	M 80 × 2	110	97	82	30	95	16	6,4	8	M8	18	620	953
SWLN17	M 85 × 2	115	102	87	32	100	17	6,4	8	M10	35	650	1,080
SWLN18	M 90 × 2	120	110	92	32	108	17	6,4	8	M10	35	680	1,150
SWLN19	M 95 × 2	125	114	97	32	113	17	6,4	8	M10	35	710	1,200
SWLN20	M 100 × 2	130	120	102	32	118	17	6,4	8	M10	35	740	1,280
SWLN22	M 110 × 2	140	132	112	32	128	17	6,4	8	M10	35	800	1,400
SWLN24	M 120 × 2	155	142	122	32	140	17	6,4	8	M10	35	860	1,760
SWLN26	M 130 × 3	165	156	132	32	153	17	6,4	8	M10	35	920	1,960
SWLN28	M 140 × 3	180	166	142	32	165	17	6,4	10	M10	35	980	2,360
SWLN30	M 150 × 3	190	180	152	32	175	17	6,4	10	M10	35	1,040	2,580
SWLN32	M 160 × 3	205	190	162	32	185	17	8,4	10	M10	35	1,100	3,040
SWLN34	M 170 × 3	215	205	172	32	195	17	8,4	10	M10	35	1,160	3,300
SWLN36	M 180 × 3	230	215	182	32	210	17	8,4	10	M10	35	1,220	3,830
SWLN38	M 190 × 3	240	225	192	32	224	17	8,4	10	M10	35	1,280	4,000
SWLN40	M 200 × 3	245	237	202	32	229	17	8,4	10	M10	35	1,340	3,860



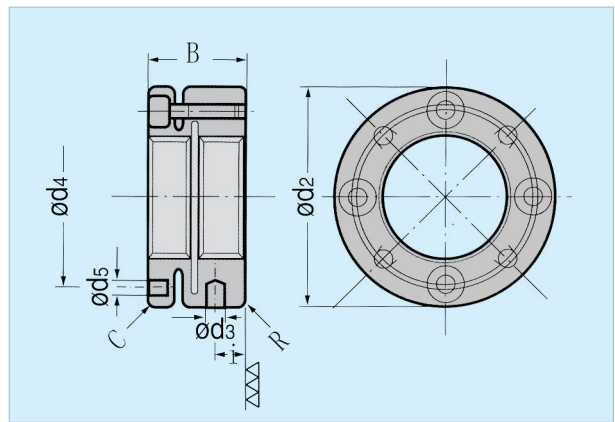
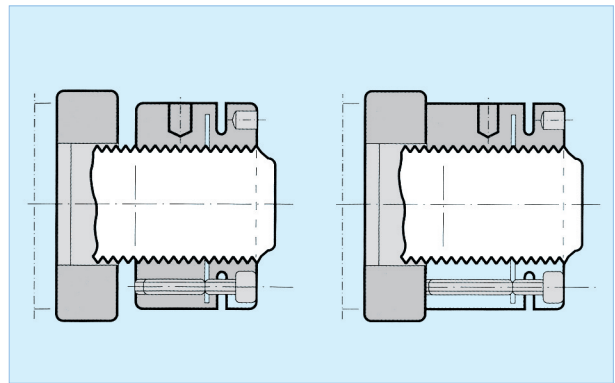
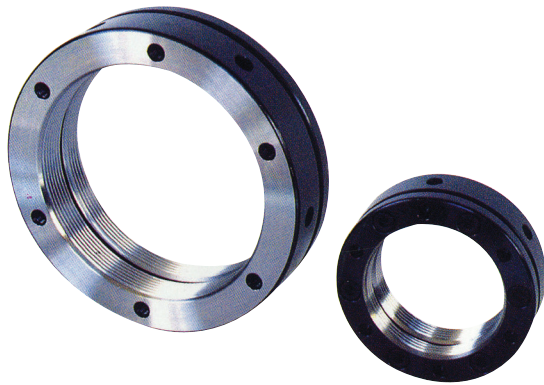
LOCK NUT YAN Type

Features

- Material : JIS SCM440
- Hardness : HB 201~280
- Nut Grade : Precision class
- Squariness of Nut Face : $\perp 0.002\sim 0.015$

Advantages

1. Preload and tension can be adjusted.
2. Tolerable with vibration.(shake, oscillation)
3. Locking washers, slots in the shaft are not needed.



Dimensions (mm)

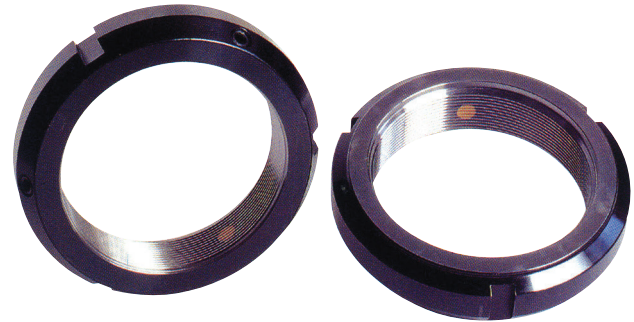
PART NO.	Dimensions						Holes	Tight bolt			Release Torque (kgf-cm)	Allowable Axial Load (KN)	Weight (g)
	ϕd_2	ϕd_3	ϕd_4	ϕd_5	B	i		Thread & Length	Bolts	Torque(kgf.m)			
YAN 16 × 1.5	34	4	24.5	4.3	18	4.5	4	M4 × 12	4	0.29	340	22	77
YAN 18 × 1.5	36	4	26.5	4.3	18	4.5	4	M4 × 12	4	0.29	370	24	83
YAN 20 × 1.5	40	4	30.5	4.3	18	4.5	4	M4 × 12	4	0.29	400	27	105
YAN 22 × 1.5	40	4	30.5	4.3	18	4.5	4	M4 × 12	4	0.29	420	30	95
YAN 24 × 1.5	42	4	32.5	4.3	18	4.5	4	M4 × 12	4	0.29	440	33	103
YAN 25 × 1.5	45	5	36.5	4.3	20	6.0	4	M4 × 14	4	0.29	450	45	139
YAN 28 × 1.5	46	5	38.5	4.3	20	6.0	4	M4 × 14	4	0.29	480	50	130
YAN 30 × 1.5	48	5	40.5	4.3	20	6.0	4	M4 × 14	4	0.29	500	55	140
YAN 32 × 1.5	50	5	42.5	4.3	22	7	4	M4 × 16	4	0.29	520	61	164
YAN 35 × 1.5	53	5	45.5	4.3	22	7	4	M4 × 16	4	0.29	550	62	177
YAN 38 × 1.5	58	5	48.5	4.3	22	7	4	M4 × 16	4	0.29	580	72	218
YAN 40 × 1.5	58	5	50.5	4.3	22	7	4	M4 × 16	4	0.29	600	63	198
YAN 42 × 1.5	60	5	52.5	4.3	22	7	4	M4 × 16	4	0.29	620	63	207
YAN 45 × 1.5	68	6	58	4.3	22	6.0	6	M4 × 16	6	0.29	1,070	80	290
YAN 48 × 1.5	68	6	59.5	4.3	25	9	6	M4 × 18	6	0.29	1,180	90	298
YAN 50 × 1.5	70	6	61.5	4.3	25	9	6	M4 × 18	6	0.29	1,250	90	310
YAN 52 × 1.5	72	6	63.5	4.3	25	9	6	M4 × 18	6	0.29	1,300	90	320
YAN 55 × 1.5	75	6	66.5	4.3	25	9	6	M4 × 18	6	0.29	1,410	90	336
YAN 58 × 1.5	82	6	72.5	5.3	26	9	6	M5 × 18	6	0.6	2,100	158	456
YAN 60 × 1.5	84	6	74.5	5.3	26	9	6	M5 × 18	6	0.6	2,200	159	471
YAN 62 × 1.5	86	6	76.5	5.3	28	10.5	6	M5 × 20	6	0.6	2,310	180	528
YAN 65 × 1.5	88	6	78.5	5.3	28	10.5	6	M5 × 20	6	0.6	2,470	170	521
YAN 68 × 1.5	95	8	83	5.3	28	9.5	6	M5 × 20	6	0.6	2,620	215	653
YAN 70 × 1.5	95	8	85	5.3	28	9.5	6	M5 × 20	6	0.6	2,730	200	607
YAN 72 × 1.5	98	8	86	6.4	28	8.5	6	M6 × 20	6	1.0	3,640	158	619
YAN 75 × 1.5	100	8	88	6.4	28	8.5	6	M6 × 20	6	1.0	3,750	200	620
YAN 80 × 2.0	110	8	95	6.4	32	11	6	M6 × 22	6	1.0	3,900	169	968
YAN 85 × 2.0	115	8	100	6.4	32	11	6	M6 × 22	6	1.0	4,000	167	1,020
YAN 90 × 2.0	120	8	108	6.4	32	11	6	M6 × 22	6	1.0	4,200	255	1,070
YAN 95 × 2.0	125	8	113	6.4	32	11	6	M6 × 22	6	1.0	4,350	262	1,120
YAN 100 × 2.0	130	8	118	6.4	32	11	6	M6 × 22	6	1.0	4,500	268	1,180
YAN 105 × 2.0	135	8	123	6.4	32	11	6	M6 × 22	6	1.0	4,650	270	1,230
YAN 110 × 2.0	140	8	128	6.4	32	11	6	M6 × 22	6	1.0	4,800	280	1,280
YAN 115 × 2.0	145	8	133	6.4	36	13	6	M6 × 25	6	1.0	4,950	325	1,540
YAN 120 × 2.0	155	8	140	6.4	36	13	6	M6 × 25	6	1.0	5,100	403	1,910
YAN 125 × 2.0	160	8	148	6.4	36	13	6	M6 × 25	6	1.0	5,250	410	1,980
YAN 130 × 3.0	165	8	153	6.4	36	13	6	M6 × 25	6	1.0	5,400	400	2,980
YAN 140 × 3.0	180	10	165	6.4	36	12	8	M6 × 25	8	1.0	5,700	472	2,510
YAN 150 × 3.0	190	10	175	6.4	36	12	8	M6 × 25	8	1.0	6,000	485	2,680
YAN 160 × 3.0	205	10	185	8.4	40	14	8	M8 × 30	8	2.5	6,300	550	3,630
YAN 170 × 3.0	215	10	195	8.4	40	14	8	M8 × 30	8	2.5	6,650	555	3,840
YAN 180 × 3.0	230	10	210	8.4	40	14	8	M8 × 30	8	2.5	7,000	640	4,570
YAN 190 × 3.0	240	10	224	8.4	40	14	8	M8 × 30	8	2.5	7,300	650	4,790
YAN 200 × 3.0	245	10	229	8.4	40	14	8	M8 × 30	8	2.5	7,600	570	4,470

LOCK NUT YHB Type



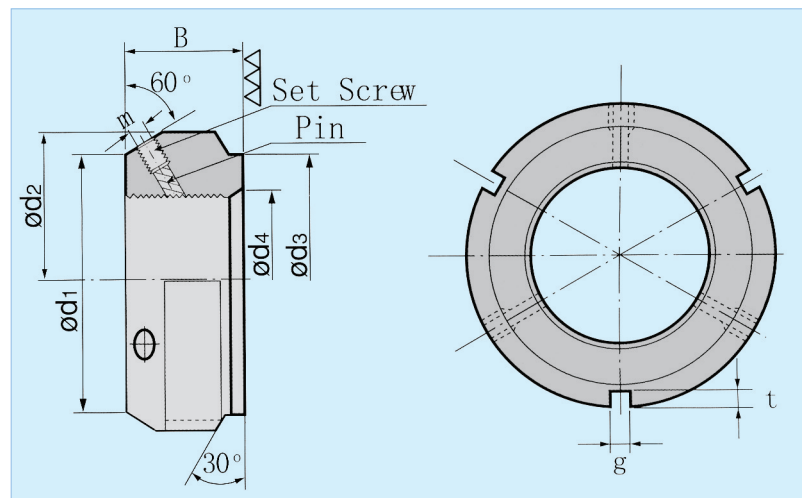
Features

- Material : DIN C45, JIS S45C, KS SM45C
- Hardness : HRC 20~25
- Nut Grade : Precision class
- Squariness of Nut Face : $\pm 0.002\sim 0.015$



Advantages

1. Thanks to enhanced flatness and roughness of reference plane by lapping work, YHB type fits in shaft build-up which requires high fixing degree.
2. Three locking pins located in equal intervals enable the nut to be assembled with the shaft exactly at the appropriate angle and adjust the deviation properly.
3. Keeps a good balance thanks to the equal interval fluting of lock pin and hook spanner.



Dimensions (mm)

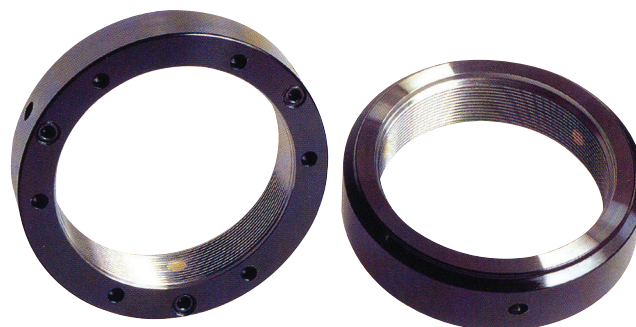
PARTNO	THREAD&PITCH	Dimensions								Axial Load (KN)	Set Screws (Nm)	Weight (g)
		ød1	ød2	ød3	ød4	B	g	t	m			
YHB 02	M 15 × 1	26	33	25	16	16	4	2.5	M5	60	4,5	64
YHB 03	M 17 × 1	29	37	30	18	18	5	2.5	M6	80	8	94
YHB 04	M 20 × 1	32	40	32	21	18	5	2.5	M6	90	8	103
YHB 05	M 25 × 1,5	36	44	36	26	20	5	2.5	M6	130	8	130
YHB 06	M 30 × 1,5	41	49	41	32	20	5	2.5	M6	160	8	149
YHB 07	M 35 × 1,5	46	54	46	38	22	5	2.5	M6	190	8	188
YHB 08	M 40 × 1,5	56	65	56	42	22	6	3	M6	210	8	299
YHB 09	M 45 × 1,5	61	70	61	48	22	6	3	M6	240	8	327
YHB 10	M 50 × 1,5	65	75	65	52	25	7	3	M6	300	8	404
YHB 11	M 55 × 2	74	85	75	58	25	7	3	M8	340	18	551
YHB 12	M 60 × 2	78	90	79	62	26	8	4	M8	380	18	599
YHB 13	M 65 × 2	83	95	84	68	28	8	4	M8	460	18	698
YHB 14	M 70 × 2	88	100	89	72	28	8	4	M8	490	18	746
YHB 15	M 75 × 2	93	105	94	77	28	8	4	M8	520	18	953
YHB 16	M 80 × 2	98	110	96	83	32	8	4	M8	620	18	1,200
YHB 17	M 85 × 2	107	120	106	88	32	10	4	M10	650	35	1,270
YHB 18	M 90 × 2	112	125	111	93	32	10	4	M10	680	35	1,320
YHB 19	M 95 × 2	117	130	116	98	32	10	4	M10	710	35	1,380
YHB 20	M 100 × 2	122	135	121	103	32	10	4	M10	740	35	1,580
YHB 22	M 110 × 2	132	145	130	112	32	10	4	M10	800	35	1,620
YHB 24	M 120 × 2	142	155	140	122	32	10	4	M10	860	35	1,730
YHB 26	M 130 × 2	152	165	150	132	32	12	5	M10	920	35	1,840
YHB 28	M 140 × 2	162	175	160	142	32	14	6	M10	980	35	1,970
YHB 30	M 150 × 2	172	185	170	152	32	14	6	M10	1,040	35	2,090
YHB 32	M 160 × 2	182	195	180	162	32	14	6	M10	1,100	35	2,210
YHB 34	M 170 × 2	192	205	190	172	32	14	6	M10	1,160	35	2,320
YHB 36	M 180 × 2	202	215	200	182	32	16	7	M10	1,220	35	2,530
YHB 40	M 200 × 2	222	235	220	202	32	18	8	M10	1,340	35	



LOCK NUT HB Type

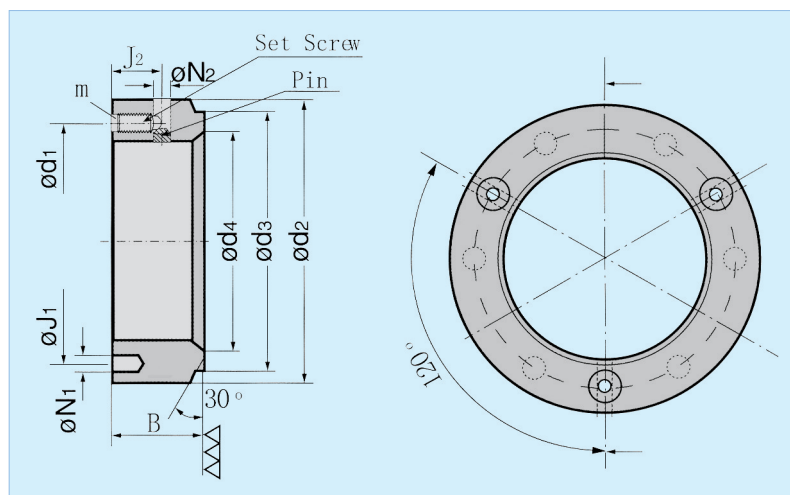
Features

- Material : DIN C45, JIS S45C, KS SM45C
- Hardness : HRC 20~25
- Nut Grade : Precision class
- Squariness of Nut Face : $\perp 0.002\sim 0.015$



Advantages

1. Thanks to enhanced flatness and roughness of reference plane by lapping work, YHB type fits in shaft build-up which requires high fixing degree.
2. Three locking pins located in equal intervals enable the nut to be assembled with the shaft exactly at the appropriate angle and adjust the deviation properly.
3. Keeps a good balance thanks to the equal interval fluting of lock pin and hook spanner.



Dimensions (mm)

PARTNO	THREAD&PITCH	Dimensions											Axial Load (KN)	Set Screws (Nm)	Weight (g)
		ϕd_1	ϕd_2	ϕd_3	ϕd_4	B	ϕJ_1	J ₂	ϕN_1	ϕN_2	m				
HB 05	M 25 × 1.5	33.5	42	35	26	20	32.5	11	4.3	5	M6	130	8	123	
HB 06	M 30 × 1.5	39	48	40	32	20	40.5	11	4.3	5	M6	160	8	152	
HB 07	M 35 × 1.5	44	53	47	38	20	45.5	11	4.3	5	M6	190	8	174	
HB 08	M 40 × 1.5	49	58	52	42	22	50.5	12	4.3	5	M6	210	8	220	
HB 09	M 45 × 1.5	56.5	68	58	48	22	58	12	4.3	5	M6	240	8	313	
HB 10	M 50 × 1.5	60	70	63	52	24	61.5	12	4.3	5	M6	300	8	331	
HB 11	M 55 × 1.5	65	75	70	58	24	66.5	13	4.3	5	M6	340	8	362	
HB 12	M 60 × 1.5	72	84	75	62	24	74.5	13	5.3	5	M6	380	8	467	
HB 13	M 65 × 1.5	76	88	80	68	25	78.5	13	5.3	5	M6	460	8	501	
HB 14	M 70 × 1.5	83	95	86	72	26	85	14	5.3	7.9	M10	490	18	590	
HB 15	M 75 × 1.5	88	100	91	77	26	88	13	6.4	7.9	M10	520	18	624	
HB 16	M 80 × 2	96	110	97	83	30	95	16	6.4	7.9	M10	620	18	930	
HB 17	M 85 × 2	100	115	102	88	32	100	17	6.4	9.6	M12	650	35	1,080	
HB 18	M 90 × 2	105	120	110	93	32	108	17	6.4	9.6	M12	680	35	1,140	
HB 19	M 95 × 2	110	125	114	98	32	113	17	6.4	9.6	M12	710	35	1,200	
HB 20	M 100 × 2	115	130	120	103	32	118	17	6.4	9.6	M12	740	35	1,270	
HB 22	M 110 × 2	128	140	132	112	32	128	17	6.4	9.6	M12	800	35	1,400	
HB 24	M 120 × 2	138	155	142	122	32	140	17	6.4	9.6	M12	860	35	1,760	
HB 26	M 130 × 3	148	165	156	132	32	153	17	6.4	9.6	M12	920	35	1,950	
HB 28	M 140 × 3	160	180	166	142	32	165	17	6.4	9.6	M12	980	35	2,300	
HB 30	M 150 × 3	173	195	180	152	32	175	17	6.4	9.6	M12	1,040	35	2,500	
HB 32	M 160 × 3	182	205	190	162	32	185	17	8.4	9.6	M12	1,100	35	3,050	
HB 34	M 170 × 3	192	215	205	172	32	195	17	8.4	9.6	M12	1,160	35	3,280	
HB 36	M 180 × 3	205	230	215	182	32	210	17	8.4	9.6	M12	1,220	35	3,780	
HB 38	M 190 × 3	215	240	225	192	32	224	17	8.4	9.6	M12	1,280	35	4,030	
HB 40	M 200 × 3	223	245	237	202	32	229	17	8.4	9.6	M12	1,340	35	4,000	

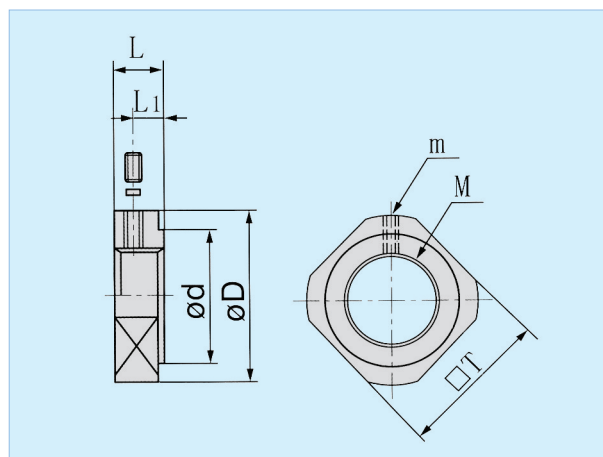
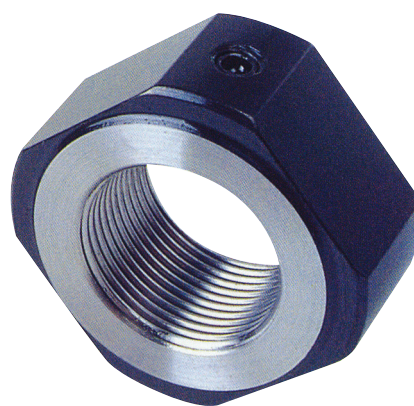
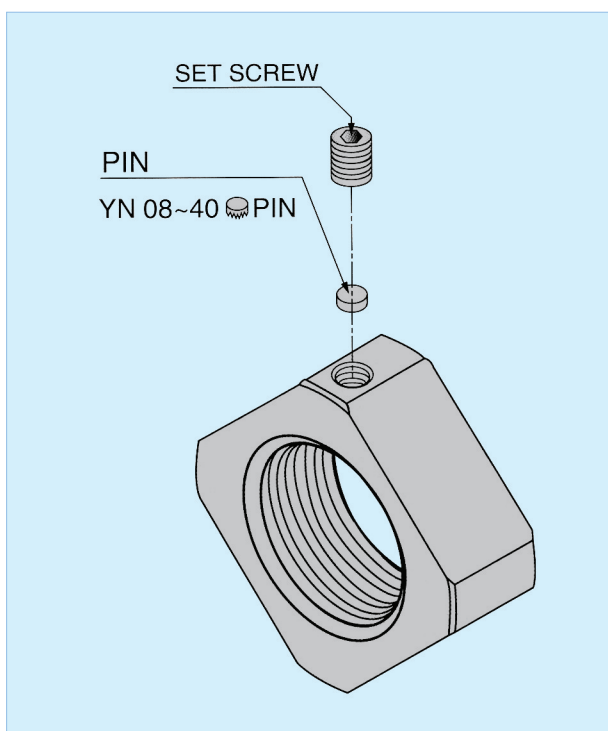
LOCK NUT YN Type



Features

- Material : DIN C45, JIS S45C, KS SM45C
- Hardness : HRC 20~25
- Nut Grade : Precision class
- Squariness of Nut Face : $\perp 0.002\sim 0.005$

YN is a suitable design for the low-load bearing supporter and is easy to be mount and dismount.



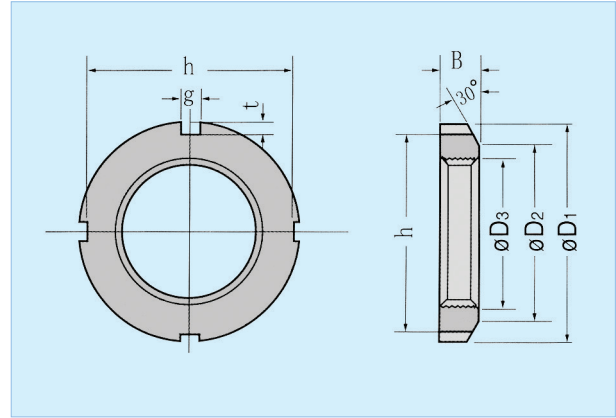
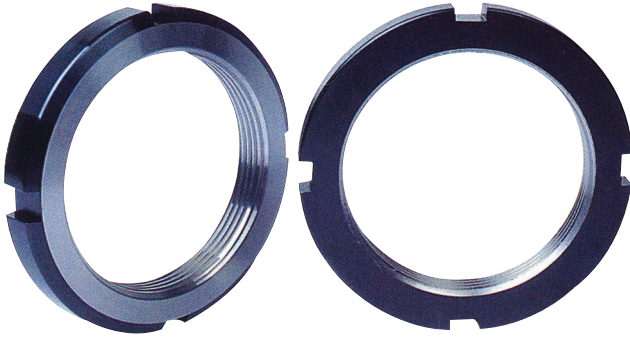
Dimensions (mm)

PARTNO	M	m	øD	ød	L	L ₁	T	Weight (g)
YN 08	M 8 × 1	M 3 × 0.5	17	13	6.5	4	14	7
YN 10	M 10 × 1	M 4 × 0.7	20	15	9	4.5	16	12
YN 12	M 12 × 1	M 4 × 0.7	22	17	9	4.5	19	15
YN 15	M 15 × 1	M 4 × 0.7	25	21	8	4	22	16
YN 17	M 17 × 1	M 4 × 0.7	30	25	13	6.5	26	40
YN 20	M 20 × 1	M 4 × 0.7	35	26	11	5.5	30	44
YN 25	M 25 × 1.5	M 5 × 0.8	43	33	15	7.5	35	81
YN 30	M 30 × 1.5	M 6 × 1.0	48	39	20	10	40	128
YN 35	M 35 × 1.5	M 8 × 1.25	60	46	21	10.5	50	231
YN 40	M 40 × 1.5	M 8 × 1.25	63	51	25	12.5	52	264

LOCK NUT AN Type

Features

- Material : DIN C45, JIS S45C, KS SM45C
- Nut Grade : Precision class



Dimensions (mm)

PARTNO	THREAD&PITCH	Dimensions							Weight (g)
		$\varnothing D_1$	$\varnothing D_2$	h	g	t	$\varnothing D_3$	B	
AN 00	M 10 × 0,75	18	13,5	14	3	2	10,5	4	4
AN 01	M 12 × 1	22	17	18	3	2	12,5	4	7
AN 02	M 15 × 1	25	21	21	4	2	15,5	5	10
AN 03	M 17 × 1	28	24	24	4	2	17,5	5	13
AN 04	M 20 × 1	32	26	28	4	2	20,5	6	20
AN 05	M 25 × 1,5	38	32	34	5	2	25,8	7	31
AN 06	M 30 × 1,5	45	38	41	5	2	30,8	7	44
AN 07	M 35 × 1,5	52	44	48	5	2	35,8	8	65
AN 08	M 40 × 1,5	58	50	53	6	2,5	40,8	9	90
AN 09	M 45 × 1,5	65	56	60	6	2,5	45,8	10	122
AN 10	M 50 × 1,5	70	61	65	6	2,5	50,8	11	152
AN 11	M 55 × 2	75	67	69	7	3	56	11	166
AN 12	M 60 × 2	80	73	74	7	3	61	11	179
AN 13	M 65 × 2	85	79	79	7	3	66	12	212
AN 14	M 70 × 2	92	85	85	8	3,5	71	12	243
AN 15	M 75 × 2	98	90	91	8	3,5	76	13	306
AN 16	M 80 × 2	105	95	98	8	3,5	81	15	407
AN 17	M 85 × 2	110	102	103	8	3,5	86	16	467
AN 18	M 90 × 2	120	108	112	10	4	91	16	597
AN 19	M 95 × 2	125	113	117	10	4	96	17	659
AN 20	M 100 × 2	130	120	122	10	4	101	18	727
AN 21	M 105 × 2	140	126	130	12	5	106	18	877
AN 22	M 110 × 2	145	133	135	12	5	111	19	987
AN 23	M 115 × 2	150	137	140	12	5	116	19	1,030
AN 24	M 120 × 2	155	138	145	12	5	121	20	1,150
AN 25	M 125 × 2	160	148	150	12	5	126	21	1,240
AN 26	M 130 × 2	165	149	155	12	5	131	21	1,270
AN 27	M 135 × 2	175	160	163	14	6	136	22	1,550
AN 28	M 140 × 2	180	160	168	14	6	141	22	1,610
AN 29	M 145 × 2	190	172	178	14	6	146	24	1,850
AN 30	M 150 × 2	195	171	183	14	6	151	24	1,940
AN 31	M 155 × 2	200	182	186	16	7	156,5	25	2,100
AN 32	M 160 × 3	210	182	196	16	7	161,5	25	2,390
AN 33	M 165 × 3	210	193	196	16	7	166,5	26	2,500
AN 34	M 170 × 3	220	193	206	16	7	171,5	26	2,840
AN 36	M 180 × 3	230	203	214	18	8	181,5	27	2,860
AN 38	M 190 × 3	240	214	224	18	8	191,5	28	3,300
AN 40	M 200 × 3	250	226	234	18	8	201,5	29	3,760