

INSTALLATION INSTRUCTIONS

SEEBURG

SELECT-O-MATIC LIBRARY, MODEL SL-2

LIBRARY BASE, MODEL BA-2

The Seeburg Select-O-Matic Library, Model SL-2 and Library Base, BA-2 are packed separately and require assembly after delivery.

Components included as part of the Select-O-Matic Library, SL-2 consist of:

Select-O-Matic Library Mechanism, Type 200S4-L6
Control Panel, Type CP2-L6
Signal Input and Cancel Cable Assembly, Part No. 600252
Auxiliary Panel Assembly, Part No. 600324 (Four Controls)

Components included as part of the Library Base, BA-2 consist of:

Power Amplifier, Type 18A1-16
Loud Speaker, Part No. 502333
Twelve Record Albums for storage of 144 Records.

After unpacking, observe condition of equipment, and if damaged, immediately file a claim report with the carrier.

Before placing the equipment into operation, the Cabinet Base must be leveled so that all four corners are supported.

Remove the backs of both units and proceed as follows:

The six glides on the underside of the SL-1 Cabinet must be turned until they are recessed into the cabinet base.

1. Place the Library Unit on top of the Base Unit.
2. Line up the three holes, two in the back rail and one underneath the Library mechanism to the right of center as viewed from the rear, and install the three 5" carriage bolts furnished.
3. Securely tighten the two rear bolts and tighten the front bolt just enough to prevent excessive strain on the bottom and top panels of both units.

WARNING: These bolts must be installed and tightened as per above instructions, to avoid acoustical feedback. If this is not done, oscillations may be set up which will impair the program tone quality.

4. Interconnecting cables are attached as follows: (see Fig. 1)

A. The cable from the Auxiliary Panel is plugged into the eleven-contact receptacle on the Power Amplifier. This cable has a three conductor

CABINET WIRING - MODEL SL-2; BA2

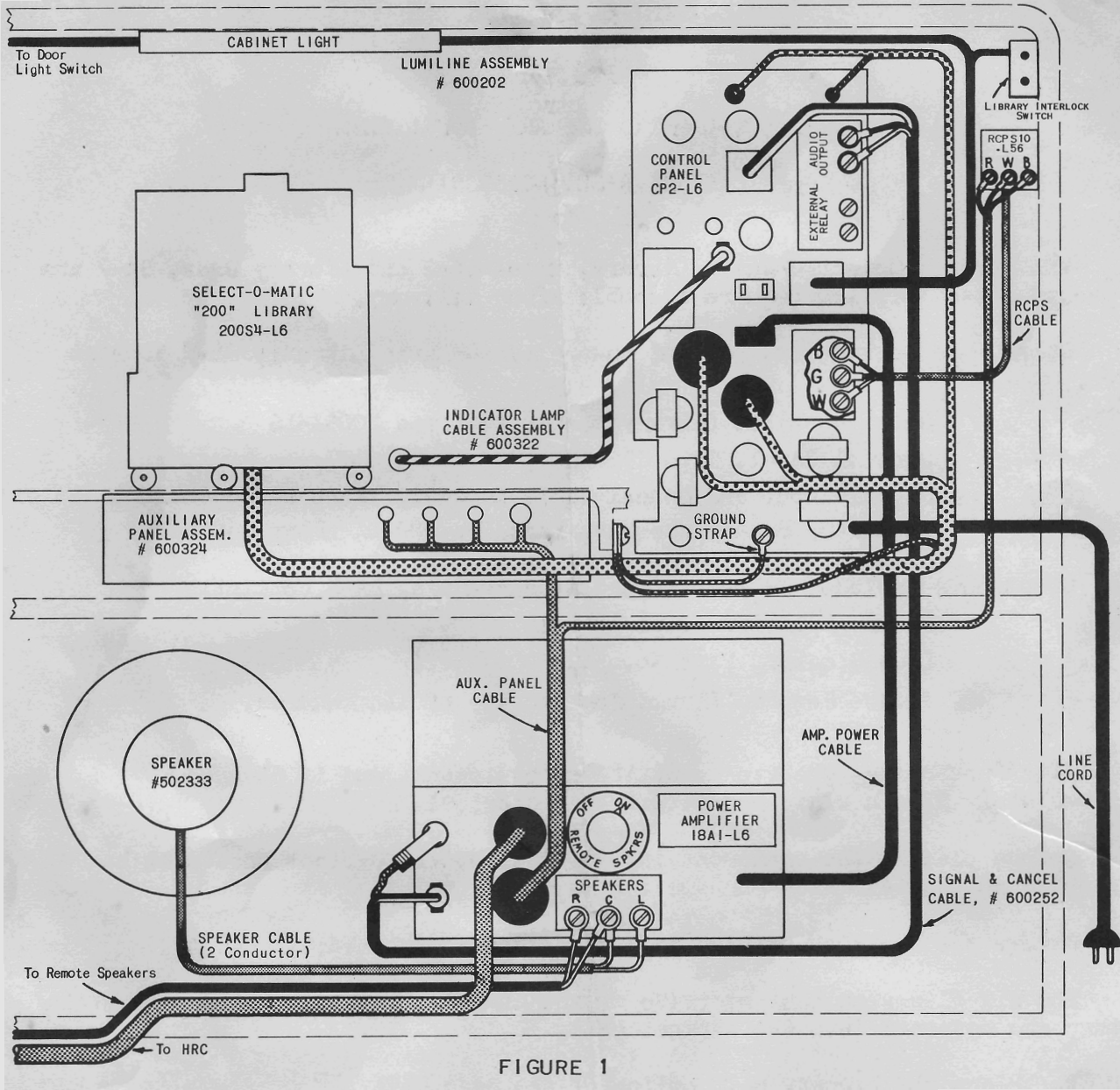


FIGURE 1

PARTS LIST

- | | |
|----------------------------------|----------------------------------|
| 600252 Signal & Cancel Assembly | 600202 Lumiline Assembly |
| 600253 Cable | 500119 Mounting Clip |
| 302110 Connector, Single Contact | 600203 Lumiline Base |
| 74089 Solder Lug | 600037 Bushing |
| 600254 Socket, Two Contact | 600206 Lumiline Receptacle |
| 602419 Plug, Light Contact | 600024 Door Switch, Light |
| | 600023 Interlock Switch, Library |
| 502333 Speaker | 600228 Switch Bracket |
| 502347 Cone Assembly | 600143 Plug, Four Contact |
| 600229 Grille Cloth | |
| 600236 Grille Screen | |
| 600322 Indicator Light Assembly | |
| F-8896 Plug, Two Contact | 600204 Lumiline Lamp (30 Watt) |
| 10242 #51 Mazda Lamp | 600205 Lumiline Cap |

branch used only for connections to the Remote Controlled Power Switch, if this accessory is used.

- B. The line cord from the amplifier should be brought up through the cable opening behind the Control Panel and plugged into "Socket 2" on the Control Panel.
 - C. The signal cable is dropped through the cable opening and attached to the amplifier with the 2-prong plug into its socket and the single contact connector tightly fastened to its mating connector on the amplifier.
5. Unblock the Library Mechanism by completely removing all RED shipping blocks and RED shipping hardware. MANUALLY TURN THE MECHANISM THROUGH A SELECTION AND CHANGE CYCLE TO OBSERVE THAT THE UNIT DOES NOT BIND DUE TO SHIPPING DAMAGE.
 6. The line cord from the Control Panel is brought through its regular opening in the upper rear door panel. Facing the rear of the cabinet, first install the left-hand door panel and then the right-hand door panel and lock. Install the bottom rear panel. The assembly is ready for use when the line cord is plugged into any 115 volt, 60 cycle supply socket.

Note: This equipment will not function with the rear doors removed. Always replace the rear doors to close the interlock switch that controls the mechanism power circuit.

SETTING PROGRAM TIMER

The Program Timer must be set to correct time as in the case of any other timer, clock, or watch. In order to set the timer, proceed as follows:

With power plug disconnected at the service outlet, slowly turn one-hour dial of PROGRAM TIMER in a counter-clockwise direction as indicated by the red arrows on dial. Note that as numbers 0, 15, 30, and 45 on the ONE-HOUR DIAL pass the pointer, a distinct click is heard from the timer.

With a watch accurately set to correct local time, note the correct time and slowly rotate ONE-HOUR DIAL until the timer approaches the next fifteen minute period. Stop turning immediately when the fifteen minute click is heard.

Wait until correct local time is the same as indicated time and at that instant insert power plug into service receptacle. The timer has now been set and is running at correct local time.

To illustrate the above, assume that the correct time is 2:25 P.M. Proceed as follows:

1. Disconnect power cord from service outlet.
2. Turn ONE-HOUR DIAL until the number "2" in the "Day" area, on the 24-hour dial is at the pointer.
3. Very slowly continue turning the ONE-HOUR DIAL and as 30 on the ONE-HOUR DIAL approaches the pointer, listen for the 15 minute click. Stop turning dial immediately when the click is heard.

Note: At this setting, the number "30" on the ONE-HOUR DIAL should be within $1/32$ of an inch from the pointer. If the pointer does not exactly indicate "30" there is no cause for concern because the numbers on the dials have nothing to do with turning programs on and off. This timing is done by the closing of a mechanically operated switch in the timer which produces the click at each 15 minute interval. The dials serve the dual function of indicating time for the selector pins and for telling time visually within a fraction of a minute.

4. Insert the power plug when local time reaches exactly 2:30 P.M. With care, the above method will result in program timing within 5 seconds of actual local time.

INSTALLATION OF ACCESSORIES

HOME REMOTE CONTROL TYPE HRC1

The plug end of the HRC is brought into the BA-2 Unit thru the opening in the rear door and plugged into the nine-contact receptacle on the Power Amplifier. Use furnished cable clamp and screw to secure the cable inside the BA-2 cabinet.

REMOTE-CONTROLLED POWER SWITCH

The remote Controlled Power Switch is required for remote control of power on the SL2 and BA-2. Connect the three-conductor cable from the RCPS to the power terminal block on the Control Panel. To gain access to this terminal block it is necessary to remove the two screws that secure the metal cover. AFTER MAKING CONNECTIONS, BE SURE TO REPLACE THE COVER. The three conductor cable that branches off the Auxilliary Panel cable is then connected to the three screw terminals on one end of the RCPS observing color markings on the cable and terminals.

The RCPS is fastened to the upper side panel of the SL-2 cabinet with the four wood screws furnished.

REMOTE SPEAKERS

The Remote Speaker Switch on the power amplifier must be in the "OFF" position when no remote speakers are used.

If remote speakers are required, their leads are connected to terminals "R" and "C" on the amplifier terminal strip. The remote speaker switch must be set to the "ON" position. With this type of installation the BA-2 speaker receives 6 watts of power while the remote speakers have up to 12 watts of power available. If the remote speakers are used in the same room as the BA-2 Unit, it is recommended that they (not more than 3 remote speakers) be set at 4 watts each so that all speakers will be operated at nearly the same volume level. Where remote speakers are used to cover rooms away from the BA-2 Unit, any desired power level may be selected provided that the total wattage of all remote speakers does not exceed 12 watts (remote speaker rating of the amplifier).

Note: If more than three remote speakers are required to operate in the same room with the BA-2 speaker, the six watts allotted to the BA-2 speaker will cause this speaker to sound too loud. Under such conditions, it is possible to reduce the volume level of the BA-2 speaker in 4.5 db steps by using a transformer, Seeburg Part Nos. 502011, 502012, 502013, or 502014 connected as shown below.

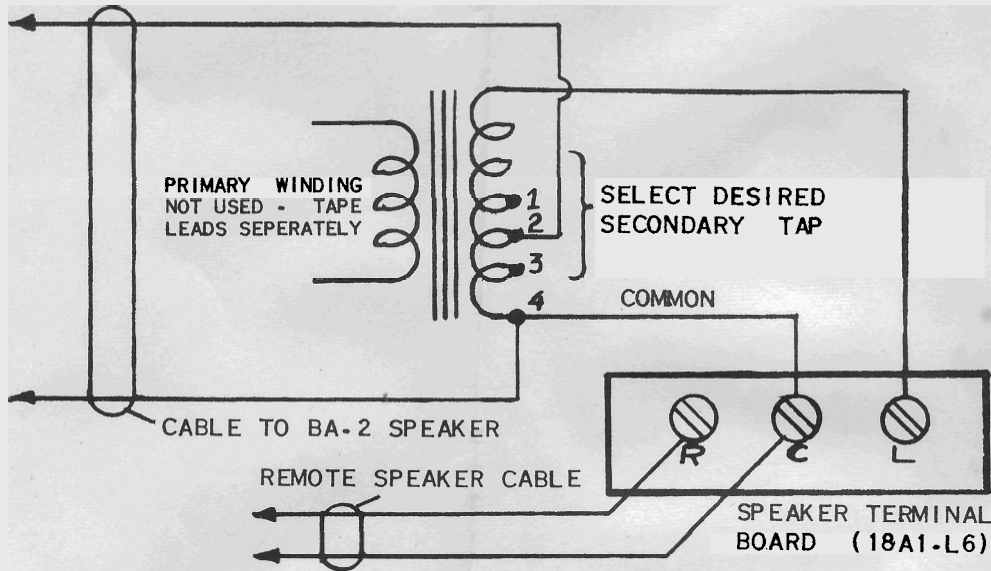


FIGURE 2

REMOTE AMPLIFIERS

An expansive installation requiring large numbers of remote speakers may be covered by the use of one or more remote amplifiers. Such remote amplifiers should be capable of full power output with less than 5 volts signal input and should be equipped with bass, treble and volume controls. The input impedance of the remote amplifiers should be high enough so that the effective loading on the control panel is not less than 10,000 Ohms.

A single well-shielded cable (Seeburg Part No. 95106) should be run from the "Audio Output" terminals of the control panel to the remote amplifiers with all amplifiers in parallel across this line. This signal line should be dressed clear of all sources of electrical interference to avoid noise pickup.

J. P. SEEBURG CORPORATION
1500 DAYTON STREET CHICAGO 22, ILLINOIS

SEEBURG INDUSTRIAL  COMMERCIAL MUSIC