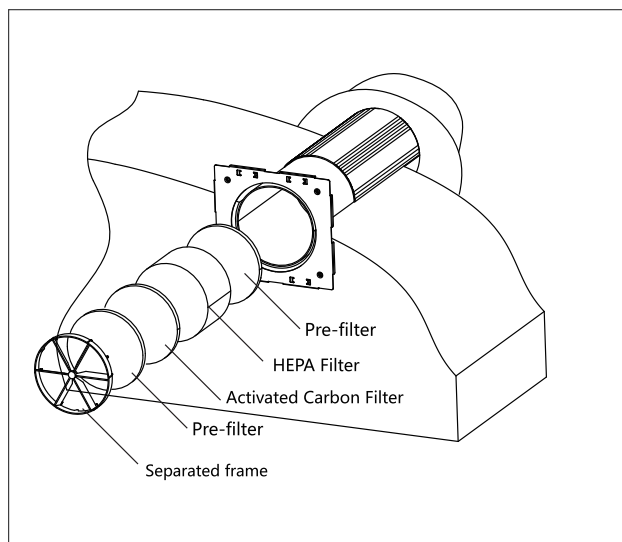
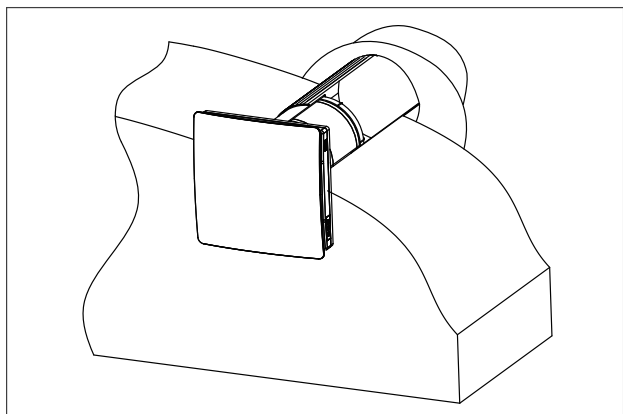


Installation Guide

5. Install the filters and the air flow rectifier in consecutive order inside the telescopic air duct.



6. Install the ventilation unit on the mounting plate. The ventilation unit is fixed with magnets.

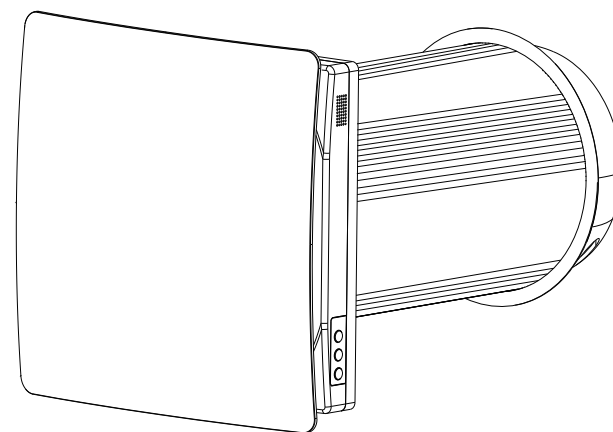


DISCONNECT THE VENTILATION SYSTEM FROM POWER MAINS PRIOR TO ANY ELECTRIC INSTALLATION OPERATIONS. CONNECT THE VENTILATOR CORRECTLY WITH A GROUNDED TERMINAL. ANY INTERNAL CONNECTION MODIFICATIONS ARE NOT ALLOWED AND RESULT IN LOSS OF WARRANTY

The ventilator is rated for connection to single-phase AC 100-240 V/50-60 Hz power mains. Connect the ventilator to the socket directly.



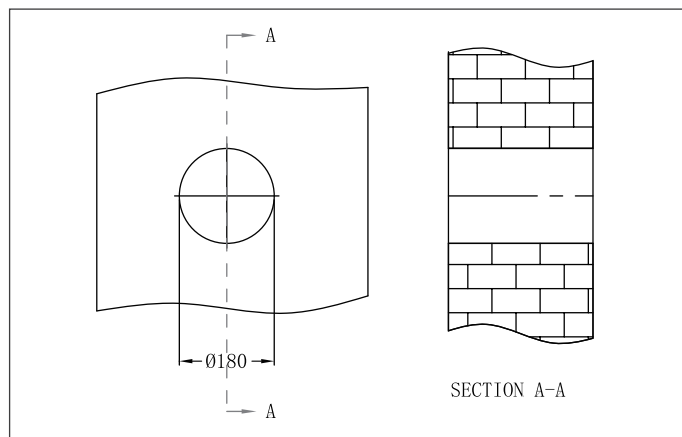
VA-5002 Installation Guide



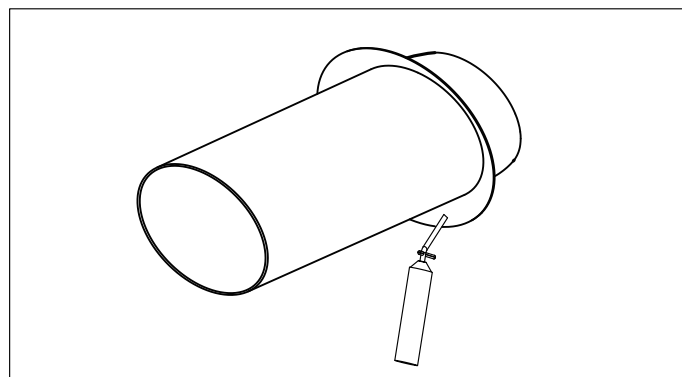
Installation Guide

VENTILATOR MOUNTING

1. Prepare a round hole through the wall. The hole size is shown below.

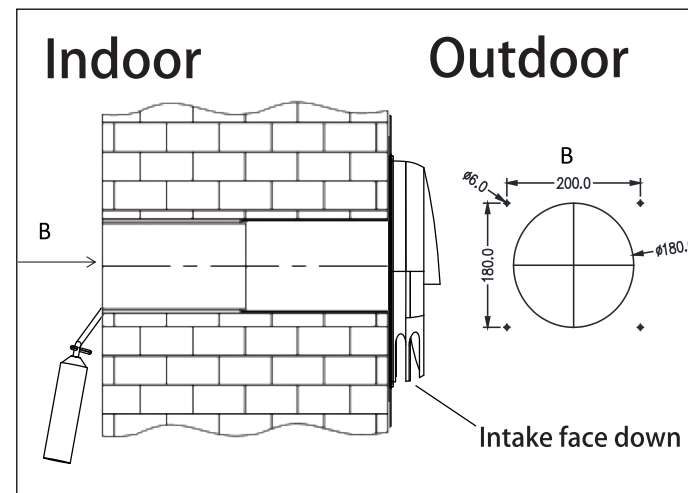


2. Assemble inner duct and outer duct together, then cut to cater to the thickness of the wall. Paste waterproof sealing glue on the inner side of the rubber ring, shown below.

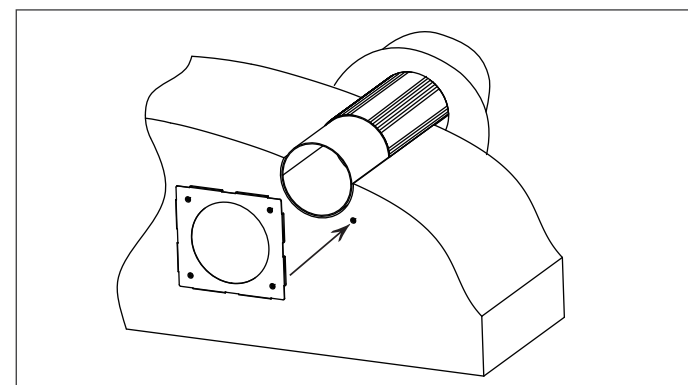


3. Pull back the duct through the wall hole to make the inner side rubber ring fix to the outside wall. Fill the gap between the wall and duct with foam glue. The inner duct should be perpendicular with indoor wall surface.

Installation Guide



4. Paste the location sticker onto the wall surface, paying attention to the direction ensuring the circle marked on the sticker lines up with the duct. Mark the drilling hole positions and remove sticker. Drill 4 x 6 mm holes and fill holes with rubber wall plugs (supplied).



Caution: The ventilator must not be installed in a location where the air duct will be obstructed by curtains, blinds or other item that can interfere with the air flow.