

The Pull-out box Connection System supplied by Rogers CS is a floor-wall reinforcing bar joining system.

Commonly used for -

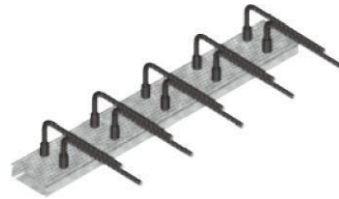
- Floor Slabs
- Walls
- Stairwells
- Corbels
- Diaphragm walls
- Jump forms
- Brick support ledges

## PULL OUT BOX KEYJOINT SYSTEMS



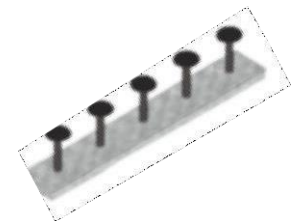
**PULL OUT BOX KEYJOINT JOINT**

*Generally, N12 keyjoint pullout system*



**PULL OUT BOX COUPLER JOINT**

*Couplers can be also supplied loose for specific install.*

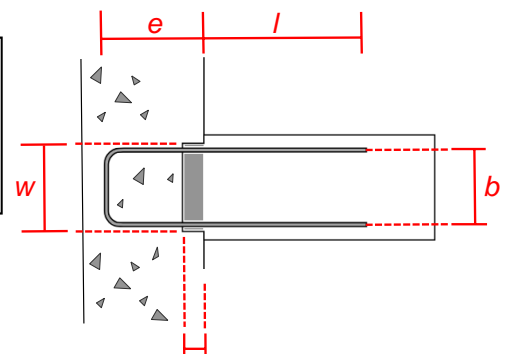


**PULL OUT BOX ANCHOR**

*Anchors can also be supplied loose for specific install*

**Refer STANDARD PULL OUT BOX TABLE, for standard N12 configurations available.**

- Standard embedment for N12 will be 130mm (e).
- Pullout Length for N12 will be 450mm (i) based on standard 40 x diameter.
- Pull Out Box depth nominal 38mm (d)



[WWW.ROGERSCS.COM.AU](http://WWW.ROGERSCS.COM.AU)

[SALES@ROGERSCS.COM.AU](mailto:SALES@ROGERSCS.COM.AU)

PHONE: 0449 674 145



## STANDARD PULL OUT BOX TABLE

Code	Box Length mm	Box Width mm (w)	Centres mm	Bar Shape	Wall Thickness mm	Bar Width / Cog Length mm (b)	Slab Size mm	No. Bar Per Box	Cog Length mm (C) (Bar Shape L)	Bar Width mm (B) (Bar Shape U)
TB85L7	1000	85	150	L	>=180	250	90-120	7	170	
TB85L8	1200	85	150	L	>=180	250	90-120	8	170	
TB85L5	1000	85	200	L	>=180	250	90-120	5	170	
TB85L6	1200	85	200	L	>=180	250	90-120	6	170	
TB120U7	1000	120	150	U	>=180	100	120-150	7		100
TB120U8	1200	120	150	U	>=180	100	120-150	8		100
TB120U5	1000	120	200	U	>=180	100	120-150	5		100
TB120U6	1200	120	200	U	>=180	100	120-150	6		100
TB150U7	1000	150	150	U	>=180	120	150-200	7		120
TB150U8	1200	150	150	U	>=180	120	150-200	5		120
TB150U5	1000	150	200	U	>=180	120	150-200	5		120
TB150U6	1200	150	200	U	>=180	120	150-200	6		120
TB190U7	1000	190	150	U	>=180	150	200-250	7		150
TB190U8	1200	190	150	U	>=180	150	200-250	8		150
TB190U5	1000	190	200	U	>=180	150	200-250	5		150
TB190U6	1200	190	200	U	>=180	150	200-250	6		150
TB220U7	1000	220	150	U	>=180	180	230-300	7		180
TB220U8	1200	220	150	U	>=180	180	230-300	8		180
TB220U5	1000	220	200	U	>=180	180	230-300	5		180
TB220U6	1200	220	200	U	>=180	180	230-300	6		180

FOR NON-STANDARD KEYJOINT including COUPLER and ANCHOR connections,  
Rogers CS provide an engineering solution.  
Shop drawings are prepared for approval by Builders / Consulting Engineers.

## PULL OUT BOX NAMING CONVENTION

BAR SIZE	TYPE	BOX WIDTH	BAR TYPE	NO. OF BARS	BOX LENGTH	PULLOUT	EMBEDMENT	COG
12	KJ	150	U	5	1000	P500	E200	C150



WWW.ROGERSCS.COM.AU  
SALES@ROGERSCS.COM.AU  
PHONE: 0449 674 145



**BAR SIZES GENERALLY INCLUDE:** N12, N16, N20 & N24

**PULL OUT BOX TYPES INCLUDE:**

KJ - KEY JOINT

CJ - COUPLER JOINT

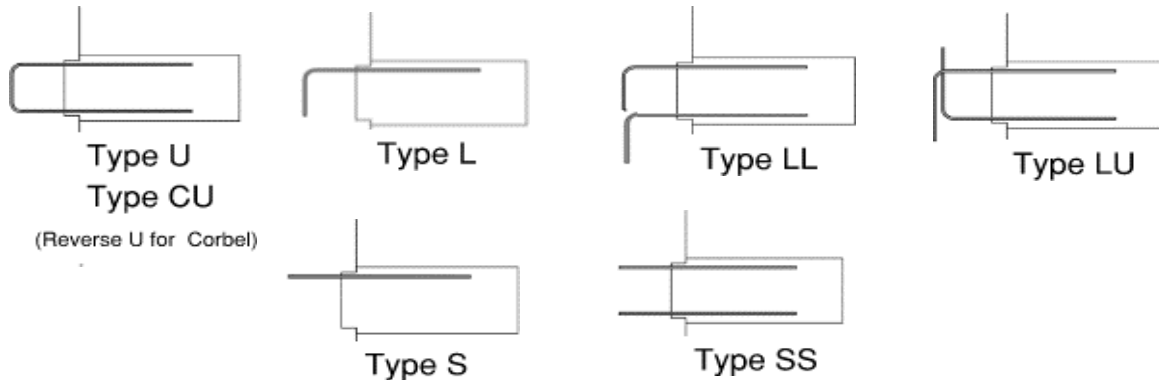
When connecting bar is larger than N12, reinforcement continuity can be achieved via coupler box system. Custom coupler boxes confirm to AS/NZS 4671:2001

AJ - ANCHOR JOINT

When reinforcing congestion is an issue, or for quick install. Anchor joints confirm to AS3600:2009.

**STANDARD WIDTHS:** 85, 120, 150, 190 & 220mm

**BAR TYPES / NO.:** U, CU, L, LL, LU, S, SS



**LENGTH:**

**PULLOUT LENGTH:**

**EMBEDMENT OF BAR:**

STANDARD BOXES ARE 1000mm & 1200mm

BAR PULLOUT LENGTH X 40 Dia.

GENERALLY (E) IS 130mm AS STANDARD

FROM FRONT OF BOX. CUSTOM (E) CAN BE MADE TO SUIT SPECIFIC PROJECT NEEDS.

**COG LENGTH:**

(C) VALUE AS APPLICABLE TO BAR SIZE

**CUSTOMISATION:**

ROGERS CS RECGONISE THAT WITH TODAYS DESIGN CHALLENGES CUSTOMISABLE PULL-OUT BOX ARE A NECESSITY TO SUIT PROJECT SPECIFIC NEEDS.



**WWW.ROGERSCS.COM.AU**

**SALES@ROGERSCS.COM.AU**

**PHONE: 0449 674 145**